

# LIEBHERR

## CONSTRUCTION EQUIPMENT



### LIEBHERR LTM1250-5.1088721- Coolant

Sample No: LH0259135

Oil Type: ANTIFREEZE O MIX



#### Sample Information

Sample Number	LH0259135	---	---	---
Sample Date	20 Mar 2024	---	---	---
Machine Hours	0	---	---	---
Sample Status	ABNORMAL	---	---	---

LIEBHERR USA CO - MOBILE AND CRAWLER CRANES  
 4100 CHESTNUT AVENUE  
 NEWPORT NEWS, VA  
 US 23607  
 Contact: CHRIS JONES  
 chris.jones@liebherr.com  
 T: (757)245-5251  
 F:



#### Coolant Condition

Boron	ppm	98	---	---	---
Phosphorus	ppm	5	---	---	---
Sodium	ppm	3230	---	---	---
Potassium	ppm	403	---	---	---
Silicon	ppm	39	---	---	---
pH	Scale 0-14	7.97	---	---	---
Reserve Alkalinity	Scale 0-20	---	---	---	---
Molybdenum	ppm	9	---	---	---
Nitrites	ppm	1012	---	---	---
Percentage Glycol	%	50.7	---	---	---
Freezing Point	°C	-35	---	---	---

#### Diagnosis

We advise an early resample to confirm this situation. The lead level is abnormal. There is no indication of any contamination in the coolant. Glycol and nitrite levels are acceptable. The pH level of this fluid is within the acceptable limits.



#### Contamination

Magnesium	ppm	2	---	---	---
Calcium	ppm	31	---	---	---
Coolant Appearance		normal	---	---	---
Coolant Color		Pink	---	---	---



#### Corrosion

Iron	ppm	<1	---	---	---
Aluminum	ppm	1	---	---	---
Copper	ppm	4	---	---	---
Lead	ppm	36	---	---	---
Tin	ppm	0	---	---	---

Depot: LIENEW  
 Unique No: 10943178  
 Signed: Doug Bogart  
 Report Date: 08 Apr 2024

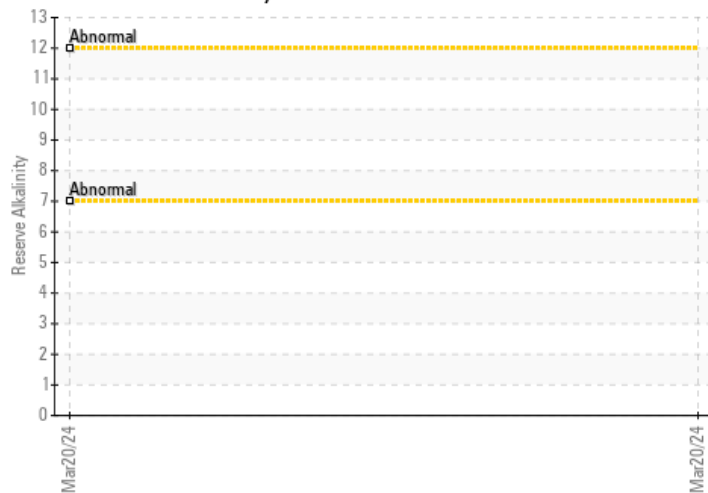


### Graphs

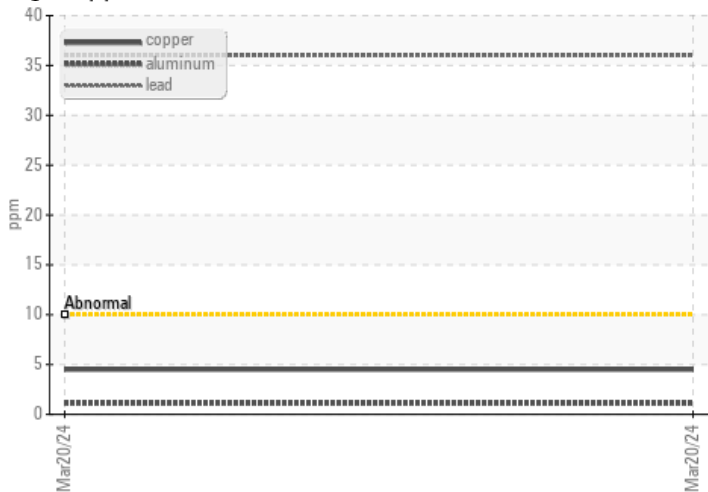
Iron/Tin/Silver



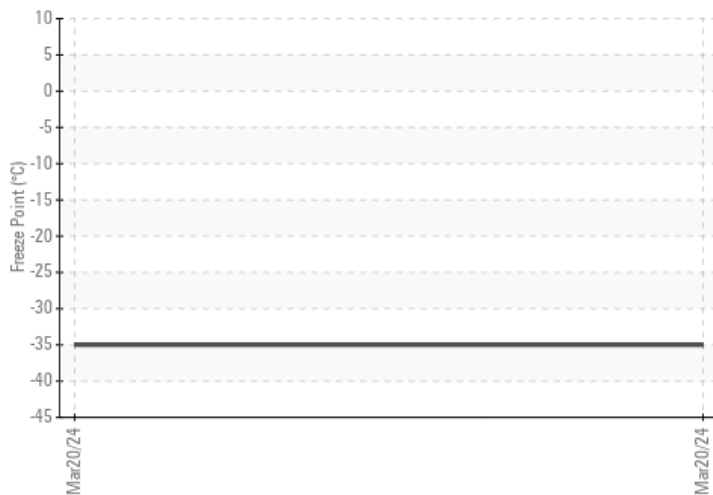
Reserve Alkalinity



Copper/Aluminum/Lead



Freeze Point



pH



Nitrites

