

OIL ANALYSIS REPORT

Area
[70088271]
Machine Id
Component
Filter
Fluid
{not provided} (--- LTR)

Sample Rating Trend



WEAR PARTICLES



DIAGNOSIS

Recommendation
Little or no information is provided as to the component and lubricant being tested. Recommendations are therefore generic in nature and may not apply to the current application. Please forward information as to equipment type, reservoir capacity, lubricant type and any pertinent information to allow for a more accurate assessment. This is a baseline read-out on the submitted sample.

Wear Particles
Wear particle analysis indicates that the ferrous spheres particles are abnormal. There spheres were of multiple sizes and had a dark oxidized layer on them indicating these particles may be from recent soldering work performed.

Contaminants
The filter contained only normal levels of contaminants, and debris. All filter contaminant levels are normal.

SAMPLE INFORMATION method limit/base current history1 history2

Sample Number	Client Info	PC	---	---
Sample Date	Client Info	17 Dec 2019	---	---
Machine Age	hrs Client Info	0	---	---
Oil Age	hrs Client Info	0	---	---
Oil Changed	Client Info	N/A	---	---
Sample Status		ABNORMAL	---	---

CONTAMINATION method limit/base current history1 history2

Water	WC Method	NEG	---	---
-------	-----------	-----	-----	-----

WEAR METALS method limit/base current history1 history2

Iron	ppm ASTM D5185(m)	52	---	---
Chromium	ppm ASTM D5185(m)	4	---	---
Nickel	ppm ASTM D5185(m)	6	---	---
Copper	ppm ASTM D5185(m)	1	---	---
Vanadium	ppm ASTM D5185(m)	<1	---	---

FERROGRAPHY method limit/base current history1 history2

Ferrous Rubbing	Scale 0-10 ASTM D7684*	4		
Ferrous Sliding	Scale 0-10 ASTM D7684*	1		
Ferrous Cutting	Scale 0-10 ASTM D7684*			
Ferrous Rolling	Scale 0-10 ASTM D7684*	2		
Ferrous Break-in	Scale 0-10 ASTM D7684*			
Ferrous Spheres	Scale 0-10 ASTM D7684*	2		
Ferrous Black Oxides	Scale 0-10 ASTM D7684*			
Ferrous Red Oxides	Scale 0-10 ASTM D7684*			
Ferrous Corrosive	Scale 0-10 ASTM D7684*			
Ferrous Other	Scale 0-10 ASTM D7684*			
Nonferrous Rubbing	Scale 0-10 ASTM D7684*			
Nonferrous Sliding	Scale 0-10 ASTM D7684*			
Nonferrous Cutting	Scale 0-10 ASTM D7684*			
Nonferrous Rolling	Scale 0-10 ASTM D7684*			
Nonferrous Other	Scale 0-10 ASTM D7684*			
Sand/Dirt	Scale 0-10 ASTM D7684*	1		
Fibres	Scale 0-10 ASTM D7684*	1		
Spheres	Scale 0-10 ASTM D7684*			
Other	Scale 0-10 ASTM D7684*	3		
Patch Weight	mg ASTM D7684*	31	---	---

ADDITIVES method limit/base current history1 history2



Molybdenum	ppm ASTM D5185(m)	<1	---	---
Manganese	ppm ASTM D5185(m)	<1	---	---

CONTAMINANTS method limit/base current history1 history2

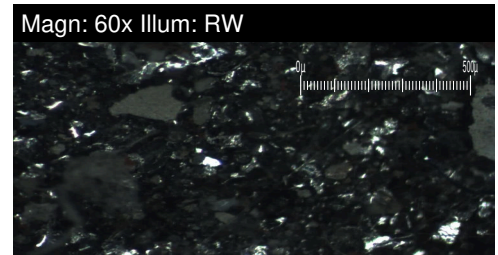
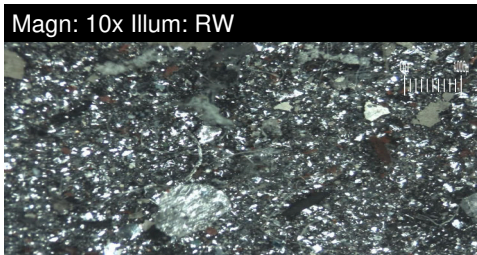
Silicon	ppm ASTM D5185(m)	2	---	---
---------	-------------------	---	-----	-----

OIL ANALYSIS REPORT

VISUAL	method	limit/base	current	history1	history2	
White Metal	scalar	Visual*	NONE	NONE	---	---
Yellow Metal	scalar	Visual*	NONE	NONE	---	---
Precipitate	scalar	Visual*	NONE	NONE	---	---
Silt	scalar	Visual*	NONE	NONE	---	---
Debris	scalar	Visual*	NONE	NONE	---	---
Sand/Dirt	scalar	Visual*	NONE	NONE	---	---
Appearance	scalar	Visual*	NORML	NORML	---	---
Odor	scalar	Visual*	NORML	NORML	---	---
Emulsified Water	scalar	Visual*		NEG	---	---
Free Water	scalar	Visual*		NEG	---	---

SAMPLE IMAGES	method	limit/base	current	history1	history2
Color				no image	no image
Bottom				no image	no image

GRAPHS



Laboratory : WearCheck - C8-1175 Appleby Line, Burlington, ON L7L 5H9
Sample No. : PC **Received** : 08 Jan 2020
Lab Number : **02330621** **Tested** : 13 Jan 2020
Unique Number : 4981924 **Diagnosed** : 13 Jan 2020 - Kevin Marson
Test Package : FLTRO (Additional Tests: ICP, ICP-DIGEST, KV40, PrtCount, Spat, TAN Auto, Visual)

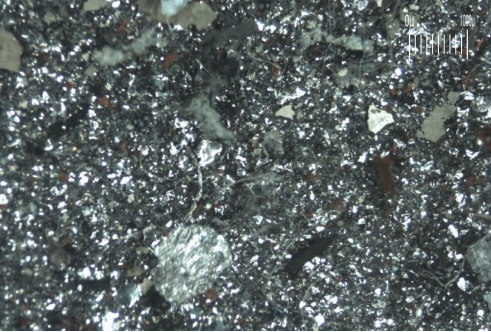
Suncor - Terra Nova Projects
 Scotia Centre, 235 Water Street
 St. John's, NL
 CA A1C 1B6
 Contact: Josh Hynes
 joshhynes@suncor.com
 T: (709)778-3575
 F: (709)724-2835

To discuss this sample report, contact Customer Service at 1-800-268-2131.
 Test denoted (*) outside scope of accreditation, (m) method modified, (e) tested at external lab.
 Validity of results and interpretation are based on the sample and information as supplied.

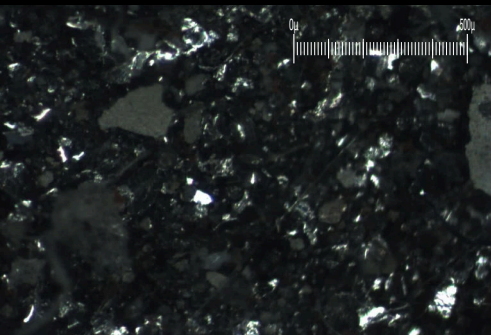
FILTER REPORT

Area
[70088271]
 Machine Id
WHPU OIL FILTER (S/N CA-58603)
 Component
Filter
 Fluid
{not provided} (--- LTR)

Magn: 10x Illum: RW



Magn: 60x Illum: RW



FERROGRAPHY			method	limit/base	current	history1	history2
Ferrous Rubbing	Scale 0-10	ASTM D7684*			4		
Ferrous Sliding	Scale 0-10	ASTM D7684*			1		
Ferrous Cutting	Scale 0-10	ASTM D7684*					
Ferrous Rolling	Scale 0-10	ASTM D7684*			2		
Ferrous Break-in	Scale 0-10	ASTM D7684*					
Ferrous Spheres	Scale 0-10	ASTM D7684*			▲ 2		
Ferrous Black Oxides	Scale 0-10	ASTM D7684*					
Ferrous Red Oxides	Scale 0-10	ASTM D7684*					
Ferrous Corrosive	Scale 0-10	ASTM D7684*					
Ferrous Other	Scale 0-10	ASTM D7684*					
Nonferrous Rubbing	Scale 0-10	ASTM D7684*					
Nonferrous Sliding	Scale 0-10	ASTM D7684*					
Nonferrous Cutting	Scale 0-10	ASTM D7684*					
Nonferrous Rolling	Scale 0-10	ASTM D7684*					
Nonferrous Other	Scale 0-10	ASTM D7684*					
Sand/Dirt	Scale 0-10	ASTM D7684*			1		
Fibres	Scale 0-10	ASTM D7684*			1		
Spheres	Scale 0-10	ASTM D7684*					
Other	Scale 0-10	ASTM D7684*			3		
Patch Weight	mg	ASTM D7684*			31	---	---

WEAR

Wear particle analysis indicates that the ferrous spheres particles are abnormal. There spheres were of multiple sizes and had a dark oxidized layer on them indicating these particles may be from recent soldering work performed.

This page left intentionally blank