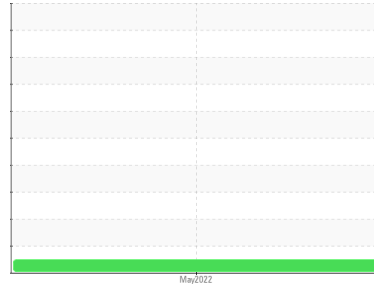


# FUEL REPORT

Sample Rating Trend

**NORMAL**



Machine Id  
**CAL021**  
Component  
**Diesel Fuel**  
Fluid  
**DIESEL FUEL No. 2 (--- LTR)**

## DIAGNOSIS

### Recommendation

Please contact your representative for information regarding the proper sampling kits for your service.

### Corrosion

{not applicable}

### Contaminants

The water content is negligible.

### Fuel Condition

Not enough sample submitted to determine fuel condition and/or classification.

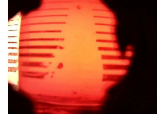

SAMPLE INFORMATION		method	limit/base	current	history1	history2
Sample Number	Client Info			<b>PC0052743</b>	---	---
Sample Date	Client Info			<b>18 May 2022</b>	---	---
Machine Age	hrs	Client Info		<b>0</b>	---	---
Sample Status				<b>NORMAL</b>	---	---

PHYSICAL PROPERTIES		method	limit/base	current	history1	history2
Visc @ 40°C	cSt	ASTM D7279(m)	4.1	<b>2.8</b>	---	---

SULFUR CONTENT		method	limit/base	current	history1	history2
Sulfur	ppm	ASTM D5185(m)		<b>11</b>	---	---

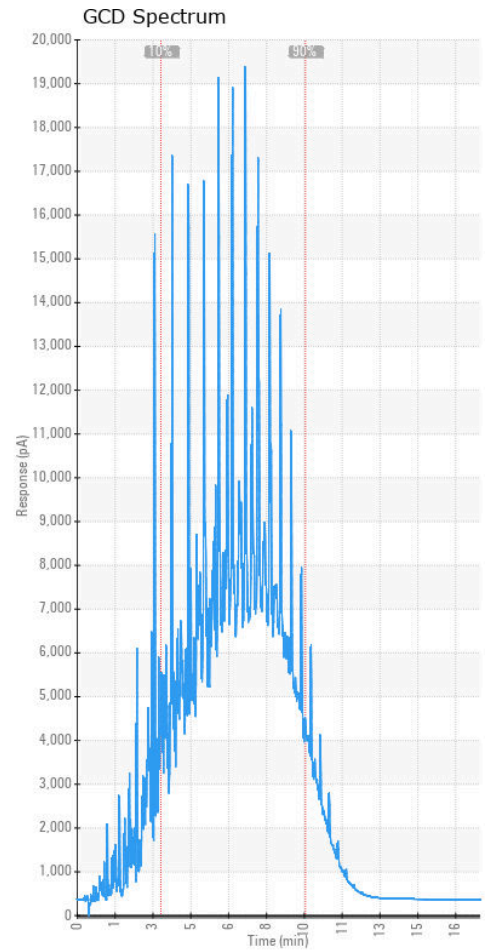
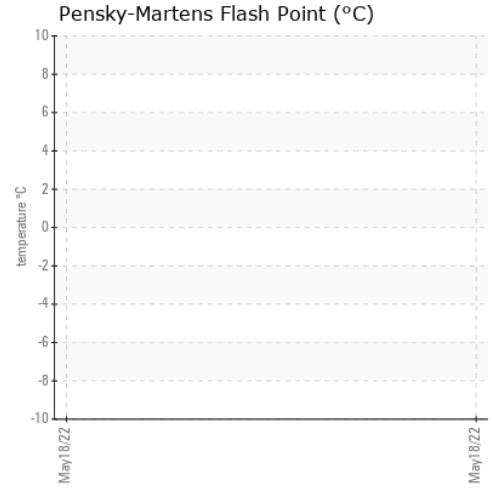
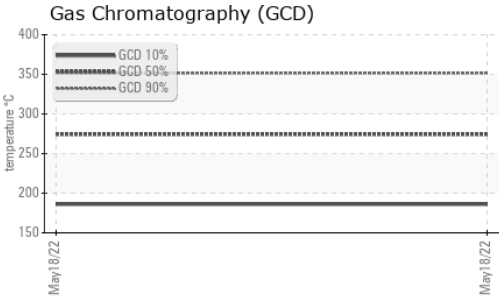
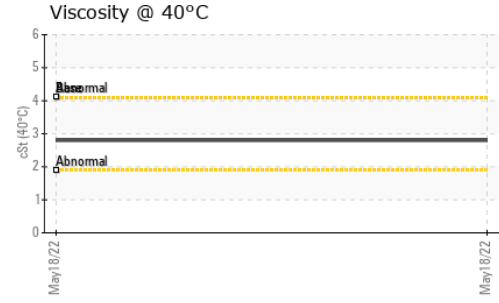
CONTAMINANTS		method	limit/base	current	history1	history2
Silicon	ppm	ASTM D5185(m)	<1.0	<b>0</b>	---	---
Sodium	ppm	ASTM D5185(m)	<0.1	<b>0</b>	---	---
Potassium	ppm	ASTM D5185(m)	<0.1	<b>&lt;1</b>	---	---

HEAVY METALS		method	limit/base	current	history1	history2
Aluminum	ppm	ASTM D5185(m)	<0.1	<b>0</b>	---	---
Nickel	ppm	ASTM D5185(m)	<0.1	<b>0</b>	---	---
Lead	ppm	ASTM D5185(m)	<0.1	<b>0</b>	---	---
Vanadium	ppm	ASTM D5185(m)	<0.1	<b>0</b>	---	---
Iron	ppm	ASTM D5185(m)	<0.1	<b>&lt;1</b>	---	---
Calcium	ppm	ASTM D5185(m)	<0.1	<b>1</b>	---	---
Magnesium	ppm	ASTM D5185(m)	<0.1	<b>&lt;1</b>	---	---
Phosphorus	ppm	ASTM D5185(m)	<0.1	<b>&lt;1</b>	---	---
Zinc	ppm	ASTM D5185(m)	<0.1	<b>&lt;1</b>	---	---

SAMPLE IMAGES		method	limit/base	current	history1	history2
Color					no image	no image
Bottom					no image	no image

# FUEL REPORT

## GRAPHS



**Laboratory** : WearCheck - C8-1175 Appleby Line, Burlington, ON L7L 5H9 **Ocean Choice International - MV Calvert**  
**Sample No.** : PC0052743 **Received** : 31 Aug 2022 1315 Topsail Rd, P.O. Box 8190  
**Lab Number** : **02508189** **Diagnosed** : 06 Sep 2022 St. John's, NL  
**Unique Number** : 5449159 **Diagnostician** : Kevin Marson CA A1B 3N4  
**Test Package** : MOB 1 ( Additional Tests: GC-PercFuel, GCD )  
 Contact: Calvert Engine Control Room  
 calvertengine@oceanchoice.com

To discuss this sample report, contact Customer Service at 1-800-268-2131.  
 Test denoted (\*) outside scope of accreditation, (m) method modified, (e) tested at external lab.  
 Validity of results and interpretation are based on the sample and information as supplied.