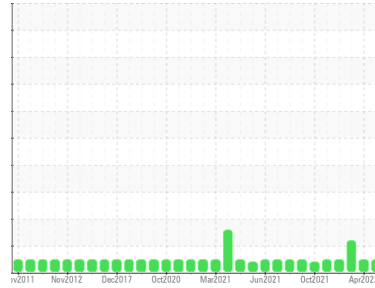


# FUEL REPORT

Sample Rating Trend

**NORMAL**



Area  
**[450150561]**  
Machine Id  
**TB-62203 EMG**  
Component  
**Diesel Fuel**  
Fluid  
**MARINE DIESEL DMA (--- GAL)**

## DIAGNOSIS

### Recommendation

Laboratory test indicate that this fuel is suitable for use and meets all test requirements. Resample at the next service interval to monitor.

### Corrosion

{not applicable}

### Contaminants

The system cleanliness is acceptable for your target ISO 4406 cleanliness code. The water content is negligible. There is no indication of any contamination in the diesel fuel.

### Fuel Condition

The condition of the fuel is suitable for further service.

SAMPLE INFORMATION		method	limit/base	current	history1	history2
Sample Number	Client Info			<b>PC</b>	PC	PC
Sample Date	Client Info			<b>25 May 2023</b>	23 Apr 2023	31 Jan 2023
Machine Age	hrs	Client Info		<b>0</b>	0	0
Sample Status				<b>NORMAL</b>	NORMAL	ABNORMAL

PHYSICAL PROPERTIES		method	limit/base	current	history1	history2
Specific Gravity		ASTM D1298*	0.869	<b>0.849</b>	0.849	0.847
Fuel Color	text	Visual Screen*	Clear	<b>Yellow</b>	Red	Orang
Visc @ 40°C	cSt	ASTM D7279(m)	5.74	<b>3</b>	3	3
Pensky-Martens Flash Point	°C	ASTM D7215*	73.0	<b>63.7</b>	63.6	63.5

SULFUR CONTENT		method	limit/base	current	history1	history2
Sulfur	ppm	ASTM D5185(m)	730	<b>164</b>	162	▲ 172

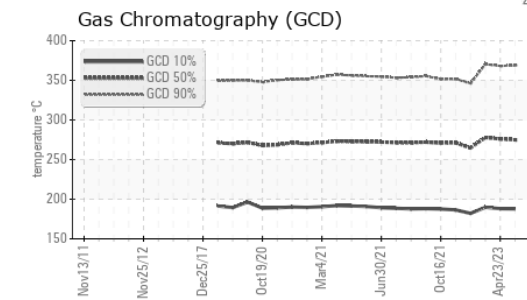
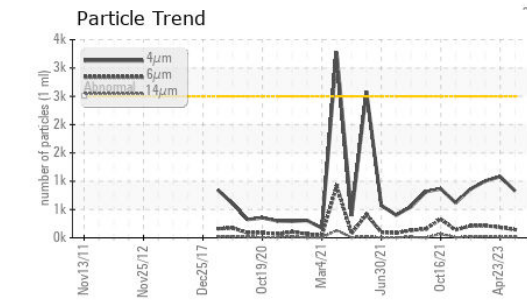
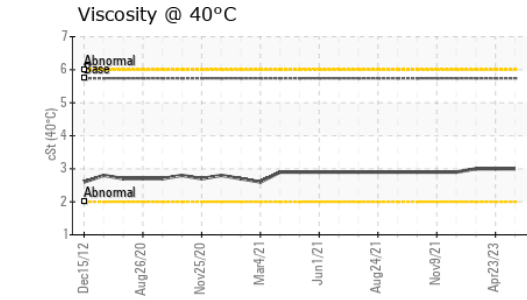
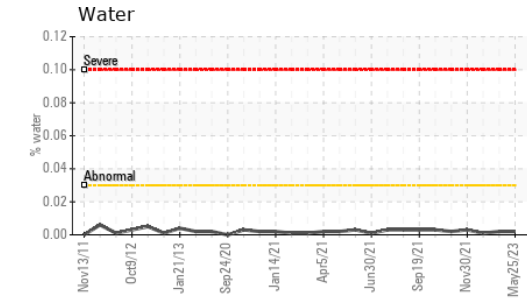
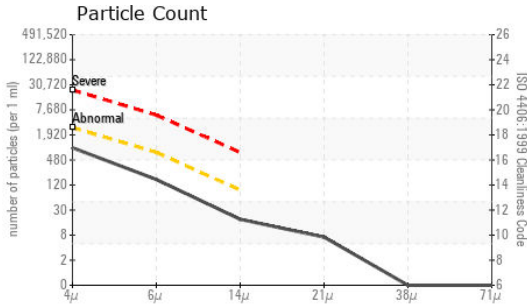
DISTILLATION		method	limit/base	current	history1	history2
Initial Boiling Point	°C	ASTM D2887*	171	<b>175</b>	175	177
5% Distillation Point	°C	ASTM D2887*		<b>199</b>	200	201
10% Distill Point	°C	ASTM D2887*	214	<b>211</b>	211	213
15% Distillation Point	°C	ASTM D2887*		<b>219</b>	220	222
20% Distill Point	°C	ASTM D2887*		<b>228</b>	228	230
30% Distill Point	°C	ASTM D2887*		<b>244</b>	244	246
40% Distill Point	°C	ASTM D2887*		<b>258</b>	259	260
50% Distill Point	°C	ASTM D2887*	323	<b>272</b>	273	275
60% Distill Point	°C	ASTM D2887*		<b>287</b>	288	290
70% Distill Point	°C	ASTM D2887*		<b>302</b>	303	305
80% Distill Point	°C	ASTM D2887*		<b>321</b>	321	323
85% Distillation Point	°C	ASTM D2887*		<b>335</b>	334	336
90% Distill Point	°C	ASTM D2887*	398	<b>349</b>	348	▲ 350
95% Distillation Point	°C	ASTM D2887*		<b>374</b>	372	374
Final Boiling Point	°C	ASTM D2887*	415	<b>396</b>	391	▲ 394

IGNITION QUALITY		method	limit/base	current	history1	history2
API Gravity		ASTM D1298*		<b>35</b>	35	35
Cetane Index		ASTM D4737*	<40.0	<b>48</b>	48	49

CONTAMINANTS		method	limit/base	current	history1	history2
Silicon	ppm	ASTM D5185(m)	<1.0	<b>0</b>	0	0
Sodium	ppm	ASTM D5185(m)	<0.1	<b>&lt;1</b>	0	0
Potassium	ppm	ASTM D5185(m)	<0.1	<b>0</b>	0	0
Water	%	ASTM D6304*	<0.05	<b>0.002</b>	0.002	0.001
ppm Water	ppm	ASTM D6304*	<500	<b>24.8</b>	22.4	4.6

FLUID CLEANLINESS		method	limit/base	current	history1	history2
Particles >4µm		ASTM D7647	>2500	<b>827</b>	1081	1005
Particles >6µm		ASTM D7647	>640	<b>144</b>	184	215
Particles >14µm		ASTM D7647	>80	<b>16</b>	10	23
Particles >21µm		ASTM D7647	>20	<b>6</b>	2	7
Particles >38µm		ASTM D7647	>4	<b>0</b>	0	1
Particles >71µm		ASTM D7647	>3	<b>0</b>	0	0
Oil Cleanliness		ISO 4406 (c)	>18/16/13	<b>17/14/11</b>	17/15/10	17/15/12

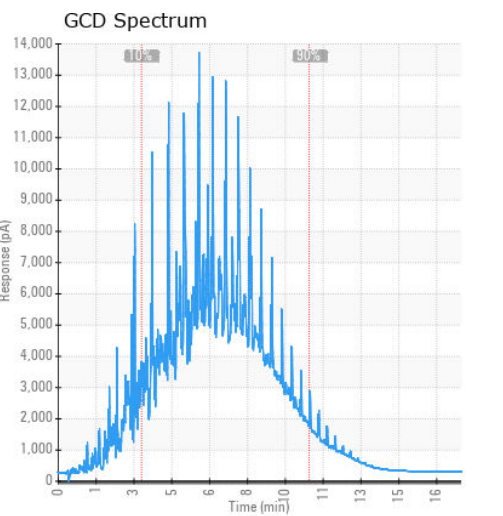
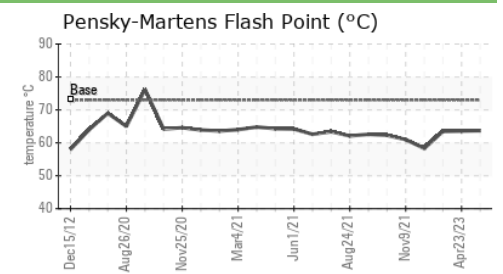
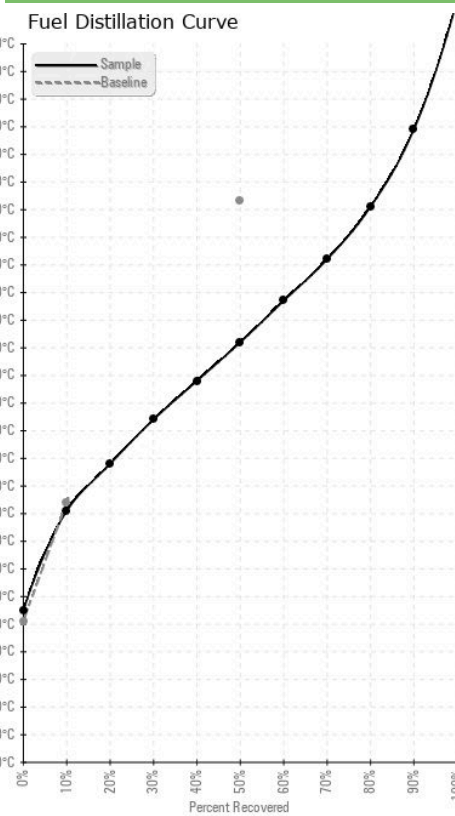
# FUEL REPORT



HEAVY METALS		method	limit/base	current	history1	history2
Aluminum	ppm	ASTM D5185(m)	<0.1	0	0	0
Nickel	ppm	ASTM D5185(m)	<0.1	0	0	0
Lead	ppm	ASTM D5185(m)	<0.1	0	0	0
Vanadium	ppm	ASTM D5185(m)	<0.1	0	0	0
Iron	ppm	ASTM D5185(m)	<0.1	<1	<1	<1
Calcium	ppm	ASTM D5185(m)	<0.1	<1	<1	<1
Magnesium	ppm	ASTM D5185(m)	<0.1	<1	<1	<1
Phosphorus	ppm	ASTM D5185(m)	<0.1	<1	<1	<1
Zinc	ppm	ASTM D5185(m)	<0.1	<1	<1	<1

SAMPLE IMAGES		method	limit/base	current	history1	history2
Color						
Bottom						

## GRAPHS



ISO 17025:2017  
Accredited  
Laboratory

**Laboratory** : WearCheck - C8-1175 Appleby Line, Burlington, ON L7L 5H9  
**Sample No.** : PC  
**Lab Number** : 02563668  
**Unique Number** : 5592709  
**Test Package** : FUEL ( Additional Tests: CC Flash, GC-PercFuel, PrtCount )

**Suncor - Terra Nova Projects**  
 Scotia Centre, 235 Water Street  
 St. John's, NL  
 CA A1C 1B6  
 Contact: Josh Hynes  
 joshhynes@suncor.com  
 T: (709)778-3575  
 F: (709)724-2835

To discuss this sample report, contact Customer Service at 1-800-268-2131.  
 Test denoted (\*) outside scope of accreditation, (m) method modified, (e) tested at external lab.  
 Validity of results and interpretation are based on the sample and information as supplied.