

Machine Id
DR135-KDK
Component
Transmission (Auto)
Fluid
PETRO CANADA ATF D3M (89 LTR)

DIAGNOSIS

Recommendation

We advise that you check for the source of water entry. The fluid change at the time of sampling has been noted. We recommend an early resample to monitor this condition.

Wear

All component wear rates are normal.

Contamination

There is a high concentration of water present in the fluid.

Fluid Condition

The fluid is no longer serviceable due to the presence of contaminants.

SAMPLE INFORMATION

	method	limit/base	current	history1	history2
Sample Number	Client Info		PC0078071	PC0075308	PC0039986
Sample Date	Client Info		29 Jun 2023	06 Jun 2023	23 Jan 2021
Machine Age	hrs	Client Info	16558	0	13946
Oil Age	hrs	Client Info	0	0	0
Oil Changed	Client Info		Changed	Changed	Changed
Sample Status			SEVERE	SEVERE	ABNORMAL

WEAR METALS

	method	limit/base	current	history1	history2
Iron	ppm	ASTM D5185(m) >160	20	35	89
Chromium	ppm	ASTM D5185(m) >5	0	<1	<1
Nickel	ppm	ASTM D5185(m) >5	<1	<1	<1
Titanium	ppm	ASTM D5185(m)	0	0	0
Silver	ppm	ASTM D5185(m) >5	0	0	<1
Aluminum	ppm	ASTM D5185(m) >50	<1	<1	<1
Lead	ppm	ASTM D5185(m) >50	<1	<1	3
Copper	ppm	ASTM D5185(m) >225	4	8	26
Tin	ppm	ASTM D5185(m) >10	<1	<1	2
Antimony	ppm	ASTM D5185(m)	0	0	0
Vanadium	ppm	ASTM D5185(m)	0	0	0
Beryllium	ppm	ASTM D5185(m)	0	0	0
Cadmium	ppm	ASTM D5185(m)	<1	0	0

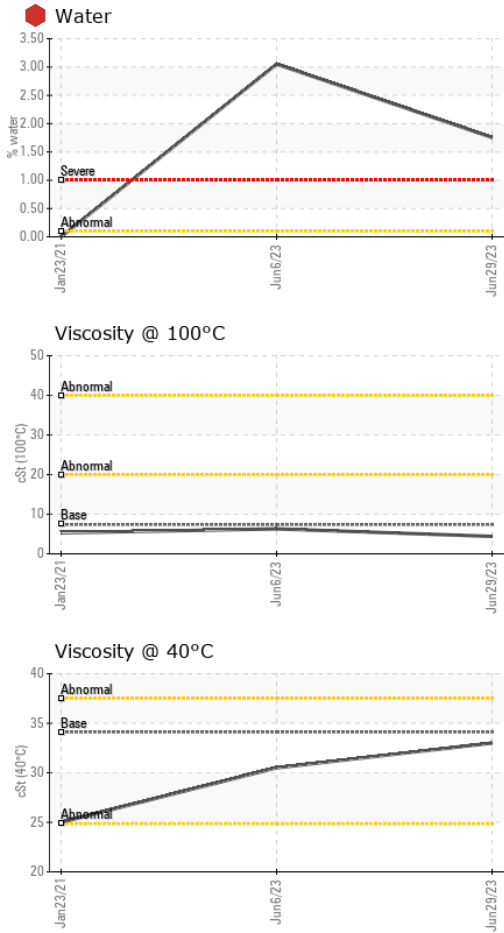
ADDITIVES

	method	limit/base	current	history1	history2
Boron	ppm	ASTM D5185(m) 98	96	89	74
Barium	ppm	ASTM D5185(m) <0.00	0	0	0
Molybdenum	ppm	ASTM D5185(m)	<1	<1	<1
Manganese	ppm	ASTM D5185(m)	<1	<1	1
Magnesium	ppm	ASTM D5185(m) <1	5	17	8
Calcium	ppm	ASTM D5185(m) 70	84	89	▲ 302
Phosphorus	ppm	ASTM D5185(m) 220	235	241	311
Zinc	ppm	ASTM D5185(m)	15	26	▲ 210
Sulfur	ppm	ASTM D5185(m) 710	840	941	▲ 1561
Lithium	ppm	ASTM D5185(m)	<1	<1	<1

CONTAMINANTS

	method	limit/base	current	history1	history2
Silicon	ppm	ASTM D5185(m) >20	5	5	7
Sodium	ppm	ASTM D5185(m)	2	2	2
Potassium	ppm	ASTM D5185(m) >20	<1	1	<1
Water	%	ASTM D6304* >0.1	● 1.754	● 3.051	---
ppm Water	ppm	ASTM D6304* >1000	● 17546.9	● 30517.5	---

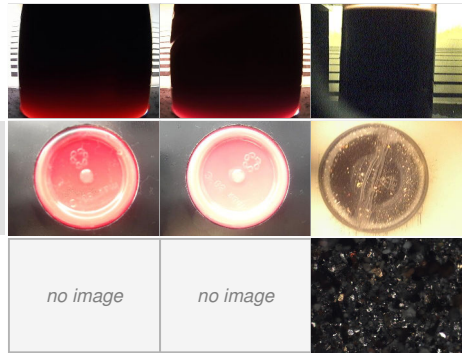
OIL ANALYSIS REPORT



PARAMETER	method	limit/base	current	history1	history2
White Metal	scalar	Visual*	NONE	NONE	▲ LTMOD
Yellow Metal	scalar	Visual*	NONE	NONE	▲ LTMOD
Precipitate	scalar	Visual*	NONE	NONE	NONE
Silt	scalar	Visual*	NONE	NONE	NONE
Debris	scalar	Visual*	NONE	NONE	NONE
Sand/Dirt	scalar	Visual*	NONE	NONE	NONE
Appearance	scalar	Visual*	NORML	▲ MILKY	NORML
Odor	scalar	Visual*	NORML	NORML	NORML
Emulsified Water	scalar	Visual*	>0.1	▲ .5%	▲ .2%
Free Water	scalar	Visual*		NEG	NEG

PARAMETER	method	limit/base	current	history1	history2
Visc @ 40°C	cSt	ASTM D7279(m)	34.11	33.0	30.5
Visc @ 100°C	cSt	ASTM D7279(m)	7.37	4.4	6.3
Viscosity Index (VI)	Scale	ASTM D2270*	190	---	163

PARAMETER	method	limit/base	current	history1	history2
Color					
Bottom					
PrtFilter					



Laboratory : WearCheck - C8-1175 Appleby Line, Burlington, ON L7L 5H9 Green Infrastructure and Partners Inc (GPI) - 286 - Shoring & Foundations
Sample No. : PC0078071 **Received** : 25 Jul 2023
Lab Number : **02572058** **Diagnosed** : 26 Jul 2023
Unique Number : 5617109 **Diagnostician** : Kevin Marson
Test Package : MOB 1 (Additional Tests: KF, KV100, VI)

To discuss this sample report, contact Customer Service at 1-800-268-2131.
 Test denoted (*) outside scope of accreditation, (m) method modified, (e) tested at external lab.
 Validity of results and interpretation are based on the sample and information as supplied.

151 Ram Forest Rd,
 Stouffville, ON
 CA L4A 2G8
 Contact: Shannon Abbott
 sabbott@gipi.com
 T: (905)750-5900
 F: