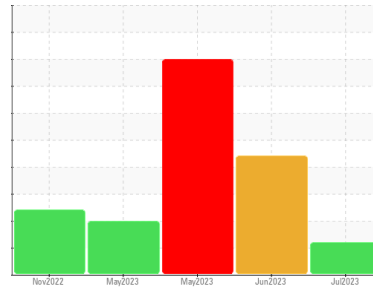




OIL ANALYSIS REPORT

Sample Rating Trend



ISO



Machine Id
411009
Component
Hydraulic System
Fluid
PETRO CANADA HYDREX MV 32 (--- GAL)

DIAGNOSIS

Recommendation

Nous avons pris note que le filtre a été remplacé au moment de l'échantillonnage. Confirm the source of the lubricant being utilized for top-up/fill. Nous vous recommandons d'échantillonner de nouveau dès que possible afin de contrôler la situation.

Wear

Les taux d'usure de tous les composants sont normaux.

Contamination

Il y a une quantité modérée de particules (de 4 à 14 microns) dans l'huile.

Fluid Condition

Les niveaux d'additifs indiquent l'ajout d'une autre marque ou d'un autre type d'huile. l'huile peut encore servir si la contamination peut être réduite à un niveau acceptable.

SAMPLE INFORMATION

method	limit/base	current	history1	history2
Sample Number	Client Info	GFL0084479	GFL0084482	GFL0062128
Sample Date	Client Info	25 Jul 2023	19 Jun 2023	29 May 2023
Machine Age	kms Client Info	157258	151902	148922
Oil Age	kms Client Info	0	0	0
Oil Changed	Client Info	Not Chngd	Not Chngd	Not Chngd
Sample Status		ABNORMAL	SEVERE	SEVERE

WEAR METALS

method	limit/base	current	history1	history2
Iron ppm ASTM D5185(m)	>50	4	4	5
Chromium ppm ASTM D5185(m)	>10	1	1	1
Nickel ppm ASTM D5185(m)	>4	0	0	<1
Titanium ppm ASTM D5185(m)		0	0	0
Silver ppm ASTM D5185(m)		0	0	0
Aluminum ppm ASTM D5185(m)	>5	<1	<1	<1
Lead ppm ASTM D5185(m)	>4	1	<1	<1
Copper ppm ASTM D5185(m)	>15	6	6	6
Tin ppm ASTM D5185(m)	>4	<1	0	<1
Antimony ppm ASTM D5185(m)		0	0	0
Vanadium ppm ASTM D5185(m)		0	0	0
Beryllium ppm ASTM D5185(m)		0	0	0
Cadmium ppm ASTM D5185(m)		0	0	0

ADDITIVES

method	limit/base	current	history1	history2
Boron ppm ASTM D5185(m)	0	1	1	1
Barium ppm ASTM D5185(m)	0	0	0	0
Molybdenum ppm ASTM D5185(m)	0	0	0	0
Manganese ppm ASTM D5185(m)	1	0	0	0
Magnesium ppm ASTM D5185(m)	0	2	2	2
Calcium ppm ASTM D5185(m)	50	631	628	664
Phosphorus ppm ASTM D5185(m)	330	239	231	240
Zinc ppm ASTM D5185(m)	430	87	85	81
Sulfur ppm ASTM D5185(m)	760	1106	1079	1119
Lithium ppm ASTM D5185(m)		<1	<1	<1

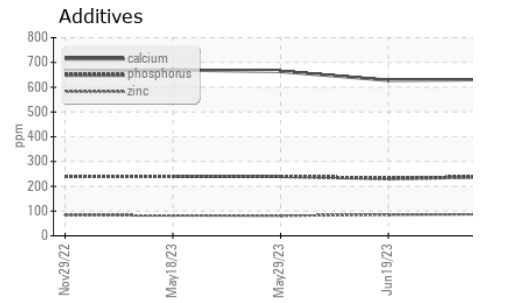
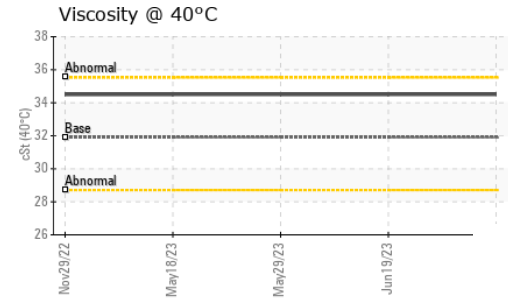
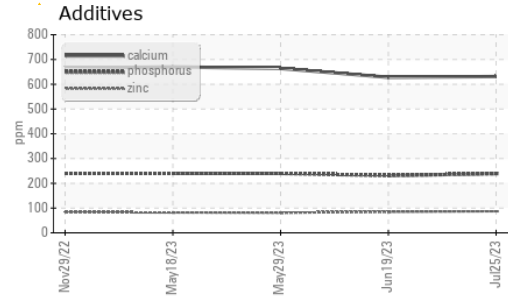
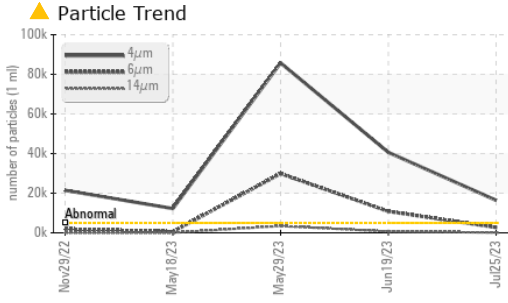
CONTAMINANTS

method	limit/base	current	history1	history2
Silicon ppm ASTM D5185(m)	>15	<1	<1	1
Sodium ppm ASTM D5185(m)		2	3	3
Potassium ppm ASTM D5185(m)	>20	0	0	0

FLUID CLEANLINESS

method	limit/base	current	history1	history2
Particles >4µm ASTM D7647	>5000	▲ 16421	● 40616	● 85749
Particles >6µm ASTM D7647	>1300	▲ 2701	● 10808	● 29873
Particles >14µm ASTM D7647	>160	129	▲ 661	● 3435
Particles >21µm ASTM D7647	>40	32	▲ 127	● 1048
Particles >38µm ASTM D7647	>10	1	3	▲ 35
Particles >71µm ASTM D7647	>3	0	0	2
Oil Cleanliness ISO 4406 (c)	>19/17/14	▲ 21/19/14	● 23/21/17	● 24/22/19

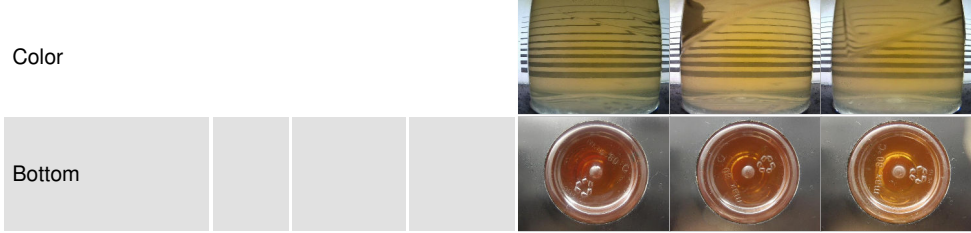
OIL ANALYSIS REPORT



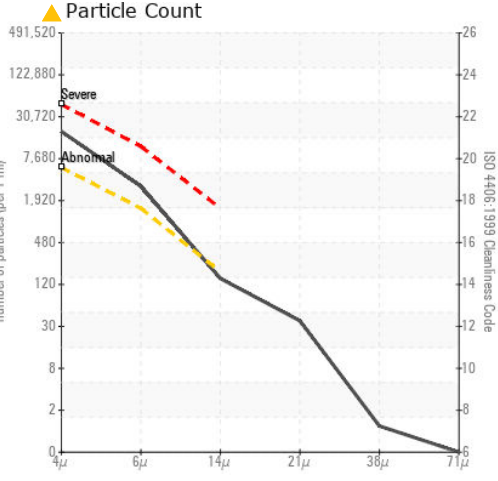
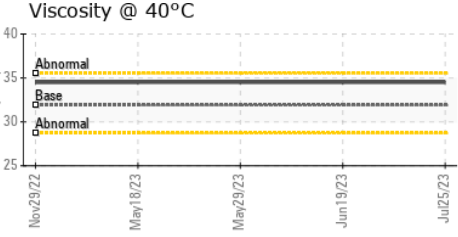
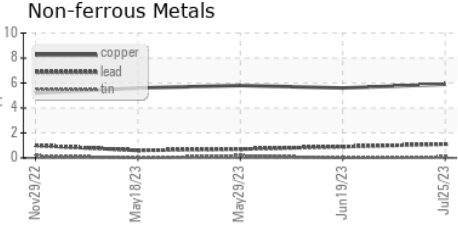
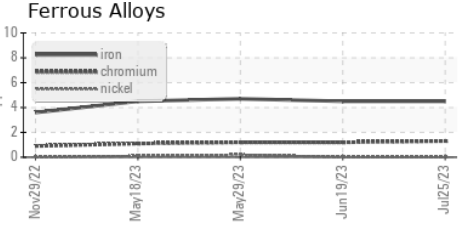
VISUAL	method	limit/base	current	history1	history2
White Metal	scalar	Visual*	NONE	NONE	NONE
Yellow Metal	scalar	Visual*	NONE	NONE	NONE
Precipitate	scalar	Visual*	NONE	NONE	NONE
Silt	scalar	Visual*	NONE	NONE	NONE
Debris	scalar	Visual*	NONE	VLITE	NONE
Sand/Dirt	scalar	Visual*	NONE	NONE	VLITE
Appearance	scalar	Visual*	NORML	NORML	NORML
Odor	scalar	Visual*	NORML	NORML	NORML
Emulsified Water	scalar	Visual*	>0.1	NEG	NEG
Free Water	scalar	Visual*		NEG	NEG

FLUID PROPERTIES	method	limit/base	current	history1	history2
Visc @ 40°C	cSt	ASTM D7279(m)	31.9	34.5	34.5

SAMPLE IMAGES



GRAPHS



Laboratory : WearCheck - C8-1175 Appleby Line, Burlington, ON L7L 5H9 GFL Environmental - 780 - GMA - ICI - Solid Waste
Sample No. : GFL0084479 **Received** : 28 Jul 2023
Lab Number : 02572965 **Diagnosed** : 31 Jul 2023
Unique Number : 5618016 **Diagnostician** : Kevin Marson
Test Package : MOB 1 (Additional Tests: PrtCount)
 To discuss this sample report, contact Customer Service at 1-800-268-2131.
 Test denoted (*) outside scope of accreditation, (m) method modified, (e) tested at external lab.
 Validity of results and interpretation are based on the sample and information as supplied.

4365 boul. St-Elzear Ouest,
 Laval, QC
 CA H7P 4J3
 Contact: Pieces Laval
 pieces.laval@gflenv.com
 T: (450)687-3838
 F: