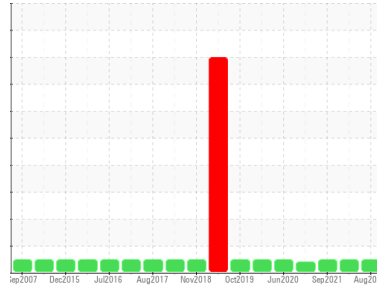


# GREASE ANALYSIS

Sample Rating Trend



**NORMAL**



Area  
**Cranes**  
Machine Id  
**Crane - Fwd Slew Brg Grease (S/N Sample Tag: MA-04001)**  
Component  
**Forward Grease**  
Fluid  
**PETRO CANADA PRECISION XL EP2 (--- LTR)**

## DIAGNOSIS

### Recommendation

Resample at the next service interval to monitor.

### Wear

All component wear rates are normal.

### Grease Condition

The condition of the grease is acceptable for the time in service.

### Contaminants

There is no indication of any contamination in the grease.

## SAMPLE INFORMATION

	method	limit/base	current	history1	history2
Sample Number	Client Info		<b>PC0039821</b>	PC0051999	PC
Sample Date	Client Info		<b>16 Aug 2023</b>	02 May 2023	20 Sep 2021
Machine Age	hrs	Client Info	<b>0</b>	0	0
Grease Age	hrs	Client Info	<b>0</b>	0	0
Grease Serviced	Client Info		<b>N/A</b>	N/A	N/A
Sample Status			<b>NORMAL</b>	NORMAL	NORMAL

## WEAR METALS

	method	limit/base	current	history1	history2
PQ	ASTM D8184*	>200	<b>390</b>	290	240
Iron	ppm	ASTM D5185(m)	<b>64</b>	43	40
Chromium	ppm	ASTM D5185(m)	<b>&lt;1</b>	0	<1
Nickel	ppm	ASTM D5185(m)	<b>0</b>	<1	1
Cadmium	ppm	ASTM D5185(m)	<b>0</b>	0	0
Titanium	ppm	ASTM D5185(m)	<b>&lt;1</b>	<1	<1
Vanadium	ppm	ASTM D5185(m)	<b>0</b>	0	0
Lead	ppm	ASTM D5185(m)	<b>2</b>	<1	4
Copper	ppm	ASTM D5185(m)	<b>&lt;1</b>	<1	<1
Tin	ppm	ASTM D5185(m)	<b>0</b>	0	0
Silver	ppm	ASTM D5185(m)	<b>0</b>	0	<1

## ADDITIVES

	method	limit/base	current	history1	history2
Boron	ppm	ASTM D5185(m)	<b>2</b>	<1	3
Magnesium	ppm	ASTM D5185(m)	<b>5</b>	<1	3
Manganese	ppm	ASTM D5185(m)	<b>&lt;1</b>	<1	<1
Molybdenum	ppm	ASTM D5185(m)	<b>253</b>	7	27
Phosphorus	ppm	ASTM D5185(m)	<b>43</b>	137	41
Zinc	ppm	ASTM D5185(m)	<b>52</b>	113	34
Antimony	ppm	ASTM D5185(m)	<b>25</b>	67	15

## THICKENER/SOAP

	method	limit/base	current	history1	history2
Aluminum	ppm	ASTM D5185(m)	<b>2</b>	<1	7
Barium	ppm	ASTM D5185(m)	<b>2</b>	1	4
Calcium	ppm	ASTM D5185(m)	<b>118</b>	19	138
Sodium	ppm	ASTM D5185(m)	<b>34</b>	6	19
Lithium	ppm	ASTM D5185(m)	<b>254</b>	215	155
Sulfur	ppm	ASTM D5185(m)	<b>740</b>	771	670

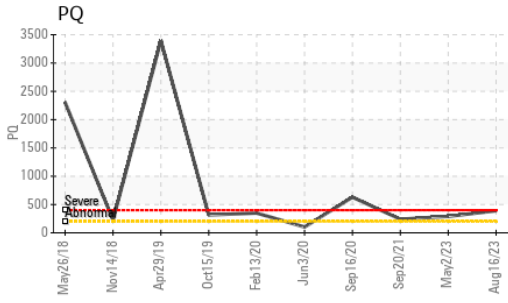
## CONTAMINANTS

	method	limit/base	current	history1	history2
Silicon	ppm	ASTM D5185(m)	<b>4</b>	1	20
Potassium	ppm	ASTM D5185(m)	<b>2</b>	0	1

## GREASE CONDITION

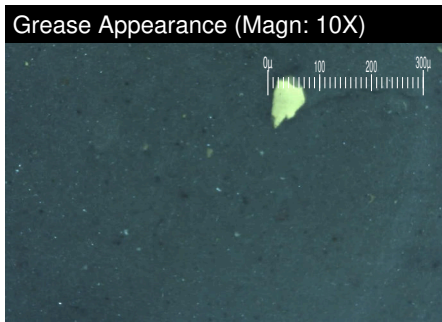
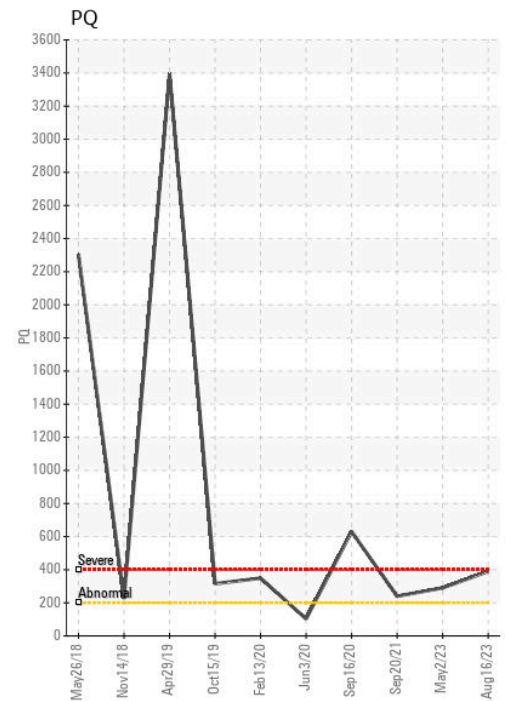
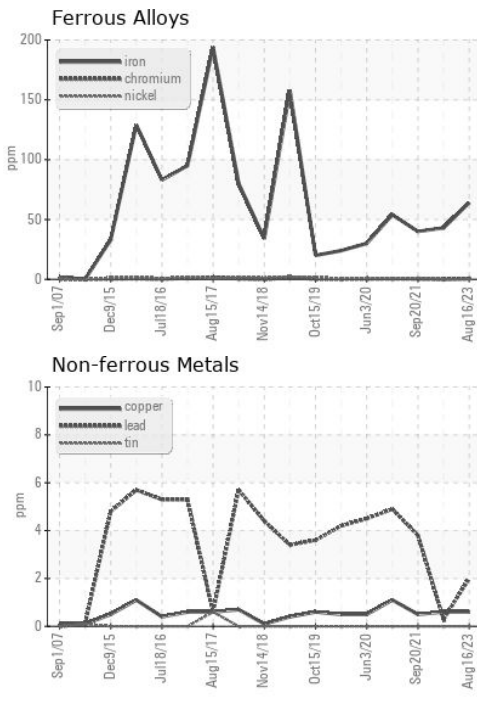
	method	limit/base	current	history1	history2
Grease Color	Visual*	Brown	<b>Brown</b>	Green	Brown
Texture	In-house*	Stringy	<b>Short fiber</b>	Stringy	Long fiber
NLGI Consistency	NLGI Scale SKF Method*	2	<b>2</b>	3	1-2

# GREASE ANALYSIS



SAMPLE IMAGES	method	limit/base	current	history1	history2
Color					
Bottom					
PrtFilter					

## GRAPHS



ISO 17025:2017  
Accredited  
Laboratory

**Laboratory** : WearCheck - C8-1175 Appleby Line, Burlington, ON L7L 5H9  
**Sample No.** : PC0039821 **Received** : 17 Aug 2023  
**Lab Number** : 02576630 **Diagnosed** : 21 Aug 2023  
**Unique Number** : 5629690 **Diagnostician** : Bill Quesnel  
**Test Package** : GRS 1 ( Additional Tests: BottomAnalysis )

To discuss this sample report, contact Customer Service at 1-800-268-2131.  
 Test denoted (\*) outside scope of accreditation, (m) method modified, (e) tested at external lab.  
 Validity of results and interpretation are based on the sample and information as supplied.

**Suncor - Terra Nova Projects**  
 Scotia Centre, 235 Water Street  
 St. John's, NL  
 CA A1C 1B6  
 Contact: Josh Hynes  
 joshhynes@suncor.com  
 T: (709)778-3575  
 F: (709)724-2835