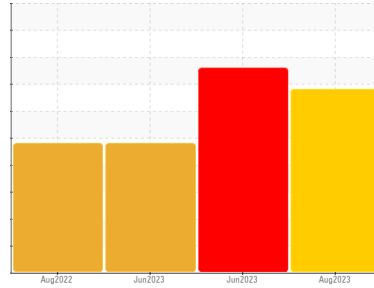




OIL ANALYSIS REPORT

Sample Rating Trend



ISO



Machine Id
4725

Component
Hydraulic System

Fluid
PETRO CANADA HYDREX MV 32 (--- GAL)

DIAGNOSIS

Recommendation

Nous vous recommandons de vérifier tous les endroits par lesquels des contaminants peuvent pénétrer dans le système. Nous vous recommandons de remplacer le filtre et d'utiliser un système de filtrage hors-ligne afin d'améliorer la propreté du fluide. Le reniflard d'air doit être réparé. S'il n'est pas classé, nous vous recommandons de le remplacer par un reniflard à air adapté au micron et / ou au dessiccant. Si évalué, nous vous recommandons de réparer / remplacer le reniflard. Confirm the source of the lubricant being utilized for top-up/fill. Échantillonner de nouveau dans 30 à 45 jours afin de contrôler la situation.

Wear

Le taux de fer est anormal. Le bas indice ferreux (PQ) indique que l'usure ferreuse est due à de la corrosion.

Contamination

Il y a une quantité élevée de matières particulaires (2 à 100 µm de taille) présente dans l'huile.

Fluid Condition

Les niveaux d'additifs indiquent l'ajout d'une autre marque ou d'un autre type d'huile. l'huile n'est plus en état de service en raison d'une usure anormale et/ou sévère.

SAMPLE INFORMATION

	method	limit/base	current	history1	history2
Sample Number	Client Info		GFL0088800	GFL0084423	GFL0084463
Sample Date	Client Info		24 Aug 2023	16 Jun 2023	02 Jun 2023
Machine Age	kms	Client Info	500427	500327	500033
Oil Age	kms	Client Info	0	0	0
Oil Changed	Client Info		Not Changed	Not Changd	Not Changed
Sample Status			SEVERE	SEVERE	SEVERE

WEAR METALS

	method	limit/base	current	history1	history2
PQ	ASTM D8184*		0	---	1
Iron	ppm	ASTM D5185(m) >20	▲ 36	12	▲ 34
Chromium	ppm	ASTM D5185(m) >10	3	<1	3
Nickel	ppm	ASTM D5185(m) >10	<1	<1	0
Titanium	ppm	ASTM D5185(m)	0	0	<1
Silver	ppm	ASTM D5185(m)	0	0	0
Aluminum	ppm	ASTM D5185(m) >10	1	2	1
Lead	ppm	ASTM D5185(m) >10	4	<1	4
Copper	ppm	ASTM D5185(m) >75	15	1	15
Tin	ppm	ASTM D5185(m) >10	<1	0	<1
Antimony	ppm	ASTM D5185(m)	0	0	0
Vanadium	ppm	ASTM D5185(m)	0	0	0
Beryllium	ppm	ASTM D5185(m)	0	0	0
Cadmium	ppm	ASTM D5185(m)	0	0	0

ADDITIVES

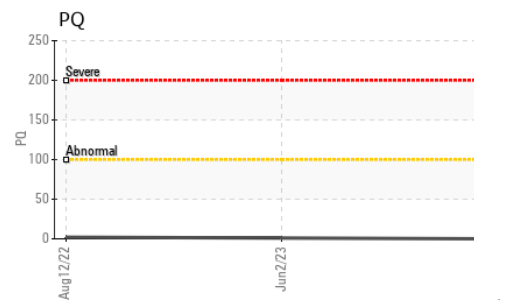
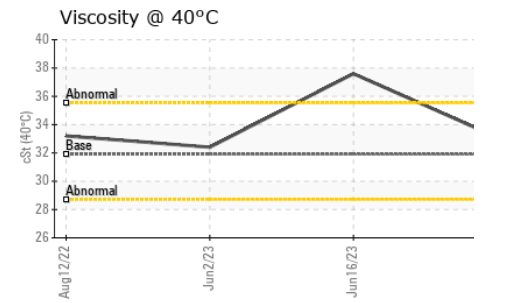
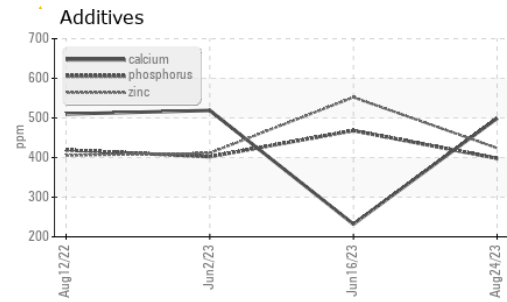
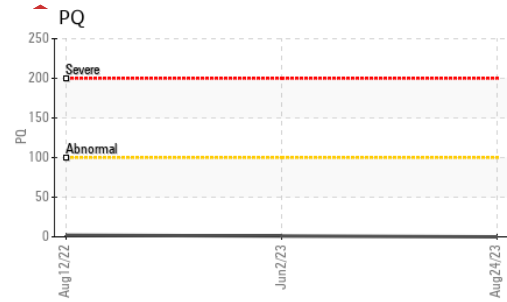
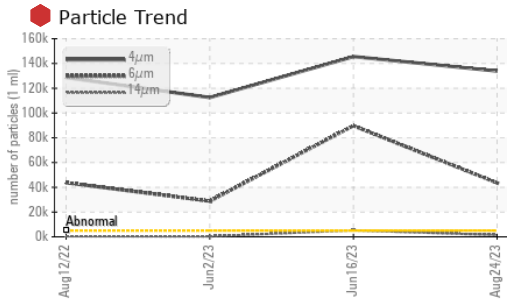
	method	limit/base	current	history1	history2
Boron	ppm	ASTM D5185(m) 0	44	<1	43
Barium	ppm	ASTM D5185(m) 0	0	0	0
Molybdenum	ppm	ASTM D5185(m) 0	15	11	15
Manganese	ppm	ASTM D5185(m) 1	<1	<1	<1
Magnesium	ppm	ASTM D5185(m) 0	19	175	18
Calcium	ppm	ASTM D5185(m) 50	499	232	519
Phosphorus	ppm	ASTM D5185(m) 330	398	468	402
Zinc	ppm	ASTM D5185(m) 430	424	552	411
Sulfur	ppm	ASTM D5185(m) 760	2265	1094	2318
Lithium	ppm	ASTM D5185(m)	<1	<1	<1

CONTAMINANTS

	method	limit/base	current	history1	history2
Silicon	ppm	ASTM D5185(m) >20	4	2	4
Sodium	ppm	ASTM D5185(m)	3	1	3
Potassium	ppm	ASTM D5185(m) >20	<1	<1	<1

FLUID CLEANLINESS

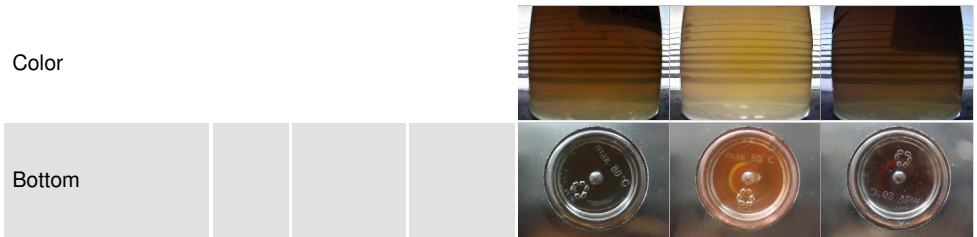
	method	limit/base	current	history1	history2
Particles >4µm	ASTM D7647	>5000	● 133898	● 145558	● 112508
Particles >6µm	ASTM D7647	>1300	● 43536	● 89708	● 28844
Particles >14µm	ASTM D7647	>160	● 1373	● 5265	▲ 331
Particles >21µm	ASTM D7647	>40	▲ 288	● 610	48
Particles >38µm	ASTM D7647	>10	3	9	1
Particles >71µm	ASTM D7647	>3	0	1	0
Oil Cleanliness	ISO 4406 (c)	>19/17/14	● 24/23/18	● 24/24/20	● 24/22/16



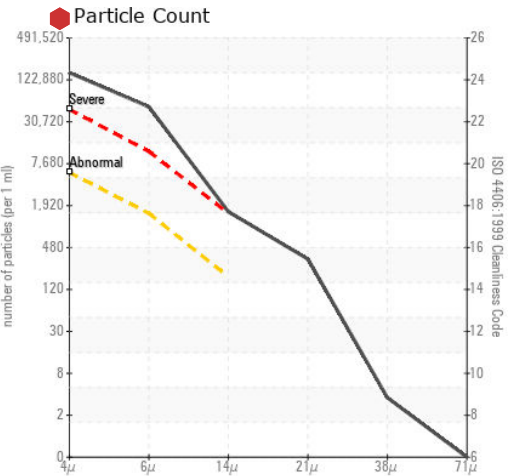
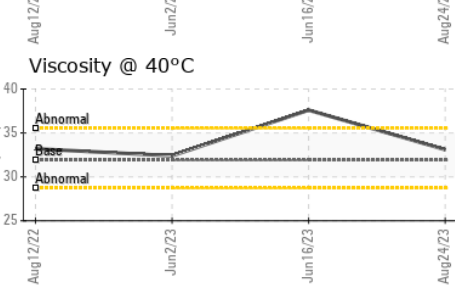
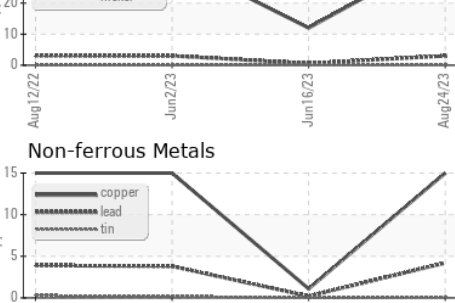
VISUAL	method	limit/base	current	history1	history2
White Metal	scalar	Visual*	NONE	NONE	NONE
Yellow Metal	scalar	Visual*	NONE	NONE	NONE
Precipitate	scalar	Visual*	NONE	NONE	NONE
Silt	scalar	Visual*	NONE	NONE	NONE
Debris	scalar	Visual*	NONE	NONE	NONE
Sand/Dirt	scalar	Visual*	NONE	NONE	NONE
Appearance	scalar	Visual*	NORML	NORML	NORML
Odor	scalar	Visual*	NORML	NORML	NORML
Emulsified Water	scalar	Visual*	>0.1	NEG	NEG
Free Water	scalar	Visual*		NEG	NEG

FLUID PROPERTIES	method	limit/base	current	history1	history2
Visc @ 40°C	cSt	ASTM D7279(m)	31.9	33.1	37.6

SAMPLE IMAGES	method	limit/base	current	history1	history2
---------------	--------	------------	---------	----------	----------



GRAPHS



Laboratory : WearCheck - C8-1175 Appleby Line, Burlington, ON L7L 5H9 GFL Environmental - 780 - GMA - ICI - Solid Waste
Sample No. : GFL0088800 **Received** : 05 Sep 2023
Lab Number : 02580400 **Diagnosed** : 06 Sep 2023
Unique Number : 5633460 **Diagnostician** : Kevin Marson
Test Package : MOB 1 (Additional Tests: PQ, PrtCount)
 To discuss this sample report, contact Customer Service at 1-800-268-2131.
 Test denoted (*) outside scope of accreditation, (m) method modified, (e) tested at external lab.
 Validity of results and interpretation are based on the sample and information as supplied.

4365 boul. St-Elzear Ouest,
 Laval, QC
 CA H7P 4J3
 Contact: Pieces Laval
 pieces.laval@gflenv.com
 T: (450)687-3838
 F: