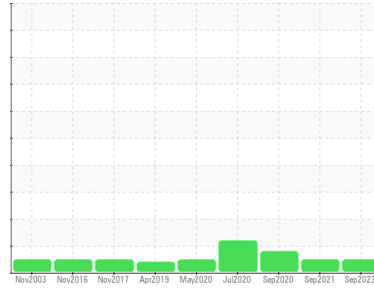


Area
Fwd Machinery Space [450204323]
 Machine Id
Generator - SKSG Turbocharger B - Compressor Side (S/N Sample Tag CD-86201-S5)
 Component
Oil
 Fluid
NOT GIVEN (1 LTR)



DIAGNOSIS

Recommendation
 Resample at the next service interval to monitor. The fluid was not specified, however, a fluid match indicates that this fluid is ISO 68 Environmental Oil. Please confirm the oil type and grade, and specify the brand of the oil on your next sample. Please specify the brand, type, and viscosity of the oil on your next sample.

Wear
 All component wear rates are normal.

Contamination
 The system cleanliness is acceptable for your target ISO 4406 cleanliness code. The system and fluid cleanliness is acceptable.

Fluid Condition
 The AN level is acceptable for this fluid. The condition of the oil is suitable for further service.

SAMPLE INFORMATION method limit/base current history1 history2

Sample Number	Client Info	PC	PC	PC0035657
Sample Date	Client Info	12 Sep 2023	27 Sep 2021	27 Sep 2020
Machine Age	hrs Client Info	0	0	0
Oil Age	hrs Client Info	0	0	0
Oil Changed	Client Info	N/A	N/A	N/A
Sample Status		NORMAL	NORMAL	ABNORMAL

WEAR METALS method limit/base current history1 history2

Iron	ppm	ASTM D5185(m)	<1	3	1
Chromium	ppm	ASTM D5185(m)	0	0	0
Nickel	ppm	ASTM D5185(m)	0	<1	0
Titanium	ppm	ASTM D5185(m)	0	0	0
Silver	ppm	ASTM D5185(m)	<1	0	0
Aluminum	ppm	ASTM D5185(m)	0	0	<1
Lead	ppm	ASTM D5185(m)	0	<1	0
Copper	ppm	ASTM D5185(m)	<1	<1	<1
Tin	ppm	ASTM D5185(m)	0	<1	0
Antimony	ppm	ASTM D5185(m)	0	<1	<1
Vanadium	ppm	ASTM D5185(m)	0	0	0
Beryllium	ppm	ASTM D5185(m)	0	0	0
Cadmium	ppm	ASTM D5185(m)	0	0	0

ADDITIVES method limit/base current history1 history2

Boron	ppm	ASTM D5185(m)	<1	<1	<1
Barium	ppm	ASTM D5185(m)	0	1	<1
Molybdenum	ppm	ASTM D5185(m)	0	0	0
Manganese	ppm	ASTM D5185(m)	0	<1	0
Magnesium	ppm	ASTM D5185(m)	0	0	<1
Calcium	ppm	ASTM D5185(m)	<1	2	<1
Phosphorus	ppm	ASTM D5185(m)	808	827	874
Zinc	ppm	ASTM D5185(m)	<1	2	<1
Sulfur	ppm	ASTM D5185(m)	464	485	481
Lithium	ppm	ASTM D5185(m)	<1	<1	<1

CONTAMINANTS method limit/base current history1 history2

Silicon	ppm	ASTM D5185(m)	<1	10	2
Sodium	ppm	ASTM D5185(m)	<1	0	0
Potassium	ppm	ASTM D5185(m) >20	0	<1	<1

FLUID CLEANLINESS method limit/base current history1 history2

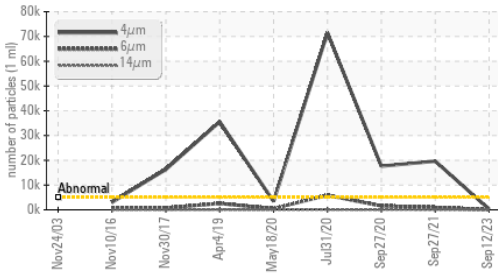
Particles >4µm	ASTM D7647	>5000	292	19639	▲ 17627
Particles >6µm	ASTM D7647	>1300	55	965	▲ 1584
Particles >14µm	ASTM D7647	>160	3	14	28
Particles >21µm	ASTM D7647	>40	1	2	3
Particles >38µm	ASTM D7647	>10	0	0	0
Particles >71µm	ASTM D7647	>3	0	0	0
Oil Cleanliness	ISO 4406 (c)	>19/17/14	15/13/9	21/17/11	▲ 21/18/12

FLUID DEGRADATION method limit/base current history1 history2

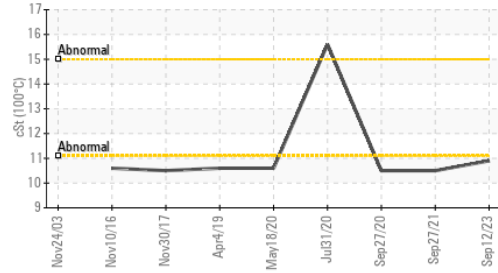
Acid Number (AN)	mg KOH/g	ASTM D974*	0.03	0.02	0.03
------------------	----------	------------	-------------	------	------

OIL ANALYSIS REPORT

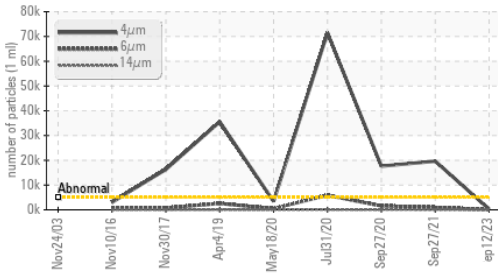
Particle Trend



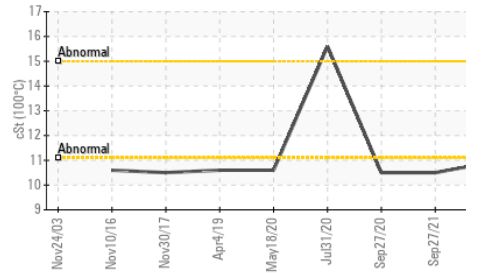
Viscosity @ 100°C



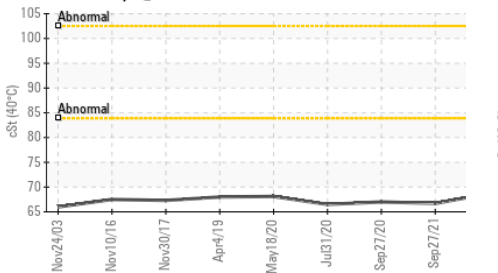
Particle Trend



Viscosity @ 100°C



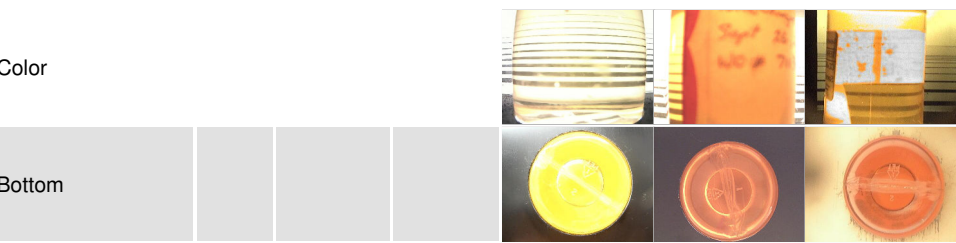
Viscosity @ 40°C



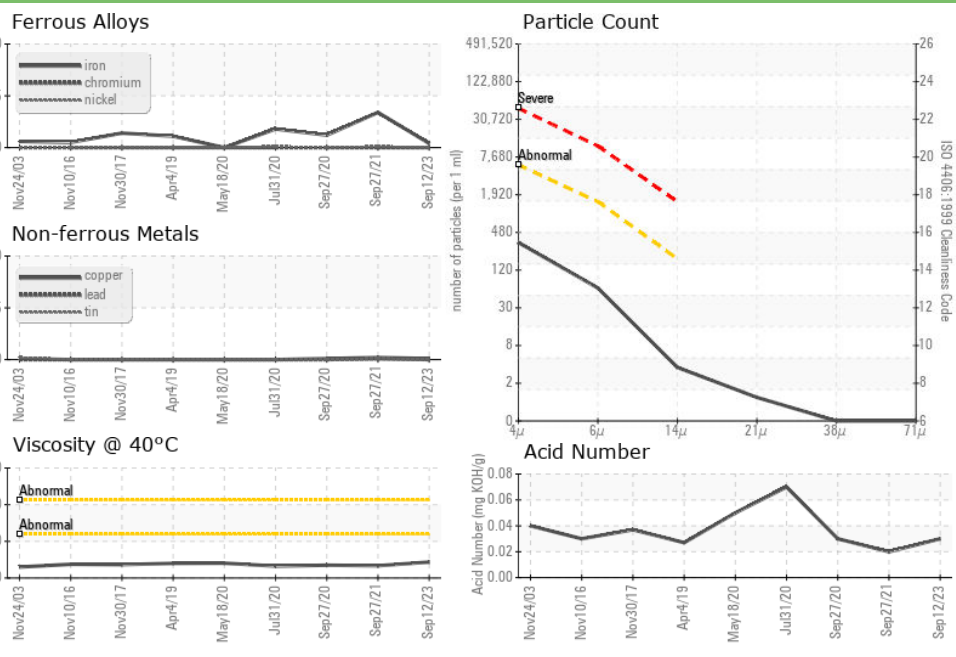
VISUAL	method	limit/base	current	history1	history2
White Metal	scalar	Visual*	NONE	NONE	NONE
Yellow Metal	scalar	Visual*	NONE	NONE	NONE
Precipitate	scalar	Visual*	NONE	NONE	NONE
Silt	scalar	Visual*	NONE	NONE	NONE
Debris	scalar	Visual*	NONE	NONE	NONE
Sand/Dirt	scalar	Visual*	NONE	NONE	NONE
Appearance	scalar	Visual*	NORML	NORML	NORML
Odor	scalar	Visual*	NORML	NORML	NORML
Emulsified Water	scalar	Visual*	NEG	NEG	NEG
Free Water	scalar	Visual*	NEG	NEG	NEG

FLUID PROPERTIES	method	limit/base	current	history1	history2
Visc @ 40°C	cSt	ASTM D7279(m)	68.7	66.7	67.0
Visc @ 100°C	cSt	ASTM D7279(m)	10.9	10.5	10.5
Viscosity Index (VI)	Scale	ASTM D2270*	149	145	144

SAMPLE IMAGES



GRAPHS



Laboratory : WearCheck - C8-1175 Appleby Line, Burlington, ON L7L 5H9
Sample No. : PC
Lab Number : 02584980
Unique Number : 5646045
Test Package : MAR 2 (Additional Tests: KV100, PrtCount, TAN Man, VI)

Suncor - Terra Nova Projects
 Scotia Centre, 235 Water Street
 St. John's, NL
 CA A1C 1B6
 Contact: Josh Hynes
 joshhynes@suncor.com
 T: (709)778-3575
 F: (709)724-2835

To discuss this sample report, contact Customer Service at 1-800-268-2131.
 Test denoted (*) outside scope of accreditation, (m) method modified, (e) tested at external lab.
 Validity of results and interpretation are based on the sample and information as supplied.