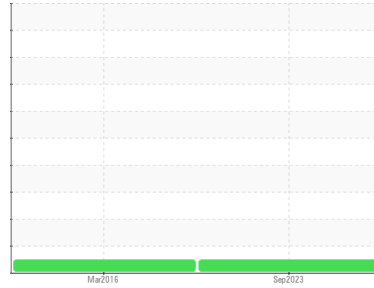


GREASE ANALYSIS

Sample Rating Trend

NORMAL



Area
[450203374]
Machine Id
NC-05603 TORQUE TUBE BEARING
Component
3 Grease
Fluid
PETRO CANADA GREASE OG-1 (--- GAL)

DIAGNOSIS

Recommendation

Resample at the next service interval to monitor.

Wear

All component wear rates are normal.

Grease Condition

The condition of the grease is acceptable for the time in service.

Contaminants

There is no indication of any contamination in the grease.

SAMPLE INFORMATION		method	limit/base	current	history1	history2
Sample Number	Client Info			PC	PC	---
Sample Date	Client Info			18 Sep 2023	07 Mar 2016	---
Machine Age	hrs	Client Info		0	0	---
Grease Age	hrs	Client Info		0	0	---
Grease Serviced	Client Info			N/A	N/A	---
Sample Status				NORMAL	NORMAL	---

WEAR METALS		method	limit/base	current	history1	history2
PQ		ASTM D8184*	>200	0	---	---
Iron	ppm	ASTM D5185(m)	>250	15	<1	---
Chromium	ppm	ASTM D5185(m)	>10	0	0	---
Nickel	ppm	ASTM D5185(m)	>5	<1	0	---
Cadmium	ppm	ASTM D5185(m)		0	0	---
Titanium	ppm	ASTM D5185(m)		0	0	---
Vanadium	ppm	ASTM D5185(m)		0	0	---
Lead	ppm	ASTM D5185(m)	>25	0	0	---
Copper	ppm	ASTM D5185(m)	>75	<1	0	---
Tin	ppm	ASTM D5185(m)	>5	0	0	---
Silver	ppm	ASTM D5185(m)	>5	<1	0	---

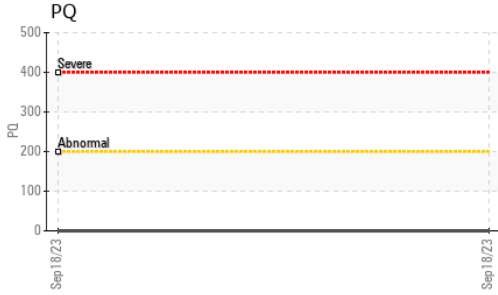
ADDITIVES		method	limit/base	current	history1	history2
Boron	ppm	ASTM D5185(m)		181	2	---
Magnesium	ppm	ASTM D5185(m)		14	<1	---
Manganese	ppm	ASTM D5185(m)		<1	0	---
Molybdenum	ppm	ASTM D5185(m)		0	<1	---
Phosphorus	ppm	ASTM D5185(m)		4	9	---
Zinc	ppm	ASTM D5185(m)		19	4	---
Antimony	ppm	ASTM D5185(m)		0	<1	---

THICKENER/SOAP		method	limit/base	current	history1	history2
Aluminum	ppm	ASTM D5185(m)		2	0	---
Barium	ppm	ASTM D5185(m)		<1	0	---
Calcium	ppm	ASTM D5185(m)		4547	12	---
Sodium	ppm	ASTM D5185(m)		6	<1	---
Lithium	ppm	ASTM D5185(m)		<1	34	---
Sulfur	ppm	ASTM D5185(m)		834	500	---

CONTAMINANTS		method	limit/base	current	history1	history2
Silicon	ppm	ASTM D5185(m)	>150	4	<1	---
Potassium	ppm	ASTM D5185(m)		1	1	---

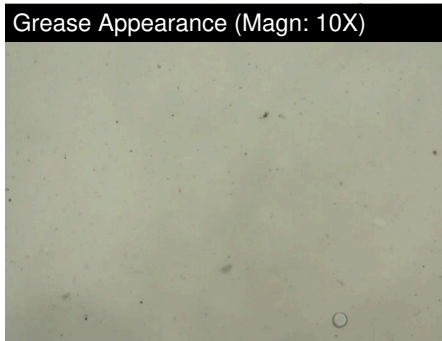
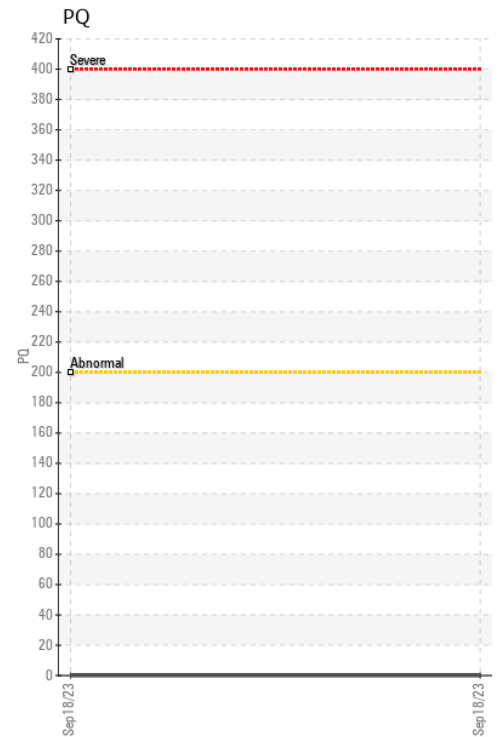
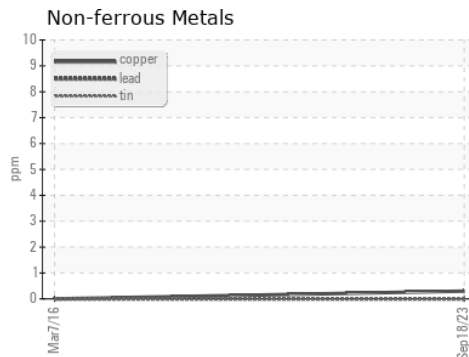
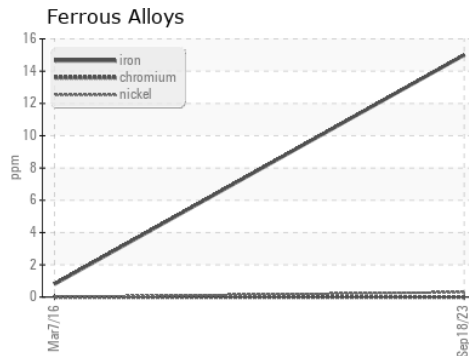
GREASE CONDITION		method	limit/base	current	history1	history2
Grease Color	Visual*	Tan		Cream	---	---
Texture	In-house*	Buttery		Buttery	---	---
NLGI Consistency	NLGI Scale	SKF Method*	1	1	---	---

GREASE ANALYSIS



SAMPLE IMAGES	method	limit/base	current	history1	history2
Color					no image
Bottom					no image
PrtFilter				no image	no image

GRAPHS



Laboratory : WearCheck - C8-1175 Appleby Line, Burlington, ON L7L 5H9
Sample No. : PC **Received** : 11 Oct 2023
Lab Number : 02588451 **Diagnosed** : 12 Oct 2023
Unique Number : 5657517 **Diagnostician** : Bill Quesnel
Test Package : GRS 1 (Additional Tests: BottomAnalysis)

*To discuss this sample report, contact Customer Service at 1-800-268-2131.
 Test denoted (*) outside scope of accreditation, (m) method modified, (e) tested at external lab.
 Validity of results and interpretation are based on the sample and information as supplied.*

Suncor - Terra Nova Projects
 Scotia Centre, 235 Water Strret
 St. John's, NL
 CA A1C 1B6
 Contact: Josh Hynes
 joshynes@suncor.com
 T: (709)778-3575
 F: (709)724-2835