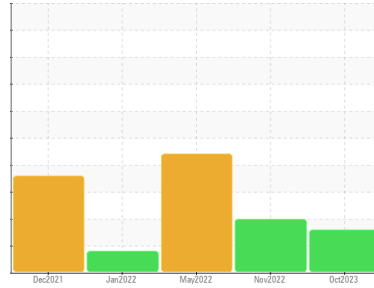




OIL ANALYSIS REPORT

Sample Rating Trend



VISUAL METAL



Machine Id
701089

Component
Hydraulic System

Fluid
PETRO CANADA HYDREX MV 32 (--- GAL)

DIAGNOSIS

Recommendation

Nous vous recommandons de vérifier tous les endroits par lesquels des contaminants peuvent pénétrer dans le système. Nous vous recommandons de vérifier la présence de particules métalliques visibles dans l'huile. Nous vous recommandons d'échantillonner de nouveau dès que possible afin de contrôler la situation. Le contaminant anormal pourrait être dû à une mauvaise technique d'échantillonnage. **AVIS DE NON-RESPONSABILITÉ:** L'interprétation des résultats est basée sur l'échantillon reçu du client. La provenance de l'échantillon et la méthode d'échantillonnage ne peut être vérifiée.

Wear

Présence d'une faible concentration de métal visible.

Contamination

Il y a une légère concentration de la saleté et débris visible, présente dans l'huile. La propreté du système est acceptable pour votre objectif de propreté ISO 4406.

Fluid Condition

l'huile peut encore servir si la contamination peut être réduite à un niveau acceptable.

SAMPLE INFORMATION

method	limit/base	current	history1	history2
Sample Number	Client Info	GFL0096427	GFL0061765	GFL0043138
Sample Date	Client Info	13 Oct 2023	17 Nov 2022	23 May 2022
Machine Age	hrs	11100	9173	8004
Oil Age	hrs	0	0	0
Oil Changed	Client Info	Not Chngd	N/A	Not Chngd
Sample Status		ABNORMAL	ABNORMAL	SEVERE

WEAR METALS

method	limit/base	current	history1	history2	
Iron	ppm	ASTM D5185(m) >40	10	2	3
Chromium	ppm	ASTM D5185(m) >5	4	1	1
Nickel	ppm	ASTM D5185(m) >2	<1	<1	<1
Titanium	ppm	ASTM D5185(m) >2	0	0	0
Silver	ppm	ASTM D5185(m)	<1	<1	0
Aluminum	ppm	ASTM D5185(m) >8	<1	0	<1
Lead	ppm	ASTM D5185(m) >5	<1	0	0
Copper	ppm	ASTM D5185(m) >20	2	0	<1
Tin	ppm	ASTM D5185(m) >2	0	0	0
Antimony	ppm	ASTM D5185(m) >2	0	<1	0
Vanadium	ppm	ASTM D5185(m)	0	0	0
Beryllium	ppm	ASTM D5185(m)	0	0	0
Cadmium	ppm	ASTM D5185(m)	0	0	0

ADDITIVES

method	limit/base	current	history1	history2	
Boron	ppm	ASTM D5185(m) 0	<1	<1	<1
Barium	ppm	ASTM D5185(m) 0	<1	0	0
Molybdenum	ppm	ASTM D5185(m) 0	0	0	0
Manganese	ppm	ASTM D5185(m) 1	0	0	0
Magnesium	ppm	ASTM D5185(m) 0	<1	1	<1
Calcium	ppm	ASTM D5185(m) 50	54	54	53
Phosphorus	ppm	ASTM D5185(m) 330	331	361	347
Zinc	ppm	ASTM D5185(m) 430	425	419	427
Sulfur	ppm	ASTM D5185(m) 760	750	773	784
Lithium	ppm	ASTM D5185(m)	<1	<1	<1

CONTAMINANTS

method	limit/base	current	history1	history2	
Silicon	ppm	ASTM D5185(m) >20	2	<1	<1
Sodium	ppm	ASTM D5185(m)	3	<1	2
Potassium	ppm	ASTM D5185(m) >20	<1	<1	<1

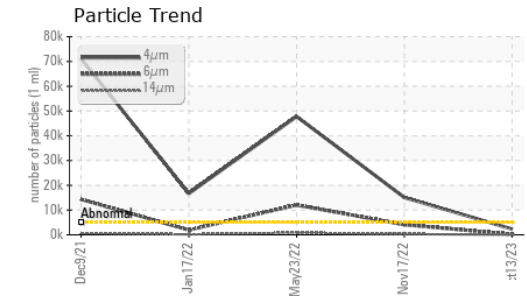
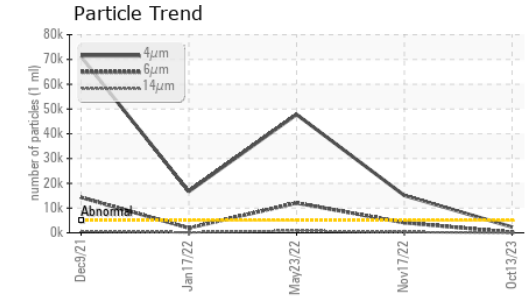
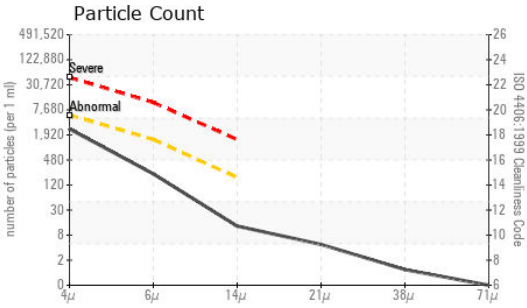
FLUID CLEANLINESS

method	limit/base	current	history1	history2
Particles >4µm	ASTM D7647 >5000	2336	▲ 15079	● 47776
Particles >6µm	ASTM D7647 >1300	196	▲ 4100	● 12067
Particles >14µm	ASTM D7647 >160	11	▲ 290	▲ 859
Particles >21µm	ASTM D7647 >40	4	▲ 75	▲ 188
Particles >38µm	ASTM D7647 >10	1	1	6
Particles >71µm	ASTM D7647 >3	0	0	0
Oil Cleanliness	ISO 4406 (c) >19/17/14	18/15/11	▲ 21/19/15	● 23/21/17

Particle Filter (Magn: 100 x)



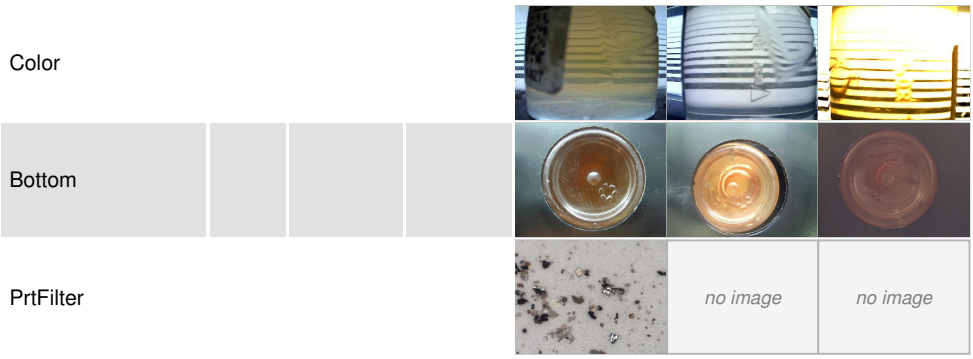
OIL ANALYSIS REPORT



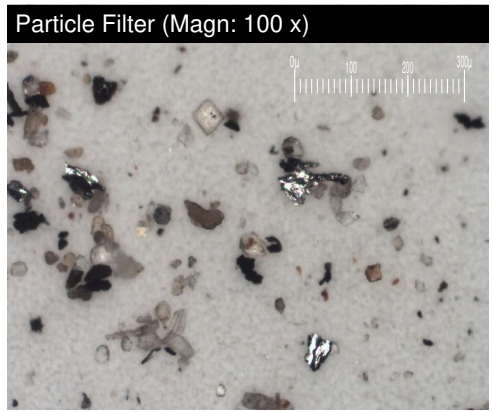
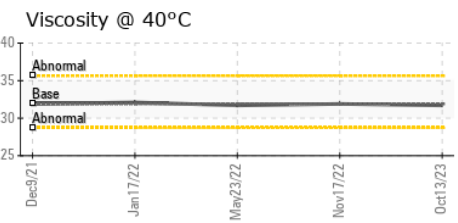
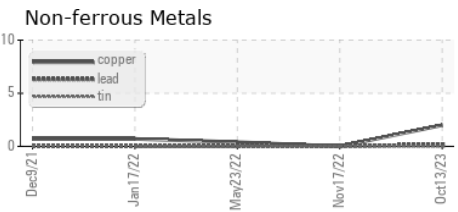
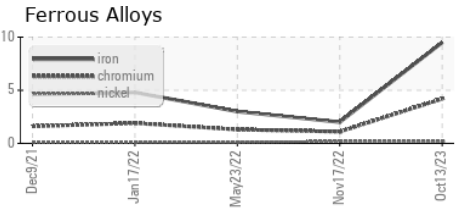
VISUAL	method	limit/base	current	history1	history2	
White Metal	scalar	Visual*	NONE	▲ VLITE	NONE	NONE
Yellow Metal	scalar	Visual*	NONE	NONE	NONE	NONE
Precipitate	scalar	Visual*	NONE	NONE	NONE	NONE
Silt	scalar	Visual*	NONE	NONE	NONE	NONE
Debris	scalar	Visual*	NONE	▲ VLITE	VLITE	NONE
Sand/Dirt	scalar	Visual*	NONE	NONE	NONE	NONE
Appearance	scalar	Visual*	NORML	NORML	NORML	NORML
Odor	scalar	Visual*	NORML	NORML	NORML	NORML
Emulsified Water	scalar	Visual*	>0.1	NEG	NEG	NEG
Free Water	scalar	Visual*		NEG	NEG	NEG

FLUID PROPERTIES	method	limit/base	current	history1	history2	
Visc @ 40°C	cSt	ASTM D7279(m)	31.9	31.7	31.9	31.7

SAMPLE IMAGES	method	limit/base	current	history1	history2
---------------	--------	------------	---------	----------	----------



GRAPHS



Laboratory : WearCheck - C8-1175 Appleby Line, Burlington, ON L7L 5H9 GFL Environmental - 747 - GMA - Solid Waste
Sample No. : GFL0096427 **Received** : 17 Oct 2023
Lab Number : 02589660 **Diagnosed** : 19 Oct 2023
Unique Number : 5658726 **Diagnostician** : Kevin Marson
Test Package : MOB 1 (Additional Tests: Bottom, BottomAnalysis, FilterPatch, PrtCount, PrtFilter)
 To discuss this sample report, contact Customer Service at 1-800-268-2131.
 Test denoted (*) outside scope of accreditation, (m) method modified, (e) tested at external lab.
 Validity of results and interpretation are based on the sample and information as supplied.

4 Chemin du Tremblay,
 Boucherville, QC
 CA J4B 6Z5
 Contact: Steve Voyer
 svoyer@matrec.ca
 T: (450)641-3070
 F: