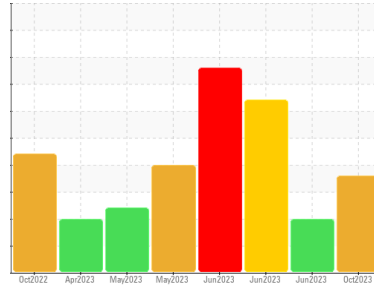




# OIL ANALYSIS REPORT

Sample Rating Trend



ISO



Machine Id  
**711022**  
Component  
**Hydraulic System**  
Fluid  
**PETRO CANADA HYDREX MV 32 (--- GAL)**

## DIAGNOSIS

### Recommendation

Vérifier les scelles et/ou les filtres pour des points d'entrée des contaminants. Le reniflard d'air doit être réparé. S'il n'est pas classé, nous vous recommandons de le remplacer par un reniflard à air adapté au micron et / ou au dessicant. Si évalué, nous vous recommandons de réparer / remplacer le reniflard. Nous avons pris note que le filtre a été remplacé au moment de l'échantillonnage. Échantillonner de nouveau dans 30 à 45 jours afin de contrôler la situation.

### Wear

Les taux d'usure de tous les composants sont normaux.

### Contamination

Il y a une grande quantité de limon (particules de 4 à 14 microns) dans l'huile.

### Fluid Condition

L'huile peut encore servir si la contamination peut être réduite à un niveau acceptable.

## SAMPLE INFORMATION

	method	limit/base	current	history1	history2
Sample Number	Client Info		<b>GFL0097131</b>	GFL0084473	GFL0047516
Sample Date	Client Info		<b>13 Oct 2023</b>	22 Jun 2023	18 Jun 2023
Machine Age	hrs	Client Info	<b>5072</b>	90492	69014
Oil Age	hrs	Client Info	<b>1200</b>	0	1200
Oil Changed	Client Info		<b>Not Chngd</b>	Not Chngd	N/A
Sample Status			<b>SEVERE</b>	SEVERE	SEVERE

## WEAR METALS

	method	limit/base	current	history1	history2
Iron	ppm	ASTM D5185(m) >50	<b>15</b>	12	12
Chromium	ppm	ASTM D5185(m) >10	<b>3</b>	3	3
Nickel	ppm	ASTM D5185(m) >4	<b>0</b>	<1	0
Titanium	ppm	ASTM D5185(m)	<b>0</b>	<1	<1
Silver	ppm	ASTM D5185(m)	<b>&lt;1</b>	0	0
Aluminum	ppm	ASTM D5185(m) >5	<b>2</b>	2	2
Lead	ppm	ASTM D5185(m) >4	<b>0</b>	0	0
Copper	ppm	ASTM D5185(m) >15	<b>2</b>	2	2
Tin	ppm	ASTM D5185(m) >4	<b>0</b>	0	<1
Antimony	ppm	ASTM D5185(m)	<b>0</b>	0	<1
Vanadium	ppm	ASTM D5185(m)	<b>0</b>	0	0
Beryllium	ppm	ASTM D5185(m)	<b>0</b>	0	0
Cadmium	ppm	ASTM D5185(m)	<b>0</b>	0	0

## ADDITIVES

	method	limit/base	current	history1	history2
Boron	ppm	ASTM D5185(m) 0	<b>&lt;1</b>	<1	<1
Barium	ppm	ASTM D5185(m) 0	<b>&lt;1</b>	0	0
Molybdenum	ppm	ASTM D5185(m) 0	<b>&lt;1</b>	1	<1
Manganese	ppm	ASTM D5185(m) 1	<b>0</b>	0	<1
Magnesium	ppm	ASTM D5185(m) 0	<b>26</b>	19	19
Calcium	ppm	ASTM D5185(m) 50	<b>78</b>	81	82
Phosphorus	ppm	ASTM D5185(m) 330	<b>336</b>	368	369
Zinc	ppm	ASTM D5185(m) 430	<b>426</b>	427	435
Sulfur	ppm	ASTM D5185(m) 760	<b>774</b>	797	840
Lithium	ppm	ASTM D5185(m)	<b>&lt;1</b>	<1	<1

## CONTAMINANTS

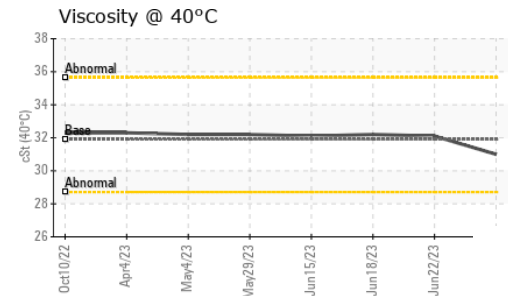
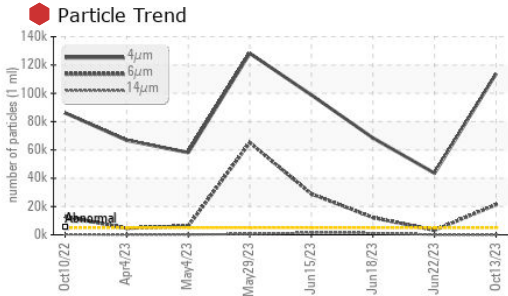
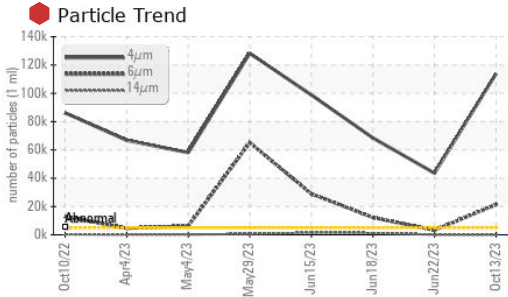
	method	limit/base	current	history1	history2
Silicon	ppm	ASTM D5185(m) >15	<b>6</b>	6	5
Sodium	ppm	ASTM D5185(m)	<b>11</b>	13	12
Potassium	ppm	ASTM D5185(m) >20	<b>2</b>	6	2

## FLUID CLEANLINESS

	method	limit/base	current	history1	history2
Particles >4µm	ASTM D7647	>5000	<b>113829</b>	43552	68459
Particles >6µm	ASTM D7647	>1300	<b>21271</b>	3252	12213
Particles >14µm	ASTM D7647	>160	<b>61</b>	118	1202
Particles >21µm	ASTM D7647	>40	<b>12</b>	31	343
Particles >38µm	ASTM D7647	>10	<b>1</b>	1	15
Particles >71µm	ASTM D7647	>3	<b>0</b>	1	1
Oil Cleanliness	ISO 4406 (c)	>19/17/14	<b>24/22/13</b>	23/19/14	23/21/17



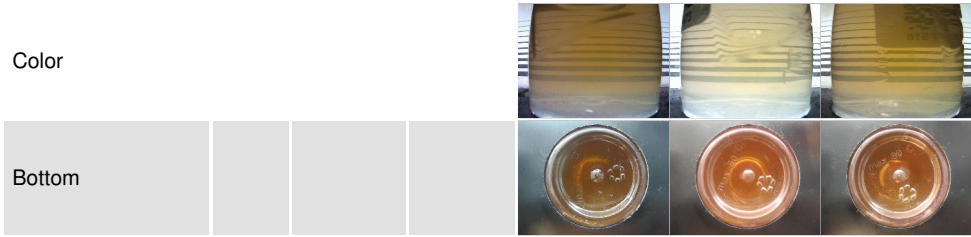
# OIL ANALYSIS REPORT



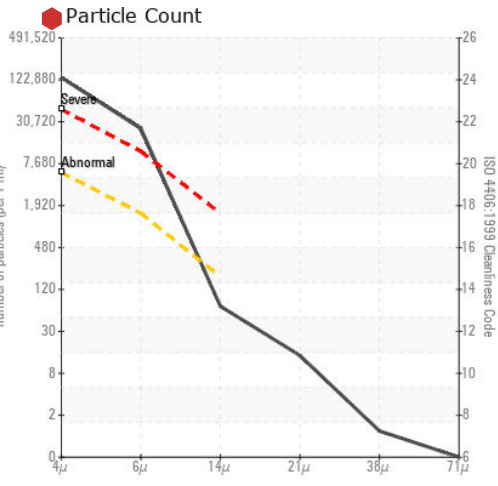
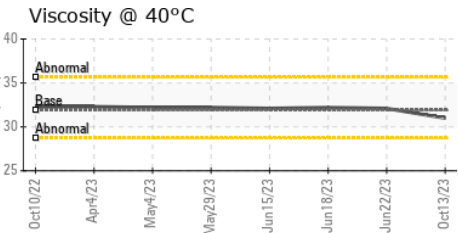
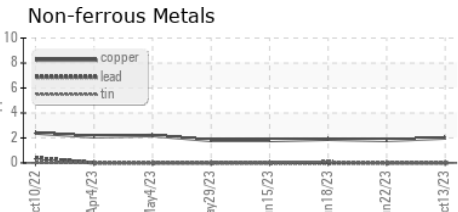
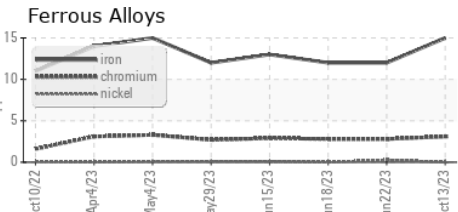
VISUAL	method	limit/base	current	history1	history2
White Metal	scalar	Visual*	NONE	NONE	NONE
Yellow Metal	scalar	Visual*	NONE	NONE	NONE
Precipitate	scalar	Visual*	NONE	NONE	NONE
Silt	scalar	Visual*	NONE	NONE	NONE
Debris	scalar	Visual*	NONE	NONE	NONE
Sand/Dirt	scalar	Visual*	NONE	NONE	VLITE
Appearance	scalar	Visual*	NORML	NORML	NORML
Odor	scalar	Visual*	NORML	NORML	NORML
Emulsified Water	scalar	Visual*	>0.1	NEG	NEG
Free Water	scalar	Visual*		NEG	NEG

FLUID PROPERTIES	method	limit/base	current	history1	history2
Visc @ 40°C	cSt	ASTM D7279(m)	31.9	31.0	32.1

SAMPLE IMAGES	method	limit/base	current	history1	history2
---------------	--------	------------	---------	----------	----------



## GRAPHS



**Laboratory** : WearCheck - C8-1175 Appleby Line, Burlington, ON L7L 5H9 GFL Environmental - 780 - GMA - ICI - Solid Waste  
**Sample No.** : GFL0097131 **Received** : 23 Oct 2023  
**Lab Number** : 02591072 **Diagnosed** : 24 Oct 2023  
**Unique Number** : 5668151 **Diagnostician** : Wes Davis  
**Test Package** : MOB 1 ( Additional Tests: PrtCount )

To discuss this sample report, contact Customer Service at 1-800-268-2131.  
 Test denoted (\*) outside scope of accreditation, (m) method modified, (e) tested at external lab.  
 Validity of results and interpretation are based on the sample and information as supplied.

4365 boul. St-Elzear Ouest,  
 Laval, QC  
 CA H7P 4J3  
 Contact: Pieces Laval  
 pieces.laval@gflenv.com  
 T: (450)687-3838  
 F: