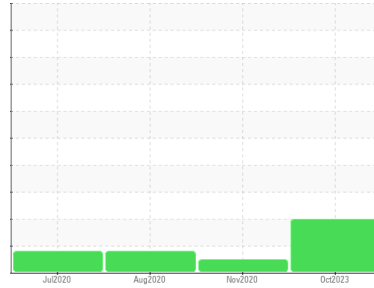




# OIL ANALYSIS REPORT

Sample Rating Trend



ISO



Machine Id  
**7213**

Component  
**Hydraulic System**

Fluid  
**PETRO CANADA HYDREX MV 32 (--- GAL)**

## DIAGNOSIS

### Recommendation

Vérifier les scelles et/ou les filters pour des points d'entrée des contaminants. Le reniflard d'air doit être réparé. S'il n'est pas classé, nous vous recommandons de le remplacer par un reniflard à air adapté au micron et / ou au dessicant. Si évalué, nous vous recommandons de réparer / remplacer le reniflard. Nous recommandons le remplacement des filtres de ce composant. Échantillonner de nouveau dans 30 à 45 jours afin de contrôler la situation.

### Wear

Les taux d'usure de tous les composants sont normaux.

### Contamination

Il y a une grande quantité de limon (particules de 4 à 14 microns) dans l'huile.

### Fluid Condition

L'huile peut encore servir si la contamination peut être réduite à un niveau acceptable.

## SAMPLE INFORMATION

	method	limit/base	current	history1	history2
Sample Number	Client Info		<b>GFL0097047</b>	PC0028072	GFL0009583
Sample Date	Client Info		<b>12 Oct 2023</b>	06 Nov 2020	21 Aug 2020
Machine Age	hrs	Client Info	<b>19540</b>	16173	15717
Oil Age	hrs	Client Info	<b>1200</b>	0	0
Oil Changed	Client Info		<b>Not Chngd</b>	Changed	Changed
Sample Status			<b>SEVERE</b>	NORMAL	ATTENTION

## WEAR METALS

	method	limit/base	current	history1	history2
Iron	ppm	ASTM D5185(m) >20	<b>2</b>	4	1
Chromium	ppm	ASTM D5185(m) >10	<b>0</b>	<1	<1
Nickel	ppm	ASTM D5185(m) >10	<b>&lt;1</b>	0	<1
Titanium	ppm	ASTM D5185(m)	<b>0</b>	0	0
Silver	ppm	ASTM D5185(m)	<b>&lt;1</b>	<1	3
Aluminum	ppm	ASTM D5185(m) >10	<b>&lt;1</b>	<1	0
Lead	ppm	ASTM D5185(m) >10	<b>0</b>	0	<1
Copper	ppm	ASTM D5185(m) >75	<b>&lt;1</b>	<1	<1
Tin	ppm	ASTM D5185(m) >10	<b>0</b>	0	0
Antimony	ppm	ASTM D5185(m)	<b>0</b>	0	<1
Vanadium	ppm	ASTM D5185(m)	<b>0</b>	0	0
Beryllium	ppm	ASTM D5185(m)	<b>0</b>	0	0
Cadmium	ppm	ASTM D5185(m)	<b>0</b>	0	0

## ADDITIVES

	method	limit/base	current	history1	history2
Boron	ppm	ASTM D5185(m) 0	<b>2</b>	2	<1
Barium	ppm	ASTM D5185(m) 0	<b>0</b>	0	0
Molybdenum	ppm	ASTM D5185(m) 0	<b>1</b>	<1	0
Manganese	ppm	ASTM D5185(m) 1	<b>0</b>	0	0
Magnesium	ppm	ASTM D5185(m) 0	<b>32</b>	1	<1
Calcium	ppm	ASTM D5185(m) 50	<b>91</b>	74	54
Phosphorus	ppm	ASTM D5185(m) 330	<b>360</b>	332	326
Zinc	ppm	ASTM D5185(m) 430	<b>451</b>	431	413
Sulfur	ppm	ASTM D5185(m) 760	<b>888</b>	1137	771
Lithium	ppm	ASTM D5185(m)	<b>&lt;1</b>	<1	<1

## CONTAMINANTS

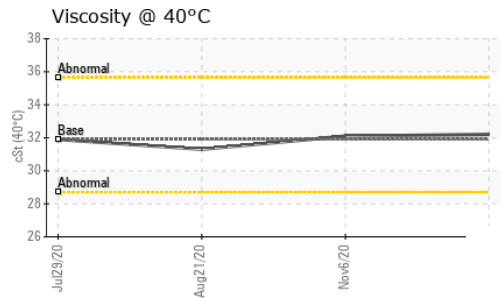
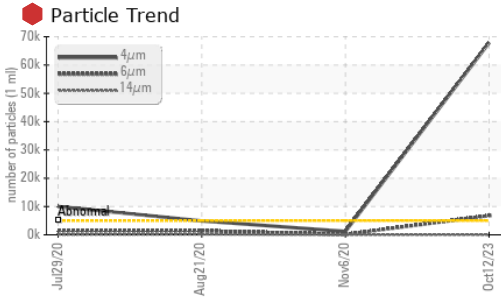
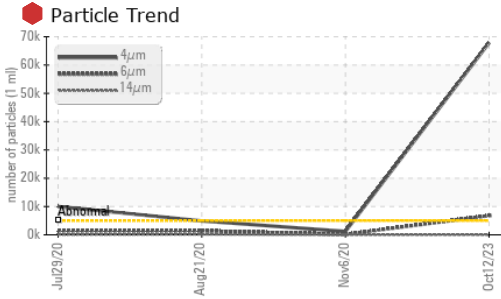
	method	limit/base	current	history1	history2
Silicon	ppm	ASTM D5185(m) >20	<b>&lt;1</b>	<1	0
Sodium	ppm	ASTM D5185(m)	<b>1</b>	<1	0
Potassium	ppm	ASTM D5185(m) >20	<b>0</b>	<1	<1

## FLUID CLEANLINESS

	method	limit/base	current	history1	history2
Particles >4µm	ASTM D7647	>5000	<b>67875</b>	1217	4909
Particles >6µm	ASTM D7647	>1300	<b>6756</b>	164	1404
Particles >14µm	ASTM D7647	>160	<b>12</b>	16	151
Particles >21µm	ASTM D7647	>40	<b>4</b>	3	60
Particles >38µm	ASTM D7647	>10	<b>2</b>	0	3
Particles >71µm	ASTM D7647	>3	<b>1</b>	0	0
Oil Cleanliness	ISO 4406 (c)	>19/17/14	<b>23/20/11</b>	17/15/11	19/18/14



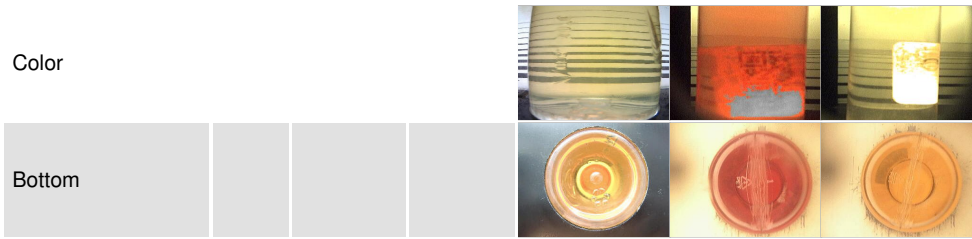
# OIL ANALYSIS REPORT



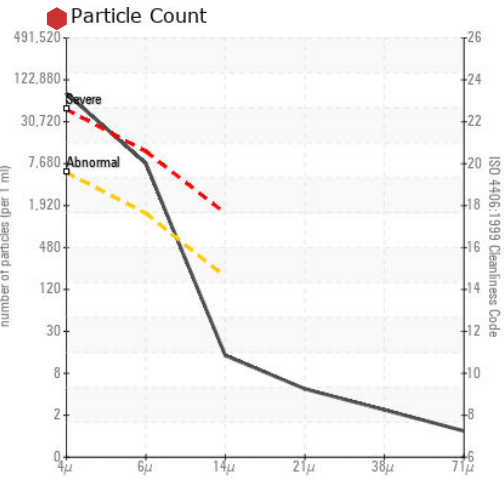
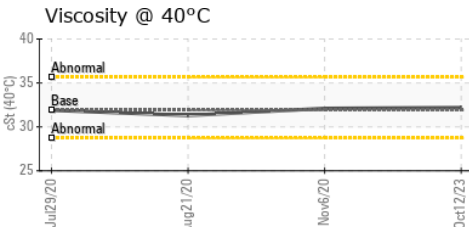
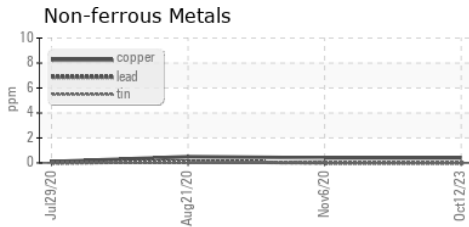
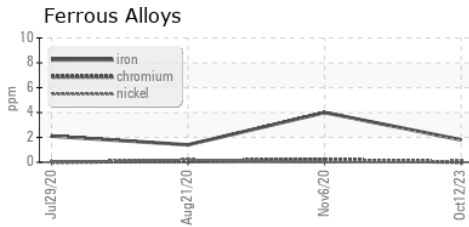
VISUAL	method	limit/base	current	history1	history2
White Metal	scalar	Visual*	NONE	NONE	NONE
Yellow Metal	scalar	Visual*	NONE	NONE	NONE
Precipitate	scalar	Visual*	NONE	NONE	NONE
Silt	scalar	Visual*	NONE	NONE	NONE
Debris	scalar	Visual*	NONE	NONE	NONE
Sand/Dirt	scalar	Visual*	NONE	NONE	NONE
Appearance	scalar	Visual*	NORML	NORML	NORML
Odor	scalar	Visual*	NORML	NORML	NORML
Emulsified Water	scalar	Visual*	>0.1	NEG	NEG
Free Water	scalar	Visual*		NEG	NEG

FLUID PROPERTIES	method	limit/base	current	history1	history2	
Visc @ 40°C	cSt	ASTM D7279(m)	31.9	<b>32.2</b>	32.1	31.3

SAMPLE IMAGES	method	limit/base	current	history1	history2
---------------	--------	------------	---------	----------	----------



## GRAPHS



**Laboratory** : WearCheck - C8-1175 Appleby Line, Burlington, ON L7L 5H9 GFL Environmental - 780 - GMA - ICI - Solid Waste  
**Sample No.** : GFL0097047 **Received** : 26 Oct 2023  
**Lab Number** : 02592150 **Diagnosed** : 30 Oct 2023  
**Unique Number** : 5669229 **Diagnostician** : Wes Davis  
**Test Package** : MOB 1 ( Additional Tests: PRTCOUNT )

To discuss this sample report, contact Customer Service at 1-800-268-2131.  
 Test denoted (\*) outside scope of accreditation, (m) method modified, (e) tested at external lab.  
 Validity of results and interpretation are based on the sample and information as supplied.

4365 boul. St-Elzear Ouest,  
 Laval, QC  
 CA H7P 4J3  
 Contact: Pieces Laval  
 pieces.laval@gflenv.com  
 T: (450)687-3838  
 F: