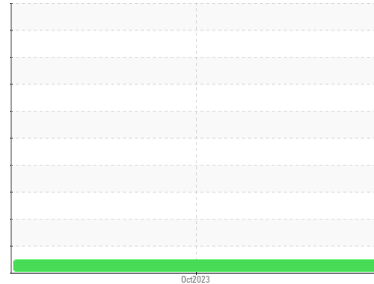


# OIL ANALYSIS REPORT

Sample Rating Trend

**NORMAL**



Machine Id  
**DR647**

Component  
**Diesel Fuel**

Fluid  
**No.2 DIESEL FUEL (ULTRALOW SULPHUR) (--- LTR)**

## DIAGNOSIS

### Recommendation

Please contact your representative for information regarding the proper sampling kits for your service.

### Corrosion

{not applicable}

### Contaminants

There is no indication of any contamination in the component(unconfirmed).

### Fuel Condition

Not enough sample submitted to determine fuel condition and/or classification.

## SAMPLE INFORMATION

method	limit/base	current	history1	history2
Sample Number	Client Info	<b>PC</b>	---	---
Sample Date	Client Info	<b>25 Oct 2023</b>	---	---
Machine Age	hrs	<b>0</b>	---	---
Sample Status		<b>NORMAL</b>	---	---

## WEAR METALS

method	limit/base	current	history1	history2	
Iron	ppm	ASTM D5185(m) >2	<b>&lt;1</b>	---	---
Chromium	ppm	ASTM D5185(m) >2	<b>0</b>	---	---
Nickel	ppm	ASTM D5185(m) >2	<b>0</b>	---	---
Titanium	ppm	ASTM D5185(m) >2	<b>0</b>	---	---
Silver	ppm	ASTM D5185(m) >2	<b>0</b>	---	---
Aluminum	ppm	ASTM D5185(m) >2	<b>0</b>	---	---
Lead	ppm	ASTM D5185(m) >2	<b>0</b>	---	---
Copper	ppm	ASTM D5185(m) >2	<b>0</b>	---	---
Tin	ppm	ASTM D5185(m) >2	<b>0</b>	---	---
Antimony	ppm	ASTM D5185(m) >2	<b>0</b>	---	---
Vanadium	ppm	ASTM D5185(m)	<b>0</b>	---	---
Beryllium	ppm	ASTM D5185(m) >2	<b>0</b>	---	---
Cadmium	ppm	ASTM D5185(m)	<b>0</b>	---	---

## ADDITIVES

method	limit/base	current	history1	history2	
Boron	ppm	ASTM D5185(m) 2	<b>4</b>	---	---
Barium	ppm	ASTM D5185(m) 2	<b>0</b>	---	---
Molybdenum	ppm	ASTM D5185(m) 2	<b>0</b>	---	---
Manganese	ppm	ASTM D5185(m)	<b>0</b>	---	---
Magnesium	ppm	ASTM D5185(m) 2	<b>0</b>	---	---
Calcium	ppm	ASTM D5185(m) 2	<b>0</b>	---	---
Phosphorus	ppm	ASTM D5185(m) 2	<b>0</b>	---	---
Zinc	ppm	ASTM D5185(m) 2	<b>&lt;1</b>	---	---
Sulfur	ppm	ASTM D5185(m) 10	<b>11</b>	---	---
Lithium	ppm	ASTM D5185(m)	<b>&lt;1</b>	---	---

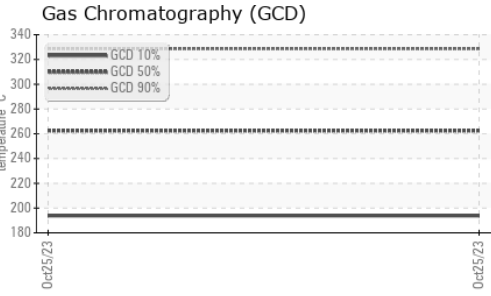
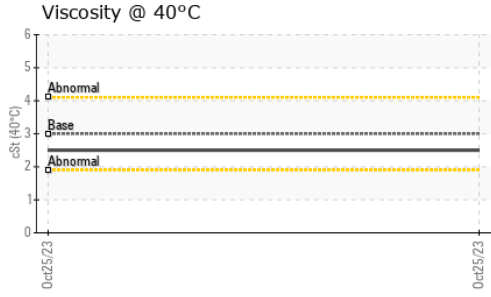
## CONTAMINANTS

method	limit/base	current	history1	history2	
Silicon	ppm	ASTM D5185(m) >10	<b>4</b>	---	---
Sodium	ppm	ASTM D5185(m) >5	<b>0</b>	---	---
Potassium	ppm	ASTM D5185(m) >20	<b>&lt;1</b>	---	---

## VISUAL

method	limit/base	current	history1	history2		
White Metal	scalar	Visual*	NONE	<b>NONE</b>	---	---
Yellow Metal	scalar	Visual*	NONE	<b>NONE</b>	---	---
Precipitate	scalar	Visual*	NONE	<b>NONE</b>	---	---
Silt	scalar	Visual*	NONE	<b>NONE</b>	---	---
Debris	scalar	Visual*	NONE	<b>VLITE</b>	---	---
Sand/Dirt	scalar	Visual*	NONE	<b>NONE</b>	---	---
Appearance	scalar	Visual*	NORML	<b>NORML</b>	---	---
Odor	scalar	Visual*	NORML	<b>NORML</b>	---	---
Emulsified Water	scalar	Visual*	>0.05	<b>NEG</b>	---	---
Free Water	scalar	Visual*		<b>NEG</b>	---	---

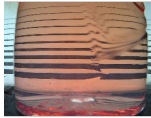

# OIL ANALYSIS REPORT



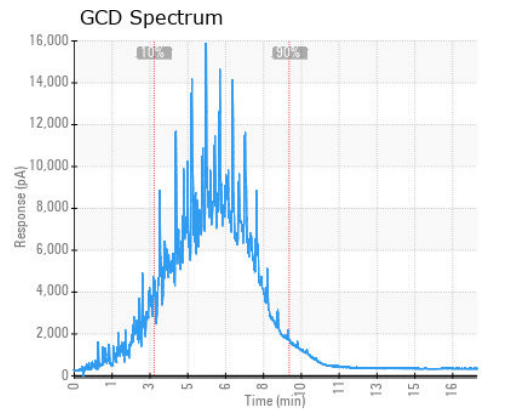
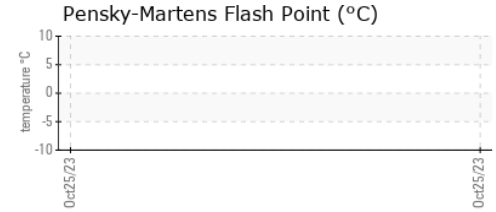
FLUID PROPERTIES		method	limit/base	current	history1	history2
Visc @ 40°C	cSt	ASTM D7279(m)	3.0	<b>2.5</b>	---	---

SIMULATED DISTILLATION (GCD)		method	limit/base	current	history1	history2
(GCD) % < 335°C	°C	ASTM D2887*		<b>91.35</b>	---	---
(GCD) Initial Boiling Point	°C	ASTM D2887*		<b>114.6</b>	---	---
(GCD) 5% Distillation Point	°C	ASTM D2887*		<b>173.4</b>	---	---
(GCD) 10% Distillation Point	°C	ASTM D2887*		<b>193.8</b>	---	---
(GCD) 20% Distillation Point	°C	ASTM D2887*		<b>216.6</b>	---	---
(GCD) 30% Distillation Point	°C	ASTM D2887*		<b>234.1</b>	---	---
(GCD) 40% Distillation Point	°C	ASTM D2887*		<b>249.1</b>	---	---
(GCD) 50% Distillation Point	°C	ASTM D2887*		<b>262.5</b>	---	---
(GCD) 60% Distillation Point	°C	ASTM D2887*		<b>276.2</b>	---	---
(GCD) 70% Distillation Point	°C	ASTM D2887*		<b>290.1</b>	---	---
(GCD) 80% Distillation Point	°C	ASTM D2887*		<b>305.9</b>	---	---
(GCD) 90% Distillation Point	°C	ASTM D2887*		<b>328.6</b>	---	---
(GCD) FBP% Distillation Point	°C	ASTM D2887*		<b>498.2</b>	---	---

## SAMPLE IMAGES

	method	limit/base	current	history1	history2
Color				no image	no image
Bottom				no image	no image

## GRAPHS



**Laboratory** : WearCheck - C8-1175 Appleby Line, Burlington, ON L7L 5H9 Green Infrastructure and Partners Inc (GPI) - 286 - Shoring & Foundations  
**Sample No.** : PC **Received** : 26 Oct 2023 151 Ram Forest Rd,  
**Lab Number** : **02592294** **Diagnosed** : 30 Oct 2023 Stouffville, ON  
**Unique Number** : 5669373 **Diagnostician** : Kevin Marson CA L4A 2G8  
**Test Package** : MOB 1 ( Additional Tests: GC-PercFuel, GCD ) Contact: Shannon Abbott  
 sabbott@gipi.com

To discuss this sample report, contact Customer Service at 1-800-268-2131.  
 Test denoted (\*) outside scope of accreditation, (m) method modified, (e) tested at external lab.  
 Validity of results and interpretation are based on the sample and information as supplied.

T: (905)750-5900  
 F: