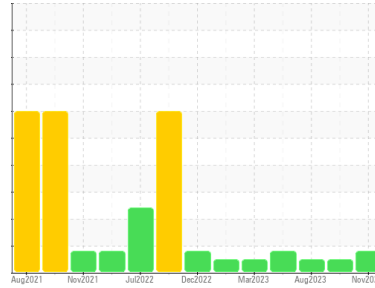




OIL ANALYSIS REPORT

Sample Rating Trend



WEAR



Machine Id
OR483
Component
Front Differential
Fluid
APRIL SUPERFLO TDH PLUS (--- GAL)

DIAGNOSIS

Recommendation

Nous vous recommandons de vidanger l'huile de ce composant si vous ne l'avez pas déjà fait. Nous vous recommandons d'échantillonner de nouveau dès que possible afin de contrôler la situation.

Wear

Nous avons noté une brusque hausse du taux de plomb. Usure de palier et (ou) de douille.

Contamination

Il n'y a aucun indice de contamination dans l'huile.

Fluid Condition

l'huile n'est plus en état de service en raison d'une usure anormale et/ou sévère.

SAMPLE INFORMATION

	method	limit/base	current	history1	history2
Sample Number	Client Info		GFL0089218	GFL0061622	GFL0061632
Sample Date	Client Info		11 Nov 2023	27 Sep 2023	08 Aug 2023
Machine Age	hrs	Client Info	11770	11453	11178
Oil Age	hrs	Client Info	0	0	0
Oil Changed	Client Info		N/A	N/A	N/A
Sample Status			ABNORMAL	NORMAL	NORMAL

CONTAMINATION

	method	limit/base	current	history1	history2
Water	WC Method	>.2	NEG	NEG	NEG

WEAR METALS

	method	limit/base	current	history1	history2
Iron	ppm	ASTM D5185(m) >420	11	2	5
Chromium	ppm	ASTM D5185(m) >4	0	0	0
Nickel	ppm	ASTM D5185(m) >4	<1	<1	0
Titanium	ppm	ASTM D5185(m)	0	0	<1
Silver	ppm	ASTM D5185(m)	<1	<1	0
Aluminum	ppm	ASTM D5185(m) >5	1	<1	<1
Lead	ppm	ASTM D5185(m) >95	▲ 143	23	70
Copper	ppm	ASTM D5185(m) >170	15	2	7
Tin	ppm	ASTM D5185(m) >15	<1	<1	<1
Antimony	ppm	ASTM D5185(m) >4	0	0	0
Vanadium	ppm	ASTM D5185(m)	0	0	0
Beryllium	ppm	ASTM D5185(m)	0	0	0
Cadmium	ppm	ASTM D5185(m)	0	0	0

ADDITIVES

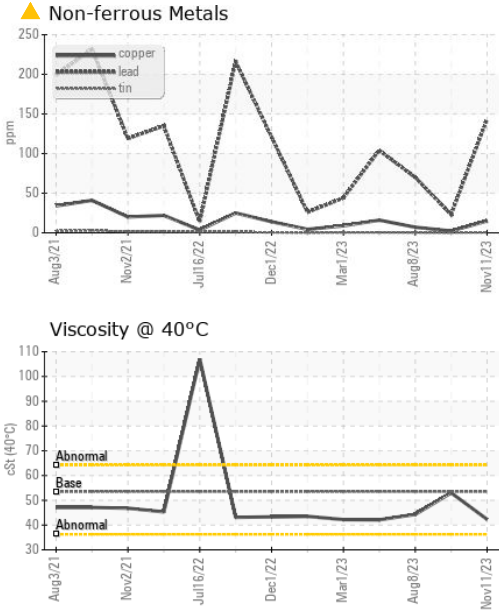
	method	limit/base	current	history1	history2
Boron	ppm	ASTM D5185(m)	6	4	4
Barium	ppm	ASTM D5185(m)	<1	<1	0
Molybdenum	ppm	ASTM D5185(m)	2	3	<1
Manganese	ppm	ASTM D5185(m)	0	0	0
Magnesium	ppm	ASTM D5185(m)	25	34	18
Calcium	ppm	ASTM D5185(m)	3304	2858	3291
Phosphorus	ppm	ASTM D5185(m)	1278	1045	1311
Zinc	ppm	ASTM D5185(m)	1245	1145	1298
Sulfur	ppm	ASTM D5185(m)	3532	3246	3771
Lithium	ppm	ASTM D5185(m)	<1	<1	<1

CONTAMINANTS

	method	limit/base	current	history1	history2
Silicon	ppm	ASTM D5185(m) >35	1	2	2
Sodium	ppm	ASTM D5185(m)	<1	1	<1
Potassium	ppm	ASTM D5185(m) >20	0	0	0



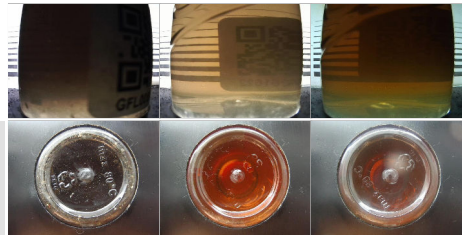
OIL ANALYSIS REPORT



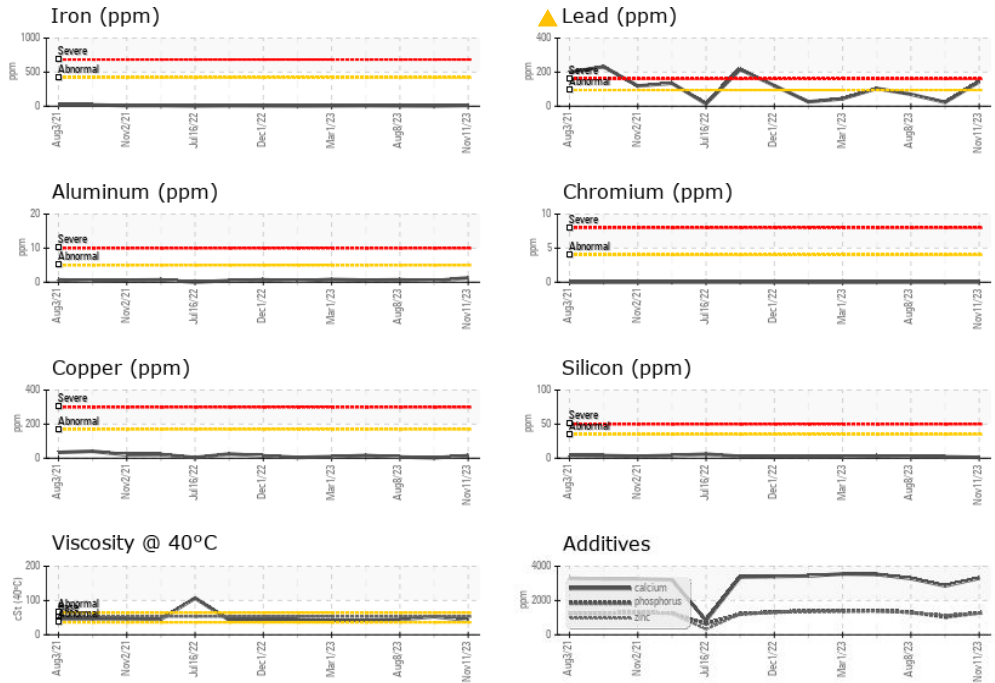
VISUAL	method	limit/base	current	history1	history2
White Metal	scalar	Visual*	NONE	NONE	NONE
Yellow Metal	scalar	Visual*	NONE	NONE	NONE
Precipitate	scalar	Visual*	NONE	NONE	NONE
Silt	scalar	Visual*	NONE	NONE	VLITE
Debris	scalar	Visual*	NONE	LIGHT	VLITE
Sand/Dirt	scalar	Visual*	NONE	NONE	NONE
Appearance	scalar	Visual*	NORML	NORML	NORML
Odor	scalar	Visual*	NORML	NORML	NORML
Emulsified Water	scalar	Visual*	>.2	NEG	NEG
Free Water	scalar	Visual*		NEG	NEG

FLUID PROPERTIES	method	limit/base	current	history1	history2
Visc @ 40°C	cSt	ASTM D7279(m)	53.5	42.3	53.0

SAMPLE IMAGES	method	limit/base	current	history1	history2
Color					
Bottom					



GRAPHS



Laboratory : WearCheck - C8-1175 Appleby Line, Burlington, ON L7L 5H9 GFL Environmental - 784 - Saint-Hyacinthe
Sample No. : GFL0089218 **Received** : 15 Nov 2023
Lab Number : 02596618 **Diagnosed** : 15 Nov 2023
Unique Number : 5681698 **Diagnostician** : Kevin Marson
Test Package : MOB 1

To discuss this sample report, contact Customer Service at 1-800-268-2131.
 Test denoted (*) outside scope of accreditation, (m) method modified, (e) tested at external lab.
 Validity of results and interpretation are based on the sample and information as supplied.

3525 Boul. Laurier Est.,
 Saint-Hyacinthe, QC
 CA J2R 2B2
 Contact: Nadine Authier
 nauthier@matrec.ca
 T: (450)773-9689
 F: