



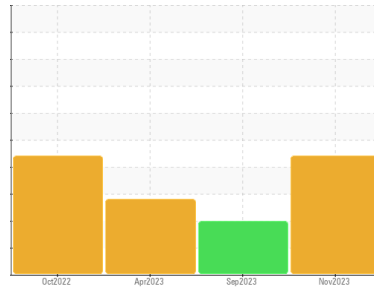
OIL ANALYSIS REPORT

Sample Rating Trend

ISO



Machine Id
711014
Component
Hydraulic System
Fluid
PETRO CANADA HYDREX MV 32 (--- GAL)



DIAGNOSIS

Recommendation

Nous vous recommandons de vérifier tous les endroits par lesquels des contaminants peuvent pénétrer dans le système. Nous vous recommandons de remplacer le filtre et d'utiliser un système de filtrage hors-ligne afin d'améliorer la propreté du fluide. Le reniflard d'air doit être réparé. S'il n'est pas classé, nous vous recommandons de le remplacer par un reniflard à air adapté au micron et / ou au dessicant. Si évalué, nous vous recommandons de réparer / remplacer le reniflard. Échantillonner de nouveau dans 30 à 45 jours afin de contrôler la situation.

Wear

Les taux d'usure de tous les composants sont normaux.

Contamination

Il y a une quantité élevée de matières particulaires (2 à 100 µm de taille) présente dans l'huile.

Fluid Condition

l'huile peut encore servir si la contamination peut être réduite à un niveau acceptable.

SAMPLE INFORMATION

	method	limit/base	current	history1	history2
Sample Number	Client Info		GFL0097080	GFL0088893	GFL0073377
Sample Date	Client Info		21 Nov 2023	26 Sep 2023	11 Apr 2023
Machine Age	kms	Client Info	103906	4966	4059
Oil Age	kms	Client Info	0	1200	1200
Oil Changed	Client Info		Not Changed	Not Changd	Not Changed
Sample Status			SEVERE	SEVERE	SEVERE

WEAR METALS

	method	limit/base	current	history1	history2
Iron	ppm	ASTM D5185(m) >50	12	10	15
Chromium	ppm	ASTM D5185(m) >10	<1	<1	1
Nickel	ppm	ASTM D5185(m) >4	0	<1	0
Titanium	ppm	ASTM D5185(m)	0	0	<1
Silver	ppm	ASTM D5185(m)	<1	<1	0
Aluminum	ppm	ASTM D5185(m) >5	2	2	2
Lead	ppm	ASTM D5185(m) >4	0	2	0
Copper	ppm	ASTM D5185(m) >15	1	1	2
Tin	ppm	ASTM D5185(m) >4	0	0	0
Antimony	ppm	ASTM D5185(m)	0	0	0
Vanadium	ppm	ASTM D5185(m)	0	0	0
Beryllium	ppm	ASTM D5185(m)	0	0	0
Cadmium	ppm	ASTM D5185(m)	0	0	0

ADDITIVES

	method	limit/base	current	history1	history2
Boron	ppm	ASTM D5185(m) 0	<1	<1	<1
Barium	ppm	ASTM D5185(m) 0	<1	<1	0
Molybdenum	ppm	ASTM D5185(m) 0	0	0	0
Manganese	ppm	ASTM D5185(m) 1	0	0	<1
Magnesium	ppm	ASTM D5185(m) 0	2	2	3
Calcium	ppm	ASTM D5185(m) 50	57	58	58
Phosphorus	ppm	ASTM D5185(m) 330	321	329	342
Zinc	ppm	ASTM D5185(m) 430	417	416	385
Sulfur	ppm	ASTM D5185(m) 760	745	768	779
Lithium	ppm	ASTM D5185(m)	<1	<1	<1

CONTAMINANTS

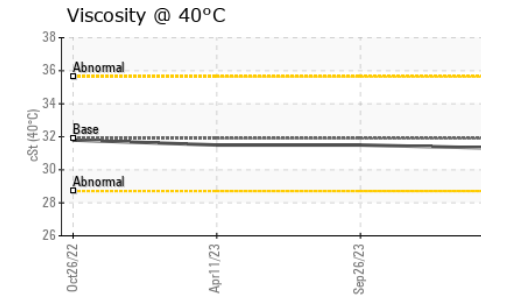
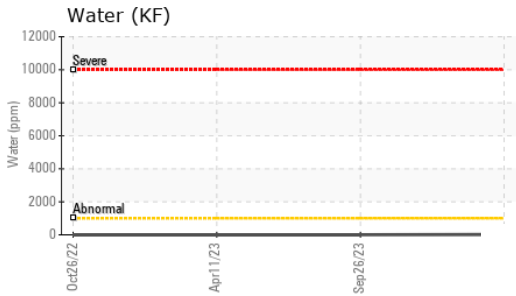
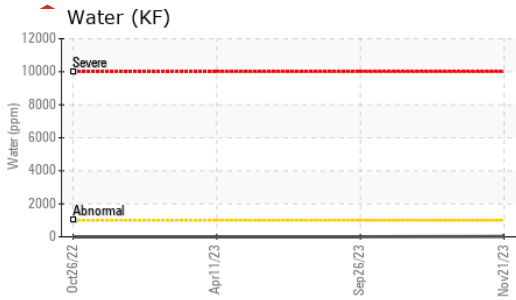
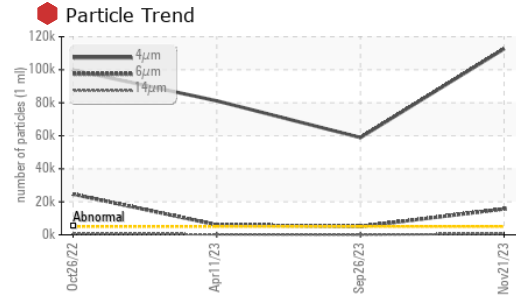
	method	limit/base	current	history1	history2
Silicon	ppm	ASTM D5185(m) >15	5	4	6
Sodium	ppm	ASTM D5185(m)	11	11	24
Potassium	ppm	ASTM D5185(m) >20	2	1	2
Water	%	ASTM D6304* >0.1	0.002	---	---
ppm Water	ppm	ASTM D6304* >1000	18	---	---

FLUID CLEANLINESS

	method	limit/base	current	history1	history2
Particles >4µm	ASTM D7647	>5000	112660	58904	81148
Particles >6µm	ASTM D7647	>1300	15675	5048	6051
Particles >14µm	ASTM D7647	>160	630	50	255
Particles >21µm	ASTM D7647	>40	142	8	58
Particles >38µm	ASTM D7647	>10	8	1	1
Particles >71µm	ASTM D7647	>3	1	1	0
Oil Cleanliness	ISO 4406 (c)	>19/17/14	24/21/16	23/20/13	24/20/15



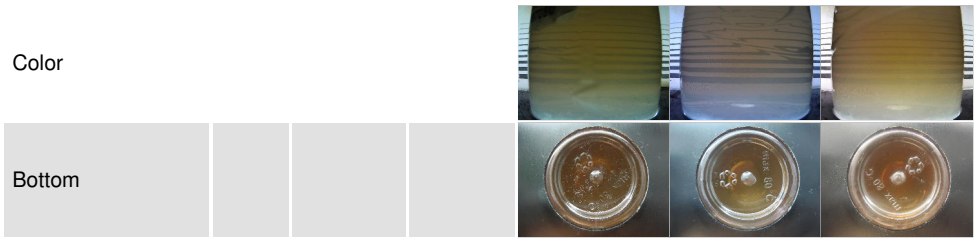
OIL ANALYSIS REPORT



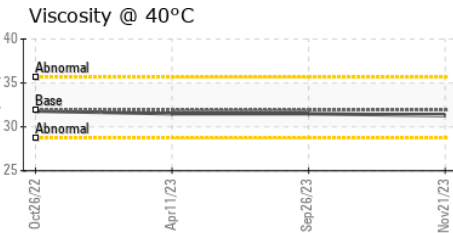
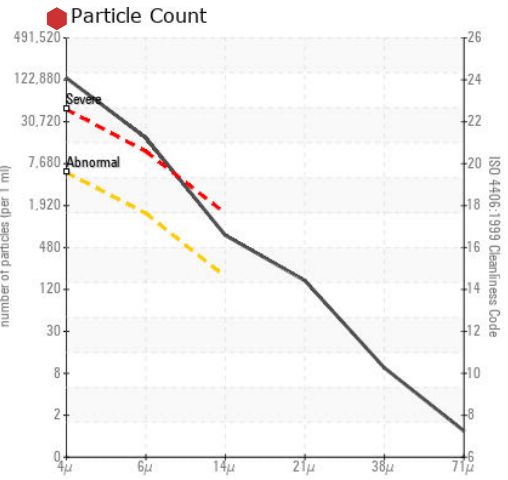
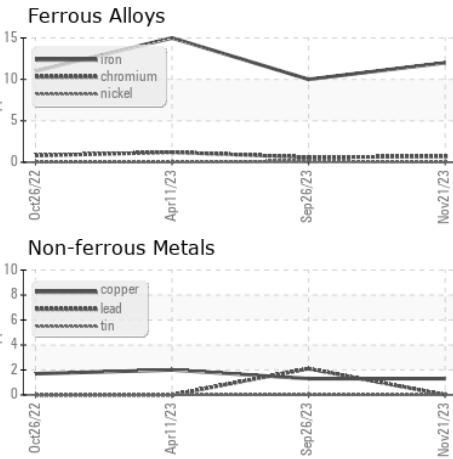
VISUAL	method	limit/base	current	history1	history2
White Metal	scalar	Visual*	NONE	NONE	NONE
Yellow Metal	scalar	Visual*	NONE	NONE	NONE
Precipitate	scalar	Visual*	NONE	NONE	NONE
Silt	scalar	Visual*	NONE	NONE	NONE
Debris	scalar	Visual*	NONE	NONE	NONE
Sand/Dirt	scalar	Visual*	NONE	NONE	NONE
Appearance	scalar	Visual*	NORML	NORML	NORML
Odor	scalar	Visual*	NORML	NORML	NORML
Emulsified Water	scalar	Visual*	>0.1	.5%	NEG
Free Water	scalar	Visual*		NEG	NEG

FLUID PROPERTIES	method	limit/base	current	history1	history2
Visc @ 40°C	cSt	ASTM D7279(m)	31.9	31.3	31.5

SAMPLE IMAGES	method	limit/base	current	history1	history2
---------------	--------	------------	---------	----------	----------



GRAPHS



Laboratory : WearCheck - C8-1175 Appleby Line, Burlington, ON L7L 5H9 GFL Environmental - 780 - GMA - ICI - Solid Waste
Sample No. : GFL0097080 **Received** : 24 Nov 2023
Lab Number : 02598852 **Diagnosed** : 27 Nov 2023
Unique Number : 5683932 **Diagnostician** : Wes Davis
Test Package : MOB 1 (Additional Tests: KF, PrtCount)

To discuss this sample report, contact Customer Service at 1-800-268-2131.
 Test denoted (*) outside scope of accreditation, (m) method modified, (e) tested at external lab.
 Validity of results and interpretation are based on the sample and information as supplied.

4365 boul. St-Elzear Ouest,
 Laval, QC
 CA H7P 4J3
 Contact: Pieces Laval
 pieces.laval@gflenv.com
 T: (450)687-3838
 F: