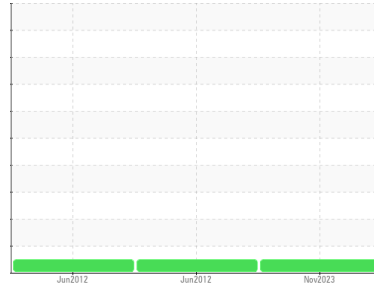


FUEL REPORT

Sample Rating Trend



NORMAL



Machine Id
Life Boat - #4

Component
Diesel Fuel
Fluid

No.2 DIESEL FUEL (HIGH-SULPHUR) (--- LTR)

DIAGNOSIS

Recommendation

Resample at the next service interval to monitor.

Corrosion

{not applicable}

Contaminants

The water content is negligible. The system and fluid cleanliness is acceptable.

Fuel Condition

The condition of fuel is suitable for further service. All laboratory tests indicate that this sample meets specifications for No.2 diesel fuel, high sulfur (CGSB-3.6-M90 Type B).

SAMPLE INFORMATION		method	limit/base	current	history1	history2
Sample Number	Client Info			PC	PC	PC
Sample Date	Client Info			26 Nov 2023	04 Jun 2012	03 Jun 2012
Machine Age	hrs	Client Info		0	0	0
Sample Status				NORMAL	NORMAL	NORMAL

PHYSICAL PROPERTIES		method	limit/base	current	history1	history2
Specific Gravity		ASTM D1298*	0.839	0.865	0.851	0.851
Fuel Color	text	Visual Screen*	Yellow	Green	Orang	Orang
Visc @ 40°C	cSt	ASTM D7279(m)	3.0	3.1	3.5	3.4
Pensky-Martens Flash Point	°C	ASTM D7215*	52	65.2	69	69

SULFUR CONTENT		method	limit/base	current	history1	history2
Sulfur	ppm	ASTM D5185(m)	500	576	1384	1391

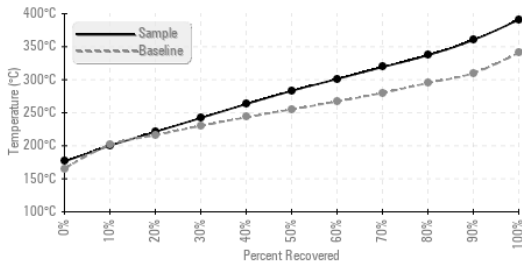
DISTILLATION		method	limit/base	current	history1	history2
Initial Boiling Point	°C	ASTM D2887*	165	176	46	182
5% Distillation Point	°C	ASTM D2887*		190	---	---
10% Distill Point	°C	ASTM D2887*	201	200	215	216
15% Distillation Point	°C	ASTM D2887*		210	---	---
20% Distill Point	°C	ASTM D2887*	216	221	234	234
30% Distill Point	°C	ASTM D2887*	230	242	251	251
40% Distill Point	°C	ASTM D2887*	243	263	267	266
50% Distill Point	°C	ASTM D2887*	255	283	281	281
60% Distill Point	°C	ASTM D2887*	267	301	297	297
70% Distill Point	°C	ASTM D2887*	280	319	314	313
80% Distill Point	°C	ASTM D2887*	295	337	331	331
85% Distillation Point	°C	ASTM D2887*		348	---	---
90% Distill Point	°C	ASTM D2887*	310	360	353	353
95% Distillation Point	°C	ASTM D2887*		377	---	---
Final Boiling Point	°C	ASTM D2887*	341	391	373	371
Distillation Residue	%	ASTM D86(e)*	3.0	---	1.7	1.9
Distillation Loss	%	ASTM D86(e)*	3.0	---	0.0	0.0

IGNITION QUALITY		method	limit/base	current	history1	history2
API Gravity		ASTM D1298*	37.7	32	34.8	34.8
Cetane Index		ASTM D4737*	<40.0	43	52.5	52.5

CONTAMINANTS		method	limit/base	current	history1	history2
Silicon	ppm	ASTM D5185(m)	<1.0	0	0	0
Sodium	ppm	ASTM D5185(m)	<0.1	<1	<1	0
Potassium	ppm	ASTM D5185(m)	<0.1	0	0	0
Water	%	ASTM D6304*	<0.05	0.003	0.036	0.004
ppm Water	ppm	ASTM D6304*	<500	39	364.7	49.5

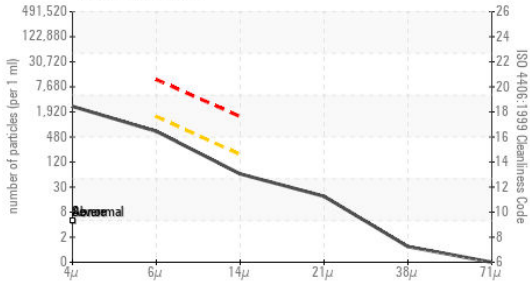
FUEL REPORT

Fuel Distillation Curve



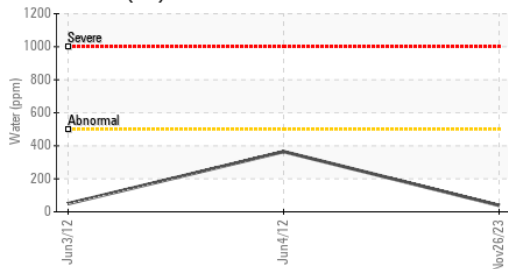
FLUID CLEANLINESS	method	limit/base	current	history1	history2
Particles >4µm	ASTM D7647		2286	---	---
Particles >6µm	ASTM D7647	>1300	576	---	---
Particles >14µm	ASTM D7647	>160	55	---	---
Particles >21µm	ASTM D7647	>40	16	---	---
Particles >38µm	ASTM D7647	>10	1	---	---
Particles >71µm	ASTM D7647	>3	0	---	---
Oil Cleanliness	ISO 4406 (c)	>--/17/14	18/16/13	---	---

Particle Count



HEAVY METALS	method	limit/base	current	history1	history2
Aluminum	ppm	ASTM D5185(m)	<0.1	0	0
Nickel	ppm	ASTM D5185(m)	<0.1	0	0
Lead	ppm	ASTM D5185(m)	<0.1	0	0
Vanadium	ppm	ASTM D5185(m)	<0.1	0	0
Iron	ppm	ASTM D5185(m)	<0.1	<1	0
Calcium	ppm	ASTM D5185(m)	<0.1	0	0
Magnesium	ppm	ASTM D5185(m)	<0.1	0	<1
Phosphorus	ppm	ASTM D5185(m)	<0.1	0	0
Zinc	ppm	ASTM D5185(m)	<0.1	0	<1

Water (KF)



SAMPLE IMAGES	method	limit/base	current	history1	history2
---------------	--------	------------	---------	----------	----------

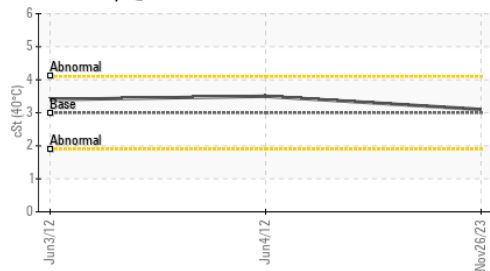
Color



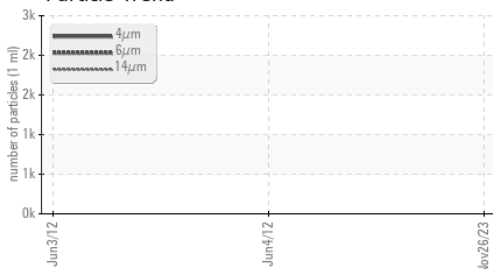
Bottom



Viscosity @ 40°C



Particle Trend



ISO 17025:2017
Accredited
Laboratory

Laboratory : WearCheck - C8-1175 Appleby Line, Burlington, ON L7L 5H9
Sample No. : PC
Lab Number : 02599148
Unique Number : 5684228
Test Package : FUEL (Additional Tests: CC Flash, GC-PercFuel, PrtCount)

Received : 27 Nov 2023
Diagnosed : 29 Nov 2023
Diagnostician : Kevin Marson

Suncor - Terra Nova Projects
 Scotia Centre, 235 Water Street
 St. John's, NL
 CA A1C 1B6
 Contact: Josh Hynes
 joshhynes@suncor.com
 T: (709)778-3575
 F: (709)724-2835

To discuss this sample report, contact Customer Service at 1-800-268-2131.
 Test denoted (*) outside scope of accreditation, (m) method modified, (e) tested at external lab.
 Validity of results and interpretation are based on the sample and information as supplied.