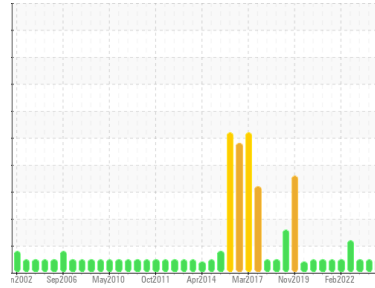


Machine Id
PRESS #10 (S/N MP-48309)

Component
Hydraulic System

Fluid
PETRO CANADA HYDREX AW 68 (2000 GAL)



DIAGNOSIS

Recommendation

Resample at the next service interval to monitor. Please contact your representative for information regarding the proper sampling kits for your service. NOTE: We recommend using Advanced Oil Monitoring (AOM) kits for this system. The AOM test package includes advanced level testing to determine the suitability of turbine and large industrial compressor oils for continued use.

Wear

Component wear rates appear to be normal (unconfirmed).

Contamination

The system cleanliness is acceptable for your target ISO 4406 cleanliness code. The system and fluid cleanliness is acceptable.

Fluid Condition

The AN level is acceptable for this fluid. The condition of the oil is acceptable for the time in service (unconfirmed).

SAMPLE INFORMATION		method	limit/base	current	history1	history2
Sample Number	Client Info			PC0062176	PC0062181	PC0062179
Sample Date	Client Info			30 Nov 2023	02 Jun 2023	03 Nov 2022
Machine Age	yrs	Client Info		0	0	0
Oil Age	yrs	Client Info		0	0	0
Oil Changed	Client Info			N/A	N/A	N/A
Sample Status				NORMAL	NORMAL	NORMAL

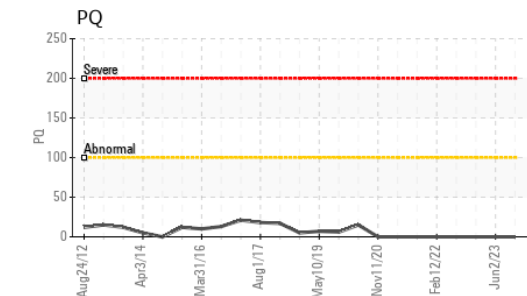
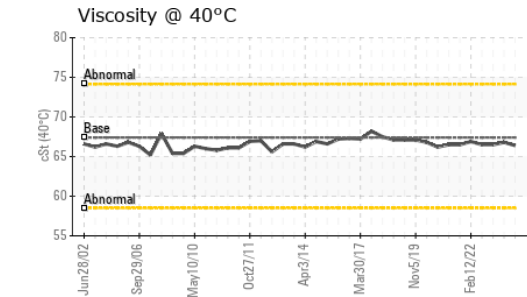
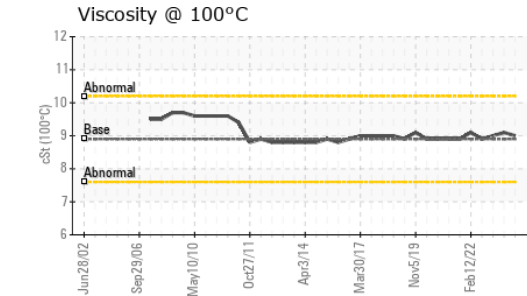
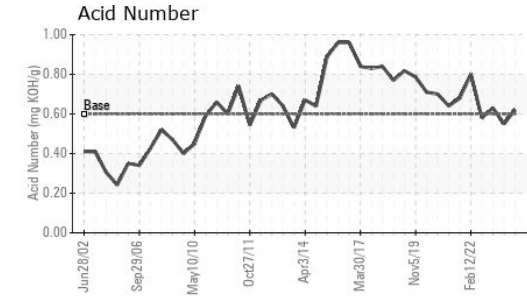
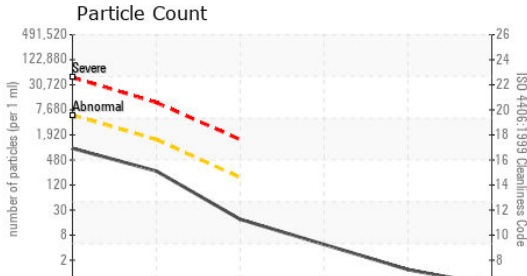
CONTAMINATION		method	limit/base	current	history1	history2
Water	WC Method		>0.05	NEG	NEG	NEG

WEAR METALS		method	limit/base	current	history1	history2
PQ		ASTM D8184*		0	0	0
Iron	ppm	ASTM D5185(m)	>20	45	40	40
Chromium	ppm	ASTM D5185(m)	>20	<1	<1	<1
Nickel	ppm	ASTM D5185(m)	>20	<1	<1	<1
Titanium	ppm	ASTM D5185(m)		0	0	0
Silver	ppm	ASTM D5185(m)		<1	0	0
Aluminum	ppm	ASTM D5185(m)	>20	8	8	8
Lead	ppm	ASTM D5185(m)	>20	8	7	8
Copper	ppm	ASTM D5185(m)	>20	77	71	71
Tin	ppm	ASTM D5185(m)	>20	1	1	1
Antimony	ppm	ASTM D5185(m)		0	<1	<1
Vanadium	ppm	ASTM D5185(m)		0	0	0
Beryllium	ppm	ASTM D5185(m)		0	0	0
Cadmium	ppm	ASTM D5185(m)		0	0	0

ADDITIVES		method	limit/base	current	history1	history2
Boron	ppm	ASTM D5185(m)	0	<1	<1	<1
Barium	ppm	ASTM D5185(m)	0	<1	<1	<1
Molybdenum	ppm	ASTM D5185(m)	0	0	0	0
Manganese	ppm	ASTM D5185(m)	0	<1	1	1
Magnesium	ppm	ASTM D5185(m)	0	67	69	66
Calcium	ppm	ASTM D5185(m)	50	106	109	110
Phosphorus	ppm	ASTM D5185(m)	330	577	611	613
Zinc	ppm	ASTM D5185(m)	430	547	538	549
Sulfur	ppm	ASTM D5185(m)	760	1848	1864	1928
Lithium	ppm	ASTM D5185(m)		<1	<1	<1

CONTAMINANTS		method	limit/base	current	history1	history2
Silicon	ppm	ASTM D5185(m)	>15	3	3	2
Sodium	ppm	ASTM D5185(m)		3	3	3
Potassium	ppm	ASTM D5185(m)	>20	<1	<1	0

OIL ANALYSIS REPORT



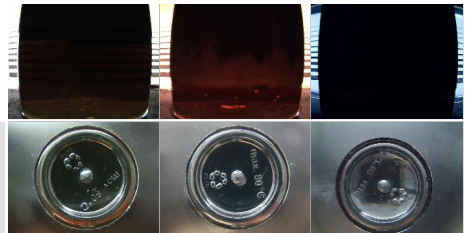
FLUID CLEANLINESS					
method	limit/base	current	history1	history2	
Particles >4µm	ASTM D7647 >5000	802	2931	892	
Particles >6µm	ASTM D7647 >1300	229	1013	219	
Particles >14µm	ASTM D7647 >160	16	112	15	
Particles >21µm	ASTM D7647 >40	4	34	4	
Particles >38µm	ASTM D7647 >10	1	2	1	
Particles >71µm	ASTM D7647 >3	0	1	0	
Oil Cleanliness	ISO 4406 (c) >19/17/14	17/15/11	19/17/14	17/15/11	

FLUID DEGRADATION					
method	limit/base	current	history1	history2	
Acid Number (AN)	mg KOH/g ASTM D974*	0.60	0.62	0.55	0.63

VISUAL						
method	limit/base	current	history1	history2		
White Metal	scalar Visual*	NONE	NONE	NONE	NONE	
Yellow Metal	scalar Visual*	NONE	NONE	NONE	NONE	
Precipitate	scalar Visual*	NONE	NONE	NONE	NONE	
Silt	scalar Visual*	NONE	NONE	NONE	NONE	
Debris	scalar Visual*	NONE	NONE	NONE	NONE	
Sand/Dirt	scalar Visual*	NONE	NONE	NONE	NONE	
Appearance	scalar Visual*	NORML	NORML	NORML	NORML	
Odor	scalar Visual*	NORML	NORML	NORML	NORML	
Emulsified Water	scalar Visual*	>0.05	NEG	NEG	NEG	
Free Water	scalar Visual*		NEG	NEG	NEG	

FLUID PROPERTIES						
method	limit/base	current	history1	history2		
Visc @ 40°C	cSt ASTM D7279(m)	67.4	66.4	66.8	66.5	
Visc @ 100°C	cSt ASTM D7279(m)	8.9	9	9.1	9	
Viscosity Index (VI)	Scale ASTM D2270*	105	110	111	110	

SAMPLE IMAGES						
method	limit/base	current	history1	history2		
Color						
Bottom						



Laboratory : WearCheck - C8-1175 Appleby Line, Burlington, ON L7L 5H9
Sample No. : PC0062176 **Received** : 04 Dec 2023
Lab Number : **02600532** **Diagnosed** : 05 Dec 2023
Unique Number : 5685612 **Diagnostician** : Kevin Marson
Test Package : IND 2 (Additional Tests: KV100, PQ, VI)

EXTRUDEX ALUMINIUM
 411 CHRISLEA ROAD
 WOODBRIDGE, ON
 CA L4L 8N4
 Contact: Daljeet Munday
 dmunday@extrudex.com
 T: (416)745-4444
 F: (416)745-0925

To discuss this sample report, contact Customer Service at 1-800-268-2131.
 Test denoted (*) outside scope of accreditation, (m) method modified, (e) tested at external lab.
 Validity of results and interpretation are based on the sample and information as supplied.