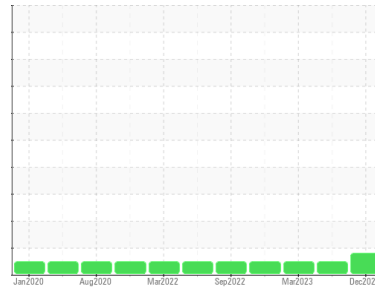




OIL ANALYSIS REPORT

Sample Rating Trend



WEAR



Machine Id
4659
 Component
Transmission (Auto)
 Fluid
ATF (PAO) (--- GAL)

DIAGNOSIS

Recommendation

Nous vous recommandons de vidanger le fluide de ce composant si vous ne l'avez pas déjà fait. Nous vous recommandons d'échantillonner de nouveau dès que possible afin de contrôler la situation.

Wear

Le bas indice ferreux (PQ) indique que l'usure ferreuse est due à de la corrosion.

Contamination

Il n'y a aucun indice de contamination dans le fluide.

Fluid Condition

le fluide n'est plus en état de service en raison d'une usure anormale et/ou sévère.

SAMPLE INFORMATION

	method	limit/base	current	history1	history2
Sample Number	Client Info		GFL0097426	GFL0089660	GFL0078328
Sample Date	Client Info		04 Dec 2023	21 Aug 2023	29 Mar 2023
Machine Age	hrs	Client Info	19675	19089	18476
Oil Age	hrs	Client Info	19089	18476	6000
Oil Changed	Client Info		N/A	N/A	N/A
Sample Status			ABNORMAL	NORMAL	NORMAL

CONTAMINATION

	method	limit/base	current	history1	history2
Water	WC Method	>0.1	NEG	NEG	NEG

WEAR METALS

	method	limit/base	current	history1	history2
PQ	ASTM D8184*	>50	14	---	---
Iron	ppm	ASTM D5185(m) >160	▲ 162	137	110
Chromium	ppm	ASTM D5185(m) >5	<1	<1	<1
Nickel	ppm	ASTM D5185(m) >5	<1	0	0
Titanium	ppm	ASTM D5185(m)	0	<1	<1
Silver	ppm	ASTM D5185(m) >5	<1	<1	0
Aluminum	ppm	ASTM D5185(m) >50	45	43	40
Lead	ppm	ASTM D5185(m) >50	22	22	22
Copper	ppm	ASTM D5185(m) >225	38	27	28
Tin	ppm	ASTM D5185(m) >10	8	8	7
Antimony	ppm	ASTM D5185(m)	0	0	0
Vanadium	ppm	ASTM D5185(m)	0	0	0
Beryllium	ppm	ASTM D5185(m)	0	0	0
Cadmium	ppm	ASTM D5185(m)	0	0	0

ADDITIVES

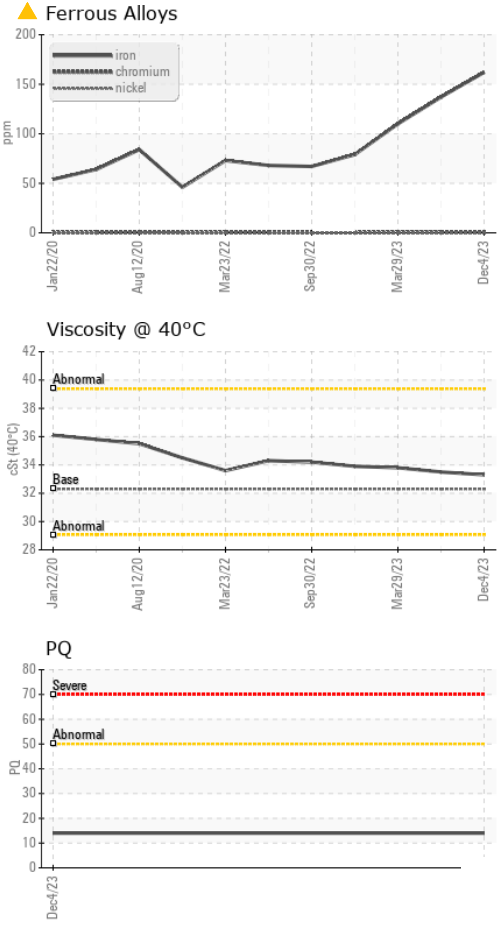
	method	limit/base	current	history1	history2
Boron	ppm	ASTM D5185(m) 175	75	77	85
Barium	ppm	ASTM D5185(m) 5	0	0	0
Molybdenum	ppm	ASTM D5185(m) 5	0	0	0
Manganese	ppm	ASTM D5185(m)	1	1	1
Magnesium	ppm	ASTM D5185(m) 5	4	1	<1
Calcium	ppm	ASTM D5185(m) 125	53	46	49
Phosphorus	ppm	ASTM D5185(m) 290	234	248	260
Zinc	ppm	ASTM D5185(m) 10	29	10	7
Sulfur	ppm	ASTM D5185(m) 400	469	389	410
Lithium	ppm	ASTM D5185(m)	<1	<1	<1

CONTAMINANTS

	method	limit/base	current	history1	history2
Silicon	ppm	ASTM D5185(m) >20	17	15	15
Sodium	ppm	ASTM D5185(m)	42	42	43
Potassium	ppm	ASTM D5185(m) >20	<1	2	1



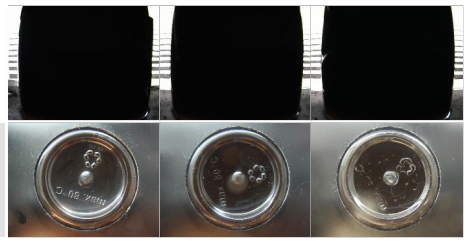
OIL ANALYSIS REPORT



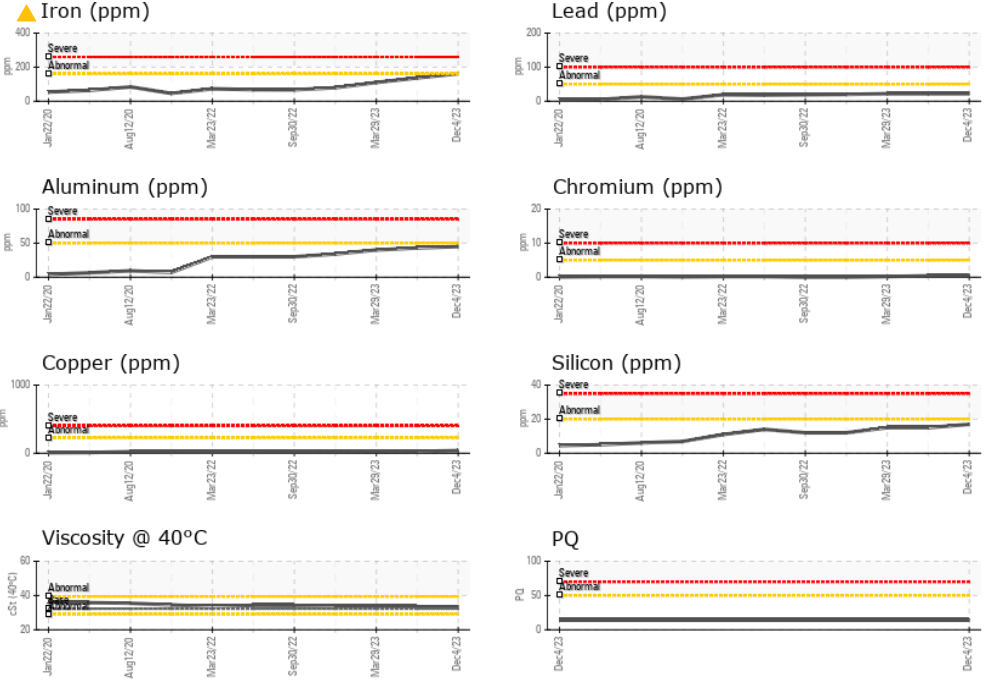
VISUAL	method	limit/base	current	history1	history2
White Metal	scalar	Visual*	NONE	NONE	NONE
Yellow Metal	scalar	Visual*	NONE	NONE	NONE
Precipitate	scalar	Visual*	NONE	NONE	NONE
Silt	scalar	Visual*	NONE	NONE	NONE
Debris	scalar	Visual*	NONE	NONE	NONE
Sand/Dirt	scalar	Visual*	NONE	NONE	NONE
Appearance	scalar	Visual*	NORML	NORML	NORML
Odor	scalar	Visual*	NORML	NORML	NORML
Emulsified Water	scalar	Visual*	>0.1	NEG	NEG
Free Water	scalar	Visual*		NEG	NEG

FLUID PROPERTIES	method	limit/base	current	history1	history2
Visc @ 40°C	cSt	ASTM D7279(m)	32.3	33.3	33.5

SAMPLE IMAGES	method	limit/base	current	history1	history2
Color					
Bottom					



GRAPHS



Laboratory : WearCheck - C8-1175 Appleby Line, Burlington, ON L7L 5H9 GFL Environmental - 732 - Beauce - Hauling - Solid Waste
Sample No. : GFL0097426 **Received** : 08 Dec 2023
Lab Number : 02601912 **Diagnosed** : 11 Dec 2023
Unique Number : 5694997 **Diagnostician** : Kevin Marson
Test Package : MOB 1 (Additional Tests: PQ)

To discuss this sample report, contact Customer Service at 1-800-268-2131.
 Test denoted (*) outside scope of accreditation, (m) method modified, (e) tested at external lab.
 Validity of results and interpretation are based on the sample and information as supplied.

Contact: Denis Bedard
 T: (418)774-5275
 F: