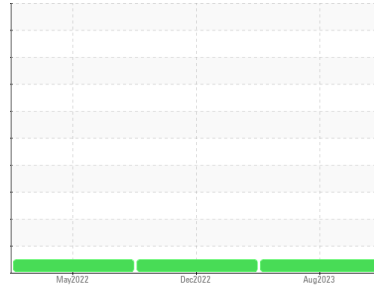


OIL ANALYSIS REPORT

Sample Rating Trend

NORMAL



Machine Id
CAL017 (S/N 3626-2)

Component
Refrigeration Compressor

Fluid
PETRO CANADA REFLO 68A AMMONIA OIL (--- GAL)

DIAGNOSIS

Recommendation

Resample at the next service interval to monitor.
NOTE: Please provide information regarding reservoir capacity, filter type and micron rating with next sample. (Customer Sample Comment: Warning! Ammonia!)

Wear

All component wear rates are normal.

Contamination

There is no indication of any contamination in the oil.

Fluid Condition

The condition of the oil is acceptable for the time in service.

SAMPLE INFORMATION

	method	limit/base	current	history1	history2
Sample Number	Client Info		PC0010698	PC0023781	PC0052809
Sample Date	Client Info		09 Aug 2023	03 Dec 2022	17 May 2022
Machine Age	hrs	Client Info	11477	10383	8015
Oil Age	hrs	Client Info	11477	0	8015
Oil Changed	Client Info		N/A	N/A	Not Changd
Sample Status			NORMAL	NORMAL	NORMAL

CONTAMINATION

	method	limit/base	current	history1	history2
Water	WC Method	>0.1	NEG	NEG	NEG

WEAR METALS

	method	limit/base	current	history1	history2
Iron	ppm	ASTM D5185(m) >50	9	10	7
Chromium	ppm	ASTM D5185(m) >10	0	0	0
Nickel	ppm	ASTM D5185(m)	<1	0	0
Titanium	ppm	ASTM D5185(m)	0	0	0
Silver	ppm	ASTM D5185(m)	<1	0	0
Aluminum	ppm	ASTM D5185(m) >25	<1	<1	<1
Lead	ppm	ASTM D5185(m) >25	0	0	<1
Copper	ppm	ASTM D5185(m) >50	<1	<1	<1
Tin	ppm	ASTM D5185(m) >15	0	0	<1
Antimony	ppm	ASTM D5185(m)	0	0	0
Vanadium	ppm	ASTM D5185(m)	0	0	0
Beryllium	ppm	ASTM D5185(m)	0	0	0
Cadmium	ppm	ASTM D5185(m)	0	0	0

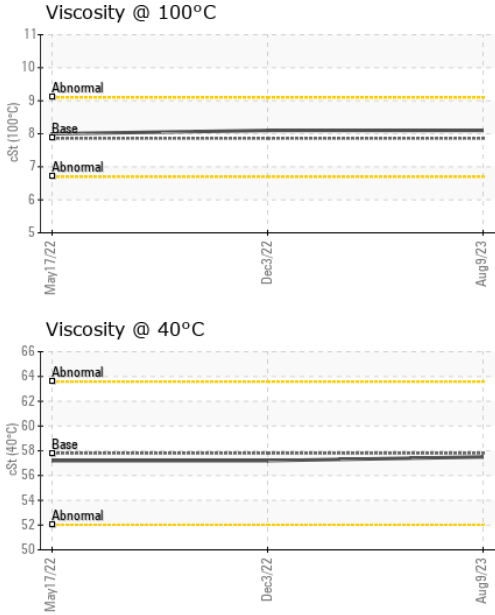
ADDITIVES

	method	limit/base	current	history1	history2
Boron	ppm	ASTM D5185(m) 0	<1	<1	<1
Barium	ppm	ASTM D5185(m) 0	<1	0	0
Molybdenum	ppm	ASTM D5185(m) 0	0	0	0
Manganese	ppm	ASTM D5185(m)	0	0	<1
Magnesium	ppm	ASTM D5185(m) 0	0	0	<1
Calcium	ppm	ASTM D5185(m) 0	2	<1	2
Phosphorus	ppm	ASTM D5185(m) 0	2	2	4
Zinc	ppm	ASTM D5185(m) 0	3	2	3
Sulfur	ppm	ASTM D5185(m) 0	22	22	36
Lithium	ppm	ASTM D5185(m)	<1	<1	<1

CONTAMINANTS

	method	limit/base	current	history1	history2
Silicon	ppm	ASTM D5185(m) >25	9	4	10
Sodium	ppm	ASTM D5185(m)	<1	0	<1
Potassium	ppm	ASTM D5185(m) >20	0	<1	<1

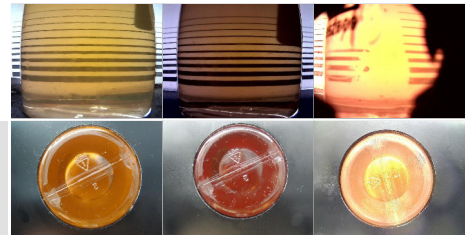
OIL ANALYSIS REPORT



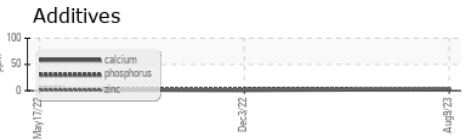
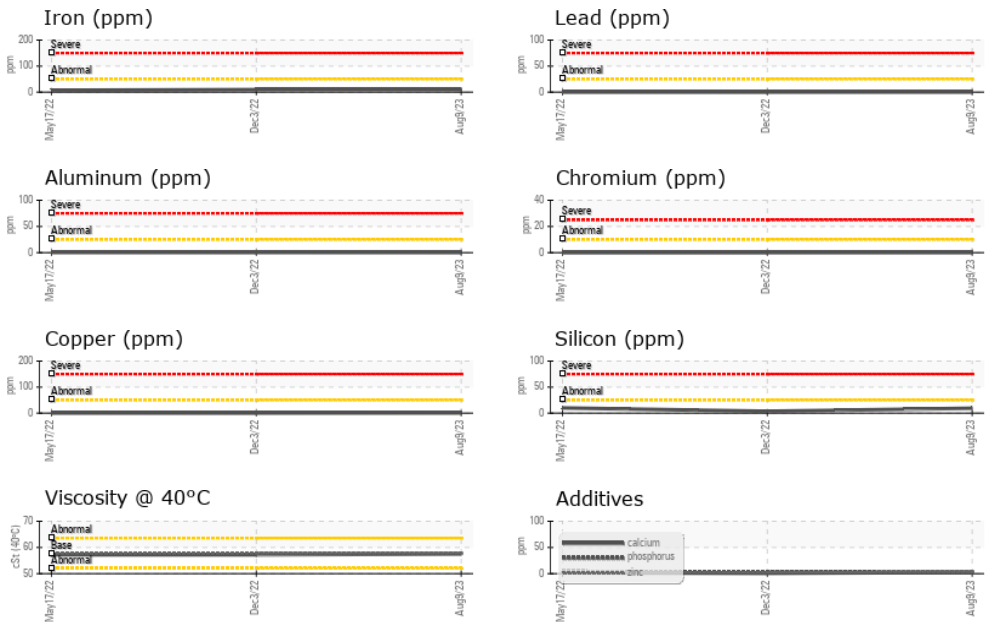
VISUAL	method	limit/base	current	history1	history2
White Metal	scalar	Visual*	NONE	NONE	NONE
Yellow Metal	scalar	Visual*	NONE	NONE	NONE
Precipitate	scalar	Visual*	NONE	NONE	NONE
Silt	scalar	Visual*	NONE	NONE	NONE
Debris	scalar	Visual*	NONE	NONE	NONE
Sand/Dirt	scalar	Visual*	NONE	NONE	NONE
Appearance	scalar	Visual*	NORML	NORML	NORML
Odor	scalar	Visual*	NORML	NORML	NORML
Emulsified Water	scalar	Visual*	>0.1	NEG	NEG
Free Water	scalar	Visual*		NEG	NEG

FLUID PROPERTIES	method	limit/base	current	history1	history2	
Visc @ 40°C	cSt	ASTM D7279(m)	57.8	57.5	57.2	57.2
Visc @ 100°C	cSt	ASTM D7279(m)	7.86	8.1	8.1	8
Viscosity Index (VI)	Scale	ASTM D2270*	101	108	109	106

SAMPLE IMAGES	method	limit/base	current	history1	history2
Color					
Bottom					



GRAPHS



Laboratory : WearCheck - C8-1175 Appleby Line, Burlington, ON L7L 5H9 Ocean Choice International - MV Calvert
Sample No. : PC0010698 **Received** : 18 Dec 2023
Lab Number : 02603838 **Diagnosed** : 18 Dec 2023
Unique Number : 5696923 **Diagnostician** : Kevin Marson
Test Package : MOB 1 (Additional Tests: KV100, VI)

1315 Topsail Rd, P.O. Box 8190
 St. John's, NL
 CA A1B 3N4
 Contact: Calvert Engine Control Room
 calvertengine@oceanchoice.com

To discuss this sample report, contact Customer Service at 1-800-268-2131.
 Test denoted (*) outside scope of accreditation, (m) method modified, (e) tested at external lab.
 Validity of results and interpretation are based on the sample and information as supplied.

T:
F: