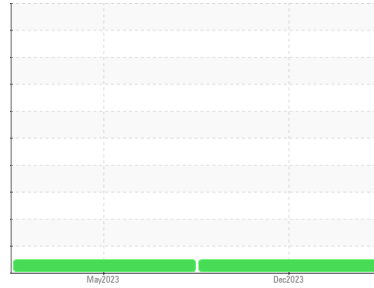


OIL ANALYSIS REPORT

Sample Rating Trend

NORMAL



Area
PROPULSION EQUIPMENT
Machine Id
BRUNVOLL BOWTHRUSTER (CAL006) (S/N 11395)
Component
Gear Unit
Fluid
MOBIL MOBILGEAR 600 XP ISO 68 (60 LTR)

DIAGNOSIS

Recommendation

Resample at the next service interval to monitor.

Wear

All component wear rates are normal.

Contamination

There is no indication of any contamination in the oil.

Fluid Condition

The condition of the oil is acceptable for the time in service.

SAMPLE INFORMATION		method	limit/base	current	history1	history2
Sample Number	Client Info			PC0010697	PC0011655	---
Sample Date	Client Info			17 Dec 2023	10 May 2023	---
Machine Age	hrs	Client Info		0	0	---
Oil Age	hrs	Client Info		0	0	---
Oil Changed	Client Info			N/A	N/A	---
Sample Status				NORMAL	NORMAL	---

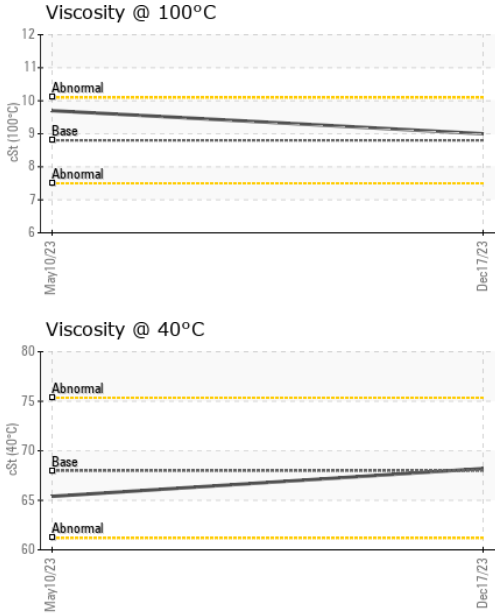
CONTAMINATION		method	limit/base	current	history1	history2
Water	WC Method		>0.2	NEG	NEG	---

WEAR METALS		method	limit/base	current	history1	history2
Iron	ppm	ASTM D5185(m)	>125	12	3	---
Chromium	ppm	ASTM D5185(m)	>5	0	0	---
Nickel	ppm	ASTM D5185(m)	>10	<1	0	---
Titanium	ppm	ASTM D5185(m)		<1	4	---
Silver	ppm	ASTM D5185(m)		<1	0	---
Aluminum	ppm	ASTM D5185(m)	>30	<1	<1	---
Lead	ppm	ASTM D5185(m)	>5	<1	<1	---
Copper	ppm	ASTM D5185(m)	>100	2	<1	---
Tin	ppm	ASTM D5185(m)	>5	0	0	---
Antimony	ppm	ASTM D5185(m)	>5	0	<1	---
Vanadium	ppm	ASTM D5185(m)		0	0	---
Beryllium	ppm	ASTM D5185(m)		0	0	---
Cadmium	ppm	ASTM D5185(m)		0	0	---

ADDITIVES		method	limit/base	current	history1	history2
Boron	ppm	ASTM D5185(m)		5	4	---
Barium	ppm	ASTM D5185(m)		<1	0	---
Molybdenum	ppm	ASTM D5185(m)		0	0	---
Manganese	ppm	ASTM D5185(m)		0	0	---
Magnesium	ppm	ASTM D5185(m)		0	0	---
Calcium	ppm	ASTM D5185(m)		2	0	---
Phosphorus	ppm	ASTM D5185(m)		370	587	---
Zinc	ppm	ASTM D5185(m)		20	10	---
Sulfur	ppm	ASTM D5185(m)		7943	5094	---
Lithium	ppm	ASTM D5185(m)		<1	<1	---

CONTAMINANTS		method	limit/base	current	history1	history2
Silicon	ppm	ASTM D5185(m)	>50	<1	3	---
Sodium	ppm	ASTM D5185(m)		<1	<1	---
Potassium	ppm	ASTM D5185(m)	>20	0	0	---

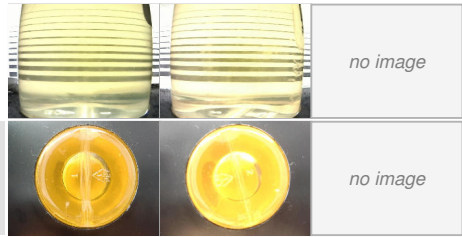
OIL ANALYSIS REPORT



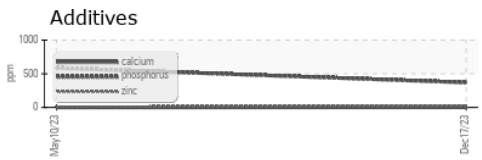
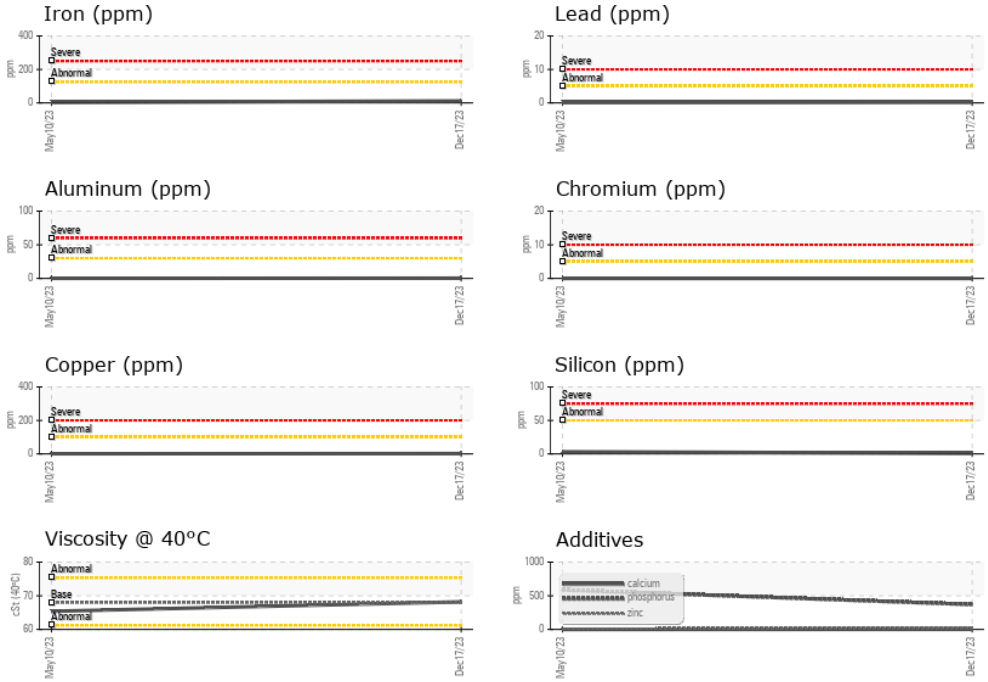
VISUAL	method	limit/base	current	history1	history2
White Metal	scalar	Visual*	NONE	NONE	---
Yellow Metal	scalar	Visual*	NONE	NONE	---
Precipitate	scalar	Visual*	NONE	NONE	---
Silt	scalar	Visual*	NONE	NONE	---
Debris	scalar	Visual*	NONE	NONE	---
Sand/Dirt	scalar	Visual*	NONE	NONE	---
Appearance	scalar	Visual*	NORML	NORML	---
Odor	scalar	Visual*	NORML	NORML	---
Emulsified Water	scalar	Visual*	>0.2	NEG	---
Free Water	scalar	Visual*		NEG	---

FLUID PROPERTIES	method	limit/base	current	history1	history2
Visc @ 40°C	cSt	ASTM D7279(m)	68	68.2	65.4
Visc @ 100°C	cSt	ASTM D7279(m)	8.8	9	9.7
Viscosity Index (VI)	Scale	ASTM D2270*	101	106	130

SAMPLE IMAGES	method	limit/base	current	history1	history2
Color					
Bottom					



GRAPHS



Laboratory : WearCheck - C8-1175 Appleby Line, Burlington, ON L7L 5H9 **Ocean Choice International - MV Calvert**
Sample No. : PC0010697 **Recieved** : 18 Dec 2023 1315 Topsail Rd, P.O. Box 8190
Lab Number : 02603889 **Diagnosed** : 19 Dec 2023 St. John's, NL
Unique Number : 5696974 **Diagnostician** : Wes Davis CA A1B 3N4
Test Package : MOB 1 (Additional Tests: KV100, VI)

To discuss this sample report, contact Customer Service at 1-800-268-2131. T:
 Test denoted (*) outside scope of accreditation, (m) method modified, (e) tested at external lab. F:
 Validity of results and interpretation are based on the sample and information as supplied.