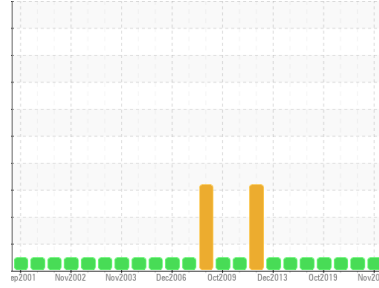


Area
Fwd Machinery Space [450219424]
 Machine Id
Emergency Air Compressor - Compressor Oil (S/N Sample Tag KB-63207-S2)
 Component
Compressor
 Fluid
COMPRO 100 (1 LTR)



DIAGNOSIS

Recommendation
 Resample at the next service interval to monitor.

Wear
 All component wear rates are normal.

Contamination
 The water content is negligible. There is no indication of any contamination in the oil.

Fluid Condition
 The AN level is acceptable for this fluid. The condition of the oil is suitable for further service.

SAMPLE INFORMATION method limit/base current history1 history2

Sample Number	Client Info	PC	PC	PC
Sample Date	Client Info	24 Nov 2023	27 Sep 2021	05 Oct 2020
Machine Age	hrs Client Info	0	0	0
Oil Age	hrs Client Info	0	0	0
Oil Changed	Client Info	N/A	N/A	N/A
Sample Status		NORMAL	NORMAL	NORMAL

WEAR METALS method limit/base current history1 history2

PQ	ASTM D8184*		0	0	0
Iron	ppm ASTM D5185(m)	>50	6	1	2
Chromium	ppm ASTM D5185(m)	>5	0	0	0
Nickel	ppm ASTM D5185(m)		<1	0	0
Titanium	ppm ASTM D5185(m)		0	0	0
Silver	ppm ASTM D5185(m)		0	0	0
Aluminum	ppm ASTM D5185(m)	>15	2	<1	<1
Lead	ppm ASTM D5185(m)	>65	<1	<1	0
Copper	ppm ASTM D5185(m)	>65	<1	<1	<1
Tin	ppm ASTM D5185(m)	>10	0	<1	0
Antimony	ppm ASTM D5185(m)		0	0	<1
Vanadium	ppm ASTM D5185(m)		0	0	0
Beryllium	ppm ASTM D5185(m)		0	0	0
Cadmium	ppm ASTM D5185(m)		0	0	0

ADDITIVES method limit/base current history1 history2

Boron	ppm ASTM D5185(m)	0	0	<1	<1
Barium	ppm ASTM D5185(m)	0	0	0	0
Molybdenum	ppm ASTM D5185(m)	0	0	0	0
Manganese	ppm ASTM D5185(m)		0	0	0
Magnesium	ppm ASTM D5185(m)	0	<1	0	<1
Calcium	ppm ASTM D5185(m)	0	<1	5	<1
Phosphorus	ppm ASTM D5185(m)	50	15	13	12
Zinc	ppm ASTM D5185(m)	0	1	2	<1
Sulfur	ppm ASTM D5185(m)	1500	2946	2847	3123
Lithium	ppm ASTM D5185(m)		<1	<1	<1

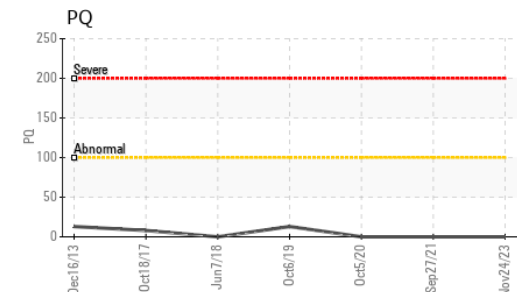
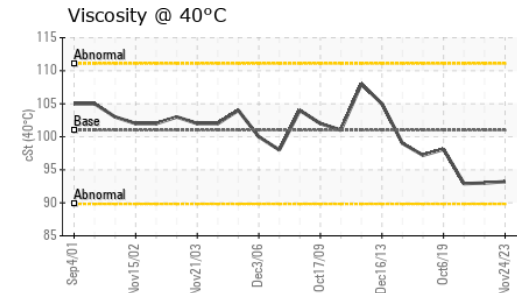
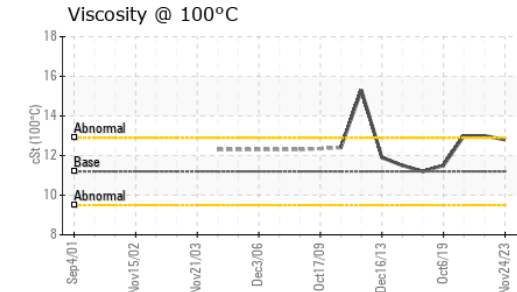
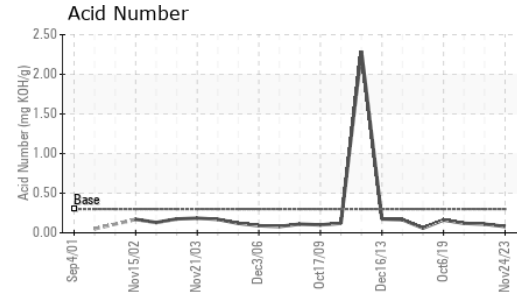
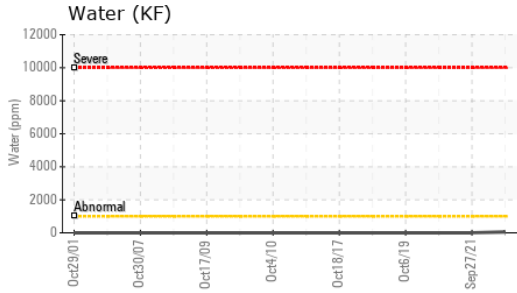
CONTAMINANTS method limit/base current history1 history2

Silicon	ppm ASTM D5185(m)	>35	0	<1	0
Sodium	ppm ASTM D5185(m)		0	<1	0
Potassium	ppm ASTM D5185(m)	>20	<1	<1	<1
Water	% ASTM D6304*	>0.1	0.005	---	---
ppm Water	ppm ASTM D6304*	>1000	51	---	---

INFRA-RED method limit/base current history1 history2

Soot %	% ASTM D7844*		0	---	---
Nitration	Abs/cm ASTM D7624*		2.4	---	---
Sulfation	Abs/.1mm ASTM D7415*		27.8	---	---

OIL ANALYSIS REPORT

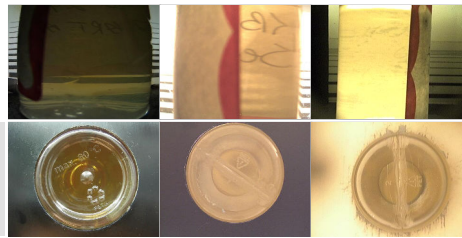


FLUID DEGRADATION		method	limit/base	current	history1	history2
Oxidation	Abs./1mm	ASTM D7414*		25.1	---	---
Acid Number (AN)	mg KOH/g	ASTM D974*	0.3	0.08	0.11	0.12
Base Number (BN)	mg KOH/g	ASTM D2896*		0.43	---	---

VISUAL		method	limit/base	current	history1	history2
White Metal	scalar	Visual*	NONE	NONE	NONE	NONE
Yellow Metal	scalar	Visual*	NONE	NONE	NONE	NONE
Precipitate	scalar	Visual*	NONE	NONE	NONE	NONE
Silt	scalar	Visual*	NONE	NONE	NONE	NONE
Debris	scalar	Visual*	NONE	NONE	VLITE	NONE
Sand/Dirt	scalar	Visual*	NONE	NONE	NONE	NONE
Appearance	scalar	Visual*	NORML	NORML	NORML	NORML
Odor	scalar	Visual*	NORML	NORML	NORML	NORML
Emulsified Water	scalar	Visual*	>0.1	NEG	NEG	NEG
Free Water	scalar	Visual*		NEG	NEG	NEG

FLUID PROPERTIES		method	limit/base	current	history1	history2
Visc @ 40°C	cSt	ASTM D7279(m)	101.0	93.2	93.0	92.9
Visc @ 100°C	cSt	ASTM D7279(m)	11.2	12.8	13.0	13
Viscosity Index (VI)	Scale	ASTM D2270*	97	134	137	138

SAMPLE IMAGES		method	limit/base	current	history1	history2
Color						
Bottom						



Laboratory : WearCheck - C8-1175 Appleby Line, Burlington, ON L7L 5H9
Sample No. : PC
Lab Number : **02605561** **Received** : 28 Dec 2023
Unique Number : 5698646 **Diagnosed** : 05 Jan 2024
Test Package : MAR 2 (Additional Tests: FT-IR, KF, KV100, TBN, VI) **Diagnostician** : Kevin Marson

Suncor - Terra Nova Projects
 Scotia Centre, 235 Water Strret
 St. John's, NL
 CA A1C 1B6
 Contact: Josh Hynes
 joshynes@suncor.com
 T: (709)778-3575
 F: (709)724-2835

To discuss this sample report, contact Customer Service at 1-800-268-2131.
 Test denoted (*) outside scope of accreditation, (m) method modified, (e) tested at external lab.
 Validity of results and interpretation are based on the sample and information as supplied.