

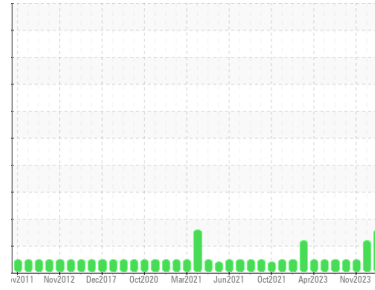
FUEL REPORT

Sample Rating Trend

ISO



Area
[450234527]
Machine Id
TB-62203 EMG
Component
Diesel Fuel
Fluid
MARINE DIESEL DMA (--- GAL)



DIAGNOSIS

Recommendation
Laboratory test indicate that this fuel is suitable for use and meets all test requirements. We advise that you filter this fluid before use. We recommend you service the filters on this component. Resample at the next service interval to monitor.

Corrosion
(not applicable)

Contaminants
There is a light amount of silt (particulates < 14 microns in size) present in the fuel. The water content is negligible.

Fuel Condition
The fuel is still serviceable provided that the contaminant(s) can be reduced to acceptable levels.

SAMPLE INFORMATION

method	limit/base	current	history1	history2
Sample Number	Client Info	PC0076267	PC0052484	PC
Sample Date	Client Info	08 Dec 2023	12 Nov 2023	06 Nov 2023
Machine Age	hrs	0	0	0
Sample Status		ATTENTION	ABNORMAL	NORMAL

PHYSICAL PROPERTIES

method	limit/base	current	history1	history2		
Specific Gravity	ASTM D1298*	0.869	0.847	0.846	0.847	
Fuel Color	text	Visual Screen*	Clear	Pink	Yellow	Orang
Visc @ 40°C	cSt	ASTM D7279(m)	5.74	2.9	3.1	2.9
Pensky-Martens Flash Point	°C	ASTM D7215*	73.0	63.4	62.7	62.7

SULFUR CONTENT

method	limit/base	current	history1	history2		
Sulfur	ppm	ASTM D5185(m)	730	122	130	115

DISTILLATION

method	limit/base	current	history1	history2		
Initial Boiling Point	°C	ASTM D2887*	171	175	174	174
5% Distillation Point	°C	ASTM D2887*		200	199	198
10% Distill Point	°C	ASTM D2887*	214	211	210	210
15% Distillation Point	°C	ASTM D2887*		220	219	219
20% Distill Point	°C	ASTM D2887*		229	228	227
30% Distill Point	°C	ASTM D2887*		245	243	243
40% Distill Point	°C	ASTM D2887*		258	257	255
50% Distill Point	°C	ASTM D2887*	323	272	270	268
60% Distill Point	°C	ASTM D2887*		287	285	282
70% Distill Point	°C	ASTM D2887*		301	300	295
80% Distill Point	°C	ASTM D2887*		318	318	311
85% Distillation Point	°C	ASTM D2887*		331	331	322
90% Distill Point	°C	ASTM D2887*	398	344	345	334
95% Distillation Point	°C	ASTM D2887*		366	370	353
Final Boiling Point	°C	ASTM D2887*	415	387	396	383

IGNITION QUALITY

method	limit/base	current	history1	history2	
API Gravity	ASTM D1298*		35	35	35
Cetane Index	ASTM D4737*	<40.0	48	48	47

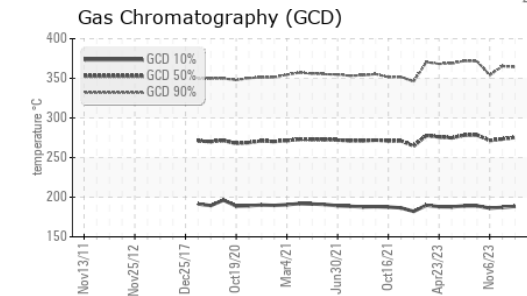
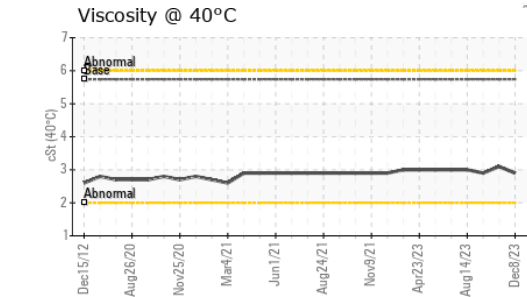
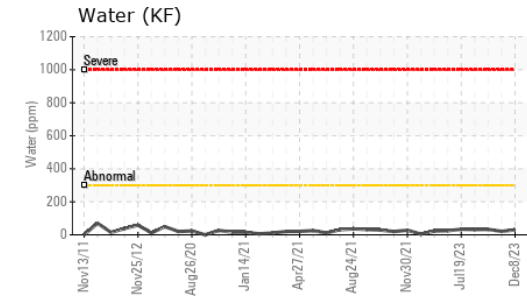
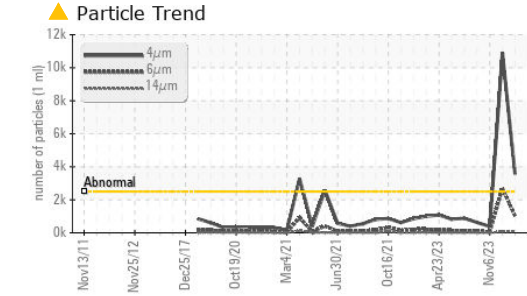
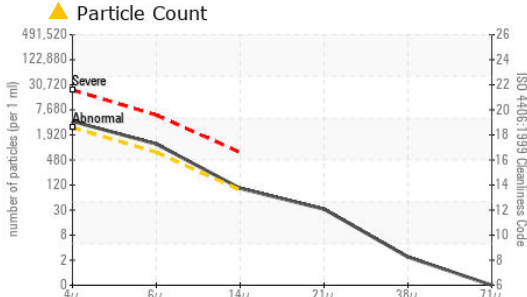
CONTAMINANTS

method	limit/base	current	history1	history2		
Silicon	ppm	ASTM D5185(m)	<1.0	0	0	0
Sodium	ppm	ASTM D5185(m)	<0.1	<1	0	0
Potassium	ppm	ASTM D5185(m)	<0.1	0	<1	<1
Water	%	ASTM D6304*	<0.05	0.003	0.002	0.003
ppm Water	ppm	ASTM D6304*	<500	30	21	33

FLUID CLEANLINESS

method	limit/base	current	history1	history2	
Particles >4µm	ASTM D7647	>2500	▲ 3565	▲ 10890	376
Particles >6µm	ASTM D7647	>640	▲ 1016	▲ 2695	57
Particles >14µm	ASTM D7647	>80	▲ 88	62	3
Particles >21µm	ASTM D7647	>20	28	7	1
Particles >38µm	ASTM D7647	>4	2	0	0
Particles >71µm	ASTM D7647	>3	0	0	0
Oil Cleanliness	ISO 4406 (c)	>18/16/13	▲ 19/17/14	▲ 21/19/13	16/13/9

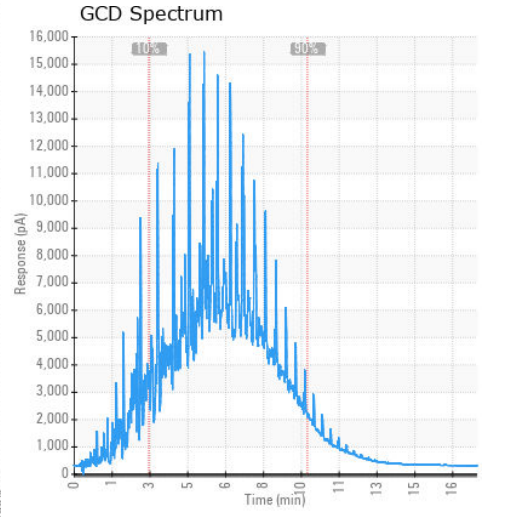
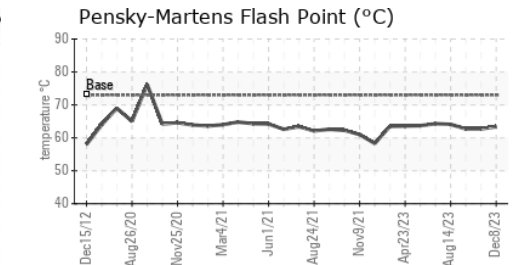
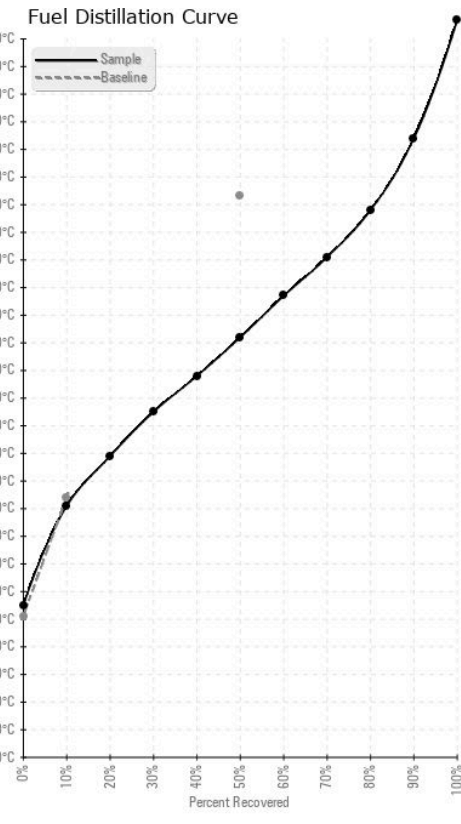
FUEL REPORT



HEAVY METALS		method	limit/base	current	history1	history2
Aluminum	ppm	ASTM D5185(m)	<0.1	0	0	0
Nickel	ppm	ASTM D5185(m)	<0.1	0	0	0
Lead	ppm	ASTM D5185(m)	<0.1	0	0	0
Vanadium	ppm	ASTM D5185(m)	<0.1	0	0	0
Iron	ppm	ASTM D5185(m)	<0.1	0	<1	<1
Calcium	ppm	ASTM D5185(m)	<0.1	0	0	0
Magnesium	ppm	ASTM D5185(m)	<0.1	0	<1	0
Phosphorus	ppm	ASTM D5185(m)	<0.1	0	<1	<1
Zinc	ppm	ASTM D5185(m)	<0.1	0	<1	0

SAMPLE IMAGES		method	limit/base	current	history1	history2
Color						
Bottom						

GRAPHS



Laboratory : WearCheck - C8-1175 Appleby Line, Burlington, ON L7L 5H9
Sample No. : PC0076267 **Received** : 28 Dec 2023
Lab Number : 02605600 **Diagnosed** : 03 Jan 2024
Unique Number : 5698685 **Diagnostician** : Kevin Marson
Test Package : FUEL (Additional Tests: CC Flash, GC-PercFuel, PrtCount)

Suncor - Terra Nova Projects
 Scotia Centre, 235 Water Street
 St. John's, NL
 CA A1C 1B6
 Contact: Josh Hynes
 joshhynes@suncor.com
 T: (709)778-3575
 F: (709)724-2835

To discuss this sample report, contact Customer Service at 1-800-268-2131.
 Test denoted (*) outside scope of accreditation, (m) method modified, (e) tested at external lab.
 Validity of results and interpretation are based on the sample and information as supplied.