

GREASE ANALYSIS

Sample Rating Trend

NORMAL

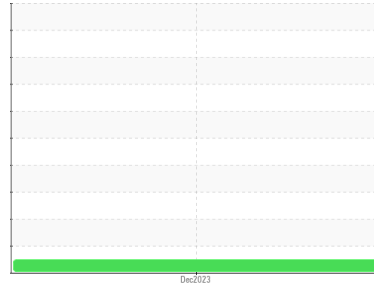


Area
[450240063]

Machine Id
TURRET BEARING UPPER DRUM

Component
Grease

Fluid
PETRO CANADA PEERLESS OG-PLUS GREASE (--- GAL)



DIAGNOSIS

Recommendation

Resample at the next service interval to monitor. The fluid was not specified, however, a fluid match indicates that this fluid is PETRO CANADA PEERLESS OG-PLUS GREASE. Please confirm.

Wear

All component wear rates are normal.

Grease Condition

The condition of the grease is acceptable for the time in service.

Contaminants

There is no indication of any contamination in the grease.

SAMPLE INFORMATION

method	limit/base	current	history1	history2
Sample Number	Client Info	PC	---	---
Sample Date	Client Info	30 Dec 2023	---	---
Machine Age	hrs Client Info	0	---	---
Grease Age	hrs Client Info	0	---	---
Grease Serviced	Client Info	N/A	---	---
Sample Status		NORMAL	---	---

CONTAMINATION

method	limit/base	current	history1	history2
Water	WC Method >0.1	NEG	---	---

WEAR METALS

method	limit/base	current	history1	history2
PQ	ASTM D8184* >200	0	---	---
Iron	ppm ASTM D5185(m) >250	1	---	---
Chromium	ppm ASTM D5185(m) >10	0	---	---
Nickel	ppm ASTM D5185(m) >5	<1	---	---
Cadmium	ppm ASTM D5185(m)	0	---	---
Titanium	ppm ASTM D5185(m)	0	---	---
Vanadium	ppm ASTM D5185(m)	0	---	---
Lead	ppm ASTM D5185(m) >25	0	---	---
Copper	ppm ASTM D5185(m) >75	0	---	---
Tin	ppm ASTM D5185(m) >5	0	---	---
Silver	ppm ASTM D5185(m) >5	0	---	---

ADDITIVES

method	limit/base	current	history1	history2
Boron	ppm ASTM D5185(m) 250	133	---	---
Magnesium	ppm ASTM D5185(m) 7	4	---	---
Manganese	ppm ASTM D5185(m) 0	0	---	---
Molybdenum	ppm ASTM D5185(m) 0	0	---	---
Phosphorus	ppm ASTM D5185(m) 0	0	---	---
Zinc	ppm ASTM D5185(m) 0	88	---	---
Antimony	ppm ASTM D5185(m)	0	---	---

THICKENER/SOAP

method	limit/base	current	history1	history2
Aluminum	ppm ASTM D5185(m) 0	2	---	---
Barium	ppm ASTM D5185(m) 0	0	---	---
Calcium	ppm ASTM D5185(m) 5500	4179	---	---
Sodium	ppm ASTM D5185(m) 0	1	---	---
Lithium	ppm ASTM D5185(m) 0	<1	---	---
Sulfur	ppm ASTM D5185(m) 950	675	---	---

CONTAMINANTS

method	limit/base	current	history1	history2
Silicon	ppm ASTM D5185(m) >150	2	---	---
Potassium	ppm ASTM D5185(m)	4	---	---

GREASE CONDITION

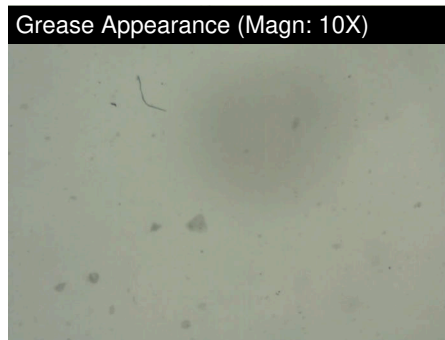
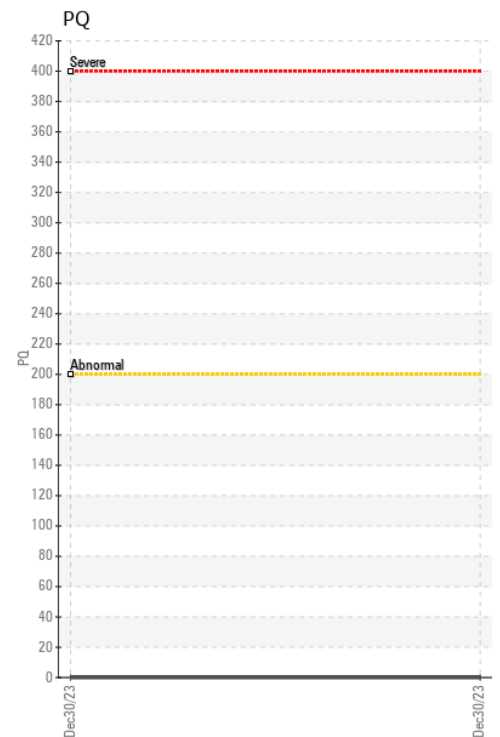
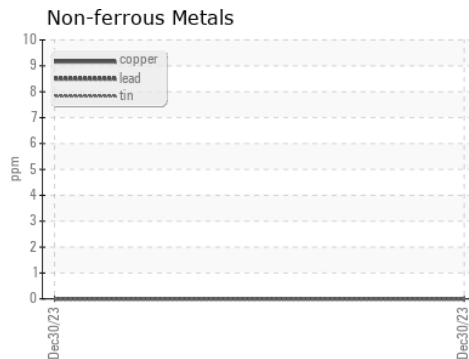
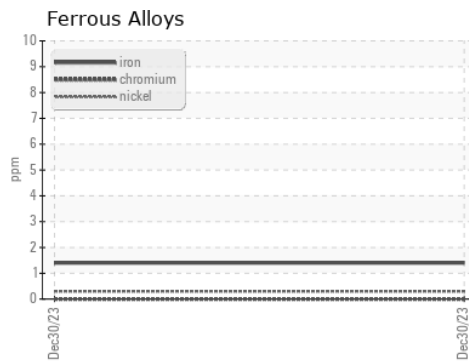
method	limit/base	current	history1	history2
Grease Color	Visual* Tan	Beige	---	---
Texture	In-house* Stringy	Buttery	---	---
NLGI Consistency	NLGI Scale SKF Method* 2.5	2	---	---

GREASE ANALYSIS



SAMPLE IMAGES	method	limit/base	current	history1	history2
Color				no image	no image
Bottom				no image	no image
PrtFilter				no image	no image

GRAPHS



Laboratory : WearCheck - C8-1175 Appleby Line, Burlington, ON L7L 5H9
Sample No. : PC **Received** : 17 Jan 2024
Lab Number : 02609586 **Diagnosed** : 19 Jan 2024
Unique Number : 5710672 **Diagnostician** : Bill Quesnel
Test Package : GRS 1 (Additional Tests: BottomAnalysis)

*To discuss this sample report, contact Customer Service at 1-800-268-2131.
 Test denoted (*) outside scope of accreditation, (m) method modified, (e) tested at external lab.
 Validity of results and interpretation are based on the sample and information as supplied.*

Suncor - Terra Nova Projects
 Scotia Centre, 235 Water Strret
 St. John's, NL
 CA A1C 1B6
 Contact: Josh Hynes
 joshynes@suncor.com
 T: (709)778-3575
 F: (709)724-2835