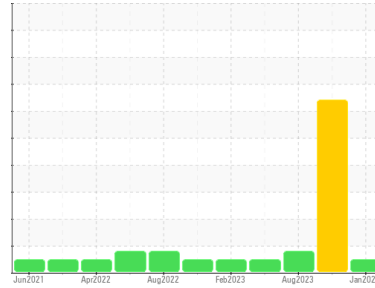




OIL ANALYSIS REPORT

Sample Rating Trend



NORMAL



Machine Id
811032
Component
Transmission (Auto)
Fluid
DEXRON III (--- GAL)

DIAGNOSIS

Recommendation

Échantillonner de nouveau l'équipement au prochain intervalle de vidange afin d'en surveiller la condition. Le fluide n'était pas spécifié, toutefois, une comparaison avec d'autres fluides indiqua que ce fluide est du (GENERIC) DEXRON III. Veuillez confirmer.

Wear

Les taux d'usure de tous les composants sont normaux.

Contamination

Il n'y a aucun indice de contamination dans le fluide.

Fluid Condition

L'état de le fluide est acceptable pour la durée de service.

SAMPLE INFORMATION

method	limit/base	current	history1	history2
Sample Number	Client Info	GFL0110445	GFL0097407	GFL0089666
Sample Date	Client Info	17 Jan 2024	26 Sep 2023	22 Aug 2023
Machine Age	hrs	6521	6031	5730
Oil Age	hrs	600	6031	5157
Oil Changed	Client Info	N/A	N/A	N/A
Sample Status		NORMAL	SEVERE	ABNORMAL

CONTAMINATION

method	limit/base	current	history1	history2
Water	WC Method >0.1	NEG	NEG	NEG

WEAR METALS

method	limit/base	current	history1	history2
Iron	ppm ASTM D5185(m) >160	22	▲ 162	107
Chromium	ppm ASTM D5185(m) >5	0	<1	<1
Nickel	ppm ASTM D5185(m) >5	0	1	<1
Titanium	ppm ASTM D5185(m)	0	1	0
Silver	ppm ASTM D5185(m) >5	0	<1	<1
Aluminum	ppm ASTM D5185(m) >50	8	▲ 84	▲ 51
Lead	ppm ASTM D5185(m) >50	1	13	11
Copper	ppm ASTM D5185(m) >225	4	28	26
Tin	ppm ASTM D5185(m) >10	<1	6	6
Antimony	ppm ASTM D5185(m)	0	0	0
Vanadium	ppm ASTM D5185(m)	0	0	0
Beryllium	ppm ASTM D5185(m)	0	0	0
Cadmium	ppm ASTM D5185(m)	0	0	0

ADDITIVES

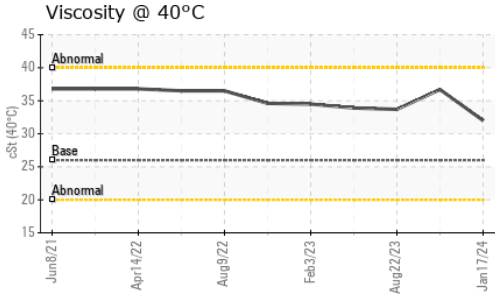
method	limit/base	current	history1	history2
Boron	ppm ASTM D5185(m)	63	66	68
Barium	ppm ASTM D5185(m)	0	<1	<1
Molybdenum	ppm ASTM D5185(m)	0	0	<1
Manganese	ppm ASTM D5185(m)	0	2	2
Magnesium	ppm ASTM D5185(m)	<1	10	1
Calcium	ppm ASTM D5185(m)	117	101	88
Phosphorus	ppm ASTM D5185(m)	205	233	251
Zinc	ppm ASTM D5185(m)	3	33	8
Sulfur	ppm ASTM D5185(m)	1426	1055	1043
Lithium	ppm ASTM D5185(m)	<1	<1	<1

CONTAMINANTS

method	limit/base	current	history1	history2
Silicon	ppm ASTM D5185(m) >20	4	● 81	11
Sodium	ppm ASTM D5185(m)	5	32	23
Potassium	ppm ASTM D5185(m) >20	4	14	3



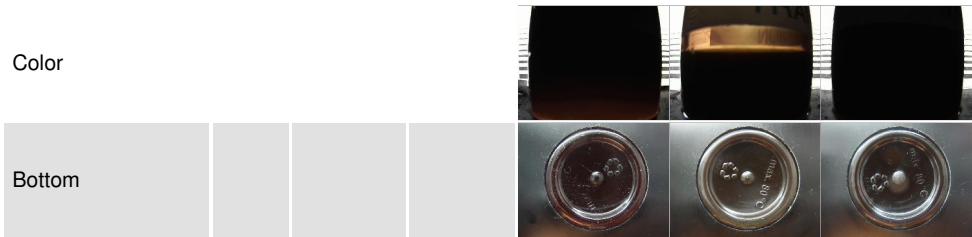
OIL ANALYSIS REPORT



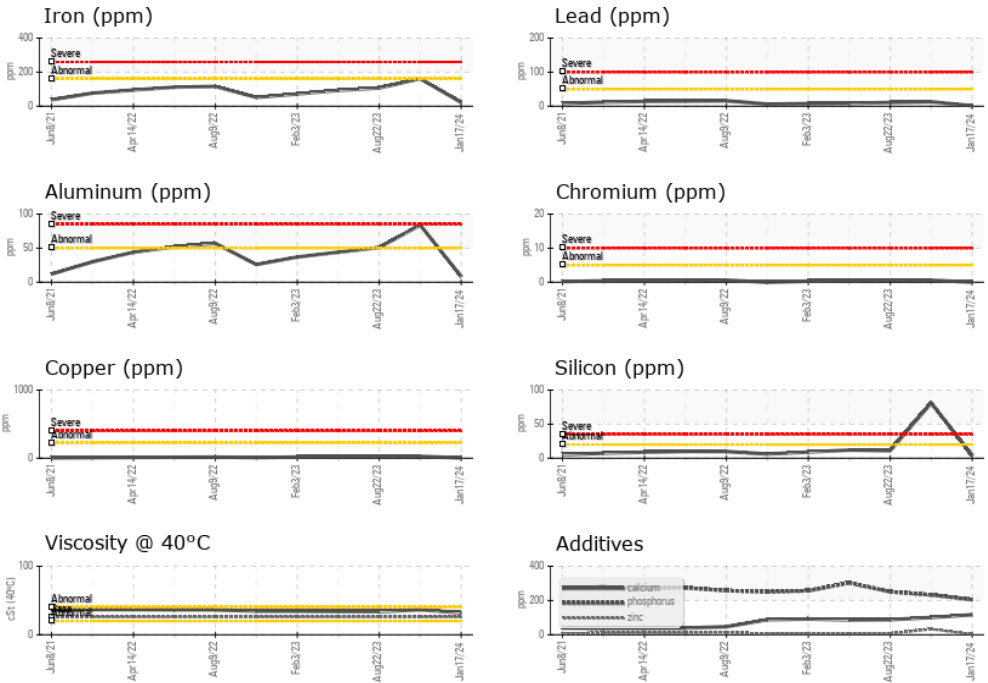
VISUAL	method	limit/base	current	history1	history2
White Metal	scalar	Visual*	NONE	NONE	NONE
Yellow Metal	scalar	Visual*	NONE	NONE	NONE
Precipitate	scalar	Visual*	NONE	NONE	NONE
Silt	scalar	Visual*	NONE	NONE	NONE
Debris	scalar	Visual*	NONE	NONE	NONE
Sand/Dirt	scalar	Visual*	NONE	NONE	NONE
Appearance	scalar	Visual*	NORML	NORML	NORML
Odor	scalar	Visual*	NORML	NORML	NORML
Emulsified Water	scalar	Visual*	>0.1	NEG	NEG
Free Water	scalar	Visual*		NEG	NEG

FLUID PROPERTIES	method	limit/base	current	history1	history2	
Visc @ 40°C	cSt	ASTM D7279(m)	26.0	32.0	36.7	33.7

SAMPLE IMAGES	method	limit/base	current	history1	history2
---------------	--------	------------	---------	----------	----------



GRAPHS



Laboratory : WearCheck - C8-1175 Appleby Line, Burlington, ON L7L 5H9 GFL Environmental - 732 - Beauce - Hauling - Solid Waste
Sample No. : GFL0110445 **Received** : 22 Jan 2024
Lab Number : **02610326** **Diagnosed** : 22 Jan 2024
Unique Number : 5711412 **Diagnostician** : Wes Davis
Test Package : MOB 1

To discuss this sample report, contact Customer Service at 1-800-268-2131.
 Test denoted (*) outside scope of accreditation, (m) method modified, (e) tested at external lab.
 Validity of results and interpretation are based on the sample and information as supplied.

Contact: Denis Bedard
 T: (418)774-5275
 F: