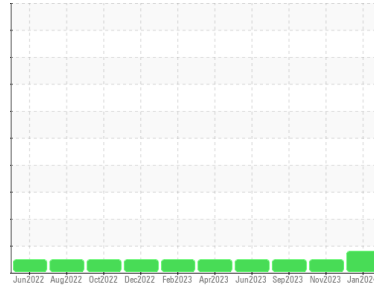


Machine Id
COMP 3 (S/N 5508373)

Component
3 Compressor

Fluid
PETRO CANADA SYNDURO SHB ISO 68 (50 mL)



DIAGNOSIS

Recommendation

Resample at the next service interval to monitor.

Wear

All component wear rates are normal.

Contamination

The water content is negligible. There is no indication of any contamination in the oil.

Fluid Condition

Viscosity of sample indicates oil is within ISO 100 range, advise investigate. The AN level is acceptable for this fluid. The condition of the oil is suitable for further service.

SAMPLE INFORMATION

	method	limit/base	current	history1	history2
Sample Number	Client Info		PC0080818	PC0080822	PC0070459
Sample Date	Client Info		15 Jan 2024	12 Nov 2023	16 Sep 2023
Machine Age	hrs	Client Info	37079	36026	35014
Oil Age	hrs	Client Info	3659	5118	6307
Oil Changed	Client Info		Changed	Changed	N/A
Sample Status			ABNORMAL	NORMAL	NORMAL

WEAR METALS

	method	limit/base	current	history1	history2
PQ	ASTM D8184*		0	0	0
Iron	ppm	ASTM D5185(m) >50	0	0	<1
Chromium	ppm	ASTM D5185(m) >10	0	0	0
Nickel	ppm	ASTM D5185(m)	<1	<1	0
Titanium	ppm	ASTM D5185(m)	0	0	0
Silver	ppm	ASTM D5185(m)	0	<1	<1
Aluminum	ppm	ASTM D5185(m) >25	<1	<1	0
Lead	ppm	ASTM D5185(m) >25	0	0	0
Copper	ppm	ASTM D5185(m) >50	<1	<1	<1
Tin	ppm	ASTM D5185(m) >15	0	0	0
Antimony	ppm	ASTM D5185(m)	0	0	0
Vanadium	ppm	ASTM D5185(m)	0	0	0
Beryllium	ppm	ASTM D5185(m)	0	0	0
Cadmium	ppm	ASTM D5185(m)	0	0	0

ADDITIVES

	method	limit/base	current	history1	history2
Boron	ppm	ASTM D5185(m) 0	<1	<1	<1
Barium	ppm	ASTM D5185(m) 5.0	0	<1	0
Molybdenum	ppm	ASTM D5185(m) 0	0	0	0
Manganese	ppm	ASTM D5185(m)	0	0	0
Magnesium	ppm	ASTM D5185(m) 5.0	0	0	0
Calcium	ppm	ASTM D5185(m) 5.0	<1	<1	0
Phosphorus	ppm	ASTM D5185(m) 100	10	11	17
Zinc	ppm	ASTM D5185(m) 5.0	2	2	1
Sulfur	ppm	ASTM D5185(m) 1900	1441	1496	1528
Lithium	ppm	ASTM D5185(m)	<1	<1	<1

CONTAMINANTS

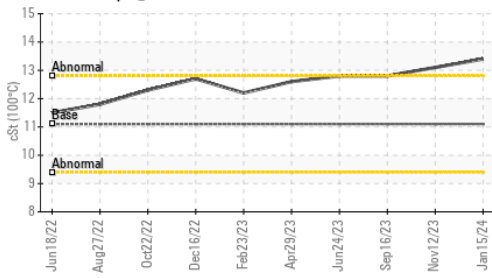
	method	limit/base	current	history1	history2
Silicon	ppm	ASTM D5185(m) >25	0	0	0
Sodium	ppm	ASTM D5185(m)	0	0	0
Potassium	ppm	ASTM D5185(m) >20	1	<1	0
Water	%	ASTM D6304* >0.1	0.002	0.003	0.004
ppm Water	ppm	ASTM D6304* >1000	25	26	49.2

FLUID DEGRADATION

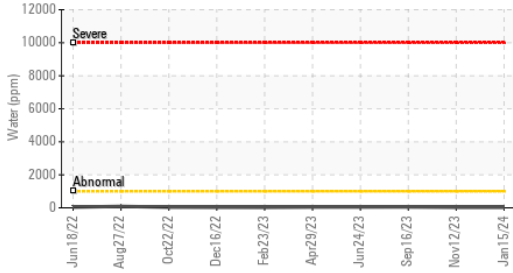
	method	limit/base	current	history1	history2
Acid Number (AN)	mg KOH/g	ASTM D974* 0.3	0.21	0.16	0.17

OIL ANALYSIS REPORT

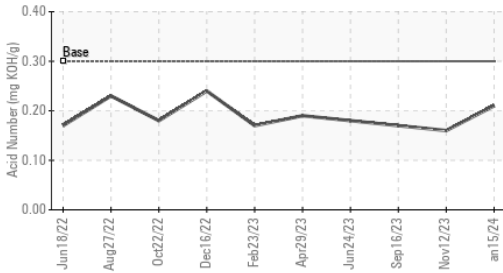
▲ Viscosity @ 100°C



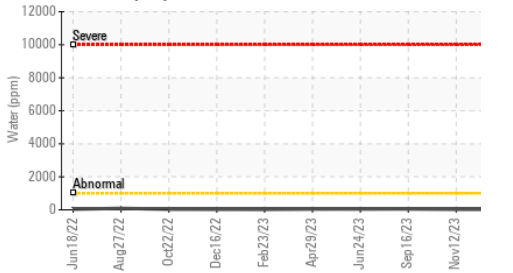
Water (KF)



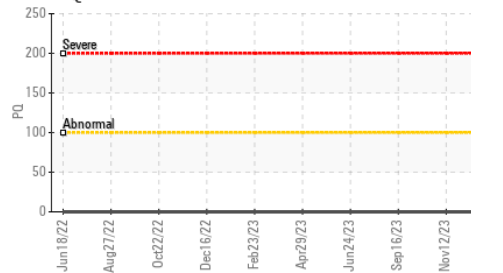
Acid Number



Water (KF)



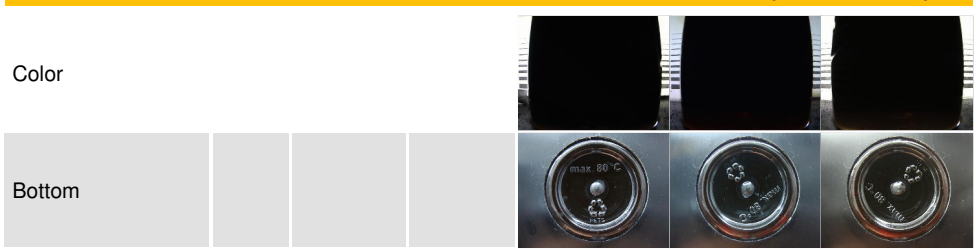
PQ



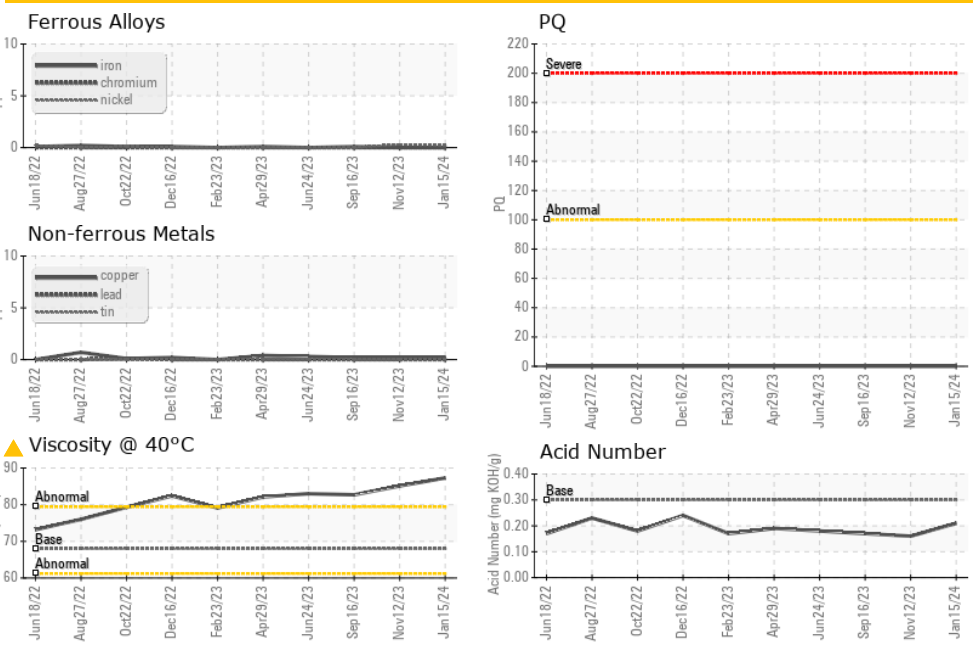
VISUAL	method	limit/base	current	history1	history2
White Metal	scalar	Visual*	NONE	NONE	NONE
Yellow Metal	scalar	Visual*	NONE	NONE	NONE
Precipitate	scalar	Visual*	NONE	NONE	NONE
Silt	scalar	Visual*	NONE	NONE	NONE
Debris	scalar	Visual*	NONE	NONE	NONE
Sand/Dirt	scalar	Visual*	NONE	NONE	NONE
Appearance	scalar	Visual*	NORML	NORML	NORML
Odor	scalar	Visual*	NORML	NORML	NORML
Emulsified Water	scalar	Visual*	>0.1	NEG	NEG
Free Water	scalar	Visual*		NEG	NEG

FLUID PROPERTIES	method	limit/base	current	history1	history2
Visc @ 40°C	cSt	ASTM D7279(m)	68.0	▲ 87.3	85.1
Visc @ 100°C	cSt	ASTM D7279(m)	11.1	▲ 13.4	13.1
Viscosity Index (VI)	Scale	ASTM D2270*	155	154	154

SAMPLE IMAGES



GRAPHS



Laboratory : WearCheck - C8-1175 Appleby Line, Burlington, ON L7L 5H9 **Powercor Manufacturing - Linamar**
Sample No. : PC0080818 **Received** : 25 Jan 2024 545 Elmira Road
Lab Number : 02611124 **Diagnosed** : 26 Jan 2024 Guelph, ON
Unique Number : 5720219 **Diagnostician** : Kevin Marson CA N1K 1C2
Test Package : IND 2 (Additional Tests: KF, KV100, TAN Man, VI)
 To discuss this sample report, contact Customer Service at 1-800-268-2131.
 Test denoted (*) outside scope of accreditation, (m) method modified, (e) tested at external lab.
 Validity of results and interpretation are based on the sample and information as supplied.

