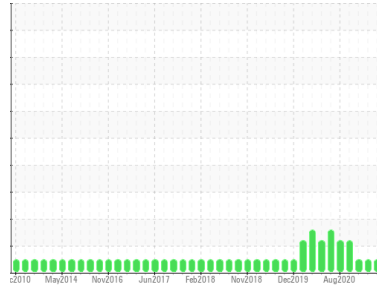


# GREASE ANALYSIS

Sample Rating Trend



**NORMAL**



Area  
**Turret [450258390]**  
Machine Id  
**Turret Swivel #5 - 12 (S/N Sample Tag NC-43601)**  
Component  
**Grease**  
Fluid  
**PETRO CANADA GREASE OG-1 (--- GAL)**

## DIAGNOSIS

### Recommendation

Resample at the next service interval to monitor.

### Wear

All component wear rates are normal.

### Grease Condition

The condition of the grease is acceptable for the time in service.

### Contaminants

There is no indication of any contamination in the grease.

## SAMPLE INFORMATION

method	limit/base	current	history1	history2
Sample Number	Client Info	<b>PC</b>	PC	PC0052488
Sample Date	Client Info	<b>04 Feb 2024</b>	04 Jan 2024	08 Oct 2023
Machine Age	hrs Client Info	<b>0</b>	0	0
Grease Age	hrs Client Info	<b>0</b>	0	0
Grease Serviced	Client Info	<b>N/A</b>	N/A	N/A
Sample Status		<b>NORMAL</b>	NORMAL	NORMAL

## CONTAMINATION

method	limit/base	current	history1	history2
Water	WC Method >0.1	<b>NEG</b>	NEG	NEG

## WEAR METALS

method	limit/base	current	history1	history2
PQ	ASTM D8184* >200	<b>0</b>	0	0
Iron	ppm ASTM D5185(m) >250	<b>7</b>	5	6
Chromium	ppm ASTM D5185(m) >10	<b>0</b>	0	0
Nickel	ppm ASTM D5185(m) >5	<b>&lt;1</b>	<1	<1
Cadmium	ppm ASTM D5185(m)	<b>0</b>	0	0
Titanium	ppm ASTM D5185(m)	<b>0</b>	0	0
Vanadium	ppm ASTM D5185(m)	<b>0</b>	0	0
Lead	ppm ASTM D5185(m) >25	<b>0</b>	0	<1
Copper	ppm ASTM D5185(m) >75	<b>&lt;1</b>	<1	<1
Tin	ppm ASTM D5185(m) >5	<b>0</b>	0	0
Silver	ppm ASTM D5185(m) >5	<b>0</b>	0	<1

## ADDITIVES

method	limit/base	current	history1	history2
Boron	ppm ASTM D5185(m)	<b>63</b>	155	169
Magnesium	ppm ASTM D5185(m)	<b>3</b>	6	5
Manganese	ppm ASTM D5185(m)	<b>0</b>	0	0
Molybdenum	ppm ASTM D5185(m)	<b>0</b>	0	0
Phosphorus	ppm ASTM D5185(m)	<b>14</b>	3	11
Zinc	ppm ASTM D5185(m)	<b>24</b>	9	11
Antimony	ppm ASTM D5185(m)	<b>5</b>	<1	0

## THICKENER/SOAP

method	limit/base	current	history1	history2
Aluminum	ppm ASTM D5185(m)	<b>1</b>	2	2
Barium	ppm ASTM D5185(m)	<b>&lt;1</b>	0	<1
Calcium	ppm ASTM D5185(m)	<b>1779</b>	3841	4059
Sodium	ppm ASTM D5185(m)	<b>7</b>	3	4
Lithium	ppm ASTM D5185(m)	<b>47</b>	11	14
Sulfur	ppm ASTM D5185(m)	<b>579</b>	784	781

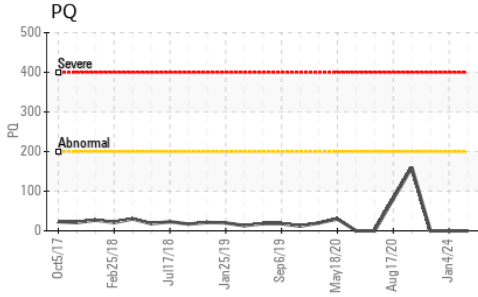
## CONTAMINANTS

method	limit/base	current	history1	history2
Silicon	ppm ASTM D5185(m) >150	<b>2</b>	29	20
Potassium	ppm ASTM D5185(m)	<b>2</b>	3	2

## GREASE CONDITION

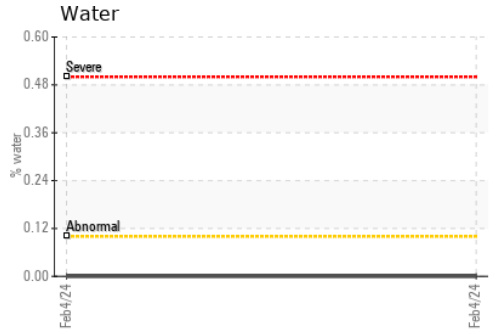
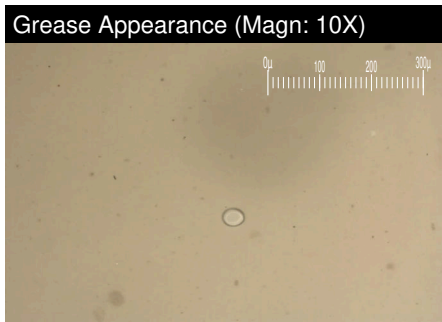
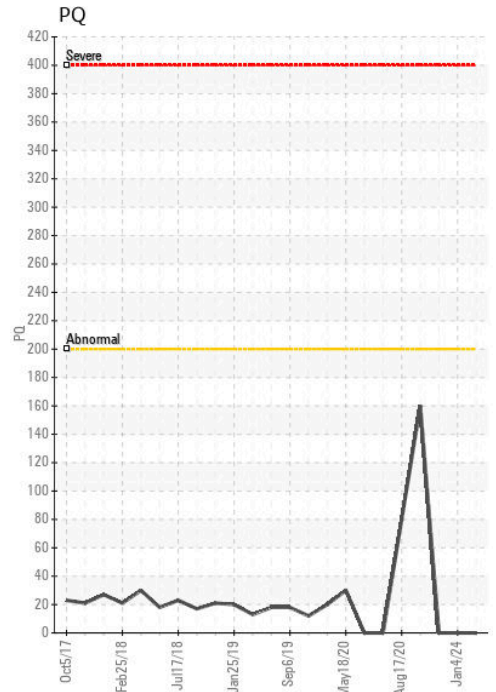
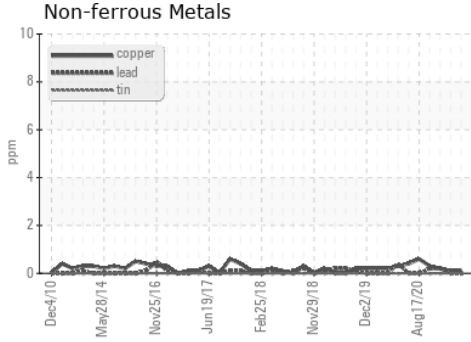
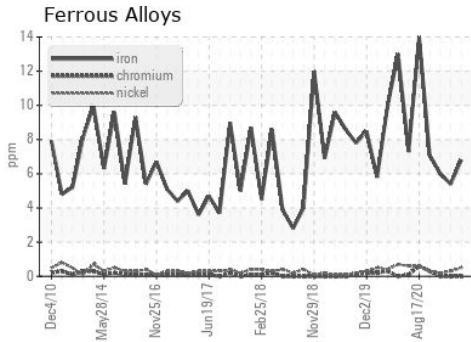
method	limit/base	current	history1	history2
Grease Color	Visual* Tan	<b>Tan</b>	Beige	Cream
Texture	In-house* Buttery	<b>Buttery</b>	Buttery	Buttery
NLGI Consistency	NLGI Scale SKF Method* 1	<b>1</b>	2	1-2

# GREASE ANALYSIS



SAMPLE IMAGES	method	limit/base	current	history1	history2
Color					
Bottom					
PrtFilter					

## GRAPHS



**Laboratory** : WearCheck - C8-1175 Appleby Line, Burlington, ON L7L 5H9  
**Sample No.** : PC  
**Lab Number** : 02615185  
**Unique Number** : 5724280  
**Test Package** : GRS 1 ( Additional Tests: BottomAnalysis, KV40, Spat, TAN Auto, TAN Man )

**Received** : 12 Feb 2024  
**Tested** : 15 Feb 2024  
**Diagnosed** : 15 Feb 2024 - Bill Quesnel

**Suncor - Terra Nova Projects**  
 Scotia Centre, 235 Water Street  
 St. John's, NL  
 CA A1C 1B6  
 Contact: Josh Hynes  
 joshhynes@suncor.com  
 T: (709)778-3575  
 F: (709)724-2835

To discuss this sample report, contact Customer Service at 1-800-268-2131.  
 Test denoted (\*) outside scope of accreditation, (m) method modified, (e) tested at external lab.  
 Validity of results and interpretation are based on the sample and information as supplied.