



# OIL ANALYSIS REPORT

Sample Rating Trend

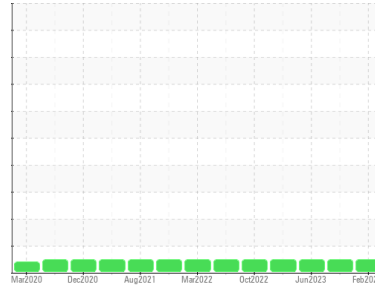
**NORMAL**



Machine Id  
**OR564**

Component  
**Transmission (Manual)**

Fluid  
**PETRO CANADA DURATRAN (23 LTR)**



## DIAGNOSIS

### Recommendation

Resample at the next service interval to monitor.

### Wear

All component wear rates are normal.

### Contamination

There is no indication of any contamination in the fluid.

### Fluid Condition

The condition of the fluid is acceptable for the time in service.

## SAMPLE INFORMATION

	method	limit/base	current	history1	history2
Sample Number	Client Info		<b>GFL0092214</b>	GFL0087399	GFL0087376
Sample Date	Client Info		<b>09 Feb 2024</b>	22 Aug 2023	19 Jun 2023
Machine Age	hrs	Client Info	<b>20550</b>	19195	18697
Oil Age	hrs	Client Info	<b>16204</b>	1000	1659
Oil Changed	Client Info		<b>Not Changed</b>	Not Changed	Not Changed
Sample Status			<b>NORMAL</b>	NORMAL	NORMAL

## CONTAMINATION

	method	limit/base	current	history1	history2
Water	WC Method	>0.1	<b>NEG</b>	NEG	NEG

## WEAR METALS

	method	limit/base	current	history1	history2
Iron	ppm	ASTM D5185(m) >200	<b>8</b>	5	6
Chromium	ppm	ASTM D5185(m) >5	<b>0</b>	0	0
Nickel	ppm	ASTM D5185(m) >5	<b>0</b>	<1	<1
Titanium	ppm	ASTM D5185(m)	<b>0</b>	0	0
Silver	ppm	ASTM D5185(m) >7	<b>0</b>	0	<1
Aluminum	ppm	ASTM D5185(m) >25	<b>3</b>	1	2
Lead	ppm	ASTM D5185(m) >45	<b>0</b>	0	<1
Copper	ppm	ASTM D5185(m) >225	<b>1</b>	<1	<1
Tin	ppm	ASTM D5185(m) >10	<b>0</b>	0	0
Antimony	ppm	ASTM D5185(m)	<b>0</b>	0	0
Vanadium	ppm	ASTM D5185(m)	<b>0</b>	0	0
Beryllium	ppm	ASTM D5185(m)	<b>0</b>	0	0
Cadmium	ppm	ASTM D5185(m)	<b>0</b>	0	0

## ADDITIVES

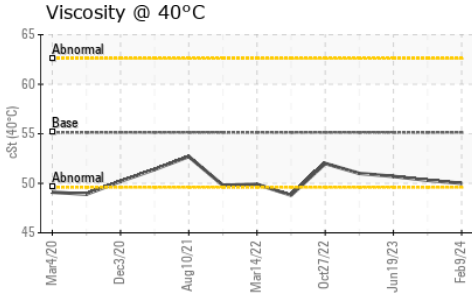
	method	limit/base	current	history1	history2
Boron	ppm	ASTM D5185(m) 110	<b>85</b>	85	89
Barium	ppm	ASTM D5185(m) 0.0	<b>0</b>	0	0
Molybdenum	ppm	ASTM D5185(m) 0.0	<b>2</b>	2	2
Manganese	ppm	ASTM D5185(m) 1	<b>0</b>	0	<1
Magnesium	ppm	ASTM D5185(m) 13	<b>34</b>	31	32
Calcium	ppm	ASTM D5185(m) 3610	<b>3145</b>	3054	3134
Phosphorus	ppm	ASTM D5185(m) 1192	<b>1073</b>	1108	1126
Zinc	ppm	ASTM D5185(m) 1455	<b>1251</b>	1235	1256
Sulfur	ppm	ASTM D5185(m) 2641	<b>2778</b>	2568	2577
Lithium	ppm	ASTM D5185(m)	<b>&lt;1</b>	<1	<1

## CONTAMINANTS

	method	limit/base	current	history1	history2
Silicon	ppm	ASTM D5185(m) >125	<b>8</b>	8	8
Sodium	ppm	ASTM D5185(m)	<b>3</b>	3	3
Potassium	ppm	ASTM D5185(m) >20	<b>&lt;1</b>	<1	<1



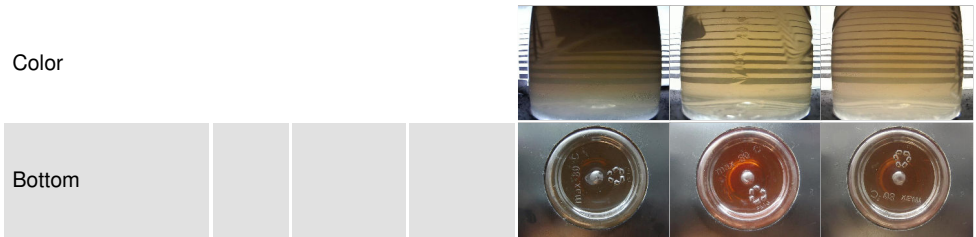
# OIL ANALYSIS REPORT



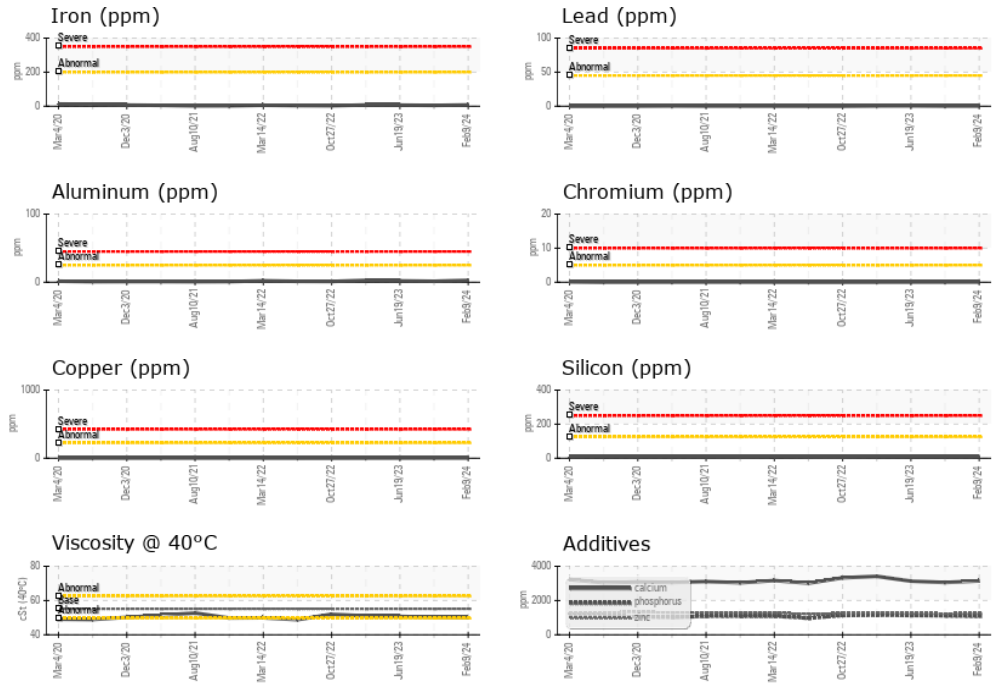
VISUAL	method	limit/base	current	history1	history2
White Metal	scalar	Visual*	NONE	NONE	NONE
Yellow Metal	scalar	Visual*	NONE	NONE	NONE
Precipitate	scalar	Visual*	NONE	NONE	NONE
Silt	scalar	Visual*	NONE	NONE	NONE
Debris	scalar	Visual*	NONE	NONE	NONE
Sand/Dirt	scalar	Visual*	NONE	NONE	NONE
Appearance	scalar	Visual*	NORML	NORML	NORML
Odor	scalar	Visual*	NORML	NORML	NORML
Emulsified Water	scalar	Visual*	>0.1	NEG	NEG
Free Water	scalar	Visual*		NEG	NEG

FLUID PROPERTIES	method	limit/base	current	history1	history2	
Visc @ 40°C	cSt	ASTM D7279(m)	55.14	<b>50.0</b>	50.3	50.7

SAMPLE IMAGES	method	limit/base	current	history1	history2
---------------	--------	------------	---------	----------	----------



## GRAPHS



**Laboratory** : WearCheck - C8-1175 Appleby Line, Burlington, ON L7L 5H9  
**Sample No.** : GFL0092214  
**Lab Number** : **02615418**  
**Unique Number** : 5724513  
**Test Package** : MOB 1

**GFL Environmental - 720 - Lafleche - Landfill**  
 17125 Lafleche Road,  
 Moose Creek, ON  
 CA K0C 1W0  
 Contact: Charles Bergeron  
 cbergeron@gflenv.com  
 T: (613)538-4853  
 F:

To discuss this sample report, contact Customer Service at 1-800-268-2131.  
 Test denoted (\*) outside scope of accreditation, (m) method modified, (e) tested at external lab.  
 Validity of results and interpretation are based on the sample and information as supplied.