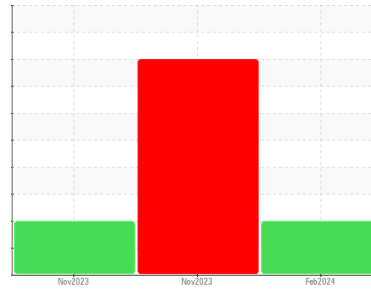




# OIL ANALYSIS REPORT

Sample Rating Trend



**WEAR**



Machine Id  
**OR425**  
Component  
**Hydraulic System**  
Fluid  
**CAT TDTO 30W (--- GAL)**

## DIAGNOSIS

### Recommendation

Nous recommandons le remplacement des filtres de ce composant. Confirmez la source du lubrifiant utilisé pour l'appoint/remplissage. Nous vous recommandons d'échantillonner de nouveau dès que possible afin de contrôler la situation.

### Wear

Usure de segment.

### Contamination

Il y a une quantité modérée de particules (de 4 à 14 microns) dans l'huile.

### Fluid Condition

La viscosité de l'échantillon se situe dans la portée de l'SAE 10W; nous vous conseillons de vérifier. Ceci, en plus des niveaux d'additifs, indique que la marque ou le type d'huile ne correspond pas à ce qui a été signalé. L'huile n'est plus en état de service en raison d'une usure anormale et/ou sévère.

## SAMPLE INFORMATION

	method	limit/base	current	history1	history2
Sample Number	Client Info		<b>GFL0089192</b>	GFL0097087	GFL0097088
Sample Date	Client Info		<b>15 Feb 2024</b>	10 Nov 2023	10 Nov 2023
Machine Age	hrs	Client Info	<b>18368</b>	18125	18125
Oil Age	hrs	Client Info	<b>0</b>	0	0
Oil Changed	Client Info		<b>Not Changed</b>	Not Changd	Not Changed
Sample Status			<b>ABNORMAL</b>	SEVERE	ABNORMAL

## CONTAMINATION

	method	limit/base	current	history1	history2
Water	WC Method	>0.1	<b>NEG</b>	NEG	NEG

## WEAR METALS

	method	limit/base	current	history1	history2
PQ	ASTM D8184*		<b>0</b>	16	---
Iron	ppm	ASTM D5185(m) >20	<b>20</b>	▲ 57	18
Chromium	ppm	ASTM D5185(m) >10	▲ <b>11</b>	0	▲ 11
Nickel	ppm	ASTM D5185(m) >10	<b>0</b>	0	0
Titanium	ppm	ASTM D5185(m)	<b>0</b>	0	0
Silver	ppm	ASTM D5185(m)	<b>0</b>	<1	<1
Aluminum	ppm	ASTM D5185(m) >10	<b>2</b>	● 11	2
Lead	ppm	ASTM D5185(m) >10	<b>&lt;1</b>	0	<1
Copper	ppm	ASTM D5185(m) >75	<b>1</b>	<1	1
Tin	ppm	ASTM D5185(m) >10	<b>0</b>	0	0
Antimony	ppm	ASTM D5185(m)	<b>0</b>	0	0
Vanadium	ppm	ASTM D5185(m)	<b>0</b>	0	0
Beryllium	ppm	ASTM D5185(m)	<b>0</b>	0	0
Cadmium	ppm	ASTM D5185(m)	<b>0</b>	0	0

## ADDITIVES

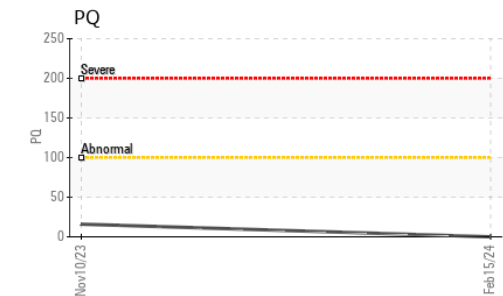
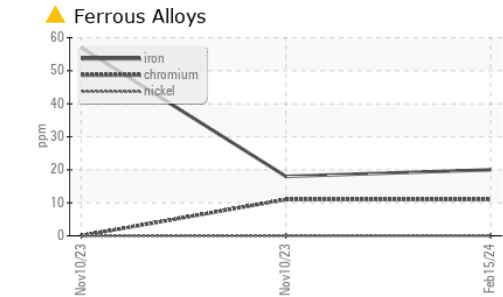
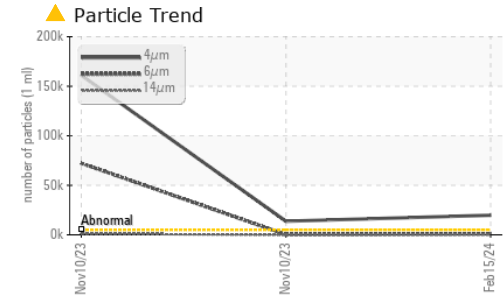
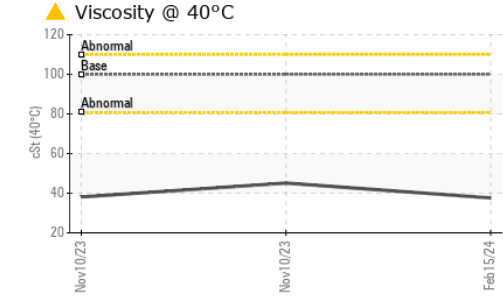
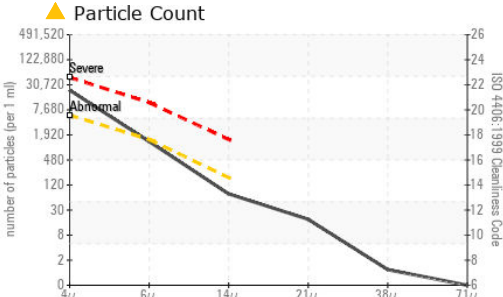
	method	limit/base	current	history1	history2
Boron	ppm	ASTM D5185(m)	<b>4</b>	5	5
Barium	ppm	ASTM D5185(m)	<b>0</b>	<1	<1
Molybdenum	ppm	ASTM D5185(m)	<b>&lt;1</b>	0	<1
Manganese	ppm	ASTM D5185(m)	<b>0</b>	<1	0
Magnesium	ppm	ASTM D5185(m)	<b>14</b>	19	14
Calcium	ppm	ASTM D5185(m) 2980	<b>1202</b>	3068	1153
Phosphorus	ppm	ASTM D5185(m) 1100	<b>740</b>	1052	726
Zinc	ppm	ASTM D5185(m) 1270	<b>810</b>	1229	824
Sulfur	ppm	ASTM D5185(m)	<b>2083</b>	4836	1978
Lithium	ppm	ASTM D5185(m)	<b>&lt;1</b>	<1	<1

## CONTAMINANTS

	method	limit/base	current	history1	history2
Silicon	ppm	ASTM D5185(m) >20	<b>6</b>	▲ 40	6
Sodium	ppm	ASTM D5185(m)	<b>2</b>	3	2
Potassium	ppm	ASTM D5185(m) >20	<b>1</b>	5	<1



# OIL ANALYSIS REPORT

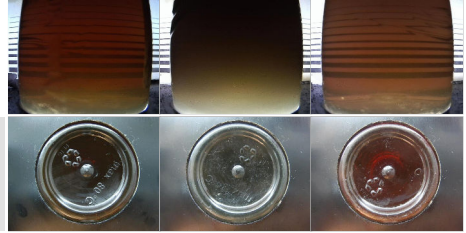


FLUID CLEANLINESS	method	limit/base	current	history1	history2
Particles >4µm	ASTM D7647	>5000	▲ 19800	▲ 161018	▲ 13717
Particles >6µm	ASTM D7647	>1300	1166	▲ 72194	206
Particles >14µm	ASTM D7647	>160	65	▲ 981	7
Particles >21µm	ASTM D7647	>40	16	▲ 185	2
Particles >38µm	ASTM D7647	>10	1	9	1
Particles >71µm	ASTM D7647	>3	0	0	1
Oil Cleanliness	ISO 4406 (c)	>19/17/14	▲ 21/17/13	▲ 25/23/17	▲ 21/15/10

VISUAL	method	limit/base	current	history1	history2
White Metal	scalar	Visual*	NONE	NONE	NONE
Yellow Metal	scalar	Visual*	NONE	NONE	NONE
Precipitate	scalar	Visual*	NONE	NONE	NONE
Silt	scalar	Visual*	NONE	NONE	NONE
Debris	scalar	Visual*	NONE	NONE	NONE
Sand/Dirt	scalar	Visual*	NONE	NONE	NONE
Appearance	scalar	Visual*	NORML	NORML	NORML
Odor	scalar	Visual*	NORML	NORML	NORML
Emulsified Water	scalar	Visual*	>0.1	NEG	NEG
Free Water	scalar	Visual*	NEG	NEG	NEG

FLUID PROPERTIES	method	limit/base	current	history1	history2	
Visc @ 40°C	cSt	ASTM D7279(m)	100	▲ 37.6	▲ 45.1	▲ 38.1

SAMPLE IMAGES	method	limit/base	current	history1	history2
Color					
Bottom					



**Laboratory** : WearCheck - C8-1175 Appleby Line, Burlington, ON L7L 5H9  
**Sample No.** : GFL0089192  
**Lab Number** : 02617125  
**Unique Number** : 5734235  
**Test Package** : MOB 1 ( Additional Tests: PQ, PrtCount )  
**Received** : 21 Feb 2024  
**Tested** : 22 Feb 2024  
**Diagnosed** : 22 Feb 2024 - Kevin Marson

**GFL Environmental - 784 - Saint-Hyacinthe**  
 3525 Boul. Laurier Est.,  
 Saint-Hyacinthe, QC  
 CA J2R 2B2  
 Contact: Nadine Authier  
 nauthier@matrec.ca  
 T: (450)773-9689  
 F:

To discuss this sample report, contact Customer Service at 1-800-268-2131.  
 Test denoted (\*) outside scope of accreditation, (m) method modified, (e) tested at external lab.  
 Validity of results and interpretation are based on the sample and information as supplied.