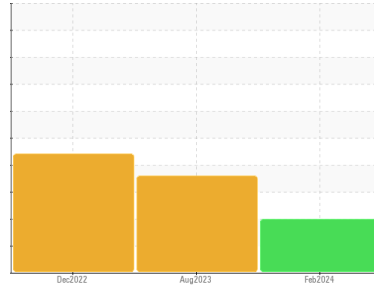




OIL ANALYSIS REPORT

Sample Rating Trend



ISO



Machine Id
7245

Component
Hydraulic System

Fluid
PETRO CANADA HYDREX MV 32 (--- GAL)

DIAGNOSIS

Recommendation

Vérifier les scelles et/ou les filtres pour des points d'entrée des contaminants. Le reniflard d'air doit être réparé. S'il n'est pas classé, nous vous recommandons de le remplacer par un reniflard à air adapté au micron et / ou au dessicant. Si évalué, nous vous recommandons de réparer / remplacer le reniflard. Nous avons pris note que le filtre a été remplacé au moment de l'échantillonnage. Échantillonner de nouveau dans 30 à 45 jours afin de contrôler la situation.

Wear

Les taux d'usure de tous les composants sont normaux.

Contamination

Il y a une grande quantité de limon (particules de 4 à 14 microns) dans l'huile.

Fluid Condition

L'huile peut encore servir si la contamination peut être réduite à un niveau acceptable.

SAMPLE INFORMATION

	method	limit/base	current	history1	history2
Sample Number	Client Info		GFL0103686	GFL0088817	GFL0062077
Sample Date	Client Info		11 Feb 2024	29 Aug 2023	20 Dec 2022
Machine Age	kms	Client Info	13507	257025	155000
Oil Age	kms	Client Info	0	1200	0
Oil Changed	Client Info		Not Chngd	Not Chngd	N/A
Sample Status			SEVERE	SEVERE	SEVERE

CONTAMINATION

	method	limit/base	current	history1	history2
Water	WC Method	>0.1	NEG	NEG	NEG

WEAR METALS

	method	limit/base	current	history1	history2
Iron	ppm	ASTM D5185(m) >40	7	6	5
Chromium	ppm	ASTM D5185(m) >5	1	1	3
Nickel	ppm	ASTM D5185(m) >2	0	<1	0
Titanium	ppm	ASTM D5185(m) >2	0	0	0
Silver	ppm	ASTM D5185(m)	0	0	0
Aluminum	ppm	ASTM D5185(m) >8	1	<1	<1
Lead	ppm	ASTM D5185(m) >5	0	0	0
Copper	ppm	ASTM D5185(m) >20	<1	<1	0
Tin	ppm	ASTM D5185(m) >2	0	0	0
Antimony	ppm	ASTM D5185(m) >2	0	0	0
Vanadium	ppm	ASTM D5185(m)	0	0	0
Beryllium	ppm	ASTM D5185(m)	0	0	0
Cadmium	ppm	ASTM D5185(m)	0	0	0

ADDITIVES

	method	limit/base	current	history1	history2
Boron	ppm	ASTM D5185(m) 0	<1	<1	<1
Barium	ppm	ASTM D5185(m) 0	0	0	0
Molybdenum	ppm	ASTM D5185(m) 0	10	11	<1
Manganese	ppm	ASTM D5185(m) 1	0	0	0
Magnesium	ppm	ASTM D5185(m) 0	160	176	4
Calcium	ppm	ASTM D5185(m) 50	233	246	59
Phosphorus	ppm	ASTM D5185(m) 330	459	490	353
Zinc	ppm	ASTM D5185(m) 430	543	556	412
Sulfur	ppm	ASTM D5185(m) 760	1133	1099	782
Lithium	ppm	ASTM D5185(m)	<1	<1	<1

CONTAMINANTS

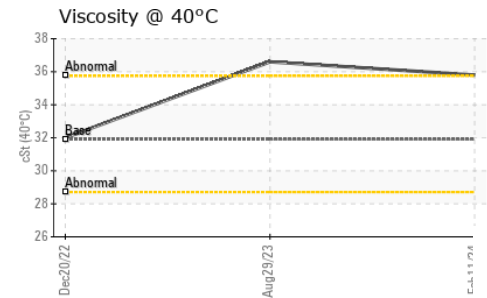
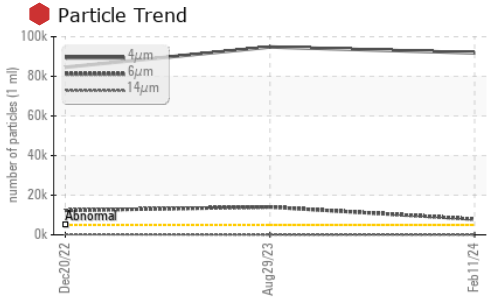
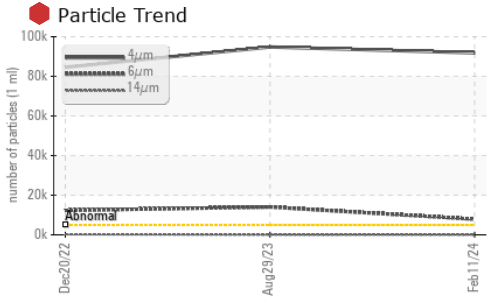
	method	limit/base	current	history1	history2
Silicon	ppm	ASTM D5185(m) >20	2	2	<1
Sodium	ppm	ASTM D5185(m)	<1	1	1
Potassium	ppm	ASTM D5185(m) >20	<1	<1	0

FLUID CLEANLINESS

	method	limit/base	current	history1	history2
Particles >4µm	ASTM D7647	>5000	91852	94817	84593
Particles >6µm	ASTM D7647	>1300	7889	14032	12329
Particles >14µm	ASTM D7647	>160	63	73	287
Particles >21µm	ASTM D7647	>40	13	18	76
Particles >38µm	ASTM D7647	>10	2	1	2
Particles >71µm	ASTM D7647	>3	1	0	0
Oil Cleanliness	ISO 4406 (c)	>19/17/14	24/20/13	24/21/13	24/21/15



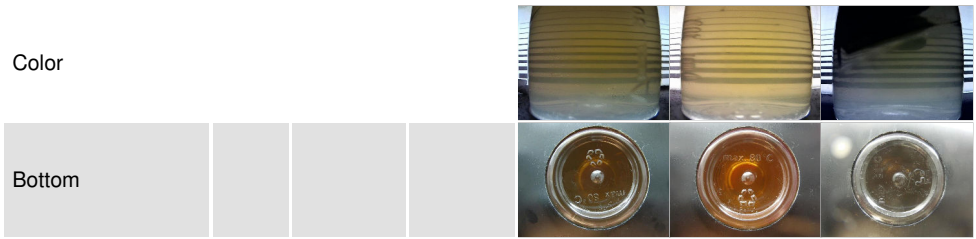
OIL ANALYSIS REPORT



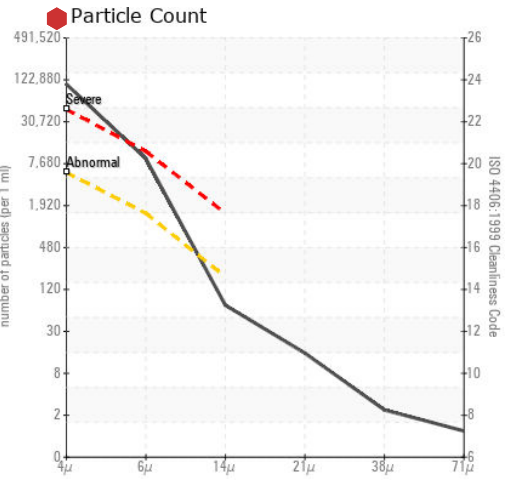
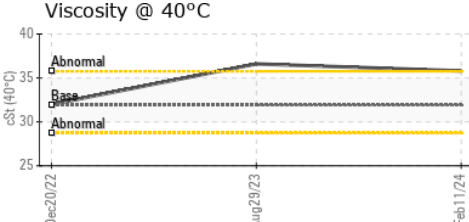
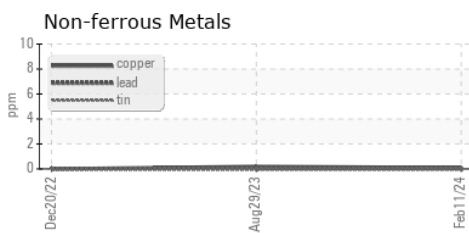
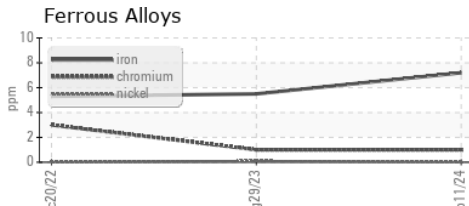
PARAMETER	method	limit/base	current	history1	history2
White Metal	scalar	Visual*	NONE	NONE	NONE
Yellow Metal	scalar	Visual*	NONE	NONE	NONE
Precipitate	scalar	Visual*	NONE	NONE	NONE
Silt	scalar	Visual*	NONE	NONE	NONE
Debris	scalar	Visual*	NONE	NONE	NONE
Sand/Dirt	scalar	Visual*	NONE	NONE	NONE
Appearance	scalar	Visual*	NORML	NORML	NORML
Odor	scalar	Visual*	NORML	NORML	NORML
Emulsified Water	scalar	Visual*	>0.1	NEG	NEG
Free Water	scalar	Visual*		NEG	NEG

PARAMETER	method	limit/base	current	history1	history2	
Visc @ 40°C	cSt	ASTM D7279(m)	31.9	35.8	36.6	32.0

PARAMETER	method	limit/base	current	history1	history2
-----------	--------	------------	---------	----------	----------



GRAPHS



Laboratory : WearCheck - C8-1175 Appleby Line, Burlington, ON L7L 5H9 **GFL Environmental - 780 - GMA - ICI - Solid Waste**
Sample No. : GFL0103686 **Received** : 21 Feb 2024 4365 boul. St-Elzear Ouest,
Lab Number : 02617128 **Tested** : 22 Feb 2024 Laval, QC
Unique Number : 5734238 **Diagnosed** : 22 Feb 2024 - Wes Davis CA H7P 4J3
Test Package : MOB 1 (Additional Tests: PrtCount) Contact: Pieces Laval
 To discuss this sample report, contact Customer Service at 1-800-268-2131. pieces.laval@gflenv.com
 Test denoted (*) outside scope of accreditation, (m) method modified, (e) tested at external lab. T: (450)687-3838
 Validity of results and interpretation are based on the sample and information as supplied. F: