



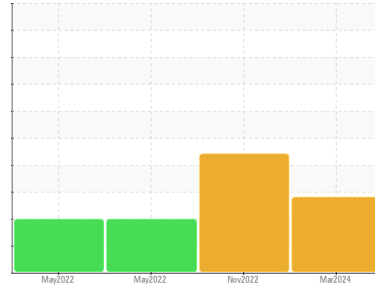
# OIL ANALYSIS REPORT

Sample Rating Trend

ISO



Machine Id  
**410016**  
 Component  
**Hydraulic System**  
 Fluid  
**PETRO CANADA HYDREX MV 32 (--- GAL)**



## DIAGNOSIS

### Recommendation

Vérifier les scelles et/ou les filtres pour des points d'entrée des contaminants. Le reniflard d'air doit être réparé. S'il n'est pas classé, nous vous recommandons de le remplacer par un reniflard à air adapté au micron et / ou au dessicant. Si évalué, nous vous recommandons de réparer / remplacer le reniflard. Nous avons pris note que le filtre a été remplacé au moment de l'échantillonnage. Échantillonner de nouveau dans 30 à 45 jours afin de contrôler la situation.

### Wear

Les taux d'usure de tous les composants sont normaux.

### Contamination

Il y a une grande quantité de limon (particules de 4 à 14 microns) dans l'huile.

### Fluid Condition

L'huile peut encore servir si la contamination peut être réduite à un niveau acceptable.

## SAMPLE INFORMATION

method	limit/base	current	history1	history2
Sample Number	Client Info	<b>GFL0107558</b>	GFL0061828	GFL0043136
Sample Date	Client Info	<b>12 Mar 2024</b>	04 Nov 2022	23 May 2022
Machine Age	hrs	<b>6511</b>	3431	2418
Oil Age	hrs	<b>0</b>	0	0
Oil Changed	Client Info	<b>Not Chngd</b>	N/A	Not Chngd
Sample Status		<b>SEVERE</b>	SEVERE	SEVERE

## CONTAMINATION

method	limit/base	current	history1	history2
Water	WC Method >0.1	<b>NEG</b>	NEG	NEG

## WEAR METALS

method	limit/base	current	history1	history2
Iron	ppm ASTM D5185(m) >40	<b>3</b>	2	3
Chromium	ppm ASTM D5185(m) >5	<b>&lt;1</b>	0	<1
Nickel	ppm ASTM D5185(m) >2	<b>&lt;1</b>	<1	0
Titanium	ppm ASTM D5185(m) >2	<b>0</b>	0	0
Silver	ppm ASTM D5185(m)	<b>0</b>	0	0
Aluminum	ppm ASTM D5185(m) >8	<b>&lt;1</b>	<1	<1
Lead	ppm ASTM D5185(m) >5	<b>&lt;1</b>	0	<1
Copper	ppm ASTM D5185(m) >20	<b>2</b>	<1	1
Tin	ppm ASTM D5185(m) >2	<b>0</b>	0	<1
Antimony	ppm ASTM D5185(m) >2	<b>0</b>	<1	0
Vanadium	ppm ASTM D5185(m)	<b>0</b>	0	0
Beryllium	ppm ASTM D5185(m)	<b>0</b>	0	0
Cadmium	ppm ASTM D5185(m)	<b>0</b>	0	0

## ADDITIVES

method	limit/base	current	history1	history2
Boron	ppm ASTM D5185(m) 0	<b>&lt;1</b>	<1	1
Barium	ppm ASTM D5185(m) 0	<b>0</b>	0	0
Molybdenum	ppm ASTM D5185(m) 0	<b>0</b>	0	0
Manganese	ppm ASTM D5185(m) 1	<b>0</b>	0	0
Magnesium	ppm ASTM D5185(m) 0	<b>2</b>	1	2
Calcium	ppm ASTM D5185(m) 50	<b>323</b>	361	595
Phosphorus	ppm ASTM D5185(m) 330	<b>348</b>	271	208
Zinc	ppm ASTM D5185(m) 430	<b>376</b>	207	59
Sulfur	ppm ASTM D5185(m) 760	<b>1158</b>	916	1053
Lithium	ppm ASTM D5185(m)	<b>&lt;1</b>	<1	<1

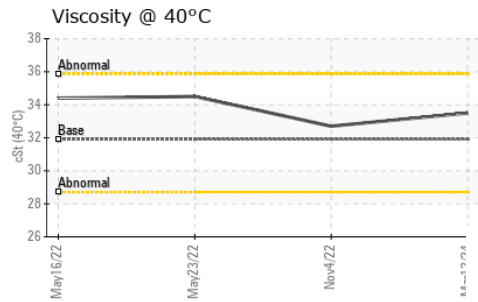
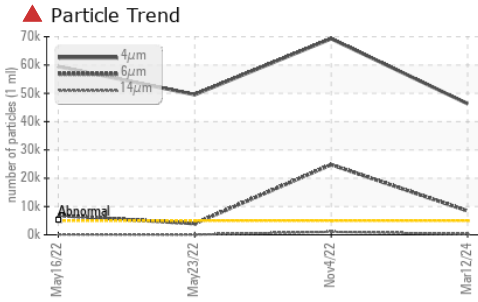
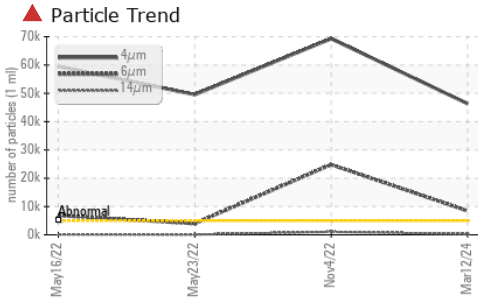
## CONTAMINANTS

method	limit/base	current	history1	history2
Silicon	ppm ASTM D5185(m) >20	<b>&lt;1</b>	<1	<1
Sodium	ppm ASTM D5185(m)	<b>2</b>	1	2
Potassium	ppm ASTM D5185(m) >20	<b>&lt;1</b>	0	<1

## FLUID CLEANLINESS

method	limit/base	current	history1	history2
Particles >4µm	ASTM D7647 >5000	<b>▲ 46319</b>	▲ 69289	▲ 49529
Particles >6µm	ASTM D7647 >1300	<b>▲ 8458</b>	▲ 24814	▲ 3953
Particles >14µm	ASTM D7647 >160	<b>● 250</b>	▲ 1060	60
Particles >21µm	ASTM D7647 >40	<b>● 60</b>	▲ 156	13
Particles >38µm	ASTM D7647 >10	<b>4</b>	4	0
Particles >71µm	ASTM D7647 >3	<b>2</b>	0	0
Oil Cleanliness	ISO 4406 (c) >19/17/14	<b>▲ 23/20/15</b>	▲ 23/22/17	▲ 23/19/13

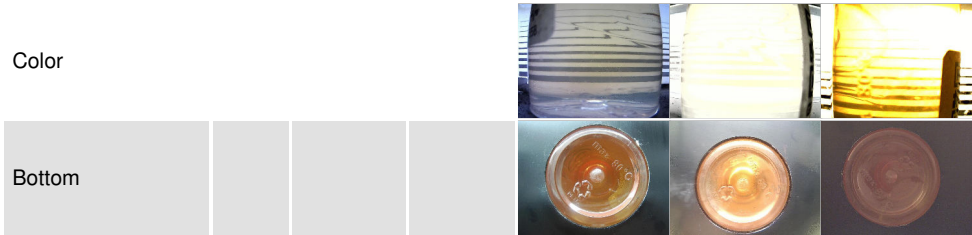
# OIL ANALYSIS REPORT



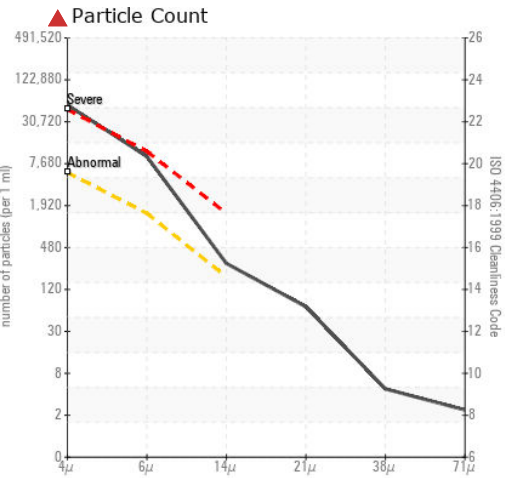
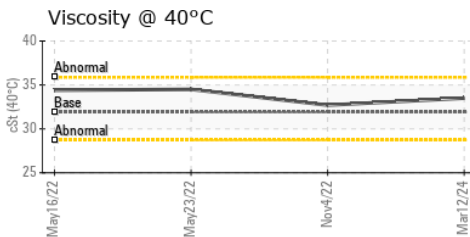
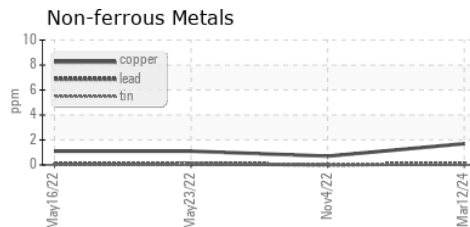
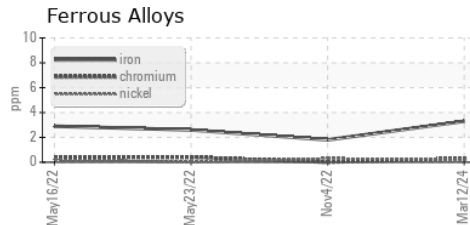
VISUAL	method	limit/base	current	history1	history2
White Metal	scalar	Visual*	NONE	NONE	NONE
Yellow Metal	scalar	Visual*	NONE	NONE	NONE
Precipitate	scalar	Visual*	NONE	NONE	NONE
Silt	scalar	Visual*	NONE	NONE	NONE
Debris	scalar	Visual*	NONE	NONE	NONE
Sand/Dirt	scalar	Visual*	NONE	NONE	NONE
Appearance	scalar	Visual*	NORML	NORML	NORML
Odor	scalar	Visual*	NORML	NORML	NORML
Emulsified Water	scalar	Visual*	>0.1	NEG	NEG
Free Water	scalar	Visual*		NEG	NEG

FLUID PROPERTIES	method	limit/base	current	history1	history2	
Visc @ 40°C	cSt	ASTM D7279(m)	31.9	33.5	32.7	34.5

SAMPLE IMAGES	method	limit/base	current	history1	history2
---------------	--------	------------	---------	----------	----------



## GRAPHS



**Laboratory** : WearCheck - C8-1175 Appleby Line, Burlington, ON L7L 5H9  
**Sample No.** : GFL0107558  
**Lab Number** : 02623084  
**Unique Number** : 5748203  
**Test Package** : MOB 1 ( Additional Tests: PrtCount )

**GFL Environmental - 747 - GMA - Solid Waste**  
 4 Chemin du Tremblay,  
 Boucherville, QC  
 CA J4B 6Z5  
 Contact: Steve Voyer  
 svoyer@matrec.ca

To discuss this sample report, contact Customer Service at 1-800-268-2131.  
 Test denoted (\*) outside scope of accreditation, (m) method modified, (e) tested at external lab.  
 Validity of results and interpretation are based on the sample and information as supplied.