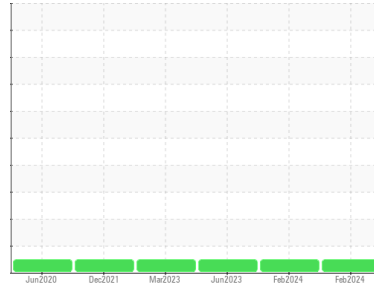




# OIL ANALYSIS REPORT

Sample Rating Trend



**NORMAL**



Machine Id  
**Or562**

Component  
**Rear Differential**

Fluid  
**PETRO CANADA GEARLUBE TOS 80W140 (18 LTR)**

## DIAGNOSIS

### Recommendation

Resample at the next service interval to monitor. Please specify the component make and model with your next sample.

### Wear

All component wear rates are normal.

### Contamination

There is no indication of any contamination in the oil.

### Fluid Condition

The condition of the oil is acceptable for the time in service.

## SAMPLE INFORMATION

	method	limit/base	current	history1	history2
Sample Number	Client Info		<b>GFL0113370</b>	GFL0113374	GFL0056415
Sample Date	Client Info		<b>22 Feb 2024</b>	22 Feb 2024	14 Jun 2023
Machine Age	hrs	Client Info	<b>21863</b>	21863	20535
Oil Age	hrs	Client Info	<b>17698</b>	17698	1554
Oil Changed		Client Info	<b>Filtered</b>	Filtered	Not Changd
Sample Status			<b>NORMAL</b>	NORMAL	NORMAL

## CONTAMINATION

	method	limit/base	current	history1	history2
Water	WC Method	>.2	<b>NEG</b>	NEG	NEG

## WEAR METALS

	method	limit/base	current	history1	history2
Iron	ppm	ASTM D5185(m) >500	<b>24</b>	20	81
Chromium	ppm	ASTM D5185(m) >10	<b>0</b>	0	<1
Nickel	ppm	ASTM D5185(m) >10	<b>&lt;1</b>	<1	2
Titanium	ppm	ASTM D5185(m)	<b>0</b>	0	1
Silver	ppm	ASTM D5185(m)	<b>0</b>	0	0
Aluminum	ppm	ASTM D5185(m) >25	<b>0</b>	<1	7
Lead	ppm	ASTM D5185(m) >25	<b>0</b>	0	<1
Copper	ppm	ASTM D5185(m) >100	<b>3</b>	<1	3
Tin	ppm	ASTM D5185(m) >10	<b>0</b>	0	0
Antimony	ppm	ASTM D5185(m) >5	<b>0</b>	0	<1
Vanadium	ppm	ASTM D5185(m)	<b>0</b>	0	0
Beryllium	ppm	ASTM D5185(m)	<b>0</b>	0	0
Cadmium	ppm	ASTM D5185(m)	<b>0</b>	0	0

## ADDITIVES

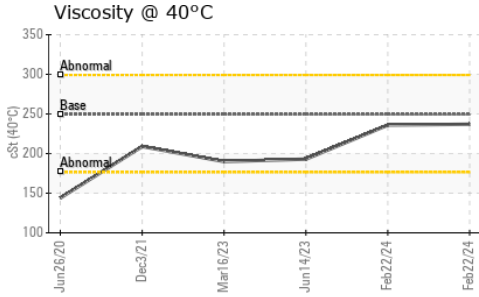
	method	limit/base	current	history1	history2
Boron	ppm	ASTM D5185(m) 170	<b>247</b>	234	209
Barium	ppm	ASTM D5185(m) 4	<b>0</b>	0	0
Molybdenum	ppm	ASTM D5185(m)	<b>&lt;1</b>	<1	7
Manganese	ppm	ASTM D5185(m)	<b>0</b>	0	<1
Magnesium	ppm	ASTM D5185(m) 1.0	<b>1</b>	2	4
Calcium	ppm	ASTM D5185(m) 16	<b>20</b>	26	47
Phosphorus	ppm	ASTM D5185(m) 920	<b>958</b>	946	1087
Zinc	ppm	ASTM D5185(m) 8	<b>12</b>	16	28
Sulfur	ppm	ASTM D5185(m) 1630	<b>16007</b>	15871	17890
Lithium	ppm	ASTM D5185(m)	<b>&lt;1</b>	<1	<1

## CONTAMINANTS

	method	limit/base	current	history1	history2
Silicon	ppm	ASTM D5185(m) >75	<b>2</b>	4	26
Sodium	ppm	ASTM D5185(m)	<b>&lt;1</b>	<1	2
Potassium	ppm	ASTM D5185(m) >20	<b>0</b>	<1	2



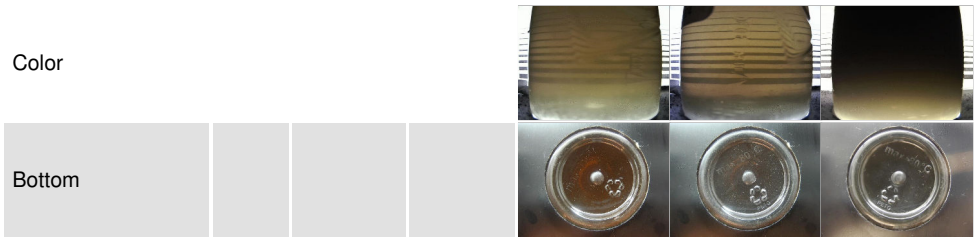
# OIL ANALYSIS REPORT



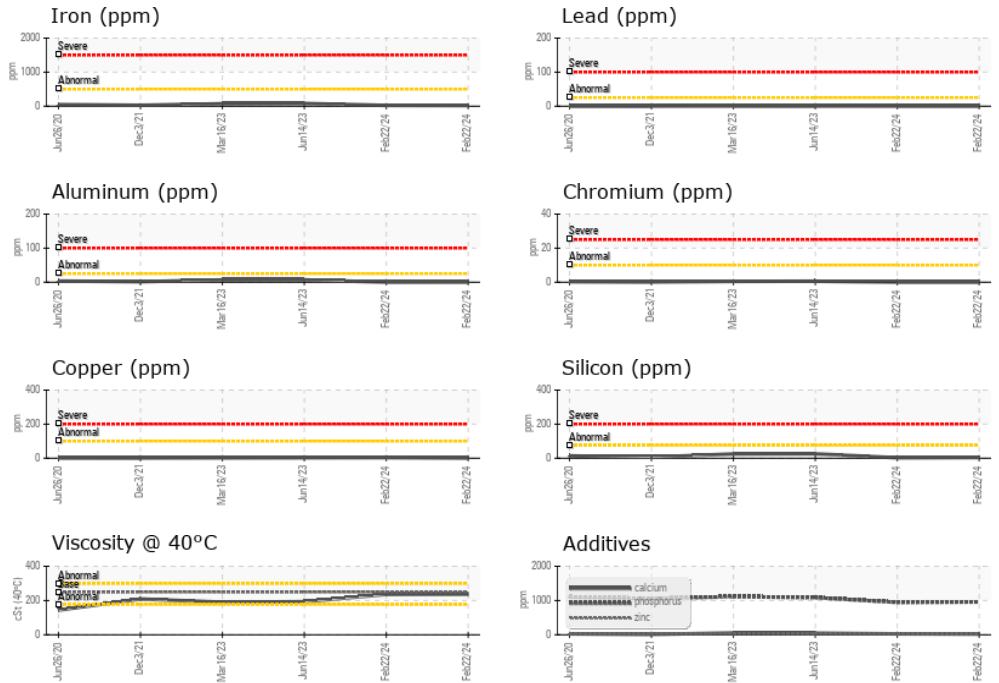
VISUAL	method	limit/base	current	history1	history2
White Metal	scalar	Visual*	NONE	NONE	NONE
Yellow Metal	scalar	Visual*	NONE	NONE	NONE
Precipitate	scalar	Visual*	NONE	NONE	NONE
Silt	scalar	Visual*	NONE	NONE	NONE
Debris	scalar	Visual*	NONE	NONE	NONE
Sand/Dirt	scalar	Visual*	NONE	NONE	NONE
Appearance	scalar	Visual*	NORML	NORML	NORML
Odor	scalar	Visual*	NORML	NORML	NORML
Emulsified Water	scalar	Visual*	>.2	NEG	NEG
Free Water	scalar	Visual*		NEG	NEG

FLUID PROPERTIES	method	limit/base	current	history1	history2	
Visc @ 40°C	cSt	ASTM D7279(m)	249.3	<b>237</b>	236	193

SAMPLE IMAGES	method	limit/base	current	history1	history2
---------------	--------	------------	---------	----------	----------



## GRAPHS



**Laboratory** : WearCheck - C8-1175 Appleby Line, Burlington, ON L7L 5H9  
**Sample No.** : GFL0113370  
**Lab Number** : **02623788**  
**Unique Number** : 5748907  
**Test Package** : MOB 1

**GFL Environmental - 720 - Lafleche - Landfill**  
 17125 Lafleche Road,  
 Moose Creek, ON  
 CA K0C 1W0  
 Contact: Charles Bergeron  
 cbergeron@gflenv.com  
 T: (613)538-4853  
 F:

To discuss this sample report, contact Customer Service at 1-800-268-2131.  
 Test denoted (\*) outside scope of accreditation, (m) method modified, (e) tested at external lab.  
 Validity of results and interpretation are based on the sample and information as supplied.