

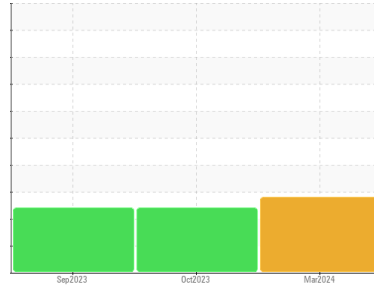


OIL ANALYSIS REPORT

Sample Rating Trend

VISUAL METAL

Machine Id
WL0055
Component
Hydraulic System
Fluid
SAE 10W (--- GAL)



DIAGNOSIS

Recommendation

Nous vous recommandons de vérifier tous les endroits par lesquels des contaminants peuvent pénétrer dans le système. Nous vous recommandons de vérifier la présence de particules métalliques visibles dans l'huile. Nous recommandons le remplacement des filtres de ce composant. Nous vous recommandons d'échantillonner de nouveau dès que possible afin de contrôler la situation. Veuillez préciser la marque et le modèle du composant lors du prochain échantillon. Le contaminant anormal pourrait être dû à une mauvaise technique d'échantillonnage. AVIS DE NON-RESPONSABILITÉ: L'interprétation des résultats est basée sur l'échantillon reçu du client. La provenance de l'échantillon et la méthode d'échantillonnage ne peut être vérifiée.

Wear

Présence d'une faible concentration de métal visible.

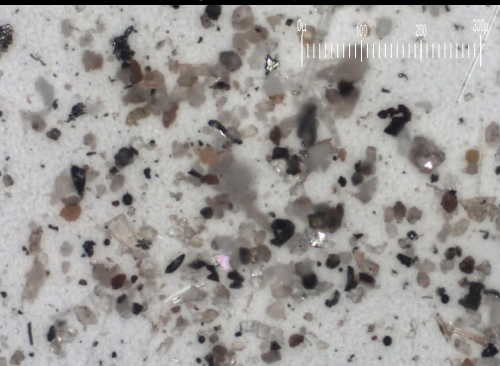
Contamination

Il y a une quantité modérée de particules (de 4 à 14 microns) dans l'huile. Il y a une légère concentration de la saleté et débris visible, présente dans l'huile.

Fluid Condition

l'huile n'est plus en état de service en raison d'une usure anormale et/ou sévère.

Particle Filter (Magn: 100 x)



SAMPLE INFORMATION

	method	limit/base	current	history1	history2
Sample Number	Client Info		GFL0067529	GFL0067473	GFL0067480
Sample Date	Client Info		25 Mar 2024	17 Oct 2023	14 Sep 2023
Machine Age	kms	Client Info	15613	14365	14119
Oil Age	kms	Client Info	0	0	0
Oil Changed	Client Info		N/A	N/A	N/A
Sample Status			ABNORMAL	ABNORMAL	ABNORMAL

CONTAMINATION

	method	limit/base	current	history1	history2
Water	WC Method	>0.1	NEG	NEG	NEG

WEAR METALS

	method	limit/base	current	history1	history2	
Iron	ppm	ASTM D5185(m)	>20	10	17	12
Chromium	ppm	ASTM D5185(m)	>10	1	3	2
Nickel	ppm	ASTM D5185(m)	>10	0	<1	0
Titanium	ppm	ASTM D5185(m)		0	0	<1
Silver	ppm	ASTM D5185(m)		0	<1	0
Aluminum	ppm	ASTM D5185(m)	>10	1	3	2
Lead	ppm	ASTM D5185(m)	>10	0	<1	<1
Copper	ppm	ASTM D5185(m)	>75	<1	2	2
Tin	ppm	ASTM D5185(m)	>10	0	0	0
Antimony	ppm	ASTM D5185(m)		0	0	0
Vanadium	ppm	ASTM D5185(m)		0	0	0
Beryllium	ppm	ASTM D5185(m)		0	0	0
Cadmium	ppm	ASTM D5185(m)		0	0	0

ADDITIVES

	method	limit/base	current	history1	history2	
Boron	ppm	ASTM D5185(m)		1	5	4
Barium	ppm	ASTM D5185(m)		0	0	0
Molybdenum	ppm	ASTM D5185(m)		14	57	54
Manganese	ppm	ASTM D5185(m)		0	0	<1
Magnesium	ppm	ASTM D5185(m)		232	933	906
Calcium	ppm	ASTM D5185(m)		332	1174	1089
Phosphorus	ppm	ASTM D5185(m)		516	1044	1044
Zinc	ppm	ASTM D5185(m)		626	1221	1144
Sulfur	ppm	ASTM D5185(m)		1236	2718	2614
Lithium	ppm	ASTM D5185(m)		<1	<1	<1

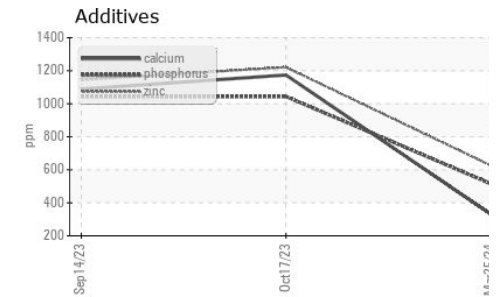
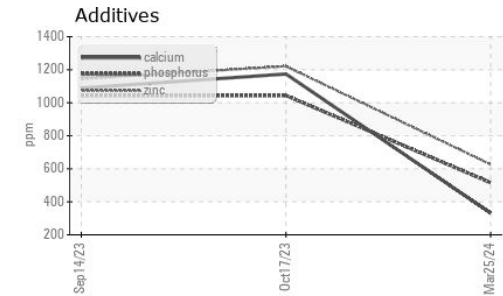
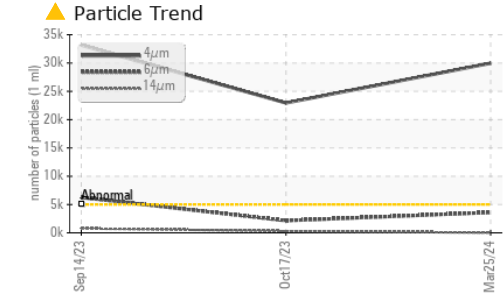
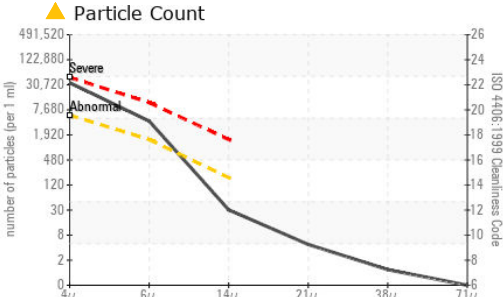
CONTAMINANTS

	method	limit/base	current	history1	history2	
Silicon	ppm	ASTM D5185(m)	>20	2	9	8
Sodium	ppm	ASTM D5185(m)		<1	3	3
Potassium	ppm	ASTM D5185(m)	>20	<1	<1	<1

FLUID CLEANLINESS

	method	limit/base	current	history1	history2
Particles >4µm	ASTM D7647	>5000	▲ 29967	▲ 22945	▲ 33161
Particles >6µm	ASTM D7647	>1300	▲ 3604	● 2154	▲ 6258
Particles >14µm	ASTM D7647	>160	27	● 299	▲ 764
Particles >21µm	ASTM D7647	>40	4	▲ 90	▲ 252
Particles >38µm	ASTM D7647	>10	1	6	10
Particles >71µm	ASTM D7647	>3	0	2	1
Oil Cleanliness	ISO 4406 (c)	>19/17/14	▲ 22/19/12	▲ 22/18/15	▲ 22/20/17

OIL ANALYSIS REPORT



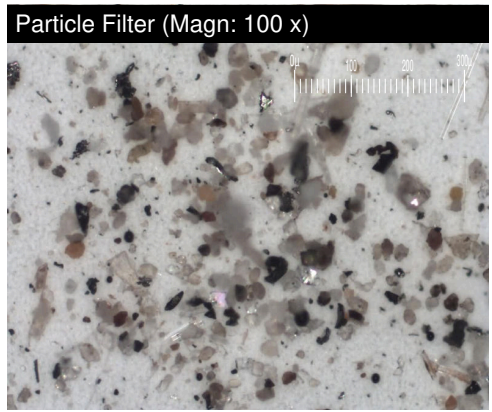
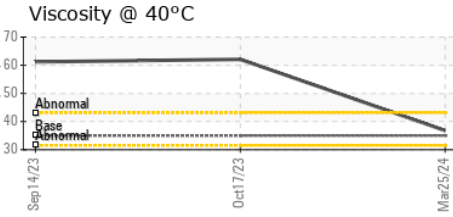
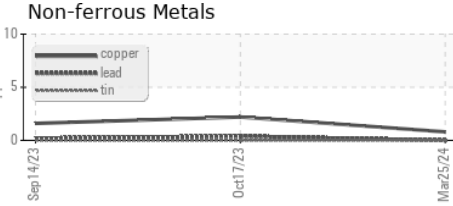
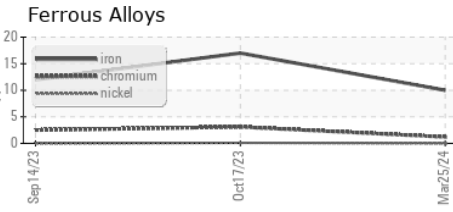
VISUAL	method	limit/base	current	history1	history2
White Metal	scalar	Visual*	NONE	▲ VLITE	NONE
Yellow Metal	scalar	Visual*	NONE	NONE	NONE
Precipitate	scalar	Visual*	NONE	NONE	NONE
Silt	scalar	Visual*	NONE	NONE	NONE
Debris	scalar	Visual*	NONE	▲ LIGHT	NONE
Sand/Dirt	scalar	Visual*	NONE	NONE	NONE
Appearance	scalar	Visual*	NORML	NORML	NORML
Odor	scalar	Visual*	NORML	NORML	NORML
Emulsified Water	scalar	Visual*	>0.1	NEG	NEG
Free Water	scalar	Visual*		NEG	NEG

FLUID PROPERTIES	method	limit/base	current	history1	history2	
Visc @ 40°C	cSt	ASTM D7279(m)	35.0	36.8	▲ 62.1	▲ 61.2

SAMPLE IMAGES	method	limit/base	current	history1	history2
---------------	--------	------------	---------	----------	----------

Color			
Bottom			
PrtFilter		no image	no image

GRAPHS



Laboratory : WearCheck - C8-1175 Appleby Line, Burlington, ON L7L 5H9 GFL Environmental - 743 - Montreal Est CD Processing
Sample No. : GFL0067529 **Received** : 28 Mar 2024 10930 rue Sherbrooke
Lab Number : 02625313 **Tested** : 02 Apr 2024 Montreal, QC
Unique Number : 5750432 **Diagnosed** : 02 Apr 2024 - Kevin Marson CA H1B 1B4
Test Package : MOB 1 (Additional Tests: Bottom, BottomAnalysis, FilterPatch, PrtCount, PrtFilter)
 Contact: Patrick Beaulieu
 patrick.beaulieu@gflenv.com
 To discuss this sample report, contact Customer Service at 1-800-268-2131. T:
 Test denoted (*) outside scope of accreditation, (m) method modified, (e) tested at external lab. F:
 Validity of results and interpretation are based on the sample and information as supplied.