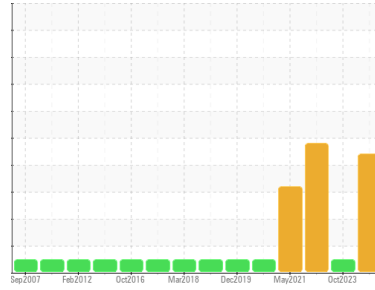


GREASE ANALYSIS

Sample Rating Trend



DIRT



Area

Cranes

Machine Id

Crane - Mid Ship Slew Brg Grease (S/N Sample Tag MA-04002)

Component

Forward Grease

Fluid

PETRO CANADA PRECISION XL EP2 (--- LTR)

DIAGNOSIS

Recommendation

Confirm the source of the grease being utilized for re-greasing. Resample at the next service interval to monitor.

Wear

Aluminum and antimony ppm levels are noted. All other component wear rates are normal.

Grease Condition

Additive levels indicate the addition of a different brand, or type of grease. The condition of the grease is acceptable for the time in service.

Contaminants

Elemental levels of silicon (Si) and aluminum (Al) indicate this is an aluminum-based grease.

SAMPLE INFORMATION

	method	limit/base	current	history1	history2
Sample Number	Client Info		PC	PC	PC0061552
Sample Date	Client Info		20 Mar 2024	04 Oct 2023	12 Aug 2023
Machine Age	hrs	Client Info	0	0	0
Grease Age	hrs	Client Info	0	0	0
Grease Serviced	Client Info		N/A	N/A	N/A
Sample Status			ATTENTION	NORMAL	ABNORMAL

CONTAMINATION

	method	limit/base	current	history1	history2
Water	WC Method	>0.1	NEG	NEG	NEG

WEAR METALS

	method	limit/base	current	history1	history2	
PQ	ASTM D8184*	>200	3600	6310	700	
Iron	ppm	ASTM D5185(m)	>250	534	281	401
Chromium	ppm	ASTM D5185(m)	>10	4	<1	4
Nickel	ppm	ASTM D5185(m)	>5	2	<1	<1
Cadmium	ppm	ASTM D5185(m)		0	0	0
Titanium	ppm	ASTM D5185(m)		3	0	2
Vanadium	ppm	ASTM D5185(m)		0	0	<1
Lead	ppm	ASTM D5185(m)	>25	<1	<1	3
Copper	ppm	ASTM D5185(m)	>75	1	1	1
Tin	ppm	ASTM D5185(m)	>5	1	0	▲ 4
Silver	ppm	ASTM D5185(m)	>5	0	<1	0

ADDITIVES

	method	limit/base	current	history1	history2	
Boron	ppm	ASTM D5185(m)		2	2	2
Magnesium	ppm	ASTM D5185(m)		32	6	28
Manganese	ppm	ASTM D5185(m)		3	4	4
Molybdenum	ppm	ASTM D5185(m)		423	34	230
Phosphorus	ppm	ASTM D5185(m)		51	68	35
Zinc	ppm	ASTM D5185(m)		74	83	50
Antimony	ppm	ASTM D5185(m)		25	13	16

THICKENER/SOAP

	method	limit/base	current	history1	history2	
Aluminum	ppm	ASTM D5185(m)		188	1	162
Barium	ppm	ASTM D5185(m)		2	2	2
Calcium	ppm	ASTM D5185(m)		689	125	560
Sodium	ppm	ASTM D5185(m)		28	57	19
Lithium	ppm	ASTM D5185(m)		181	187	104
Sulfur	ppm	ASTM D5185(m)		980	655	724

CONTAMINANTS

	method	limit/base	current	history1	history2	
Silicon	ppm	ASTM D5185(m)	>150	533	3	▲ 462
Potassium	ppm	ASTM D5185(m)		7	4	4

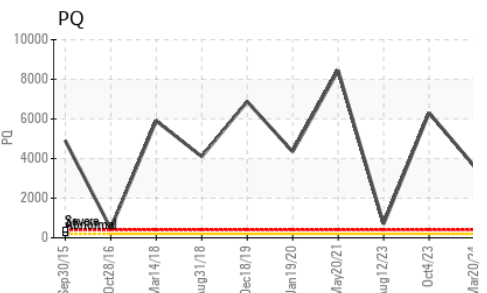
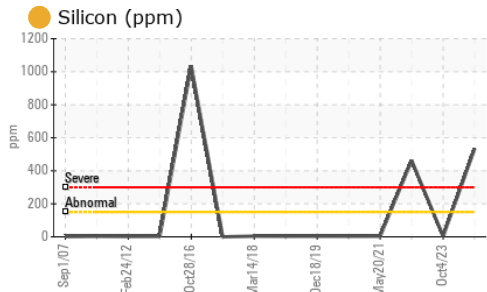
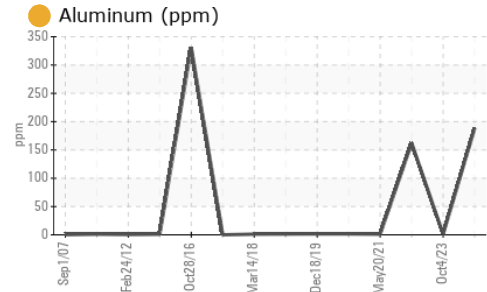
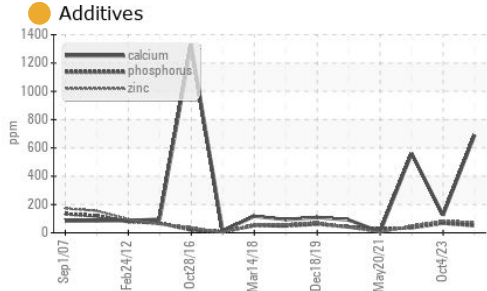
GREASE CONDITION

	method	limit/base	current	history1	history2
Grease Color	Visual*	Brown	Black	Brown	Black
Texture	In-house*	Stringy	Stringy	Short fiber	Stringy
NLGI Consistency	NLGI Scale	SKF Method* 2	2-3	1-2	2

Particle Filter (Magn: 10 x)

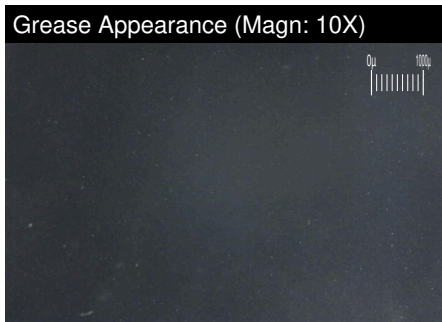
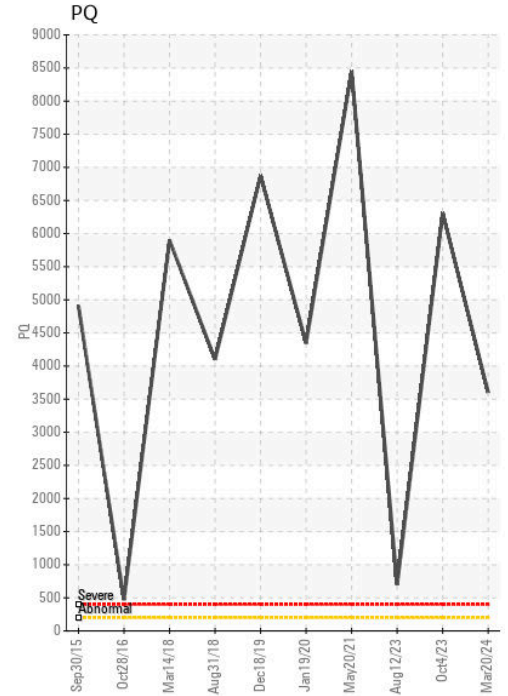
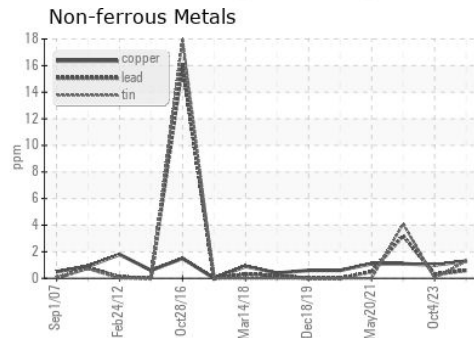
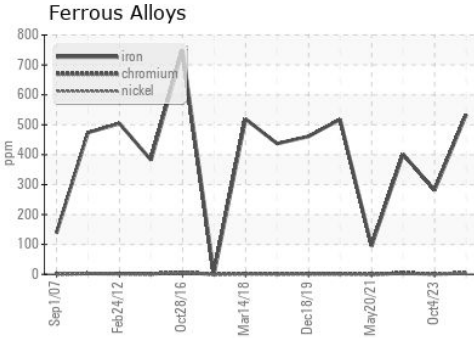


GREASE ANALYSIS



	SAMPLE IMAGES	method	limit/base	current	history1	history2
Color						
Bottom						
PrtFilter						

GRAPHS



ISO 17025:2017
Accredited
Laboratory

Laboratory : WearCheck - C8-1175 Appleby Line, Burlington, ON L7L 5H9
Sample No. : PC
Lab Number : 02626283
Unique Number : 5759415
Test Package : GRS 1 (Additional Tests: BottomAnalysis, PrtCount, PrtFilter)
Received : 02 Apr 2024
Tested : 04 Apr 2024
Diagnosed : 04 Apr 2024 - Bill Quesnel

To discuss this sample report, contact Customer Service at 1-800-268-2131.
 Test denoted (*) outside scope of accreditation, (m) method modified, (e) tested at external lab.
 Validity of results and interpretation are based on the sample and information as supplied.

Suncor - Terra Nova Projects
 Scotia Centre, 235 Water Street
 St. John's, NL
 CA A1C 1B6
 Contact: Josh Hynes
 joshhynes@suncor.com
 T: (709)778-3575
 F: (709)724-2835