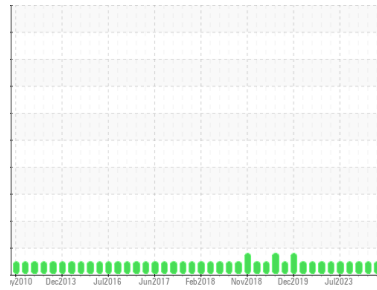


# GREASE ANALYSIS

Sample Rating Trend



**NORMAL**



Area  
**Turret [450267780]**  
Machine Id  
**Turret Swivel #2 - 16 (S/N Sample Tag NC-21603)**  
Component  
**Grease**  
Fluid  
**PETRO CANADA GREASE OG-1 (--- GAL)**

## DIAGNOSIS

### Recommendation

Resample at the next service interval to monitor.

### Wear

All component wear rates are normal.

### Grease Condition

The condition of the grease is acceptable for the time in service.

### Contaminants

There is no indication of any contamination in the grease.

SAMPLE INFORMATION		method	limit/base	current	history1	history2
Sample Number	Client Info			<b>PC0078286</b>	PC	PC
Sample Date	Client Info			<b>01 Apr 2024</b>	18 Mar 2024	23 Jan 2024
Machine Age	days	Client Info		<b>0</b>	0	0
Grease Age	days	Client Info		<b>0</b>	0	0
Grease Serviced	Client Info			<b>N/A</b>	N/A	N/A
Sample Status				<b>NORMAL</b>	NORMAL	NORMAL

CONTAMINATION		method	limit/base	current	history1	history2
Water	WC Method		>0.1	<b>NEG</b>	NEG	NEG

WEAR METALS		method	limit/base	current	history1	history2
PQ		ASTM D8184*	>200	<b>0</b>	0	0
Iron	ppm	ASTM D5185(m)	>250	<b>27</b>	24	7
Chromium	ppm	ASTM D5185(m)	>10	<b>&lt;1</b>	0	0
Nickel	ppm	ASTM D5185(m)	>5	<b>&lt;1</b>	<1	<1
Cadmium	ppm	ASTM D5185(m)		<b>0</b>	0	0
Titanium	ppm	ASTM D5185(m)		<b>0</b>	0	0
Vanadium	ppm	ASTM D5185(m)		<b>0</b>	0	0
Lead	ppm	ASTM D5185(m)	>25	<b>0</b>	0	0
Copper	ppm	ASTM D5185(m)	>75	<b>0</b>	<1	0
Tin	ppm	ASTM D5185(m)	>5	<b>0</b>	0	0
Silver	ppm	ASTM D5185(m)	>5	<b>0</b>	0	0

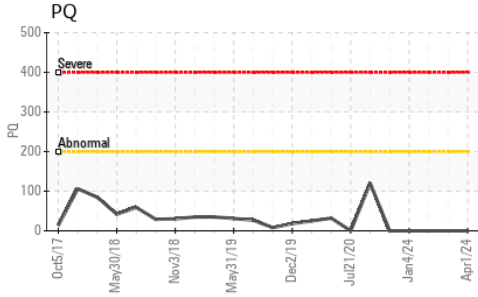
ADDITIVES		method	limit/base	current	history1	history2
Boron	ppm	ASTM D5185(m)		<b>113</b>	113	146
Magnesium	ppm	ASTM D5185(m)		<b>4</b>	4	14
Manganese	ppm	ASTM D5185(m)		<b>&lt;1</b>	0	0
Molybdenum	ppm	ASTM D5185(m)		<b>0</b>	0	0
Phosphorus	ppm	ASTM D5185(m)		<b>11</b>	9	12
Zinc	ppm	ASTM D5185(m)		<b>25</b>	21	31
Antimony	ppm	ASTM D5185(m)		<b>0</b>	0	0

THICKENER/SOAP		method	limit/base	current	history1	history2
Aluminum	ppm	ASTM D5185(m)		<b>1</b>	1	3
Barium	ppm	ASTM D5185(m)		<b>0</b>	0	8
Calcium	ppm	ASTM D5185(m)		<b>2684</b>	2735	3657
Sodium	ppm	ASTM D5185(m)		<b>5</b>	5	10
Lithium	ppm	ASTM D5185(m)		<b>66</b>	52	18
Sulfur	ppm	ASTM D5185(m)		<b>657</b>	630	880

CONTAMINANTS		method	limit/base	current	history1	history2
Silicon	ppm	ASTM D5185(m)	>150	<b>73</b>	65	24
Potassium	ppm	ASTM D5185(m)		<b>2</b>	2	3

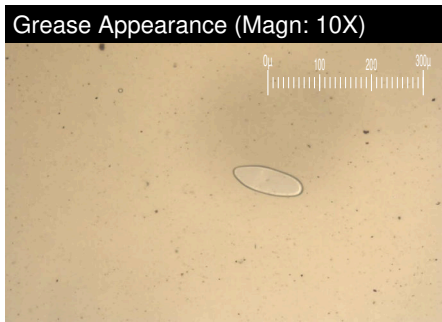
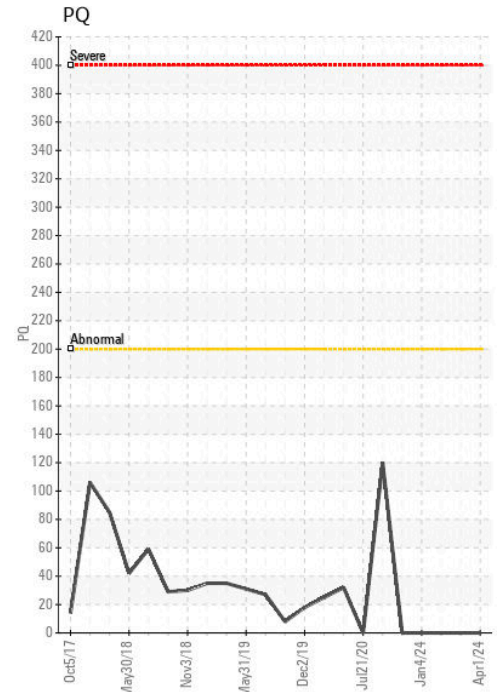
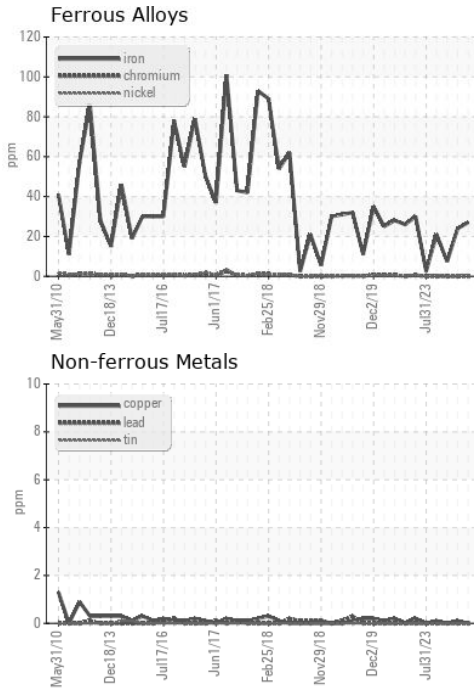
GREASE CONDITION		method	limit/base	current	history1	history2
Grease Color	Visual*	Tan		<b>Tan</b>	Brown	Tan
Texture	In-house*	Buttery		<b>Buttery</b>	Buttery	Buttery
NLGI Consistency	NLGI Scale	SKF Method*	1	<b>1-2</b>	1	1-2

# GREASE ANALYSIS



SAMPLE IMAGES	method	limit/base	current	history1	history2
Color					
Bottom					
PrtFilter					

## GRAPHS



**CALA**  
ISO 17025:2017  
Accredited  
Laboratory

**Laboratory** : WearCheck - C8-1175 Appleby Line, Burlington, ON L7L 5H9  
**Sample No.** : PC0078286 **Received** : 29 Apr 2024  
**Lab Number** : **02632165** **Tested** : 02 May 2024  
**Unique Number** : 5773318 **Diagnosed** : 02 May 2024 - Bill Quesnel  
**Test Package** : GRS 1 ( Additional Tests: BottomAnalysis )

**Suncor - Terra Nova Projects**  
 Scotia Centre, 235 Water Street  
 St. John's, NL  
 CA A1C 1B6  
 Contact: Josh Hynes  
 joshynes@suncor.com  
 T: (709)778-3575  
 F: (709)724-2835

To discuss this sample report, contact Customer Service at 1-800-268-2131.  
 Test denoted (\*) outside scope of accreditation, (m) method modified, (e) tested at external lab.  
 Validity of results and interpretation are based on the sample and information as supplied.