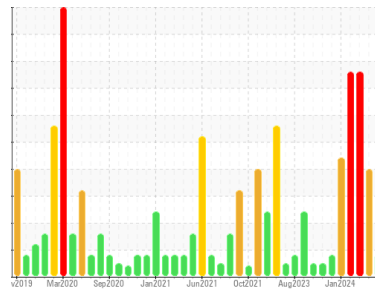


FUEL REPORT

Sample Rating Trend



ISO



Area

CRANES

Machine Id

Crane - Fwd Fuel Sample (S/N Sample Tag: MA-04003)

Component

Diesel Fuel

Fluid

No.2 DIESEL FUEL (LOW-SULPHUR) (--- GAL)

DIAGNOSIS

Recommendation

Laboratory test indicate that this fuel is suitable for use and meets all test requirements. We advise that you filter this fluid before use. We recommend you service the filters on this component. Resample at the next service interval to monitor.

Contaminants

There is a light amount of silt (particulates < 14 microns in size) present in the fuel. The water content is negligible.

Fuel Condition

All laboratory tests indicate that this sample meets specifications for No.2 ultra-low-sulfur diesel fuel (US EPA/CGSB-3.517-3 type B).

SAMPLE INFORMATION

method	limit/base	current	history1	history2
Sample Number	Client Info	PC	PC	PC
Sample Date	Client Info	06 Apr 2024	31 Mar 2024	07 Feb 2024
Machine Age	hrs	0	0	0
Sample Status		ATTENTION	SEVERE	SEVERE

PHYSICAL PROPERTIES

method	limit/base	current	history1	history2		
Specific Gravity	ASTM D1298*	0.839	0.849	0.849	0.851	
Fuel Color	text	Visual Screen*	Yellow	Yellow	Yellow	
Visc @ 40°C	cSt	ASTM D7279(m)	3.0	2.9	3	
Pensky-Martens Flash Point	°C	ASTM D7215*	52	62	63	64.7

SULFUR CONTENT

method	limit/base	current	history1	history2		
Sulfur	ppm	ASTM D5185(m)	250	8	7	8

DISTILLATION

method	limit/base	current	history1	history2		
Initial Boiling Point	°C	ASTM D2887*	165	173	174	176
5% Distillation Point	°C	ASTM D2887*		197	199	203
10% Distill Point	°C	ASTM D2887*	201	209	211	215
15% Distillation Point	°C	ASTM D2887*		218	219	223
20% Distill Point	°C	ASTM D2887*	216	227	228	232
30% Distill Point	°C	ASTM D2887*	230	242	243	246
40% Distill Point	°C	ASTM D2887*	243	256	256	258
50% Distill Point	°C	ASTM D2887*	255	269	269	270
60% Distill Point	°C	ASTM D2887*	267	283	283	283
70% Distill Point	°C	ASTM D2887*	280	297	297	296
80% Distill Point	°C	ASTM D2887*	295	313	312	310
85% Distillation Point	°C	ASTM D2887*		323	323	321
90% Distill Point	°C	ASTM D2887*	310	334	334	331
95% Distillation Point	°C	ASTM D2887*		351	352	348
Final Boiling Point	°C	ASTM D2887*	341	367	377	363

IGNITION QUALITY

method	limit/base	current	history1	history2	
API Gravity	ASTM D1298*	37.7	35	35	34
Cetane Index	ASTM D4737*	<40.0	47	47	47

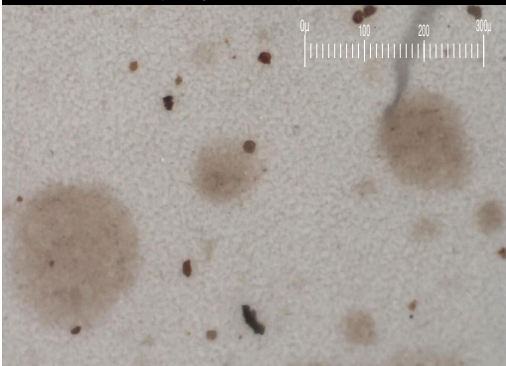
CONTAMINANTS

method	limit/base	current	history1	history2		
Silicon	ppm	ASTM D5185(m)	<1.0	0	0	0
Sodium	ppm	ASTM D5185(m)	<0.1	<1	<1	<1
Potassium	ppm	ASTM D5185(m)	<0.1	<1	0	0
Water	%	ASTM D6304*	<0.05	0.010	0.005	0.006
ppm Water	ppm	ASTM D6304*	<500	103	58	70

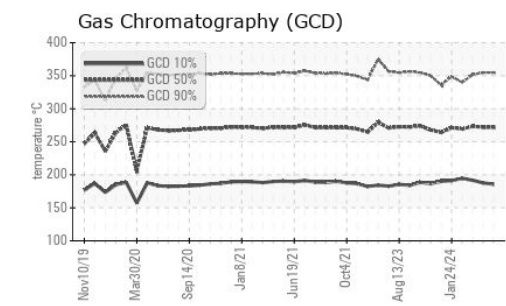
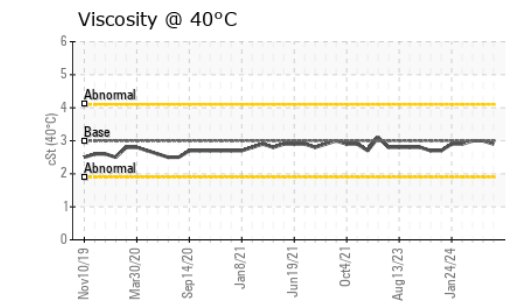
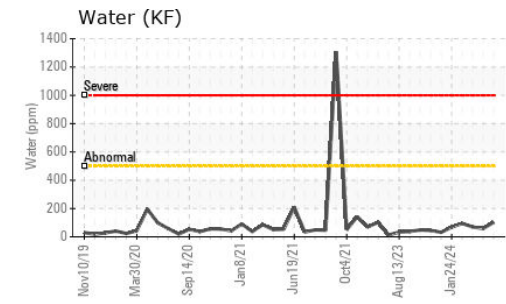
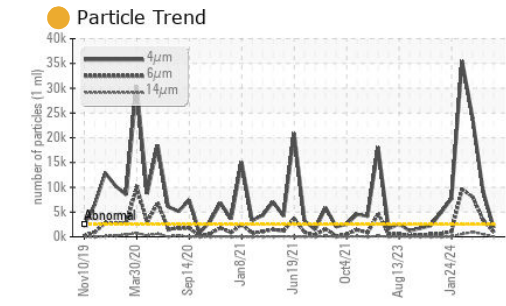
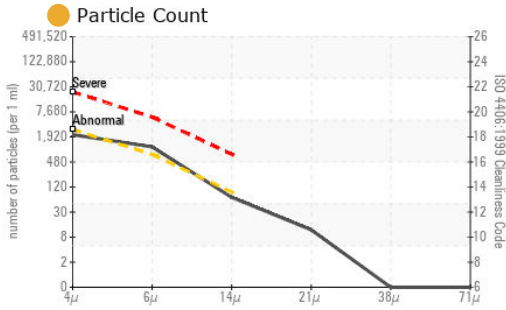
FLUID CLEANLINESS

method	limit/base	current	history1	history2	
Particles >4µm	ASTM D7647	>2500	1900	▲ 9241	▲ 24039
Particles >6µm	ASTM D7647	>640	970	▲ 3401	▲ 8059
Particles >14µm	ASTM D7647	>80	60	▲ 520	▲ 960
Particles >21µm	ASTM D7647	>20	10	▲ 213	▲ 223
Particles >38µm	ASTM D7647	>4	0	▲ 24	5
Particles >71µm	ASTM D7647	>3	0	1	0
Oil Cleanliness	ISO 4406 (c)	>18/16/13	18/17/13	▲ 20/19/16	▲ 22/20/17

Particle Filter (Magn: 100 x)



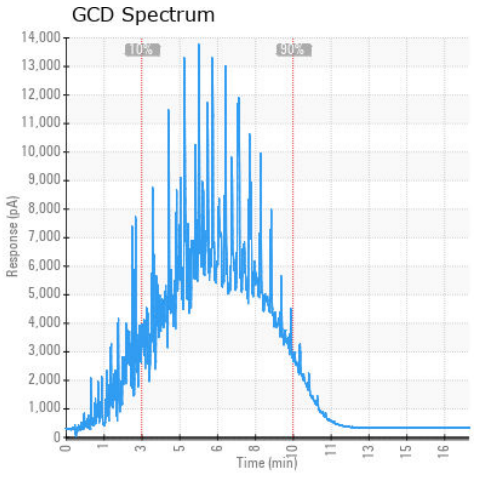
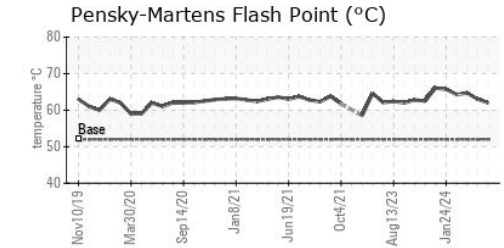
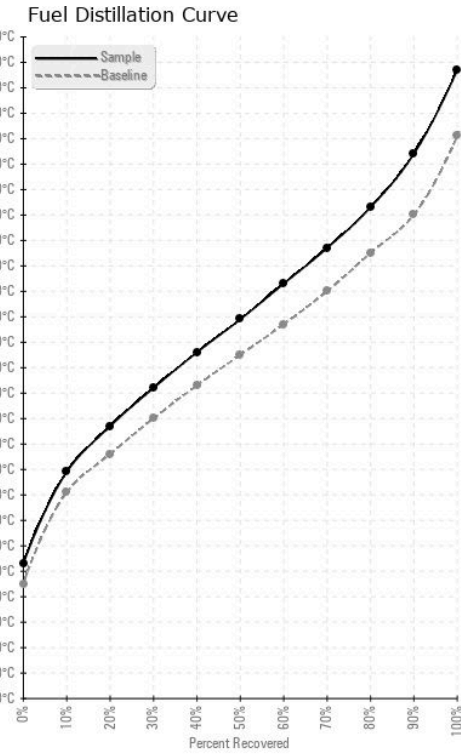
FUEL REPORT



HEAVY METALS		method	limit/base	current	history1	history2
Aluminum	ppm	ASTM D5185(m)	<0.1	0	0	0
Nickel	ppm	ASTM D5185(m)	<0.1	0	0	0
Lead	ppm	ASTM D5185(m)	<0.1	0	0	0
Vanadium	ppm	ASTM D5185(m)	<0.1	0	0	0
Iron	ppm	ASTM D5185(m)	<0.1	0	0	0
Calcium	ppm	ASTM D5185(m)	<0.1	0	0	0
Magnesium	ppm	ASTM D5185(m)	<0.1	0	0	0
Phosphorus	ppm	ASTM D5185(m)	<0.1	<1	<1	<1
Zinc	ppm	ASTM D5185(m)	<0.1	0	0	0

SAMPLE IMAGES		method	limit/base	current	history1	history2
Color						
Bottom						
PrtFilter					no image	no image

GRAPHS



Laboratory : WearCheck - C8-1175 Appleby Line, Burlington, ON L7L 5H9
Sample No. : PC **Received** : 10 May 2024
Lab Number : 02634788 **Tested** : 15 May 2024
Unique Number : 5775941 **Diagnosed** : 15 May 2024 - Kevin Marson
Test Package : FUEL (Additional Tests: CC Flash, PrtCount, PrtFilter, PRTFILTERPREP)

Suncor - Terra Nova Projects
 Scotia Centre, 235 Water Street
 St. John's, NL
 CA A1C 1B6
 Contact: Josh Hynes
 joshynes@suncor.com
 T: (709)778-3575
 F: (709)724-2835

To discuss this sample report, contact Customer Service at 1-800-268-2131.
 Test denoted (*) outside scope of accreditation, (m) method modified, (e) tested at external lab.
 Validity of results and interpretation are based on the sample and information as supplied.