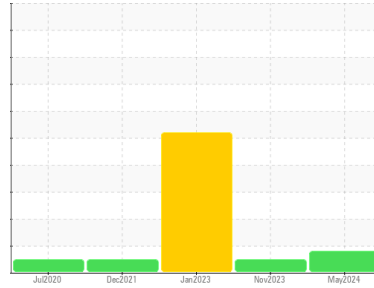




OIL ANALYSIS REPORT

Sample Rating Trend



WEAR



Machine Id
9257
 Component
Transmission (Auto)
 Fluid
CASTROL TRANSYND (--- GAL)

DIAGNOSIS

Recommendation

Nous vous recommandons de vidanger le fluide de ce composant si vous ne l'avez pas déjà fait. Nous vous recommandons d'échantillonner de nouveau dès que possible afin de contrôler la situation.

Wear

Usure des engrenages. Le bas indice ferreux (PQ) indique que l'usure ferreuse est due à de la corrosion.

Contamination

Il n'y a aucun indice de contamination dans le fluide.

Fluid Condition

le fluide n'est plus en état de service en raison d'une usure anormale et/ou sévère.

SAMPLE INFORMATION

	method	limit/base	current	history1	history2
Sample Number	Client Info		GFL0120721	GFL0096464	GFL0067361
Sample Date	Client Info		08 May 2024	22 Nov 2023	09 Jan 2023
Machine Age	kms	Client Info	120732	101319	16989
Oil Age	kms	Client Info	1200	0	0
Oil Changed	Client Info		N/A	N/A	N/A
Sample Status			ABNORMAL	NORMAL	SEVERE

CONTAMINATION

	method	limit/base	current	history1	history2
Water	WC Method	>0.1	NEG	NEG	NEG

WEAR METALS

	method	limit/base	current	history1	history2
PQ	ASTM D8184*	>75	10	---	2
Iron	ppm	ASTM D5185(m) >220	▲ 227	181	198
Chromium	ppm	ASTM D5185(m) >2	<1	0	<1
Nickel	ppm	ASTM D5185(m) >5	<1	0	<1
Titanium	ppm	ASTM D5185(m)	0	0	<1
Silver	ppm	ASTM D5185(m) >5	0	<1	0
Aluminum	ppm	ASTM D5185(m) >75	18	19	40
Lead	ppm	ASTM D5185(m) >95	23	29	▲ 106
Copper	ppm	ASTM D5185(m) >60	12	13	34
Tin	ppm	ASTM D5185(m) >10	<1	1	4
Antimony	ppm	ASTM D5185(m) >2	0	0	<1
Vanadium	ppm	ASTM D5185(m)	0	0	0
Beryllium	ppm	ASTM D5185(m)	0	0	0
Cadmium	ppm	ASTM D5185(m)	0	0	0

ADDITIVES

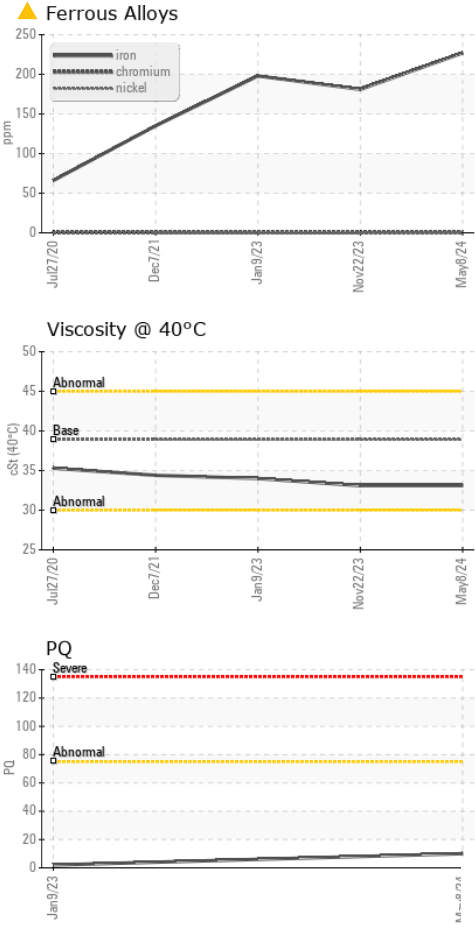
	method	limit/base	current	history1	history2
Boron	ppm	ASTM D5185(m) 150	83	92	181
Barium	ppm	ASTM D5185(m) 0	0	0	0
Molybdenum	ppm	ASTM D5185(m) 0	0	0	0
Manganese	ppm	ASTM D5185(m)	1	<1	2
Magnesium	ppm	ASTM D5185(m) 0	3	2	1
Calcium	ppm	ASTM D5185(m) 40	125	122	130
Phosphorus	ppm	ASTM D5185(m) 320	241	246	454
Zinc	ppm	ASTM D5185(m) 5	8	7	9
Sulfur	ppm	ASTM D5185(m) 1050	1533	1613	2197
Lithium	ppm	ASTM D5185(m)	<1	<1	<1

CONTAMINANTS

	method	limit/base	current	history1	history2
Silicon	ppm	ASTM D5185(m) >25	21	17	16
Sodium	ppm	ASTM D5185(m)	8	6	14
Potassium	ppm	ASTM D5185(m) >20	2	1	2



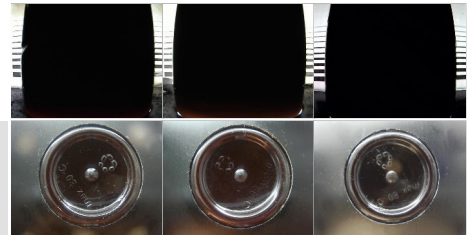
OIL ANALYSIS REPORT



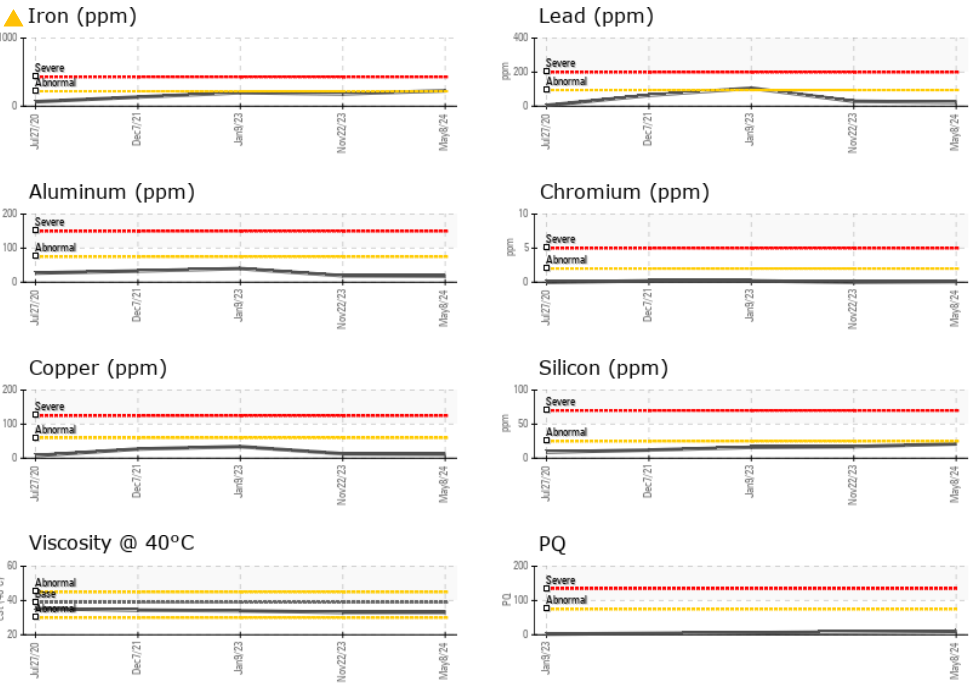
VISUAL	method	limit/base	current	history1	history2
White Metal	scalar	Visual*	NONE	NONE	NONE
Yellow Metal	scalar	Visual*	NONE	NONE	NONE
Precipitate	scalar	Visual*	NONE	NONE	NONE
Silt	scalar	Visual*	NONE	NONE	NONE
Debris	scalar	Visual*	NONE	NONE	NONE
Sand/Dirt	scalar	Visual*	NONE	NONE	NONE
Appearance	scalar	Visual*	NORML	NORML	NORML
Odor	scalar	Visual*	NORML	NORML	NORML
Emulsified Water	scalar	Visual*	>0.1	NEG	NEG
Free Water	scalar	Visual*		NEG	NEG

FLUID PROPERTIES	method	limit/base	current	history1	history2
Visc @ 40°C	cSt	ASTM D7279(m)	38.9	33.1	34.0

SAMPLE IMAGES	method	limit/base	current	history1	history2
Color					
Bottom					



GRAPHS



Laboratory : WearCheck - C8-1175 Appleby Line, Burlington, ON L7L 5H9
Sample No. : GFL0120721
Lab Number : 02635749
Unique Number : 5776902
Test Package : MOB 1 (Additional Tests: PQ)
Received : 15 May 2024
Tested : 15 May 2024
Diagnosed : 16 May 2024 - Kevin Marson

GFL Environmental - 747 - GMA - Solid Waste
 4 Chemin du Tremblay,
 Boucherville, QC
 CA J4B 6Z5
 Contact: Steve Voyer
 svoyer@matrec.ca

To discuss this sample report, contact Customer Service at 1-800-268-2131.
 Test denoted (*) outside scope of accreditation, (m) method modified, (e) tested at external lab.
 Validity of results and interpretation are based on the sample and information as supplied.