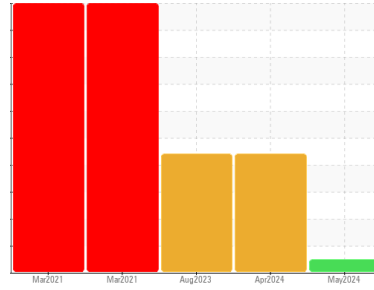




# OIL ANALYSIS REPORT

Sample Rating Trend



**NORMAL**



Machine Id

**OR343**

Component

**Transmission (Auto)**

Fluid

**PETRO CANADA HYDREX XV ALL SEASON HYDRAULIC OIL (149 LTR)**

## DIAGNOSIS

### Recommendation

Resample at the next service interval to monitor.

### Wear

All component wear rates are normal.

### Contamination

There is no indication of any contamination in the fluid.

### Fluid Condition

The condition of the fluid is acceptable for the time in service.

## SAMPLE INFORMATION

	method	limit/base	current	history1	history2
Sample Number	Client Info		<b>GFL0124643</b>	GFL0113342	GFL0092258
Sample Date	Client Info		<b>30 May 2024</b>	15 Apr 2024	21 Aug 2023
Machine Age	hrs	Client Info	<b>16058</b>	16058	15462
Oil Age	hrs	Client Info	<b>12385</b>	12981	500
Oil Changed	Client Info		<b>N/A</b>	Oil Added	Not Changd
Sample Status			<b>NORMAL</b>	ATTENTION	ABNORMAL

## CONTAMINATION

	method	limit/base	current	history1	history2
Water	WC Method	>0.1	<b>NEG</b>	NEG	NEG

## WEAR METALS

	method	limit/base	current	history1	history2
Iron	ppm	ASTM D5185(m) >160	<b>45</b>	35	9
Chromium	ppm	ASTM D5185(m) >5	<b>0</b>	0	0
Nickel	ppm	ASTM D5185(m) >5	<b>0</b>	0	0
Titanium	ppm	ASTM D5185(m)	<b>&lt;1</b>	0	0
Silver	ppm	ASTM D5185(m) >5	<b>0</b>	0	0
Aluminum	ppm	ASTM D5185(m) >50	<b>&lt;1</b>	0	<1
Lead	ppm	ASTM D5185(m) >50	<b>2</b>	2	2
Copper	ppm	ASTM D5185(m) >225	<b>4</b>	4	4
Tin	ppm	ASTM D5185(m) >10	<b>0</b>	0	0
Antimony	ppm	ASTM D5185(m)	<b>0</b>	0	0
Vanadium	ppm	ASTM D5185(m)	<b>0</b>	0	0
Beryllium	ppm	ASTM D5185(m)	<b>0</b>	0	0
Cadmium	ppm	ASTM D5185(m)	<b>0</b>	0	0

## ADDITIVES

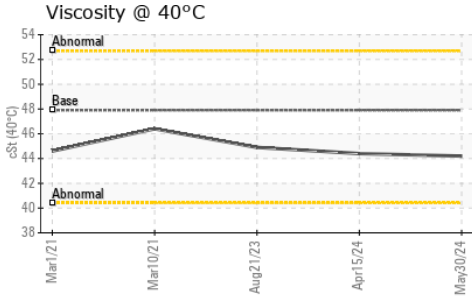
	method	limit/base	current	history1	history2
Boron	ppm	ASTM D5185(m) 0	<b>7</b>	8	11
Barium	ppm	ASTM D5185(m) 0	<b>0</b>	0	0
Molybdenum	ppm	ASTM D5185(m) 0	<b>0</b>	0	<1
Manganese	ppm	ASTM D5185(m) 1	<b>&lt;1</b>	<1	0
Magnesium	ppm	ASTM D5185(m) 0	<b>7</b>	7	6
Calcium	ppm	ASTM D5185(m) 100	<b>356</b>	354	372
Phosphorus	ppm	ASTM D5185(m) 670	<b>629</b>	645	691
Zinc	ppm	ASTM D5185(m) 850	<b>814</b>	803	818
Sulfur	ppm	ASTM D5185(m) 1600	<b>1508</b>	1581	1534
Lithium	ppm	ASTM D5185(m)	<b>&lt;1</b>	<1	<1

## CONTAMINANTS

	method	limit/base	current	history1	history2
Silicon	ppm	ASTM D5185(m) >20	<b>0</b>	0	1
Sodium	ppm	ASTM D5185(m)	<b>4</b>	4	5
Potassium	ppm	ASTM D5185(m) >20	<b>1</b>	<1	1



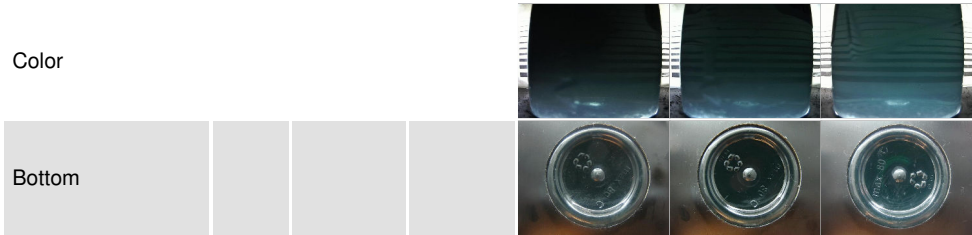
# OIL ANALYSIS REPORT



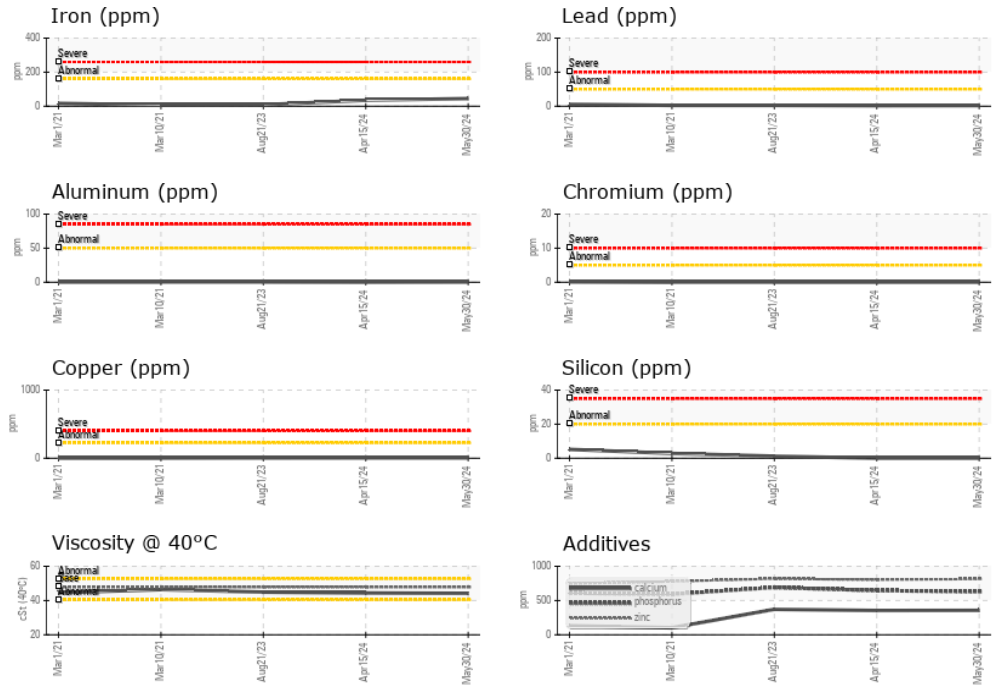
VISUAL	method	limit/base	current	history1	history2
White Metal	scalar	Visual*	NONE	NONE	NONE
Yellow Metal	scalar	Visual*	NONE	NONE	NONE
Precipitate	scalar	Visual*	NONE	VLITE	NONE
Silt	scalar	Visual*	NONE	NONE	NONE
Debris	scalar	Visual*	NONE	NONE	VLITE
Sand/Dirt	scalar	Visual*	NONE	NONE	NONE
Appearance	scalar	Visual*	NORML	NORML	NORML
Odor	scalar	Visual*	NORML	NORML	NORML
Emulsified Water	scalar	Visual*	>0.1	NEG	NEG
Free Water	scalar	Visual*		NEG	NEG

FLUID PROPERTIES	method	limit/base	current	history1	history2	
Visc @ 40°C	cSt	ASTM D7279(m)	47.9	<b>44.2</b>	44.4	44.9

SAMPLE IMAGES	method	limit/base	current	history1	history2
---------------	--------	------------	---------	----------	----------



## GRAPHS



**Laboratory** : WearCheck - C8-1175 Appleby Line, Burlington, ON L7L 5H9  
**Sample No.** : GFL0124643  
**Lab Number** : **02639173**  
**Unique Number** : 5788335  
**Test Package** : MOB 1

**GFL Environmental - 720 - Lafleche - Landfill**  
 17125 Lafleche Road,  
 Moose Creek, ON  
 CA K0C 1W0  
 Contact: Charles Bergeron  
 cbergeron@gflenv.com  
 T: (613)538-4853  
 F:

To discuss this sample report, contact Customer Service at 1-800-268-2131.  
 Test denoted (\*) outside scope of accreditation, (m) method modified, (e) tested at external lab.  
 Validity of results and interpretation are based on the sample and information as supplied.