

Machine Id
PRESS #5 LOG OVEN (S/N 14122)
Component
Hydraulic System
Fluid
HOUGHTON COSMOLUBRIC HF122 ISO 46 (50 GAL)

DIAGNOSIS

Recommendation

We advise that you check for visible metal particles in the oil. We recommend an early resample to monitor this condition.

Wear

Light concentration of visible metal present.

Contamination

The system cleanliness is acceptable for your target ISO 4406 cleanliness code. The system and fluid cleanliness is acceptable. NOTE: An increase in the particle count is noted.

Fluid Condition

The AN level is acceptable for this fluid.

SAMPLE INFORMATION

method	limit/base	current	history1	history2
Sample Number	Client Info	PC0081053	PC0043676	PC0010137
Sample Date	Client Info	11 Jun 2024	23 Jun 2021	21 Apr 2020
Machine Age	yrs	Client Info	0	0
Oil Age	yrs	Client Info	0	0
Oil Changed	Client Info	N/A	N/A	N/A
Sample Status		MARGINAL	MARGINAL	NORMAL

CONTAMINATION

method	limit/base	current	history1	history2
Water	WC Method >0.05	NEG	NEG	NEG

WEAR METALS

method	limit/base	current	history1	history2	
Iron	ppm	ASTM D5185(m) >20	3	2	1
Chromium	ppm	ASTM D5185(m) >20	<1	<1	<1
Nickel	ppm	ASTM D5185(m) >20	0	<1	<1
Titanium	ppm	ASTM D5185(m)	0	0	0
Silver	ppm	ASTM D5185(m)	0	0	0
Aluminum	ppm	ASTM D5185(m) >20	<1	<1	0
Lead	ppm	ASTM D5185(m) >20	0	0	0
Copper	ppm	ASTM D5185(m) >20	1	<1	<1
Tin	ppm	ASTM D5185(m) >20	<1	<1	<1
Antimony	ppm	ASTM D5185(m)	0	0	<1
Vanadium	ppm	ASTM D5185(m)	0	0	0
Beryllium	ppm	ASTM D5185(m)	0	0	0
Cadmium	ppm	ASTM D5185(m)	0	0	0

ADDITIVES

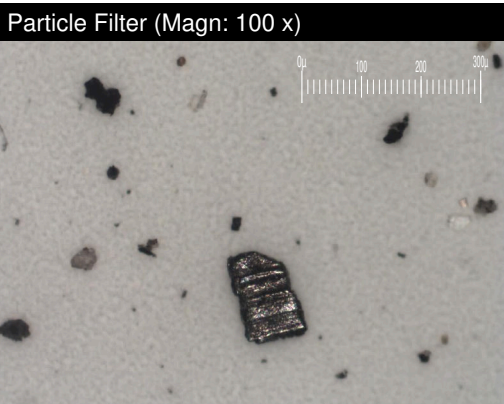
method	limit/base	current	history1	history2	
Boron	ppm	ASTM D5185(m)	1	<1	<1
Barium	ppm	ASTM D5185(m)	0	0	0
Molybdenum	ppm	ASTM D5185(m)	0	0	0
Manganese	ppm	ASTM D5185(m)	<1	<1	<1
Magnesium	ppm	ASTM D5185(m)	2	1	<1
Calcium	ppm	ASTM D5185(m)	2	2	<1
Phosphorus	ppm	ASTM D5185(m)	148	157	152
Zinc	ppm	ASTM D5185(m)	15	13	10
Sulfur	ppm	ASTM D5185(m)	653	692	717
Lithium	ppm	ASTM D5185(m)	<1	<1	<1

CONTAMINANTS

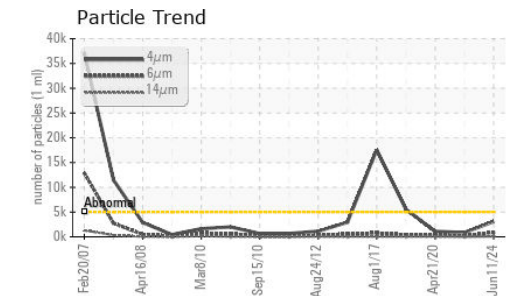
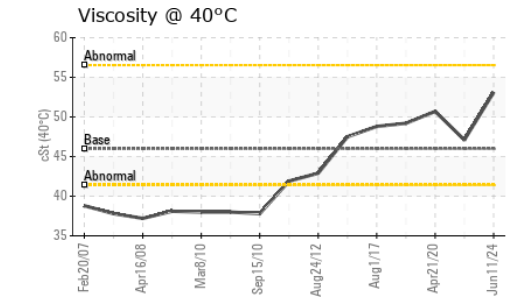
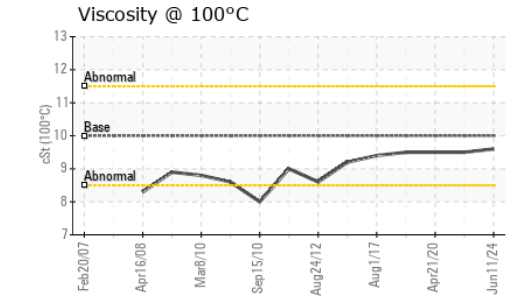
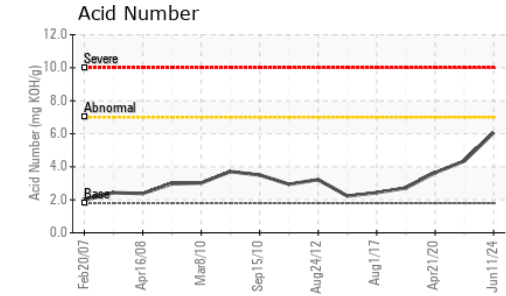
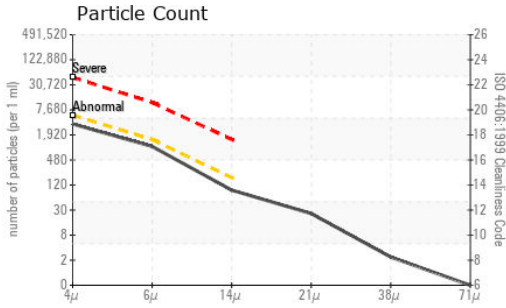
method	limit/base	current	history1	history2	
Silicon	ppm	ASTM D5185(m) >15	0	1	<1
Sodium	ppm	ASTM D5185(m)	1	<1	0
Potassium	ppm	ASTM D5185(m) >20	1	1	<1

FLUID CLEANLINESS

method	limit/base	current	history1	history2
Particles >4µm	ASTM D7647 >5000	3077	854	1114
Particles >6µm	ASTM D7647 >1300	889	181	291
Particles >14µm	ASTM D7647 >160	80	13	22
Particles >21µm	ASTM D7647 >40	22	4	6
Particles >38µm	ASTM D7647 >10	2	0	0
Particles >71µm	ASTM D7647 >3	0	0	0
Oil Cleanliness	ISO 4406 (c) >19/17/14	19/17/13	17/15/11	17/15/12



OIL ANALYSIS REPORT



Laboratory : WearCheck - C8-1175 Appleby Line, Burlington, ON L7L 5H9
Sample No. : PC0081053
Lab Number : 02641134
Unique Number : 5798673
Test Package : IND 2 (Additional Tests: Bottom, BottomAnalysis, FilterPatch, KV100, PrtFilter, TAN Monitor)

EXTRUDEX ALUMINIUM
 411 CHRISLEA ROAD
 WOODBRIDGE, ON
 CA L4L 8N4
 Contact: Daljeet Munday
 dmunday@extrudex.com
 T: (416)745-4444
 F: (416)745-0925

To discuss this sample report, contact Customer Service at 1-800-268-2131.
 Test denoted (*) outside scope of accreditation, (m) method modified, (e) tested at external lab.
 Validity of results and interpretation are based on the sample and information as supplied.

FLUID DEGRADATION		method	limit/base	current	history1	history2
Acid Number (AN)	mg KOH/g	ASTM D974*	1.8	6.06	▲ 4.35	3.64

VISUAL		method	limit/base	current	history1	history2
White Metal	scalar	Visual*	NONE	▲ VLITE	NONE	NONE
Yellow Metal	scalar	Visual*	NONE	NONE	NONE	NONE
Precipitate	scalar	Visual*	NONE	NONE	NONE	NONE
Silt	scalar	Visual*	NONE	NONE	NONE	NONE
Debris	scalar	Visual*	NONE	NONE	NONE	NONE
Sand/Dirt	scalar	Visual*	NONE	NONE	NONE	NONE
Appearance	scalar	Visual*	NORML	NORML	NORML	NORML
Odor	scalar	Visual*	NORML	NORML	NORML	NORML
Emulsified Water	scalar	Visual*	>0.05	NEG	NEG	NEG
Free Water	scalar	Visual*		NEG	NEG	NEG

FLUID PROPERTIES		method	limit/base	current	history1	history2
Visc @ 40°C	cSt	ASTM D7279(m)	46	53.1	47.1	50.7
Visc @ 100°C	cSt	ASTM D7279(m)	10	9.6	9.5	9.5
Viscosity Index (VI)	Scale	ASTM D2270*	190	167	191	174

SAMPLE IMAGES		method	limit/base	current	history1	history2
Color						
Bottom						
PrtFilter						