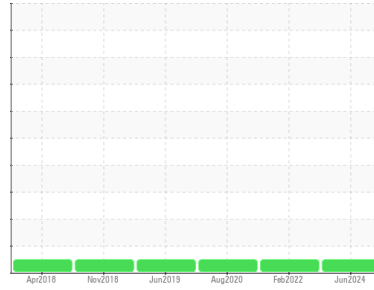


OIL ANALYSIS REPORT

Sample Rating Trend



NORMAL



Area
65524
Machine Id
P41
Component
Hydraulic System
Fluid
PETRO CANADA PURITY FG HYDRAULIC AW 68 (500 LTR)

DIAGNOSIS

Recommendation

Confirm the source of the lubricant being utilized for top-up/fill. Resample at the next service interval to monitor. The fluid was specified as PETRO CANADA PURITY FG HYDRAULIC AW 68, however, a fluid match indicates that this fluid is ISO 68 Environmental Oil. Please confirm the oil type and grade on your next sample.

Wear

All component wear rates are normal.

Contamination

The system cleanliness is acceptable for your target ISO 4406 cleanliness code. The system and fluid cleanliness is acceptable.

Fluid Condition

Additive levels indicate the addition of a different brand, or type of oil. The AN level is acceptable for this fluid. The condition of the oil is suitable for further service.

SAMPLE INFORMATION		method	limit/base	current	history1	history2
Sample Number	Client Info			PC0087669	PC0030042	PC410591
Sample Date	Client Info			12 Jun 2024	06 Feb 2022	28 Aug 2020
Machine Age	hrs	Client Info		0	0	8000
Oil Age	hrs	Client Info		0	0	0
Oil Changed	Client Info			N/A	N/A	N/A
Sample Status				NORMAL	NORMAL	NORMAL

CONTAMINATION		method	limit/base	current	history1	history2
Water	WC Method		>0.05	NEG	NEG	NEG

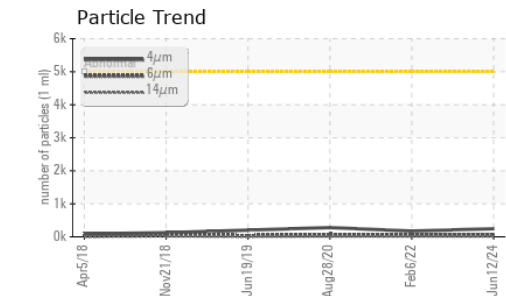
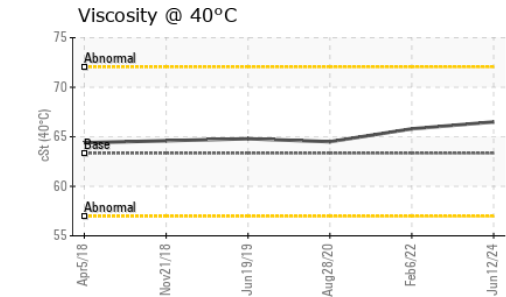
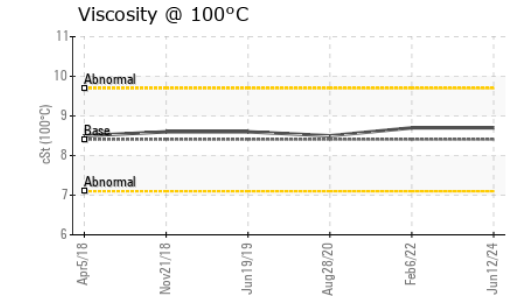
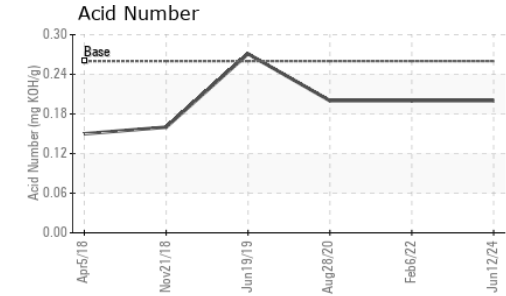
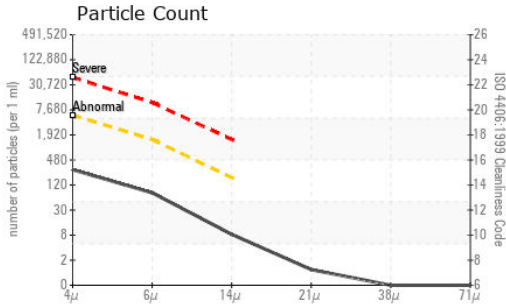
WEAR METALS		method	limit/base	current	history1	history2
Iron	ppm	ASTM D5185(m)	>20	<1	0	0
Chromium	ppm	ASTM D5185(m)	>20	0	0	0
Nickel	ppm	ASTM D5185(m)	>20	0	0	<1
Titanium	ppm	ASTM D5185(m)		0	0	0
Silver	ppm	ASTM D5185(m)		0	0	0
Aluminum	ppm	ASTM D5185(m)	>20	0	0	0
Lead	ppm	ASTM D5185(m)	>20	0	0	0
Copper	ppm	ASTM D5185(m)	>20	<1	<1	<1
Tin	ppm	ASTM D5185(m)	>20	0	0	0
Antimony	ppm	ASTM D5185(m)		0	0	<1
Vanadium	ppm	ASTM D5185(m)		0	0	0
Beryllium	ppm	ASTM D5185(m)		0	0	0
Cadmium	ppm	ASTM D5185(m)		0	0	0

ADDITIVES		method	limit/base	current	history1	history2
Boron	ppm	ASTM D5185(m)		<1	<1	<1
Barium	ppm	ASTM D5185(m)		0	0	0
Molybdenum	ppm	ASTM D5185(m)		0	0	0
Manganese	ppm	ASTM D5185(m)		0	0	0
Magnesium	ppm	ASTM D5185(m)		<1	0	<1
Calcium	ppm	ASTM D5185(m)		18	<1	<1
Phosphorus	ppm	ASTM D5185(m)		478	426	275
Zinc	ppm	ASTM D5185(m)		4	2	2
Sulfur	ppm	ASTM D5185(m)		1092	400	313
Lithium	ppm	ASTM D5185(m)		<1	<1	<1

CONTAMINANTS		method	limit/base	current	history1	history2
Silicon	ppm	ASTM D5185(m)	>15	9	<1	<1
Sodium	ppm	ASTM D5185(m)		<1	0	0
Potassium	ppm	ASTM D5185(m)	>20	<1	<1	<1

FLUID CLEANLINESS		method	limit/base	current	history1	history2
Particles >4µm		ASTM D7647	>5000	247	174	281
Particles >6µm		ASTM D7647	>1300	69	62	71
Particles >14µm		ASTM D7647	>160	7	10	11
Particles >21µm		ASTM D7647	>40	1	4	3
Particles >38µm		ASTM D7647	>10	0	0	0
Particles >71µm		ASTM D7647	>3	0	0	0
Oil Cleanliness		ISO 4406 (c)	>19/17/14	15/13/10	15/13/10	15/13/11

OIL ANALYSIS REPORT

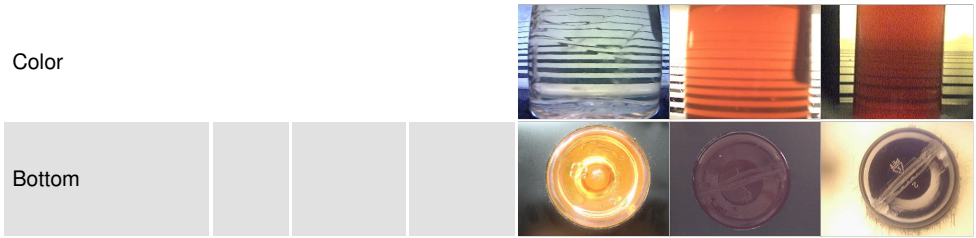


FLUID DEGRADATION		method	limit/base	current	history1	history2
Acid Number (AN)	mg KOH/g	ASTM D974*	0.26	0.20	0.20	0.20

VISUAL		method	limit/base	current	history1	history2
White Metal	scalar	Visual*	NONE	NONE	NONE	NONE
Yellow Metal	scalar	Visual*	NONE	NONE	NONE	NONE
Precipitate	scalar	Visual*	NONE	NONE	NONE	NONE
Silt	scalar	Visual*	NONE	NONE	NONE	NONE
Debris	scalar	Visual*	NONE	NONE	NONE	NONE
Sand/Dirt	scalar	Visual*	NONE	NONE	NONE	NONE
Appearance	scalar	Visual*	NORML	NORML	NORML	NORML
Odor	scalar	Visual*	NORML	NORML	NORML	NORML
Emulsified Water	scalar	Visual*	>0.05	NEG	NEG	NEG
Free Water	scalar	Visual*		NEG	NEG	NEG

FLUID PROPERTIES		method	limit/base	current	history1	history2
Visc @ 40°C	cSt	ASTM D7279(m)	63.34	66.5	65.8	64.5
Visc @ 100°C	cSt	ASTM D7279(m)	8.409	8.7	8.7	8.5
Viscosity Index (VI)	Scale	ASTM D2270*	102	102	104	101

SAMPLE IMAGES



Color

Bottom



Laboratory : WearCheck - C8-1175 Appleby Line, Burlington, ON L7L 5H9
Sample No. : PC0087669
Lab Number : **02641711**
Unique Number : 5799250
Test Package : IND 2 (Additional Tests: KV100, VI)
Received : 13 Jun 2024
Tested : 14 Jun 2024
Diagnosed : 14 Jun 2024 - Kevin Marson

North America IML Container
 2625, Route 344
 St. Placide, QC
 CA J0V 2B0
 Contact: Corinna Bouchard
 cbouchard@iml.ca
 T: (450)258-3130
 F: (450)258-3345

To discuss this sample report, contact Customer Service at 1-800-268-2131.
 Test denoted (*) outside scope of accreditation, (m) method modified, (e) tested at external lab.
 Validity of results and interpretation are based on the sample and information as supplied.