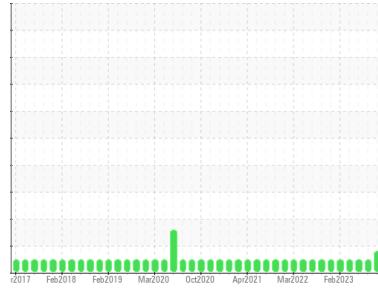


# OIL ANALYSIS REPORT

Area  
**TEAM 15**  
Machine Id  
**156125 (S/N STEAMING VESSEL)**  
Component  
**Gearbox**  
Fluid  
**PETRO CANADA ENDURATEX SYNTHETIC EP 220 (7 GAL)**

Sample Rating Trend



**ADDITIVES**



**DIAGNOSIS**

- Recommendation**  
Confirm the source of the lubricant being utilized for top-up/fill. Resample at the next service interval to monitor.
- Wear**  
All component wear rates are normal.
- Contamination**  
There is no indication of any contamination in the oil.
- Fluid Condition**  
Additive levels indicate the addition of a different brand, or type of oil. The AN level is acceptable for this fluid. The condition of the oil is suitable for further service.

SAMPLE INFORMATION		method	limit/base	current	history1	history2
Sample Number	Client Info			<b>PC0078841</b>	PC0077093	PC0074789
Sample Date	Client Info			<b>05 Jun 2024</b>	14 Jan 2024	25 Oct 2023
Machine Age	mths	Client Info		<b>0</b>	0	0
Oil Age	mths	Client Info		<b>0</b>	0	0
Oil Changed	Client Info			<b>N/A</b>	N/A	N/A
Sample Status				<b>ATTENTION</b>	NORMAL	NORMAL

CONTAMINATION		method	limit/base	current	history1	history2
Water	WC Method		>0.2	<b>NEG</b>	NEG	NEG

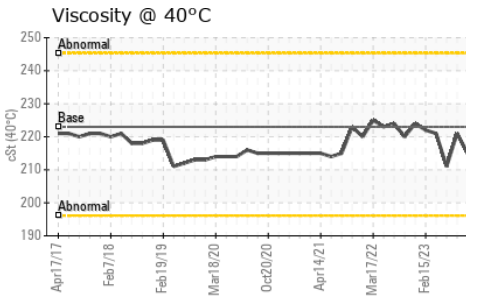
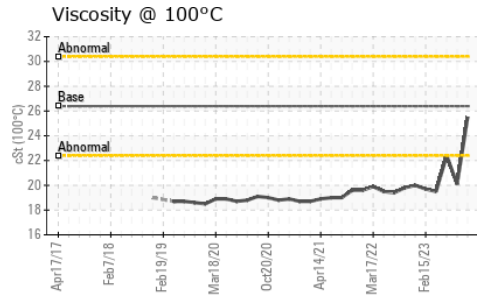
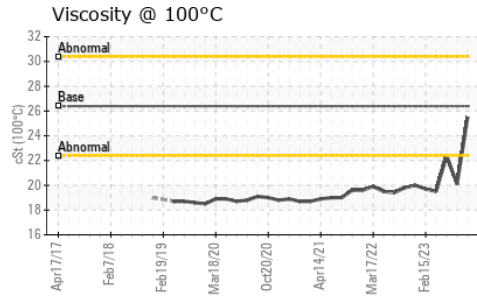
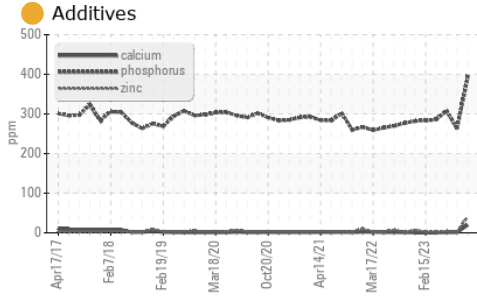
WEAR METALS		method	limit/base	current	history1	history2
Iron	ppm	ASTM D5185(m)	>200	<b>14</b>	7	<1
Chromium	ppm	ASTM D5185(m)	>15	<b>0</b>	0	0
Nickel	ppm	ASTM D5185(m)	>15	<b>0</b>	<1	<1
Titanium	ppm	ASTM D5185(m)		<b>0</b>	0	0
Silver	ppm	ASTM D5185(m)		<b>0</b>	0	<1
Aluminum	ppm	ASTM D5185(m)	>25	<b>8</b>	<1	0
Lead	ppm	ASTM D5185(m)	>100	<b>0</b>	0	<1
Copper	ppm	ASTM D5185(m)	>200	<b>&lt;1</b>	<1	6
Tin	ppm	ASTM D5185(m)	>25	<b>0</b>	0	0
Antimony	ppm	ASTM D5185(m)	>5	<b>0</b>	0	0
Vanadium	ppm	ASTM D5185(m)		<b>0</b>	0	0
Beryllium	ppm	ASTM D5185(m)		<b>0</b>	0	0
Cadmium	ppm	ASTM D5185(m)		<b>0</b>	0	0

ADDITIVES		method	limit/base	current	history1	history2
Boron	ppm	ASTM D5185(m)	33	<b>21</b>	57	38
Barium	ppm	ASTM D5185(m)	5	<b>0</b>	0	<1
Molybdenum	ppm	ASTM D5185(m)		<b>0</b>	0	0
Manganese	ppm	ASTM D5185(m)		<b>0</b>	0	0
Magnesium	ppm	ASTM D5185(m)	5	<b>&lt;1</b>	<1	0
Calcium	ppm	ASTM D5185(m)	5	<b>20</b>	<1	<1
Phosphorus	ppm	ASTM D5185(m)	437	<b>392</b>	264	308
Zinc	ppm	ASTM D5185(m)	5	<b>40</b>	2	4
Sulfur	ppm	ASTM D5185(m)	5000	<b>4678</b>	5689	4661
Lithium	ppm	ASTM D5185(m)		<b>&lt;1</b>	<1	<1

CONTAMINANTS		method	limit/base	current	history1	history2
Silicon	ppm	ASTM D5185(m)	>50	<b>&lt;1</b>	3	2
Sodium	ppm	ASTM D5185(m)		<b>3</b>	3	2
Potassium	ppm	ASTM D5185(m)	>20	<b>2</b>	<1	0

FLUID DEGRADATION		method	limit/base	current	history1	history2
Acid Number (AN)	mg KOH/g	ASTM D974*	0.7	<b>0.71</b>	0.63	---

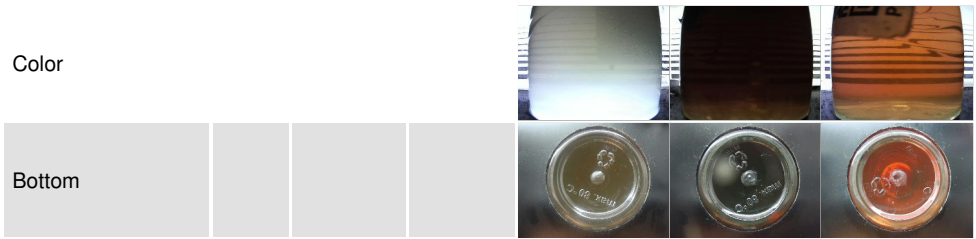
# OIL ANALYSIS REPORT



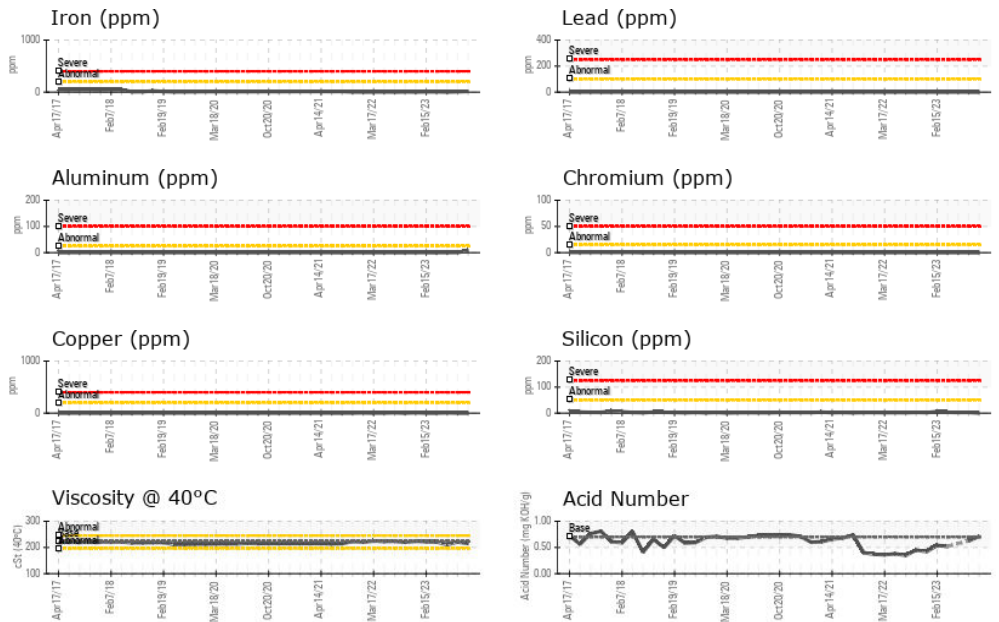
PARAMETER	method	limit/base	current	history1	history2
White Metal	scalar	Visual*	NONE	NONE	NONE
Yellow Metal	scalar	Visual*	NONE	NONE	NONE
Precipitate	scalar	Visual*	NONE	NONE	NONE
Silt	scalar	Visual*	NONE	NONE	NONE
Debris	scalar	Visual*	NONE	NONE	VLITE
Sand/Dirt	scalar	Visual*	NONE	NONE	NONE
Appearance	scalar	Visual*	NORML	NORML	NORML
Odor	scalar	Visual*	NORML	NORML	NORML
Emulsified Water	scalar	Visual*	>0.2	NEG	NEG
Free Water	scalar	Visual*		NEG	NEG

FLUID PROPERTIES	method	limit/base	current	history1	history2
Visc @ 40°C	cSt	ASTM D7279(m)	223	215	221
Visc @ 100°C	cSt	ASTM D7279(m)	26.39	25.5	20.1
Viscosity Index (VI)	Scale	ASTM D2270*	151	150	104

## SAMPLE IMAGES



## GRAPHS



**CALA**  
ISO 17025:2017  
Accredited  
Laboratory

**Laboratory** : WearCheck - C8-1175 Appleby Line, Burlington, ON L7L 5H9  
**Sample No.** : PC0078841  
**Lab Number** : 02641818  
**Unique Number** : 5799357  
**Test Package** : MOB 2 ( Additional Tests: KV100, TAN Man, VI )

**Received** : 13 Jun 2024  
**Tested** : 19 Jun 2024  
**Diagnosed** : 19 Jun 2024 - Kevin Marson

**Dryden Fibre**  
 Box 3001, 1 Duke Street  
 Dryden, ON  
 CA P8N 2Z7

Contact: Adebukola Adekanye  
 aadekanye@drydenfibre.ca

To discuss this sample report, contact Customer Service at 1-800-268-2131.  
 Test denoted (\*) outside scope of accreditation, (m) method modified, (e) tested at external lab.  
 Validity of results and interpretation are based on the sample and information as supplied.

T: (807)223-9950  
 F: (807)223-9176