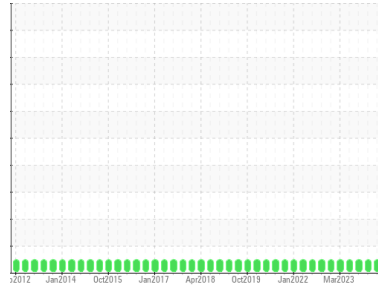


OIL ANALYSIS REPORT

Area
TEAM 3
Machine Id
165250
Component
Gearbox
Fluid
PETRO CANADA ENDURATEX EP 220 (40 GAL)

Sample Rating Trend



DIAGNOSIS

Recommendation
Resample at the next service interval to monitor.

Wear
All component wear rates are normal.

Contamination
There is no indication of any contamination in the oil.

Fluid Condition
The AN level is acceptable for this fluid. The condition of the oil is suitable for further service.

SAMPLE INFORMATION

method	limit/base	current	history1	history2
Sample Number	Client Info	PC0078810	PC0076994	PC0077094
Sample Date	Client Info	13 Jun 2024	28 Mar 2024	13 Jan 2024
Machine Age	mths Client Info	0	0	0
Oil Age	mths Client Info	0	0	0
Oil Changed	Client Info	N/A	N/A	N/A
Sample Status		NORMAL	NORMAL	NORMAL

CONTAMINATION

method	limit/base	current	history1	history2
Water	WC Method >0.2	NEG	NEG	NEG

WEAR METALS

method	limit/base	current	history1	history2
Iron	ppm ASTM D5185(m) >100	8	8	8
Chromium	ppm ASTM D5185(m)	0	0	0
Nickel	ppm ASTM D5185(m)	<1	0	0
Titanium	ppm ASTM D5185(m)	0	0	0
Silver	ppm ASTM D5185(m)	0	0	0
Aluminum	ppm ASTM D5185(m)	<1	0	<1
Lead	ppm ASTM D5185(m) >15	0	0	<1
Copper	ppm ASTM D5185(m) >35	<1	<1	<1
Tin	ppm ASTM D5185(m)	0	0	0
Antimony	ppm ASTM D5185(m)	0	0	0
Vanadium	ppm ASTM D5185(m)	0	0	0
Beryllium	ppm ASTM D5185(m)	0	0	0
Cadmium	ppm ASTM D5185(m)	0	0	0

ADDITIVES

method	limit/base	current	history1	history2
Boron	ppm ASTM D5185(m) 60	46	62	66
Barium	ppm ASTM D5185(m) 0	0	0	0
Molybdenum	ppm ASTM D5185(m) 0	0	0	0
Manganese	ppm ASTM D5185(m) 0	0	0	0
Magnesium	ppm ASTM D5185(m) 0	<1	<1	<1
Calcium	ppm ASTM D5185(m) 0	3	4	4
Phosphorus	ppm ASTM D5185(m) 270	217	232	242
Zinc	ppm ASTM D5185(m) 0	2	2	1
Sulfur	ppm ASTM D5185(m) 11200	5398	5096	5421
Lithium	ppm ASTM D5185(m)	<1	<1	<1

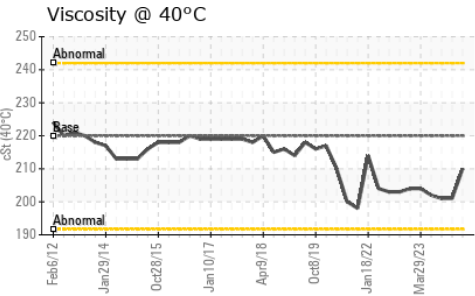
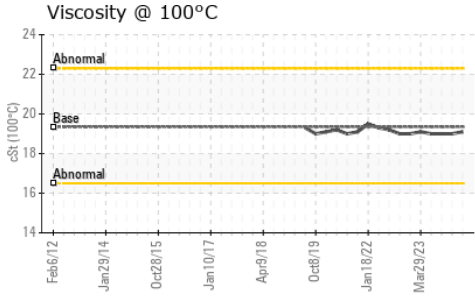
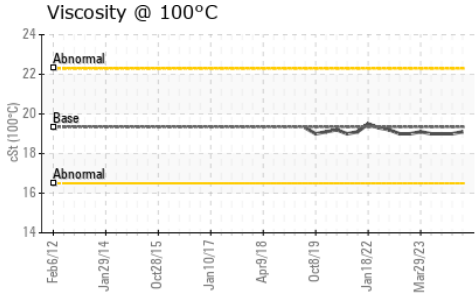
CONTAMINANTS

method	limit/base	current	history1	history2
Silicon	ppm ASTM D5185(m) >50	2	2	3
Sodium	ppm ASTM D5185(m)	0	0	0
Potassium	ppm ASTM D5185(m) >20	<1	<1	<1

FLUID DEGRADATION

method	limit/base	current	history1	history2
Acid Number (AN)	mg KOH/g ASTM D974* 0.40	0.42	0.39	0.42

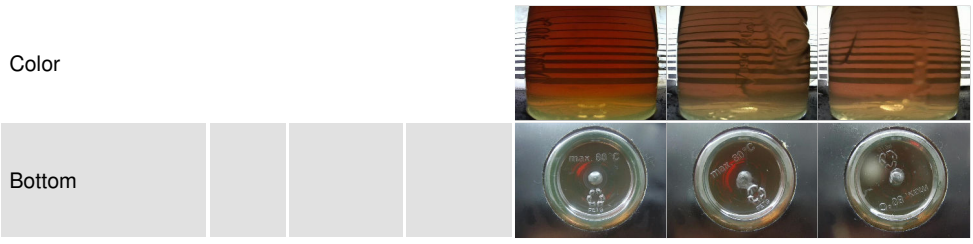
OIL ANALYSIS REPORT



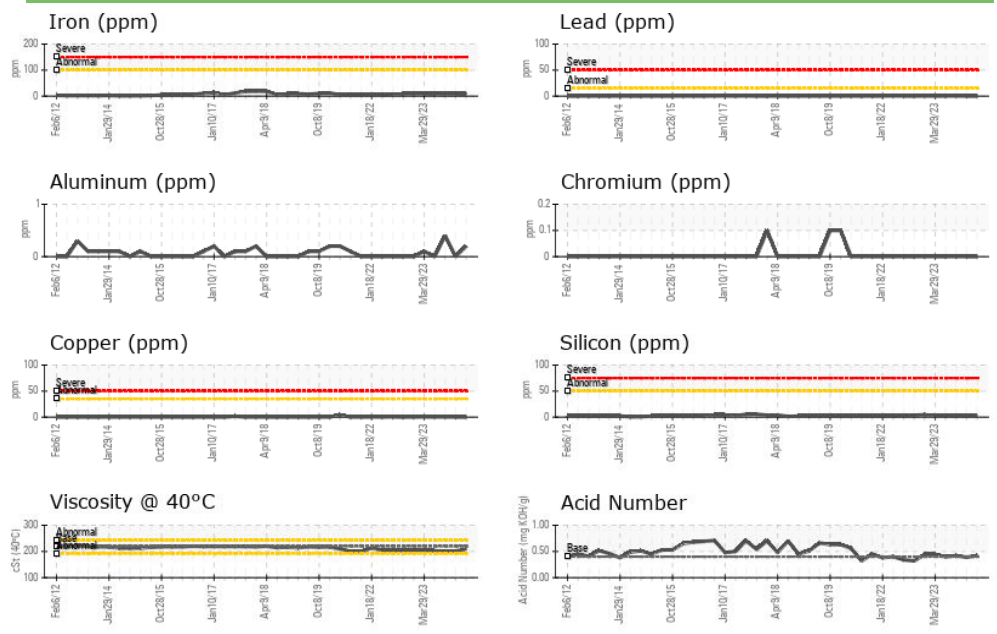
VISUAL	method	limit/base	current	history1	history2
White Metal	scalar	Visual*	NONE	NONE	NONE
Yellow Metal	scalar	Visual*	NONE	NONE	NONE
Precipitate	scalar	Visual*	NONE	NONE	NONE
Silt	scalar	Visual*	NONE	NONE	NONE
Debris	scalar	Visual*	NONE	NONE	NONE
Sand/Dirt	scalar	Visual*	NONE	NONE	NONE
Appearance	scalar	Visual*	NORML	NORML	NORML
Odor	scalar	Visual*	NORML	NORML	NORML
Emulsified Water	scalar	Visual*	>0.2	NEG	NEG
Free Water	scalar	Visual*		NEG	NEG

FLUID PROPERTIES	method	limit/base	current	history1	history2
Visc @ 40°C	cSt	ASTM D7279(m)	220	210	201
Visc @ 100°C	cSt	ASTM D7279(m)	19.35	19.1	19.0
Viscosity Index (VI)	Scale	ASTM D2270*	99	102	106

SAMPLE IMAGES



GRAPHS



Laboratory : WearCheck - C8-1175 Appleby Line, Burlington, ON L7L 5H9
Sample No. : PC0078810 **Received** : 19 Jun 2024
Lab Number : 02643041 **Tested** : 19 Jun 2024
Unique Number : 5800580 **Diagnosed** : 19 Jun 2024 - Wes Davis
Test Package : MOB 2 (Additional Tests: KV100, TAN Man, VI)

Dryden Fibre
 Box 3001, 1 Duke Street
 Dryden, ON
 CA P8N 2Z7
 Contact: Adebukola Adekanye
 aadekanye@drydenfibre.ca
 T: (807)223-9950
 F: (807)223-9176

To discuss this sample report, contact Customer Service at 1-800-268-2131.
 Test denoted (*) outside scope of accreditation, (m) method modified, (e) tested at external lab.
 Validity of results and interpretation are based on the sample and information as supplied.