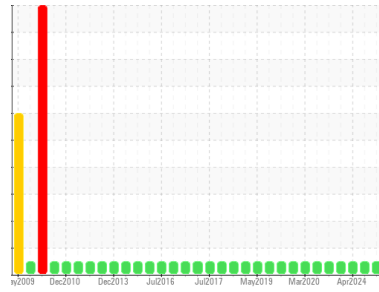


GREASE ANALYSIS

Sample Rating Trend



NORMAL



Area

Turret [450352586]

Machine Id

Turret Swivel #4 - 10" Test Grease Sample (S/N Sample Tag: NC-21602)

Component

Grease

Fluid

PETRO CANADA GREASE OG-1 (--- GAL)

DIAGNOSIS

Recommendation

Resample at the next service interval to monitor.

Wear

All component wear rates are normal.

Grease Condition

The condition of the grease is acceptable for the time in service.

Contaminants

There is no indication of any contamination in the grease.

SAMPLE INFORMATION

method	limit/base	current	history1	history2
Sample Number	Client Info	PC0080698	PC	PC
Sample Date	Client Info	16 Jun 2024	19 May 2024	16 Apr 2024
Machine Age	days	Client Info	0	0
Grease Age	days	Client Info	0	0
Grease Serviced	Client Info	N/A	N/A	N/A
Sample Status		NORMAL	NORMAL	NORMAL

CONTAMINATION

method	limit/base	current	history1	history2
Water	WC Method >0.1	NEG	NEG	NEG

WEAR METALS

method	limit/base	current	history1	history2
PQ	ASTM D8184* >200	0	0	0
Iron	ppm ASTM D5185(m) >250	6	9	8
Chromium	ppm ASTM D5185(m) >10	0	0	0
Nickel	ppm ASTM D5185(m) >5	<1	<1	0
Cadmium	ppm ASTM D5185(m)	0	0	0
Titanium	ppm ASTM D5185(m)	0	0	0
Vanadium	ppm ASTM D5185(m)	0	0	0
Lead	ppm ASTM D5185(m) >25	0	0	0
Copper	ppm ASTM D5185(m) >75	<1	0	<1
Tin	ppm ASTM D5185(m) >5	0	0	0
Silver	ppm ASTM D5185(m) >5	0	0	0

ADDITIVES

method	limit/base	current	history1	history2
Boron	ppm ASTM D5185(m)	191	128	109
Magnesium	ppm ASTM D5185(m)	6	5	4
Manganese	ppm ASTM D5185(m)	<1	0	0
Molybdenum	ppm ASTM D5185(m)	0	0	0
Phosphorus	ppm ASTM D5185(m)	4	8	10
Zinc	ppm ASTM D5185(m)	18	25	23
Antimony	ppm ASTM D5185(m)	<1	<1	0

THICKENER/SOAP

method	limit/base	current	history1	history2
Aluminum	ppm ASTM D5185(m)	2	1	1
Barium	ppm ASTM D5185(m)	<1	<1	0
Calcium	ppm ASTM D5185(m)	4140	3096	2651
Sodium	ppm ASTM D5185(m)	4	8	6
Lithium	ppm ASTM D5185(m)	11	23	24
Sulfur	ppm ASTM D5185(m)	746	688	631

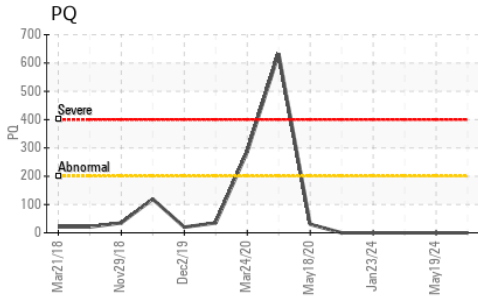
CONTAMINANTS

method	limit/base	current	history1	history2
Silicon	ppm ASTM D5185(m) >150	66	26	36
Potassium	ppm ASTM D5185(m)	2	1	2

GREASE CONDITION

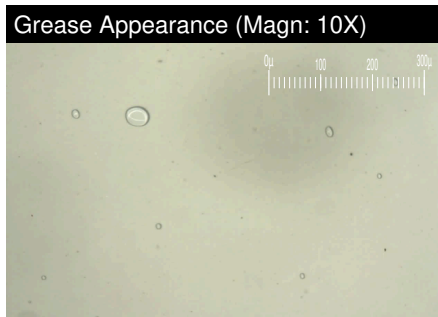
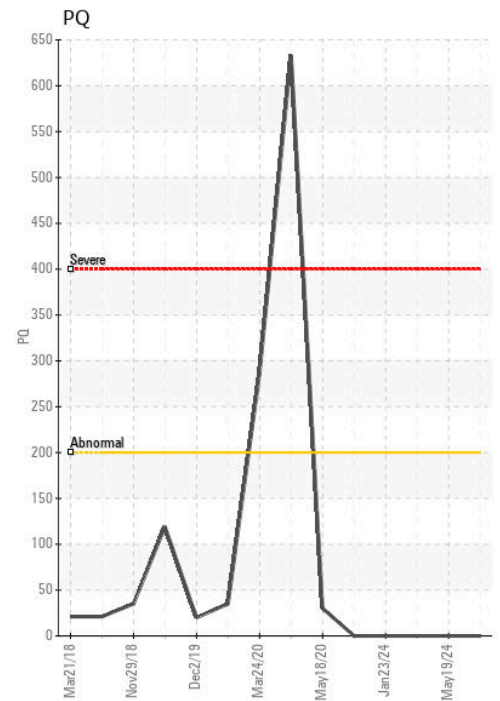
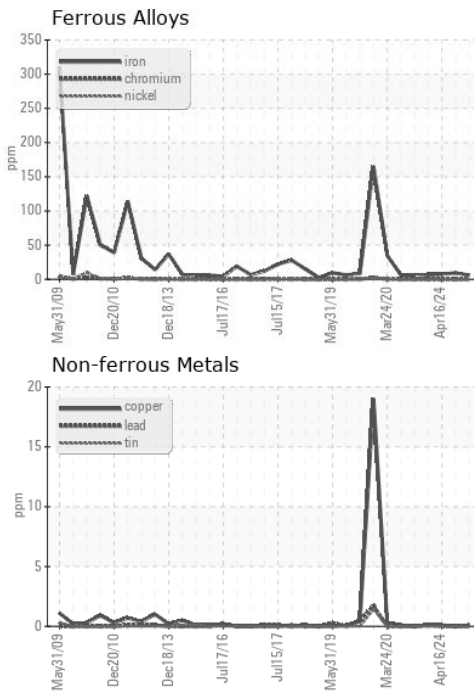
method	limit/base	current	history1	history2
Grease Color	Visual* Tan	Tan	Tan	Brown
Texture	In-house* Buttery	Buttery	Buttery	Stringy
NLGI Consistency	NLGI Scale SKF Method* 1	2	2	1-2

GREASE ANALYSIS



SAMPLE IMAGES	method	limit/base	current	history1	history2
Color					
Bottom					
PrtFilter					

GRAPHS



Laboratory : WearCheck - C8-1175 Appleby Line, Burlington, ON L7L 5H9
Sample No. : PC0080698 **Received** : 27 Jun 2024
Lab Number : 02644459 **Tested** : 27 Jun 2024
Unique Number : 5801998 **Diagnosed** : 28 Jun 2024 - Bill Quesnel
Test Package : GRS 1 (Additional Tests: BottomAnalysis)

To discuss this sample report, contact Customer Service at 1-800-268-2131.
 Test denoted (*) outside scope of accreditation, (m) method modified, (e) tested at external lab.
 Validity of results and interpretation are based on the sample and information as supplied.

Suncor - Terra Nova Projects
 Scotia Centre, 235 Water Street
 St. John's, NL
 CA A1C 1B6
 Contact: Josh Hynes
 joshynes@suncor.com
 T: (709)778-3575
 F: (709)724-2835