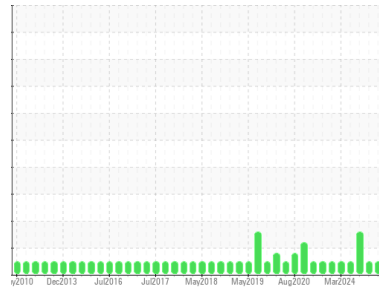


GREASE ANALYSIS

Sample Rating Trend



NORMAL



Area

Turret [450352586]

Machine Id

Turret Swivel #3 - 12" Production Grease Sample (S/N Sample Tag: NC-21602)

Component

Grease

Fluid

PETRO CANADA GREASE OG-1 (--- GAL)

DIAGNOSIS

Recommendation

Resample at the next service interval to monitor.

Wear

All component wear rates are normal.

Grease Condition

The condition of the grease is acceptable for the time in service.

Contaminants

There is no indication of any contamination in the grease.

SAMPLE INFORMATION		method	limit/base	current	history1	history2
Sample Number	Client Info			PC0080697	PC	PC
Sample Date	Client Info			16 Jun 2024	19 May 2024	16 Apr 2024
Machine Age	days	Client Info		0	0	0
Grease Age	days	Client Info		0	0	0
Grease Serviced	Client Info			N/A	N/A	N/A
Sample Status				NORMAL	NORMAL	ATTENTION

CONTAMINATION		method	limit/base	current	history1	history2
Water	WC Method		>0.1	NEG	NEG	NEG

WEAR METALS		method	limit/base	current	history1	history2
PQ		ASTM D8184*	>200	0	0	0
Iron	ppm	ASTM D5185(m)	>250	7	3	4
Chromium	ppm	ASTM D5185(m)	>10	0	0	0
Nickel	ppm	ASTM D5185(m)	>5	<1	0	0
Cadmium	ppm	ASTM D5185(m)		0	0	0
Titanium	ppm	ASTM D5185(m)		0	0	0
Vanadium	ppm	ASTM D5185(m)		0	0	0
Lead	ppm	ASTM D5185(m)	>25	0	0	0
Copper	ppm	ASTM D5185(m)	>75	<1	0	0
Tin	ppm	ASTM D5185(m)	>5	0	0	0
Silver	ppm	ASTM D5185(m)	>5	0	0	0

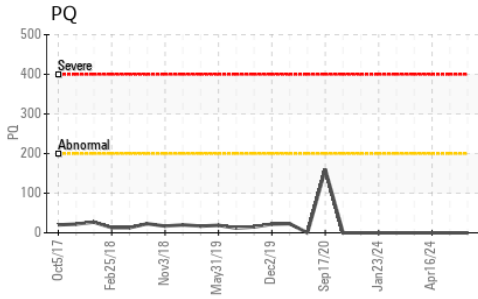
ADDITIVES		method	limit/base	current	history1	history2
Boron	ppm	ASTM D5185(m)		173	62	33
Magnesium	ppm	ASTM D5185(m)		6	2	2
Manganese	ppm	ASTM D5185(m)		<1	0	0
Molybdenum	ppm	ASTM D5185(m)		0	0	0
Phosphorus	ppm	ASTM D5185(m)		6	7	10
Zinc	ppm	ASTM D5185(m)		23	12	8
Antimony	ppm	ASTM D5185(m)		0	0	0

THICKENER/SOAP		method	limit/base	current	history1	history2
Aluminum	ppm	ASTM D5185(m)		3	1	<1
Barium	ppm	ASTM D5185(m)		<1	0	0
Calcium	ppm	ASTM D5185(m)		3918	1507	793
Sodium	ppm	ASTM D5185(m)		10	9	6
Lithium	ppm	ASTM D5185(m)		32	30	57
Sulfur	ppm	ASTM D5185(m)		731	512	457

CONTAMINANTS		method	limit/base	current	history1	history2
Silicon	ppm	ASTM D5185(m)	>150	25	24	29
Potassium	ppm	ASTM D5185(m)		8	1	<1

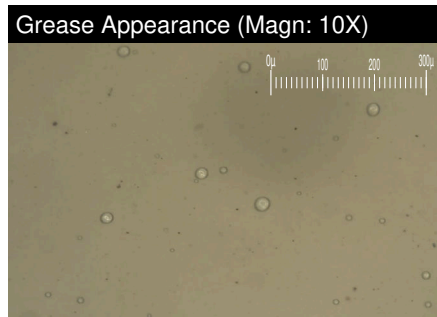
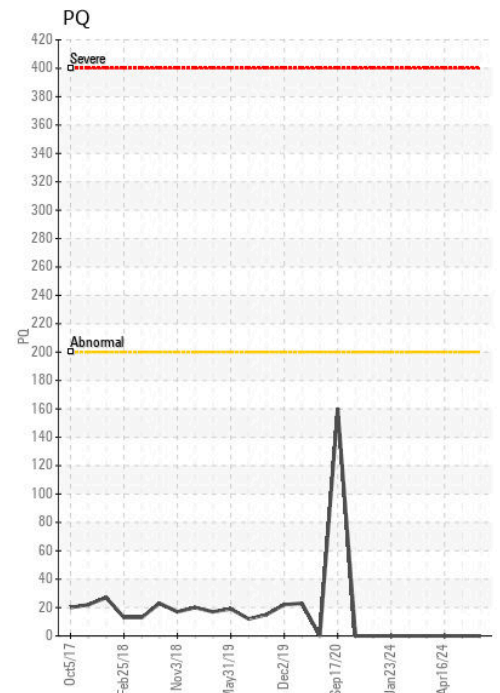
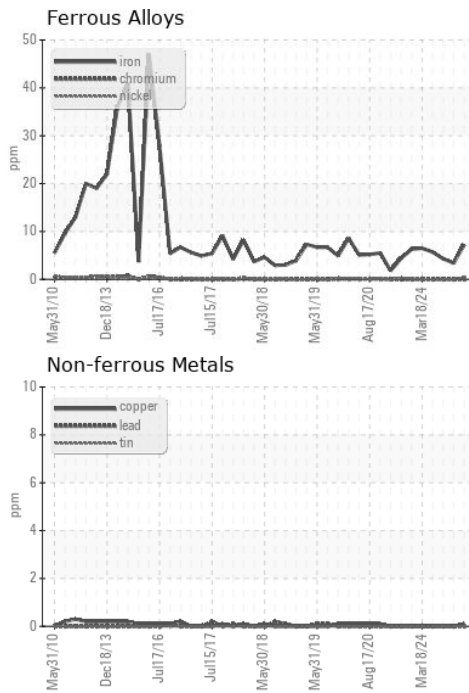
GREASE CONDITION		method	limit/base	current	history1	history2
Grease Color	Visual*	Tan		Tan	Tan	Brown
Texture	In-house*	Buttery		Buttery	Buttery	Stringy
NLGI Consistency	NLGI Scale	SKF Method*	1	2	1	1

GREASE ANALYSIS



SAMPLE IMAGES	method	limit/base	current	history1	history2
Color					
Bottom					
PrtFilter					

GRAPHS



Laboratory : WearCheck - C8-1175 Appleby Line, Burlington, ON L7L 5H9
Sample No. : PC0080697 **Received** : 27 Jun 2024
Lab Number : 02644461 **Tested** : 27 Jun 2024
Unique Number : 5802000 **Diagnosed** : 28 Jun 2024 - Bill Quesnel
Test Package : GRS 1 (Additional Tests: BottomAnalysis)

To discuss this sample report, contact Customer Service at 1-800-268-2131.
 Test denoted (*) outside scope of accreditation, (m) method modified, (e) tested at external lab.
 Validity of results and interpretation are based on the sample and information as supplied.

Suncor - Terra Nova Projects
 Scotia Centre, 235 Water Street
 St. John's, NL
 CA A1C 1B6
 Contact: Josh Hynes
 joshynes@suncor.com
 T: (709)778-3575
 F: (709)724-2835