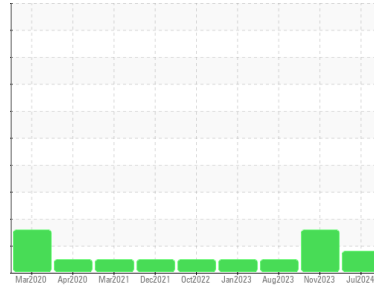




# OIL ANALYSIS REPORT

Sample Rating Trend



Machine Id  
**OR500**  
 Component  
**Rear Differential**  
 Fluid  
**PETRO CANADA DURATRAN (68 LTR)**

## DIAGNOSIS

**Recommendation**  
 The filter change at the time of sampling has been noted. We recommend an early resample to monitor this condition.

**Wear**  
 Lead ppm levels are marginal. All other component wear rates are normal.

**Contamination**  
 There is no indication of any contamination in the oil.

**Fluid Condition**  
 The condition of the oil is acceptable for the time in service.

## SAMPLE INFORMATION

	method	limit/base	current	history1	history2
Sample Number	Client Info		<b>GFL0124587</b>	GFL0092235	GFL0087405
Sample Date	Client Info		<b>08 Jul 2024</b>	15 Nov 2023	02 Aug 2023
Machine Age	hrs	Client Info	<b>18566</b>	18038	17633
Oil Age	hrs	Client Info	<b>16763</b>	1000	723
Oil Changed	Client Info		<b>Not Chngd</b>	Not Chngd	Not Chngd
Sample Status			<b>MARGINAL</b>	ABNORMAL	NORMAL

## CONTAMINATION

	method	limit/base	current	history1	history2
Water	WC Method	>.2	<b>NEG</b>	NEG	NEG

## WEAR METALS

	method	limit/base	current	history1	history2	
Iron	ppm	ASTM D5185(m)	>500	<b>41</b>	32	20
Chromium	ppm	ASTM D5185(m)	>10	<b>&lt;1</b>	0	0
Nickel	ppm	ASTM D5185(m)	>10	<b>&lt;1</b>	<1	<1
Titanium	ppm	ASTM D5185(m)		<b>&lt;1</b>	0	<1
Silver	ppm	ASTM D5185(m)		<b>0</b>	<1	0
Aluminum	ppm	ASTM D5185(m)	>25	<b>2</b>	1	1
Lead	ppm	ASTM D5185(m)	>25	<b>▲ 29</b>	▲ 27	14
Copper	ppm	ASTM D5185(m)	>100	<b>117</b>	▲ 116	84
Tin	ppm	ASTM D5185(m)	>10	<b>1</b>	<1	<1
Antimony	ppm	ASTM D5185(m)	>5	<b>0</b>	0	0
Vanadium	ppm	ASTM D5185(m)		<b>0</b>	0	0
Beryllium	ppm	ASTM D5185(m)		<b>0</b>	0	0
Cadmium	ppm	ASTM D5185(m)		<b>0</b>	0	0

## ADDITIVES

	method	limit/base	current	history1	history2	
Boron	ppm	ASTM D5185(m)	110	<b>92</b>	95	97
Barium	ppm	ASTM D5185(m)	0.0	<b>&lt;1</b>	<1	0
Molybdenum	ppm	ASTM D5185(m)	0.0	<b>2</b>	2	2
Manganese	ppm	ASTM D5185(m)	1	<b>1</b>	<1	<1
Magnesium	ppm	ASTM D5185(m)	13	<b>38</b>	39	40
Calcium	ppm	ASTM D5185(m)	3610	<b>3245</b>	3380	3359
Phosphorus	ppm	ASTM D5185(m)	1192	<b>977</b>	1032	1073
Zinc	ppm	ASTM D5185(m)	1455	<b>995</b>	1018	1039
Sulfur	ppm	ASTM D5185(m)	2641	<b>2515</b>	2635	2496
Lithium	ppm	ASTM D5185(m)		<b>&lt;1</b>	<1	<1

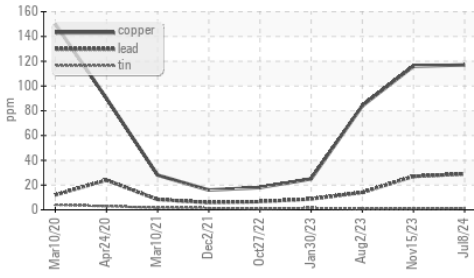
## CONTAMINANTS

	method	limit/base	current	history1	history2	
Silicon	ppm	ASTM D5185(m)	>75	<b>9</b>	11	12
Sodium	ppm	ASTM D5185(m)		<b>5</b>	2	2
Potassium	ppm	ASTM D5185(m)	>20	<b>1</b>	0	<1

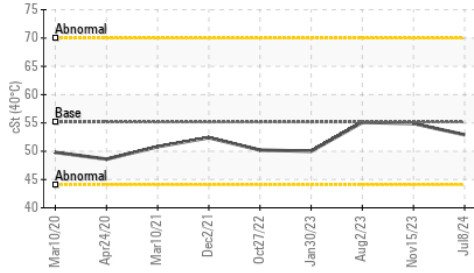


# OIL ANALYSIS REPORT

### ▲ Non-ferrous Metals



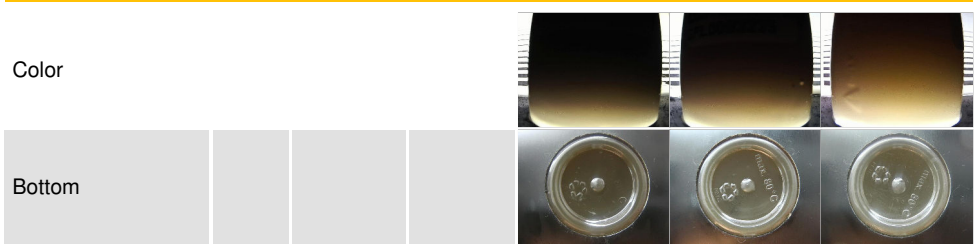
### Viscosity @ 40°C



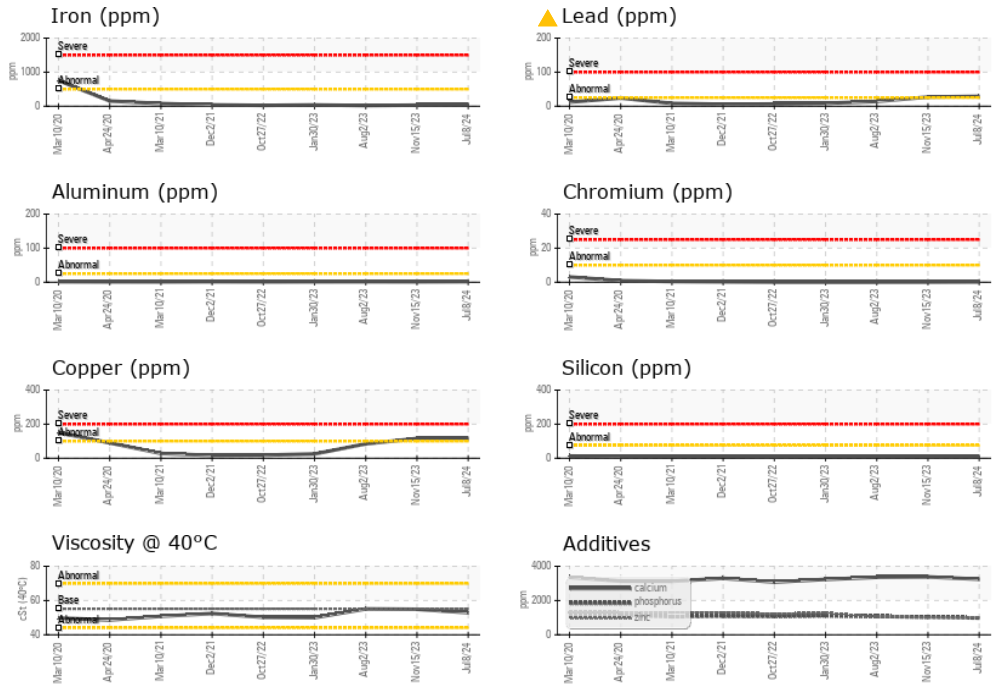
VISUAL	method	limit/base	current	history1	history2
White Metal	scalar	Visual*	NONE	VLITE	NONE
Yellow Metal	scalar	Visual*	NONE	NONE	NONE
Precipitate	scalar	Visual*	NONE	NONE	NONE
Silt	scalar	Visual*	NONE	NONE	NONE
Debris	scalar	Visual*	NONE	NONE	NONE
Sand/Dirt	scalar	Visual*	NONE	NONE	NONE
Appearance	scalar	Visual*	NORML	NORML	NORML
Odor	scalar	Visual*	NORML	NORML	NORML
Emulsified Water	scalar	Visual*	>.2	NEG	NEG
Free Water	scalar	Visual*		NEG	NEG

FLUID PROPERTIES	method	limit/base	current	history1	history2
Visc @ 40°C	cSt	ASTM D7279(m)	55.14	52.9	54.9

### SAMPLE IMAGES



### GRAPHS



**Laboratory** : WearCheck - C8-1175 Appleby Line, Burlington, ON L7L 5H9 **GFL Environmental - 720 - Lafleche - Landfill**  
**Sample No.** : GFL0124587 **Received** : 11 Jul 2024 **17125 Lafleche Road,**  
**Lab Number** : 02647413 **Tested** : 11 Jul 2024 **Moose Creek, ON**  
**Unique Number** : 5812965 **Diagnosed** : 12 Jul 2024 - Kevin Marson **CA K0C 1W0**  
**Test Package** : MOB 1 **Contact:** Charles Bergeron **cbergeron@gflenv.com**  
**T: (613)538-4853**  
**F:**

To discuss this sample report, contact Customer Service at 1-800-268-2131.  
 Test denoted (\*) outside scope of accreditation, (m) method modified, (e) tested at external lab.  
 Validity of results and interpretation are based on the sample and information as supplied.