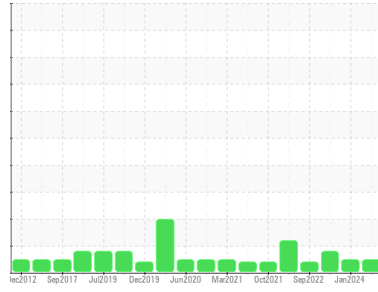


OIL ANALYSIS REPORT

Sample Rating Trend



NORMAL



Machine Id
IMM #15 (S/N 200105)
Component
Hydraulic System
Fluid
PETRO CANADA HYDREX AW 46 (2500 LTR)

DIAGNOSIS

Recommendation

Resample at the next service interval to monitor.

Wear

All component wear rates are normal.

Contamination

The system cleanliness is acceptable for your target ISO 4406 cleanliness code. The system and fluid cleanliness is acceptable.

Fluid Condition

The AN level is acceptable for this fluid. The condition of the oil is suitable for further service.

SAMPLE INFORMATION		method	limit/base	current	history1	history2
Sample Number	Client Info			PC0087492	PC0080836	PC0076917
Sample Date	Client Info			20 Jun 2024	15 Jan 2024	11 Jul 2023
Machine Age	hrs	Client Info		0	0	0
Oil Age	hrs	Client Info		0	0	0
Oil Changed	Client Info			Not Changed	N/A	Changed
Sample Status				NORMAL	NORMAL	SEVERE

CONTAMINATION		method	limit/base	current	history1	history2
Water	WC Method		>0.05	NEG	NEG	NEG

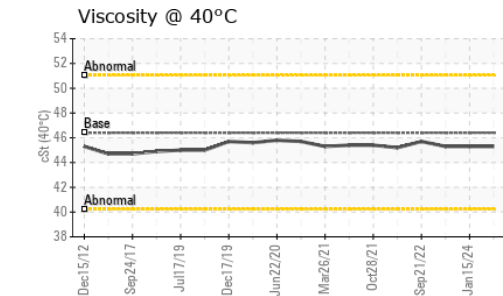
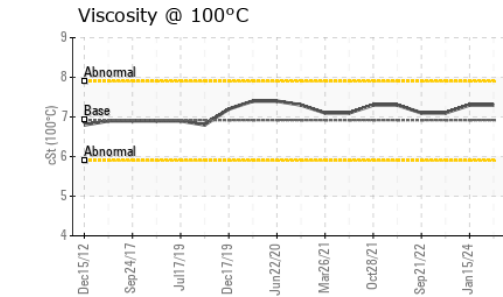
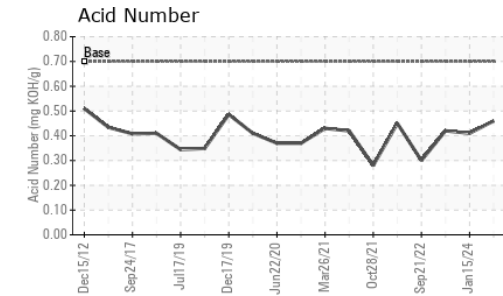
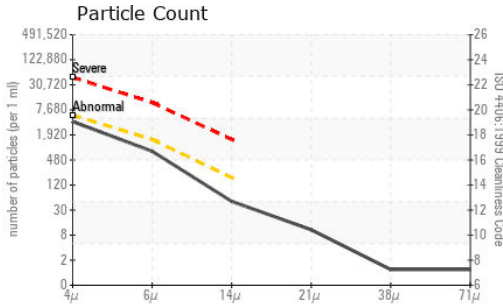
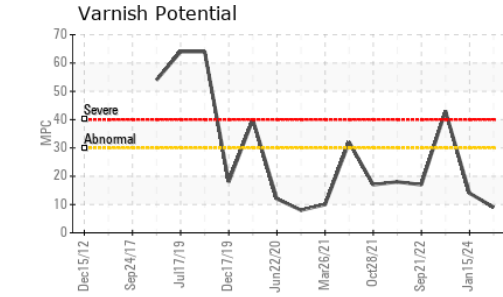
WEAR METALS		method	limit/base	current	history1	history2
Iron	ppm	ASTM D5185(m)	>20	<1	0	<1
Chromium	ppm	ASTM D5185(m)	>20	0	0	<1
Nickel	ppm	ASTM D5185(m)	>20	<1	0	<1
Titanium	ppm	ASTM D5185(m)		0	0	0
Silver	ppm	ASTM D5185(m)		<1	0	0
Aluminum	ppm	ASTM D5185(m)	>20	<1	<1	0
Lead	ppm	ASTM D5185(m)	>20	0	0	0
Copper	ppm	ASTM D5185(m)	>20	<1	<1	1
Tin	ppm	ASTM D5185(m)	>20	0	0	0
Antimony	ppm	ASTM D5185(m)		0	0	0
Vanadium	ppm	ASTM D5185(m)		0	0	0
Beryllium	ppm	ASTM D5185(m)		0	0	0
Cadmium	ppm	ASTM D5185(m)		0	0	0

ADDITIVES		method	limit/base	current	history1	history2
Boron	ppm	ASTM D5185(m)	0	<1	0	<1
Barium	ppm	ASTM D5185(m)	0	0	0	0
Molybdenum	ppm	ASTM D5185(m)	0	0	0	0
Manganese	ppm	ASTM D5185(m)	0	0	0	0
Magnesium	ppm	ASTM D5185(m)	0	0	1	4
Calcium	ppm	ASTM D5185(m)	50	30	47	31
Phosphorus	ppm	ASTM D5185(m)	330	334	363	365
Zinc	ppm	ASTM D5185(m)	430	415	393	359
Sulfur	ppm	ASTM D5185(m)	760	744	838	743
Lithium	ppm	ASTM D5185(m)		<1	<1	<1

CONTAMINANTS		method	limit/base	current	history1	history2
Silicon	ppm	ASTM D5185(m)	>15	<1	0	0
Sodium	ppm	ASTM D5185(m)		0	0	<1
Potassium	ppm	ASTM D5185(m)	>20	0	<1	<1

FLUID CLEANLINESS		method	limit/base	current	history1	history2
Particles >4µm		ASTM D7647	>5000	3496	1068	4454
Particles >6µm		ASTM D7647	>1300	682	364	625
Particles >14µm		ASTM D7647	>160	43	36	22
Particles >21µm		ASTM D7647	>40	9	10	3
Particles >38µm		ASTM D7647	>10	1	1	0
Particles >71µm		ASTM D7647	>3	1	1	0
Oil Cleanliness		ISO 4406 (c)	>19/17/14	19/17/13	17/16/12	19/16/12

OIL ANALYSIS REPORT



Laboratory : WearCheck - C8-1175 Appleby Line, Burlington, ON L7L 5H9
Sample No. : PC0087492
Lab Number : 02647638
Unique Number : 5813190
Test Package : IND 2 (Additional Tests: KV100, MPC, VI)

ROPAK PACKAGING CANADA
 2240 WYECROFT RD
 OAKVILLE, ON
 CA L6L 6M1
 Contact: Frank Maio
 Frank.Maio@mauserpackaging.com
 T: (905)465-9019
 F:

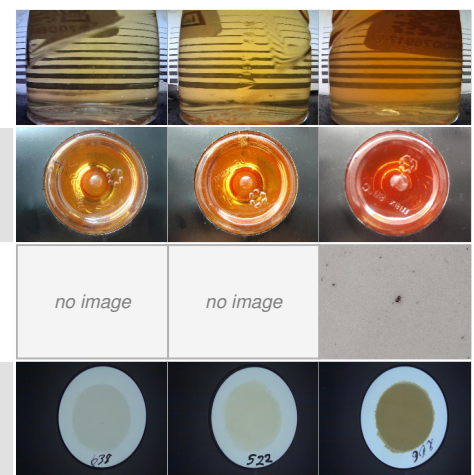
To discuss this sample report, contact Customer Service at 1-800-268-2131.
 Test denoted (*) outside scope of accreditation, (m) method modified, (e) tested at external lab.
 Validity of results and interpretation are based on the sample and information as supplied.

FLUID DEGRADATION		method	limit/base	current	history1	history2
Acid Number (AN)	mg KOH/g	ASTM D974*	0.70	0.46	0.41	0.42
MPC Varnish Potential	Scale	ASTM D7843(m)*	>15	9	14	▲ 43

VISUAL		method	limit/base	current	history1	history2
White Metal	scalar	Visual*	NONE	NONE	NONE	VLITE
Yellow Metal	scalar	Visual*	NONE	NONE	NONE	NONE
Precipitate	scalar	Visual*	NONE	NONE	NONE	NONE
Silt	scalar	Visual*	NONE	NONE	NONE	NONE
Debris	scalar	Visual*	NONE	NONE	NONE	NONE
Sand/Dirt	scalar	Visual*	NONE	NONE	NONE	NONE
Appearance	scalar	Visual*	NORML	NORML	NORML	NORML
Odor	scalar	Visual*	NORML	NORML	NORML	NORML
Emulsified Water	scalar	Visual*	>0.05	NEG	NEG	NEG
Free Water	scalar	Visual*		NEG	NEG	NEG

FLUID PROPERTIES		method	limit/base	current	history1	history2
Visc @ 40°C	cSt	ASTM D7279(m)	46.4	45.3	45.3	45.3
Visc @ 100°C	cSt	ASTM D7279(m)	6.92	7.3	7.3	7.1
Viscosity Index (VI)	Scale	ASTM D2270*	104	123	123	115

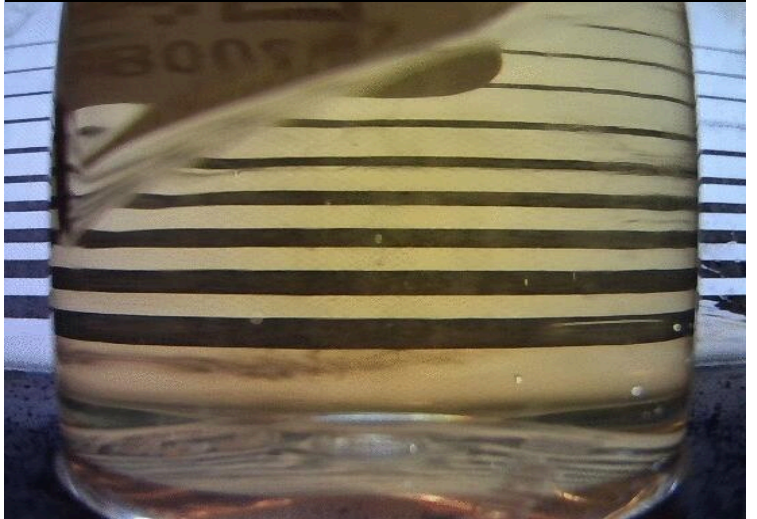
SAMPLE IMAGES		method	limit/base	current	history1	history2
Color						
Bottom						
PrtFilter				no image	no image	
MPC						



MPC (Varnish Test)



Sample Color & Clarity



This page left intentionally blank