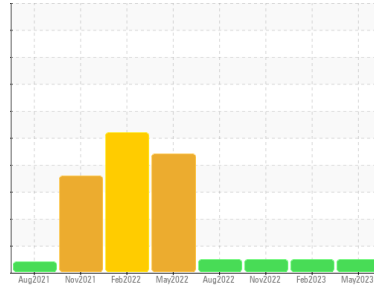


OIL ANALYSIS REPORT

Sample Rating Trend



NORMAL



Area
Pickle Line
 Machine Id
[Pickle Line] 580045-CHOPPER KNIFE GB - OPER. SIDE
 Component
Non-Drive End Gearbox
 Fluid
PETRO CANADA ENDURATEX EP 220 (--- GAL)

DIAGNOSIS

Recommendation

Resample at the next service interval to monitor.
 NOTE: Please provide information regarding reservoir capacity, filter type and micron rating with next sample.

Wear

All component wear rates are normal.

Contamination

There is no indication of any contamination in the oil.

Fluid Condition

The AN level is acceptable for this fluid. The condition of the oil is suitable for further service.

SAMPLE INFORMATION

method	limit/base	current	history 1	history 2
Sample Number	Client Info	PCA0095471	PCA0089506	PCA0081741
Sample Date	Client Info	23 May 2023	23 Feb 2023	22 Nov 2022
Machine Age	hrs	Client Info	0	0
Oil Age	hrs	Client Info	0	0
Oil Changed	Client Info	Not Chngd	Not Chngd	Not Chngd
Sample Status		NORMAL	NORMAL	NORMAL

WEAR METALS

method	limit/base	current	history 1	history 2	
PQ	ASTM D8184	14	63	---	
Iron	ppm	ASTM D5185m >200	29	46	<1
Chromium	ppm	ASTM D5185m >15	<1	<1	0
Nickel	ppm	ASTM D5185m >15	<1	<1	0
Titanium	ppm	ASTM D5185m	0	<1	0
Silver	ppm	ASTM D5185m	0	0	0
Aluminum	ppm	ASTM D5185m >25	<1	<1	0
Lead	ppm	ASTM D5185m >100	0	0	0
Copper	ppm	ASTM D5185m >200	<1	<1	0
Tin	ppm	ASTM D5185m >25	0	0	0
Vanadium	ppm	ASTM D5185m	0	0	0
Cadmium	ppm	ASTM D5185m	0	0	0

ADDITIVES

method	limit/base	current	history 1	history 2	
Boron	ppm	ASTM D5185m 60	4	60	67
Barium	ppm	ASTM D5185m 0	0	0	0
Molybdenum	ppm	ASTM D5185m 0	0	<1	0
Manganese	ppm	ASTM D5185m 0	<1	<1	0
Magnesium	ppm	ASTM D5185m 0	0	0	0
Calcium	ppm	ASTM D5185m 0	3	3	16
Phosphorus	ppm	ASTM D5185m 270	120	264	250
Zinc	ppm	ASTM D5185m 0	2	2	5
Sulfur	ppm	ASTM D5185m 11200	7822	7379	6733

CONTAMINANTS

method	limit/base	current	history 1	history 2	
Silicon	ppm	ASTM D5185m >50	6	12	4
Sodium	ppm	ASTM D5185m	<1	1	0
Potassium	ppm	ASTM D5185m >20	2	<1	0

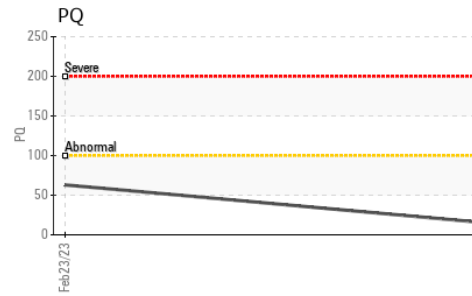
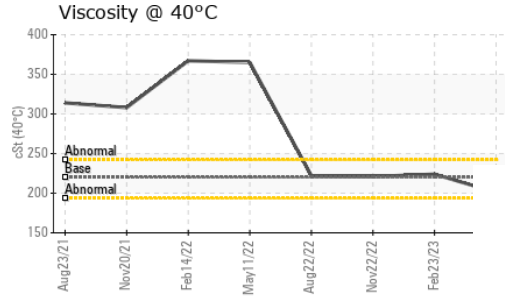
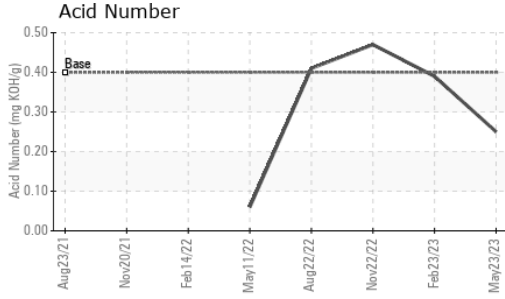
FLUID DEGRADATION

method	limit/base	current	history 1	history 2	
Acid Number (AN)	mg KOH/g	ASTM D8045 0.40	0.25	0.39	0.47

VISUAL

method	limit/base	current	history 1	history 2	
White Metal	scalar	*Visual NONE	NONE	NONE	MODER
Yellow Metal	scalar	*Visual NONE	NONE	NONE	NONE
Precipitate	scalar	*Visual NONE	NONE	NONE	NONE
Silt	scalar	*Visual NONE	NONE	NONE	NONE
Debris	scalar	*Visual NONE	NONE	NONE	NONE
Sand/Dirt	scalar	*Visual NONE	NONE	NONE	NONE
Appearance	scalar	*Visual NORML	NORML	NORML	NORML
Odor	scalar	*Visual NORML	NORML	NORML	NORML
Emulsified Water	scalar	*Visual >0.2	NEG	NEG	NEG
Free Water	scalar	*Visual	NEG	NEG	NEG

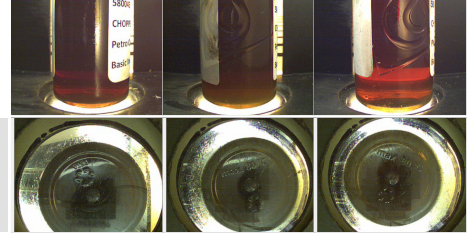
OIL ANALYSIS REPORT



FLUID PROPERTIES		method	limit/base	current	history 1	history 2
Visc @ 40°C	cSt	ASTM D445	220	201	224	221

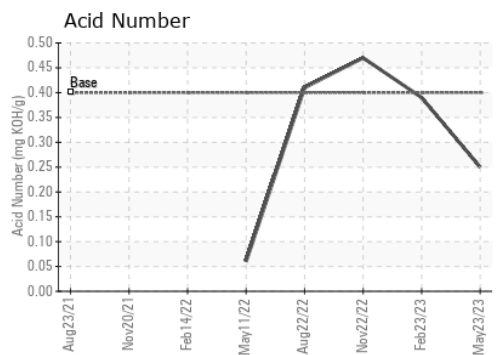
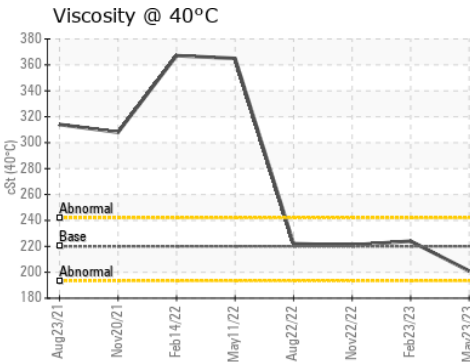
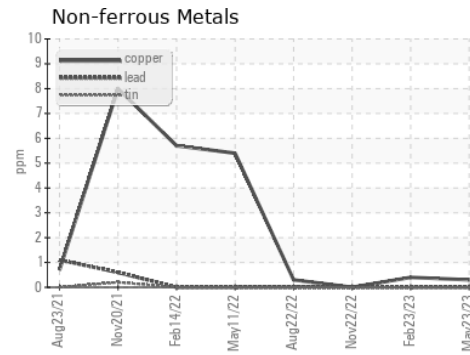
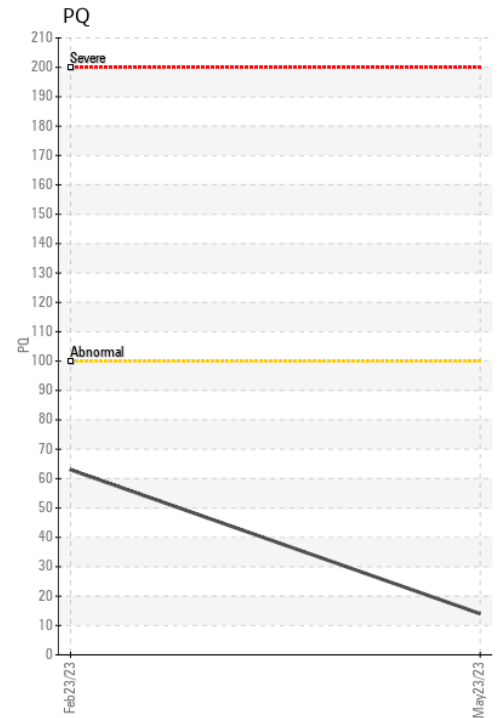
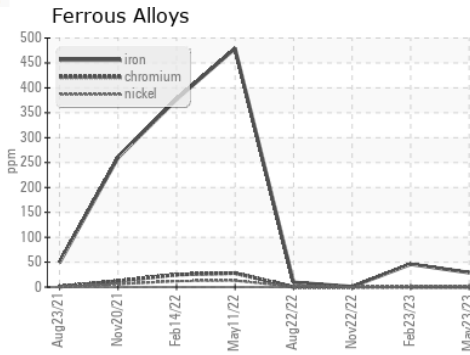
SAMPLE IMAGES		method	limit/base	current	history 1	history 2
---------------	--	--------	------------	---------	-----------	-----------

Color



Bottom

GRAPHS



Certificate L2367

Laboratory : WearCheck USA - 501 Madison Ave., Cary, NC 27513
Sample No. : PCA0095471
Lab Number : 05894578
Unique Number : 10550388
Test Package : PLANT

SDI - Steel Dynamics Inc. - Heartland
 455 West Industrial Drive
 Terre Haute, IN
 US 47802
 Contact: BRAD ELLIS
 brad.ellis@steeldynamics.com

To discuss this sample report, contact Customer Service at 1-800-237-1369.

* - Denotes test methods that are outside of the ISO 17025 scope of accreditation.

Statements of conformity to specifications are based on the simple acceptance decision rule (JCGM 106:2012)

T:
F: