

Machine Id  
**EISEN BEISS L-10 130 DIST**  
 Component  
**Gearbox**  
 Fluid  
**PETRO CANADA ENDURATEX EP 460 (75 GAL)**

**DIAGNOSIS**

**Recommendation**

Resample at the next service interval to monitor.

**Wear**

All component wear rates are normal.

**Contamination**

There is no indication of any contamination in the component.

**Fluid Condition**

The AN level is acceptable for this fluid. The condition of the oil is suitable for further service.

**SAMPLE INFORMATION**

method	limit/base	current	history1	history2
Sample Number	Client Info	<b>PCA0091822</b>	PCA0091896	PCA0080536
Sample Date	Client Info	<b>22 May 2023</b>	15 Feb 2023	15 Nov 2022
Machine Age	hrs	<b>0</b>	0	0
Oil Age	hrs	<b>0</b>	0	0
Oil Changed	Client Info	<b>N/A</b>	N/A	N/A
Sample Status		<b>NORMAL</b>	NORMAL	NORMAL

**WEAR METALS**

method	limit/base	current	history1	history2	
PQ	ASTM D8184	<b>21</b>	21	---	
Iron	ppm	ASTM D5185m >200	<b>53</b>	50	50
Chromium	ppm	ASTM D5185m >15	<b>0</b>	<1	0
Nickel	ppm	ASTM D5185m >15	<b>0</b>	0	0
Titanium	ppm	ASTM D5185m	<b>0</b>	0	0
Silver	ppm	ASTM D5185m	<b>0</b>	0	2
Aluminum	ppm	ASTM D5185m >25	<b>0</b>	0	0
Lead	ppm	ASTM D5185m >100	<b>&lt;1</b>	0	<1
Copper	ppm	ASTM D5185m >200	<b>&lt;1</b>	0	0
Tin	ppm	ASTM D5185m >25	<b>0</b>	0	0
Vanadium	ppm	ASTM D5185m	<b>0</b>	0	0
Cadmium	ppm	ASTM D5185m	<b>0</b>	0	0

**ADDITIVES**

method	limit/base	current	history1	history2	
Boron	ppm	ASTM D5185m 55	<b>28</b>	27	28
Barium	ppm	ASTM D5185m 0	<b>0</b>	0	0
Molybdenum	ppm	ASTM D5185m 0	<b>1</b>	<1	<1
Manganese	ppm	ASTM D5185m 0	<b>&lt;1</b>	<1	<1
Magnesium	ppm	ASTM D5185m 2	<b>&lt;1</b>	<1	<1
Calcium	ppm	ASTM D5185m 6	<b>5</b>	4	4
Phosphorus	ppm	ASTM D5185m 240	<b>393</b>	380	392
Zinc	ppm	ASTM D5185m 3	<b>7</b>	3	1
Sulfur	ppm	ASTM D5185m 10310	<b>5897</b>	4950	6857

**CONTAMINANTS**

method	limit/base	current	history1	history2	
Silicon	ppm	ASTM D5185m >50	<b>1</b>	3	<1
Sodium	ppm	ASTM D5185m	<b>0</b>	0	0
Potassium	ppm	ASTM D5185m >20	<b>1</b>	2	2

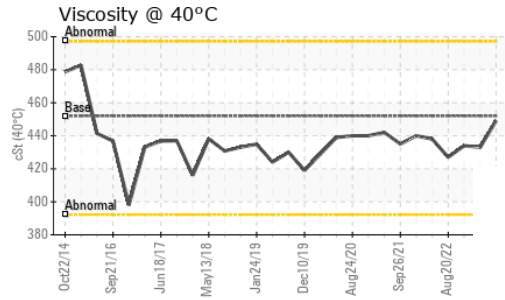
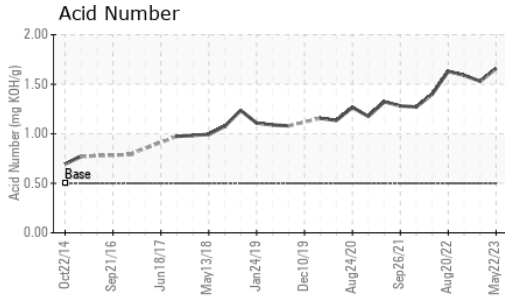
**FLUID DEGRADATION**

method	limit/base	current	history1	history2	
Acid Number (AN)	mg KOH/g	ASTM D8045 0.5	<b>1.66</b>	1.53	1.59

**VISUAL**

method	limit/base	current	history1	history2	
White Metal	scalar	*Visual NONE	<b>LIGHT</b>	NONE	LIGHT
Yellow Metal	scalar	*Visual NONE	<b>NONE</b>	NONE	NONE
Precipitate	scalar	*Visual NONE	<b>NONE</b>	NONE	NONE
Silt	scalar	*Visual NONE	<b>NONE</b>	NONE	NONE
Debris	scalar	*Visual NONE	<b>NONE</b>	NONE	NONE
Sand/Dirt	scalar	*Visual NONE	<b>NONE</b>	NONE	NONE
Appearance	scalar	*Visual NORML	<b>NORML</b>	NORML	NORML
Odor	scalar	*Visual NORML	<b>NORML</b>	NORML	NORML
Emulsified Water	scalar	*Visual >0.2	<b>NEG</b>	NEG	NEG
Free Water	scalar	*Visual	<b>NEG</b>	NEG	NEG

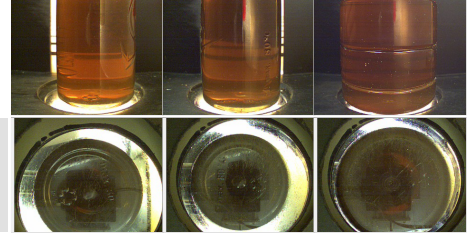
# OIL ANALYSIS REPORT



FLUID PROPERTIES		method	limit/base	current	history1	history2
Visc @ 40°C	cSt	ASTM D445	452	<b>449</b>	433	434

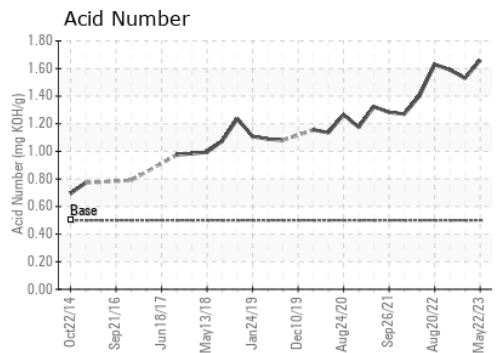
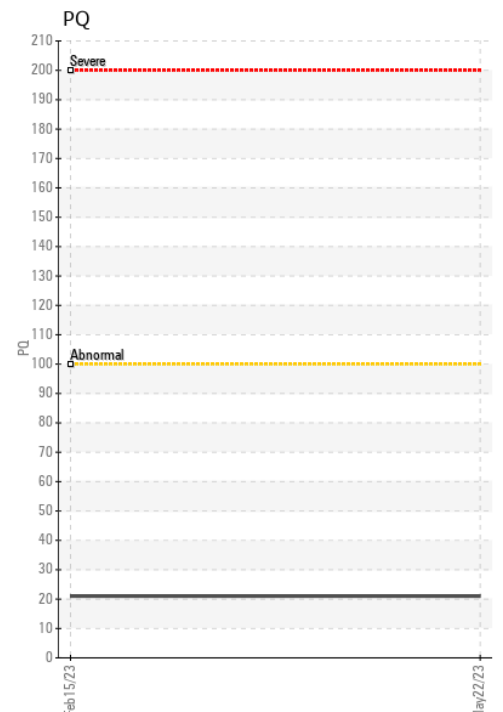
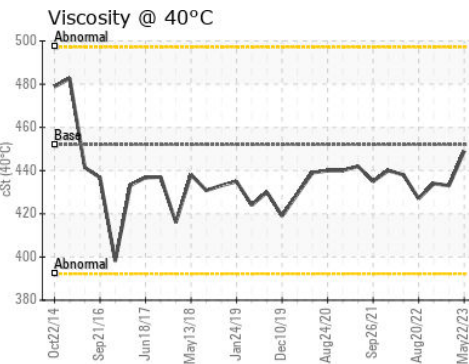
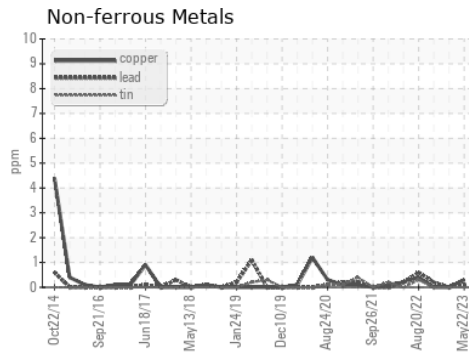
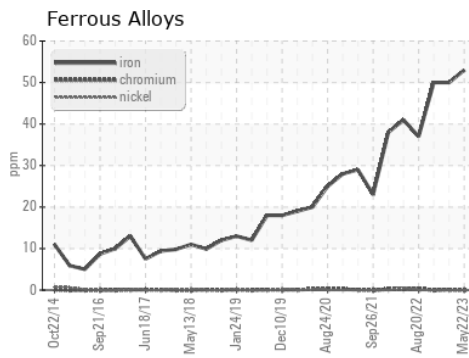
SAMPLE IMAGES		method	limit/base	current	history1	history2
---------------	--	--------	------------	---------	----------	----------

Color



Bottom

## GRAPHS



Certificate L2367

**Laboratory** : WearCheck USA - 501 Madison Ave., Cary, NC 27513  
**Sample No.** : PCA0091822  
**Lab Number** : **05896334**  
**Unique Number** : 10552144  
**Test Package** : PLANT

**CERTAINTED VINYL PLANT**  
 2651 PENNY RD  
 CLAREMONT, NC  
 US 28613  
 Contact: BRUCE JAMES  
 bruce.a.james@saint-gobain.com  
 T: (828)459-3320  
 F: (828)459-3329

To discuss this sample report, contact Customer Service at 1-800-237-1369.

\* - Denotes test methods that are outside of the ISO 17025 scope of accreditation.

Statements of conformity to specifications are based on the simple acceptance decision rule (JCGM 106:2012)