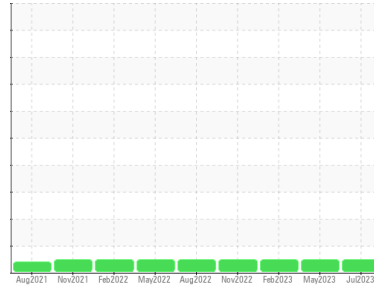


# OIL ANALYSIS REPORT

Sample Rating Trend

**NORMAL**



Area  
**Galv Line**  
 Machine Id  
**[Galv Line] 650250-HOT BRIDLE ROLL # 2**  
 Component  
**Gearbox**  
 Fluid  
**PETRO CANADA ENDURATEX EP 220 (--- GAL)**

## DIAGNOSIS

### Recommendation

Resample at the next service interval to monitor.  
 NOTE: Please provide information regarding reservoir capacity, filter type and micron rating with next sample.

### Wear

All component wear rates are normal.

### Contamination

There is no indication of any contamination in the oil.

### Fluid Condition

The AN level is acceptable for this fluid. The condition of the oil is suitable for further service.

SAMPLE INFORMATION		method	limit/base	current	history1	history2
Sample Number	Client Info			<b>PCA0101472</b>	PCA0095422	PCA0089486
Sample Date	Client Info			<b>01 Jul 2023</b>	23 May 2023	01 Feb 2023
Machine Age	hrs	Client Info		<b>0</b>	0	0
Oil Age	hrs	Client Info		<b>0</b>	0	0
Oil Changed	Client Info			<b>N/A</b>	Not Changd	Not Changd
Sample Status				<b>NORMAL</b>	NORMAL	NORMAL

WEAR METALS		method	limit/base	current	history1	history2
PQ		ASTM D8184		<b>12</b>	10	9
Iron	ppm	ASTM D5185m	>200	<b>12</b>	12	12
Chromium	ppm	ASTM D5185m	>15	<b>0</b>	0	0
Nickel	ppm	ASTM D5185m	>15	<b>&lt;1</b>	0	0
Titanium	ppm	ASTM D5185m		<b>0</b>	<1	0
Silver	ppm	ASTM D5185m		<b>0</b>	0	0
Aluminum	ppm	ASTM D5185m	>25	<b>0</b>	<1	0
Lead	ppm	ASTM D5185m	>100	<b>0</b>	<1	<1
Copper	ppm	ASTM D5185m	>200	<b>&lt;1</b>	<1	0
Tin	ppm	ASTM D5185m	>25	<b>0</b>	0	0
Vanadium	ppm	ASTM D5185m		<b>0</b>	<1	0
Cadmium	ppm	ASTM D5185m		<b>0</b>	0	0

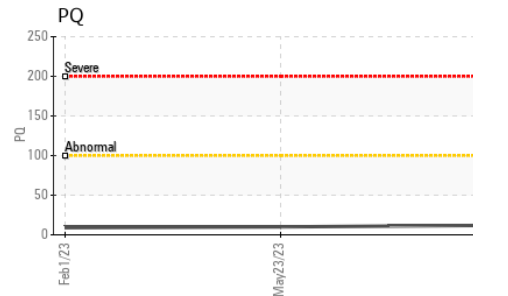
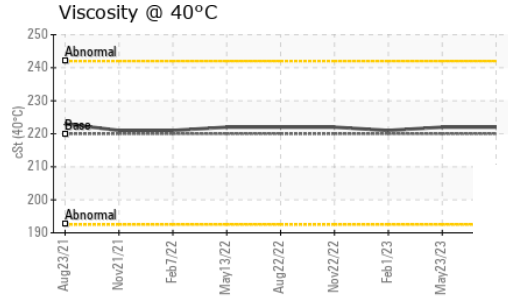
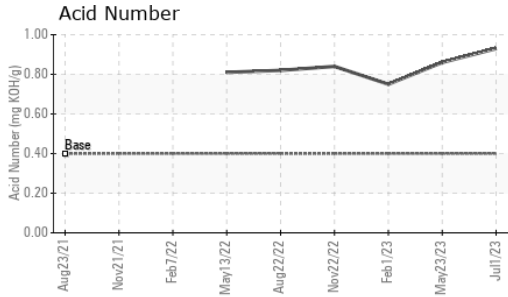
ADDITIVES		method	limit/base	current	history1	history2
Boron	ppm	ASTM D5185m	60	<b>17</b>	16	16
Barium	ppm	ASTM D5185m	0	<b>0</b>	0	0
Molybdenum	ppm	ASTM D5185m	0	<b>&lt;1</b>	0	0
Manganese	ppm	ASTM D5185m	0	<b>&lt;1</b>	<1	<1
Magnesium	ppm	ASTM D5185m	0	<b>&lt;1</b>	4	<1
Calcium	ppm	ASTM D5185m	0	<b>7</b>	7	6
Phosphorus	ppm	ASTM D5185m	270	<b>257</b>	262	241
Zinc	ppm	ASTM D5185m	0	<b>25</b>	21	30
Sulfur	ppm	ASTM D5185m	11200	<b>10172</b>	12050	10153

CONTAMINANTS		method	limit/base	current	history1	history2
Silicon	ppm	ASTM D5185m	>50	<b>10</b>	12	13
Sodium	ppm	ASTM D5185m		<b>0</b>	2	0
Potassium	ppm	ASTM D5185m	>20	<b>&lt;1</b>	5	0

FLUID DEGRADATION		method	limit/base	current	history1	history2
Acid Number (AN)	mg KOH/g	ASTM D8045	0.40	<b>0.93</b>	0.86	0.75

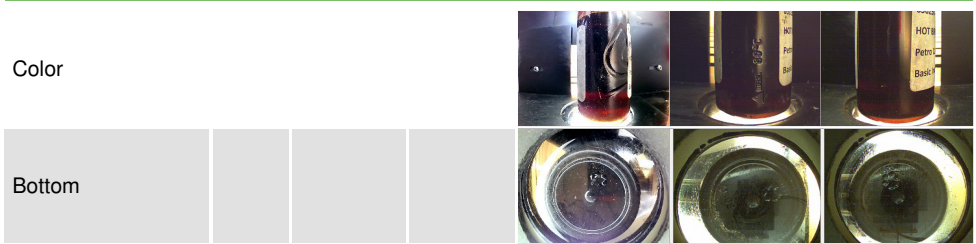
VISUAL		method	limit/base	current	history1	history2
White Metal	scalar	*Visual	NONE	<b>NONE</b>	NONE	NONE
Yellow Metal	scalar	*Visual	NONE	<b>NONE</b>	NONE	NONE
Precipitate	scalar	*Visual	NONE	<b>NONE</b>	NONE	NONE
Silt	scalar	*Visual	NONE	<b>NONE</b>	NONE	NONE
Debris	scalar	*Visual	NONE	<b>NONE</b>	NONE	NONE
Sand/Dirt	scalar	*Visual	NONE	<b>NONE</b>	NONE	NONE
Appearance	scalar	*Visual	NORML	<b>NORML</b>	NORML	NORML
Odor	scalar	*Visual	NORML	<b>NORML</b>	NORML	NORML
Emulsified Water	scalar	*Visual	>0.2	<b>NEG</b>	NEG	NEG
Free Water	scalar	*Visual		<b>NEG</b>	NEG	NEG

# OIL ANALYSIS REPORT

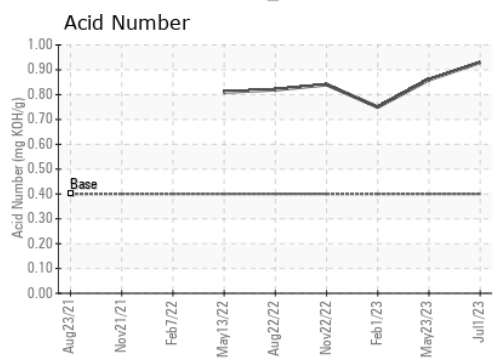
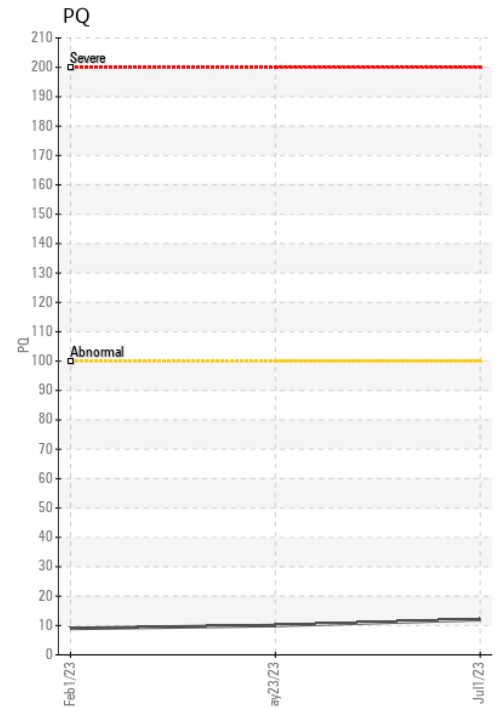
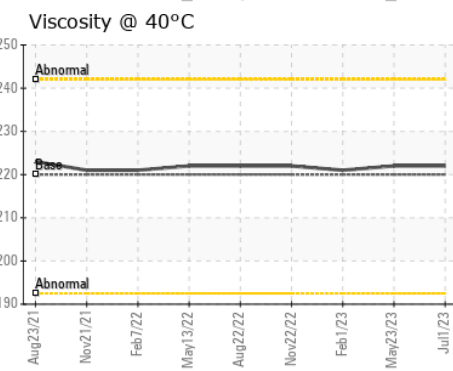
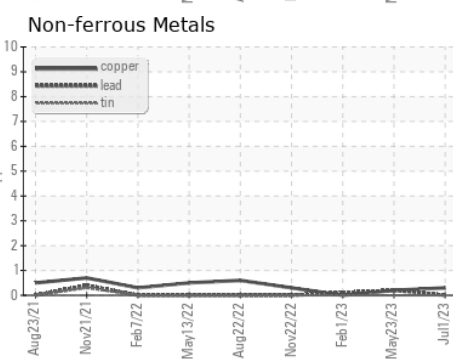
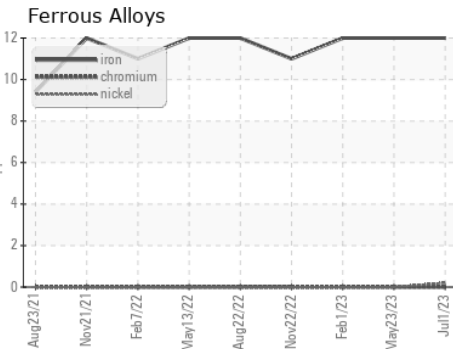


FLUID PROPERTIES	method	limit/base	current	history1	history2	
Visc @ 40°C	cSt	ASTM D445	220	<b>222</b>	222	221

SAMPLE IMAGES	method	limit/base	current	history1	history2
---------------	--------	------------	---------	----------	----------



## GRAPHS



**Laboratory** : WearCheck USA - 501 Madison Ave., Cary, NC 27513  
**Sample No.** : PCA0101472  
**Lab Number** : **05929793**  
**Unique Number** : 10615064  
**Test Package** : PLANT

**SDI - Steel Dynamics Inc. - Heartland**  
 455 West Industrial Drive  
 Terre Haute, IN  
 US 47802  
 Contact: BRAD ELLIS  
 brad.ellis@steeldynamics.com  
 T:  
 F:

To discuss this sample report, contact Customer Service at 1-800-237-1369.  
 \* - Denotes test methods that are outside of the ISO 17025 scope of accreditation.  
 Statements of conformity to specifications are based on the simple acceptance decision rule (JCGM 106:2012)