

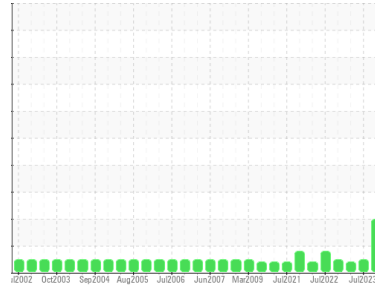
PROBLEM SUMMARY

Sample Rating Trend

ISO

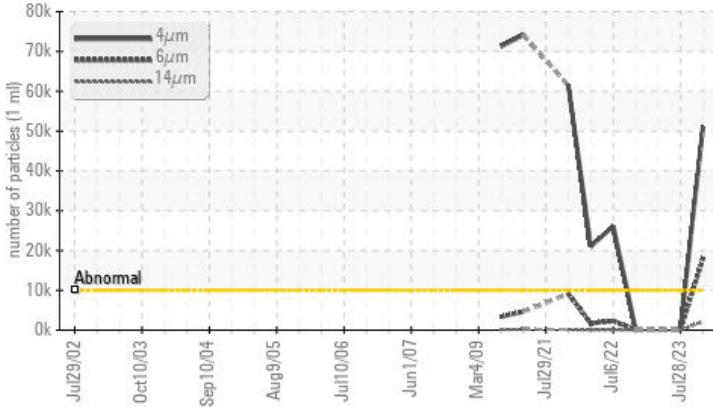


Area
[98462334]
Machine Id
BLENDER 7
Component
Gearbox
Fluid
MOBIL SHC 630 (15 GAL)



COMPONENT CONDITION SUMMARY

▲ Particle Trend



RECOMMENDATION

No corrective action is recommended at this time.
Resample at the next service interval to monitor.

PROBLEMATIC TEST RESULTS

Sample Status			ABNORMAL	NORMAL	ABNORMAL
Particles >4µm	ASTM D7647	>10000	▲ 51091	344	---
Particles >6µm	ASTM D7647	>2500	▲ 18017	35	---
Particles >14µm	ASTM D7647	>640	▲ 2129	4	---
Particles >21µm	ASTM D7647	>160	▲ 596	1	---
Oil Cleanliness	ISO 4406 (c)	>20/18/16	▲ 23/21/18	16/12/9	---

Customer Id: KRANEW
Sample No.: PCA0103589
Lab Number: 05968949
Test Package: IND 2



To manage this report scan the QR code

To discuss the diagnosis or test data:
Angela Borella +1 800-237-1369
angela.borella@wearcheckusa.com

To change component or sample information:
Customer Service +1 1-800-237-1369
customerservice@wearcheck.com

RECOMMENDED ACTIONS

There are no recommended actions for this sample.

HISTORICAL DIAGNOSIS

28 Jul 2023 Diag: Don Baldrige

NORMAL



Resample at the next service interval to monitor. All component wear rates are normal. There is no indication of any contamination in the oil. The amount and size of particulates present in the system are acceptable. The AN level is acceptable for this fluid. The condition of the oil is suitable for further service.

view report



02 Jun 2023 Diag: Don Baldrige

VIS DEBRIS



We recommend you service the filters on this component if applicable. Resample at the next service interval to monitor. We were unable to perform a particle count due to a high concentration of particles present in this sample. All component wear rates are normal. High concentration of visible dirt/debris present in the oil. The AN level is acceptable for this fluid. The condition of the oil is suitable for further service.

view report



29 Jul 2022 Diag: Aaron Black

NORMAL



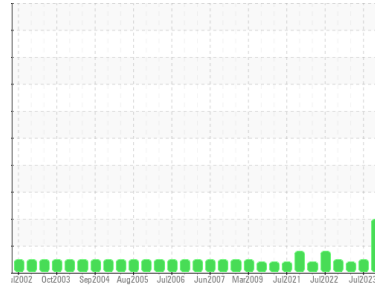
Resample at the next service interval to monitor. All component wear rates are normal. The system cleanliness is acceptable for your target ISO 4406 cleanliness code. The system and fluid cleanliness is acceptable. The AN level is acceptable for this fluid. The condition of the oil is suitable for further service.

view report



OIL ANALYSIS REPORT

Sample Rating Trend



ISO



Area
[98462334]
 Machine Id
BLENDER 7
 Component
Gearbox
 Fluid
MOBIL SHC 630 (15 GAL)

DIAGNOSIS

Recommendation

No corrective action is recommended at this time. Resample at the next service interval to monitor.

Wear

All component wear rates are normal.

Contamination

There is a high amount of particulates present in the oil.

Fluid Condition

The AN level is acceptable for this fluid. The condition of the oil is acceptable for the time in service.

SAMPLE INFORMATION

method	limit/base	current	history1	history2
Sample Number	Client Info	PCA0103589	PCA0094153	PCA0094166
Sample Date	Client Info	29 Sep 2023	28 Jul 2023	02 Jun 2023
Machine Age	hrs	Client Info	0	0
Oil Age	hrs	Client Info	0	0
Oil Changed	Client Info	N/A	N/A	N/A
Sample Status		ABNORMAL	NORMAL	ABNORMAL

WEAR METALS

method	limit/base	current	history1	history2	
Iron	ppm	ASTM D5185m >200	22	16	35
Chromium	ppm	ASTM D5185m >15	1	<1	2
Nickel	ppm	ASTM D5185m >15	0	0	0
Titanium	ppm	ASTM D5185m	0	0	<1
Silver	ppm	ASTM D5185m	0	0	0
Aluminum	ppm	ASTM D5185m >25	2	<1	<1
Lead	ppm	ASTM D5185m >100	<1	0	0
Copper	ppm	ASTM D5185m >200	<1	<1	<1
Tin	ppm	ASTM D5185m >25	0	0	0
Vanadium	ppm	ASTM D5185m	<1	<1	0
Cadmium	ppm	ASTM D5185m	0	0	0

ADDITIVES

method	limit/base	current	history1	history2	
Boron	ppm	ASTM D5185m	0	0	0
Barium	ppm	ASTM D5185m	0	0	0
Molybdenum	ppm	ASTM D5185m	<1	0	<1
Manganese	ppm	ASTM D5185m	1	<1	2
Magnesium	ppm	ASTM D5185m	<1	<1	0
Calcium	ppm	ASTM D5185m	<1	0	3
Phosphorus	ppm	ASTM D5185m	498	490	464
Zinc	ppm	ASTM D5185m	5	0	0
Sulfur	ppm	ASTM D5185m	2157	2081	2231

CONTAMINANTS

method	limit/base	current	history1	history2	
Silicon	ppm	ASTM D5185m >50	26	19	20
Sodium	ppm	ASTM D5185m	3	1	3
Potassium	ppm	ASTM D5185m >20	2	<1	1

FLUID CLEANLINESS

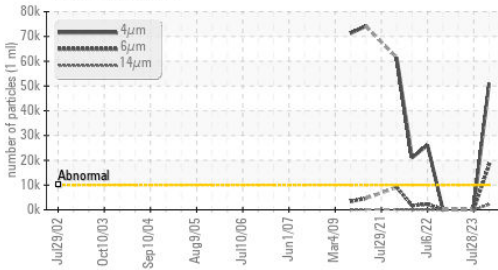
method	limit/base	current	history1	history2
Particles >4µm	ASTM D7647 >10000	▲ 51091	344	---
Particles >6µm	ASTM D7647 >2500	▲ 18017	35	---
Particles >14µm	ASTM D7647 >640	▲ 2129	4	---
Particles >21µm	ASTM D7647 >160	▲ 596	1	---
Particles >38µm	ASTM D7647 >40	13	0	---
Particles >71µm	ASTM D7647 >10	1	0	---
Oil Cleanliness	ISO 4406 (c) >20/18/16	▲ 23/21/18	16/12/9	---

FLUID DEGRADATION

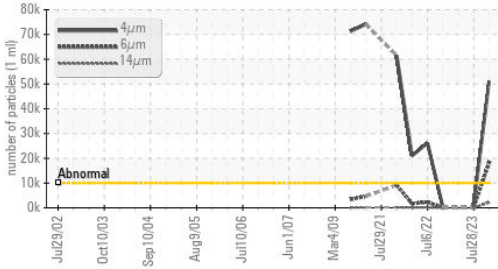
method	limit/base	current	history1	history2	
Acid Number (AN)	mg KOH/g	ASTM D8045	0.48	0.50	0.52

OIL ANALYSIS REPORT

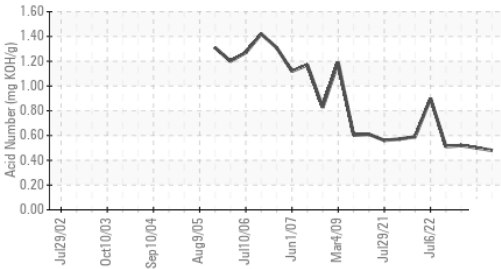
▲ Particle Trend



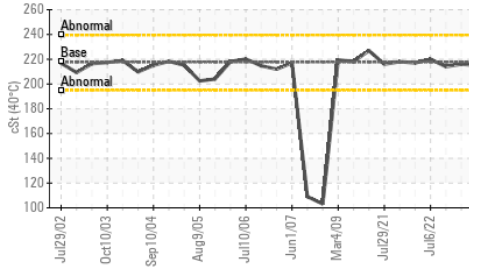
▲ Particle Trend



Acid Number



Viscosity @ 40°C

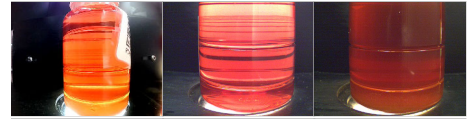


VISUAL	method	limit/base	current	history1	history2
White Metal	scalar	*Visual	NONE	MODER	NONE
Yellow Metal	scalar	*Visual	NONE	NONE	NONE
Precipitate	scalar	*Visual	NONE	NONE	NONE
Silt	scalar	*Visual	NONE	NONE	NONE
Debris	scalar	*Visual	NONE	NONE	NONE
Sand/Dirt	scalar	*Visual	NONE	NONE	NONE
Appearance	scalar	*Visual	NORML	NORML	NORML
Odor	scalar	*Visual	NORML	NORML	NORML
Emulsified Water	scalar	*Visual	>0.2	NEG	NEG
Free Water	scalar	*Visual		NEG	NEG

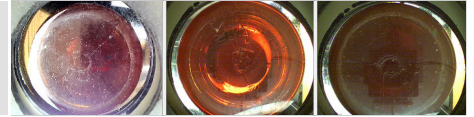
FLUID PROPERTIES	method	limit/base	current	history1	history2
Visc @ 40°C	cSt	ASTM D445	217.7	207	215

SAMPLE IMAGES	method	limit/base	current	history1	history2
---------------	--------	------------	---------	----------	----------

Color

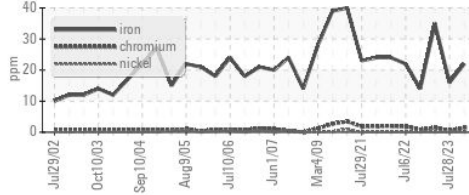


Bottom

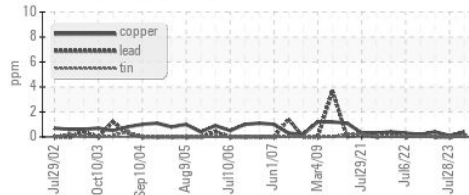


GRAPHS

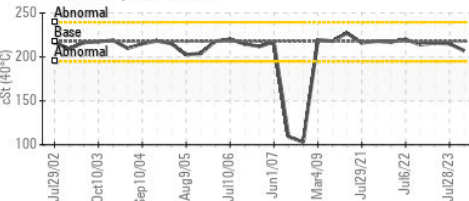
Ferrous Alloys



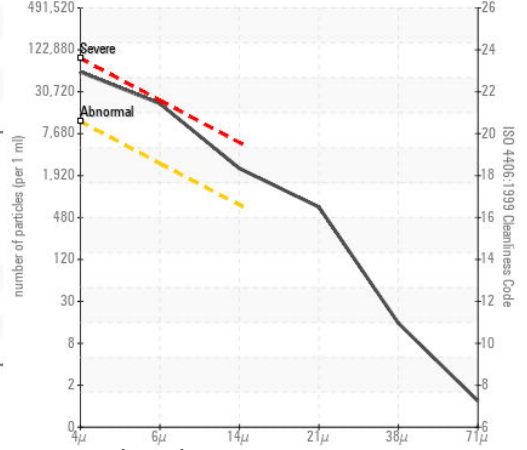
Non-ferrous Metals



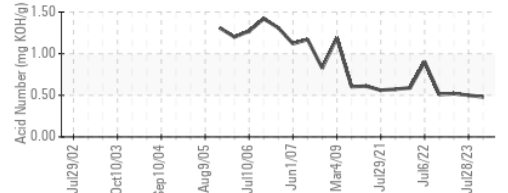
Viscosity @ 40°C



▲ Particle Count



Acid Number



Certificate L2367

Laboratory : WearCheck USA - 501 Madison Ave., Cary, NC 27513
Sample No. : PCA0103589 **Received** : 04 Oct 2023
Lab Number : 05968949 **Diagnosed** : 05 Oct 2023
Unique Number : 10675500 **Diagnostician** : Angela Borella
Test Package : IND 2 (Additional Tests: PrtCount)

KraftHeinz - New Ulm - Plant 8302
 2525 S BRIDGE STREET
 NEW ULM, MN
 US 56073
 Contact: RYAN SCHMID
 ryan.schmid@kraftheinz.com
 T: (507)568-0338
 F: (507)354-7927

To discuss this sample report, contact Customer Service at 1-800-237-1369.

* - Denotes test methods that are outside of the ISO 17025 scope of accreditation.

Statements of conformity to specifications are based on the simple acceptance decision rule (JCGM 106:2012)